

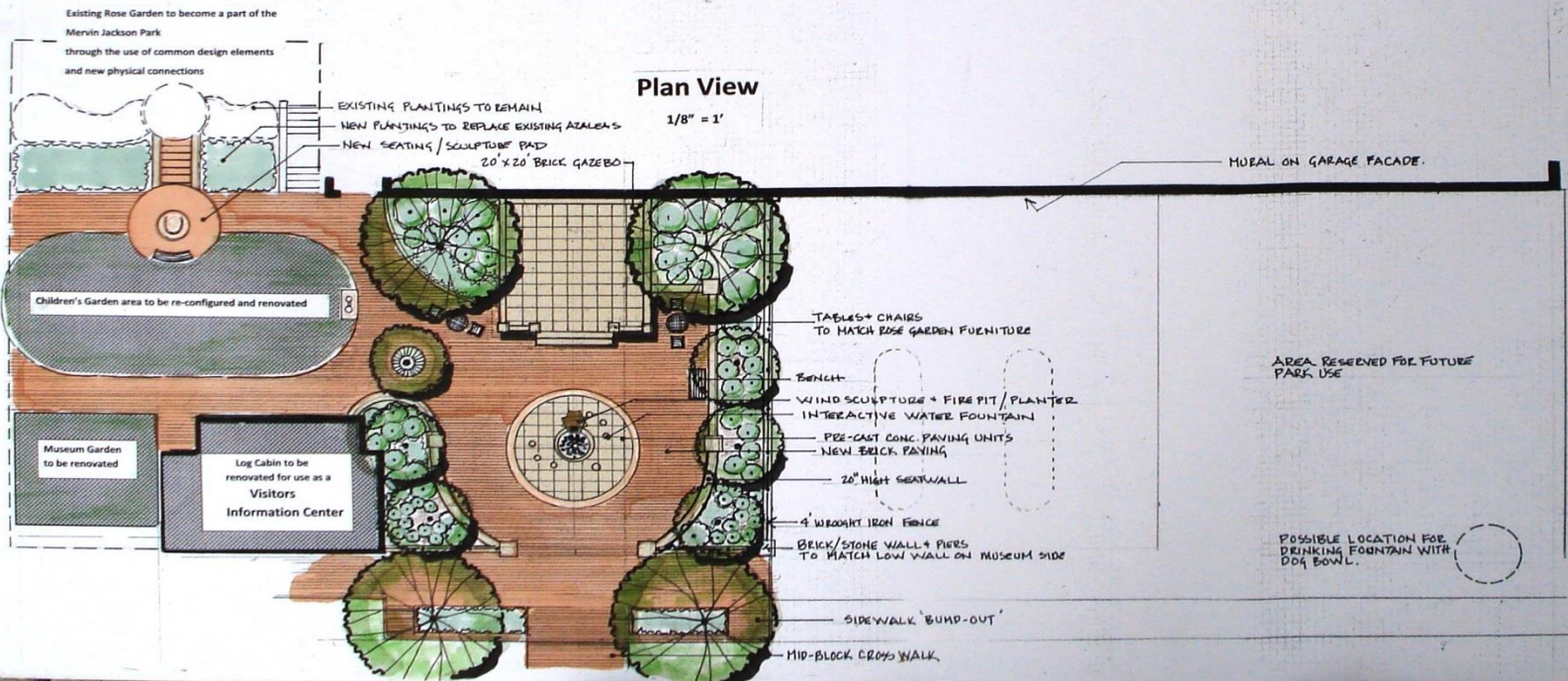
Option #1

This option focuses on only the west parcel, providing visually attractive spaces that offer both passive and interactive activities. The design provides a new, stronger connection to the existing rose garden and museum gardens. Features include:

- Trees and ornamental planting beds
- Seat-walls and decorative paving
- Gazebo, integrated architecturally with the existing buildings
- Interactive play water feature
- Public art and decorative fencing
- Mural
- Drinking fountain
- Hanging baskets
- Outdoor dining tables



Elevation from Loudoun St.
STREET TREES NOT SHOWN



MERVIN JACKSON PARK

(Proposed)
Conceptual Design Options
Community Collaboration