

TITLE: Battlefield Parkway / Route 15 Bypass Interchange (20004)

STATUS: Ongoing

LOCATION: Route 15 Bypass/ Battlefield Parkway Intersection

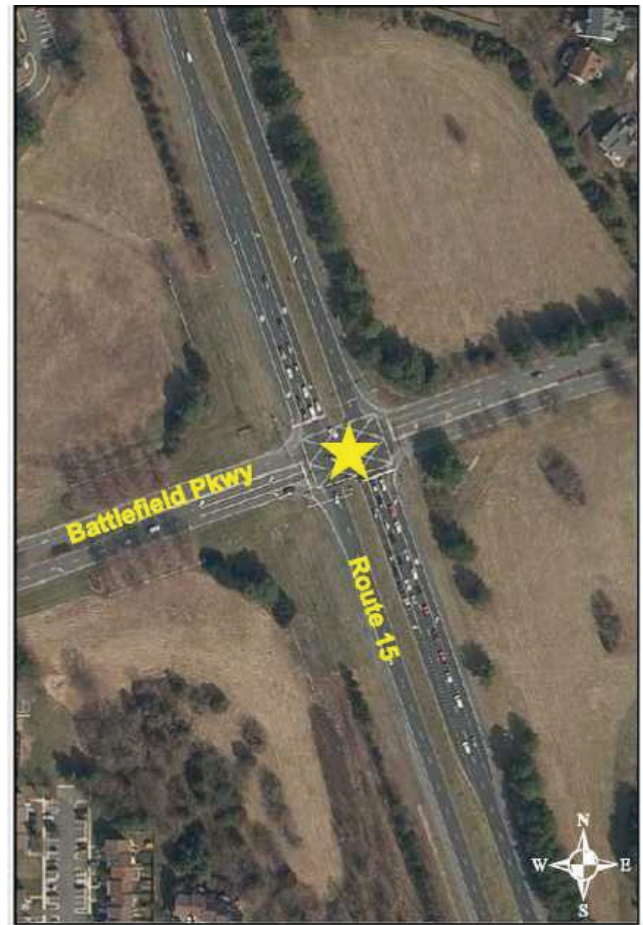
PROGRAM DESCRIPTION: This project consists of development of an Interchange Access Report (IAR) for a new grade separated interchange at the current signalized intersection between Route 15 Leesburg Bypass and Battlefield Parkway. Route 15 is part of the National Highway System that serves as a major commuter route. This intersection is one of three signalized intersections on the bypass; the other two traffic signals will be removed with the future construction of an interchange at Edwards Ferry Road and Fort Evans Road (project 09307). In addition to vehicular traffic issues, the bypass acts as a barrier to discourage pedestrians and bicycles from traveling between the residential and recreational areas east and west of the bypass. The initial step of developing an interchange is to prepare an IAR to evaluate the need for the interchange, compare alternative designs, analyze environmental impacts, and establish a project budget. Remaining available funds will be used into FY2025 to complete some preliminary design work and initial geotech investigations and to develop a cost estimate which can be used in future funding requests. Completion of construction is contingent on the Town receiving funding from sources such as SmartScale, NVTA, and VDOT.

OPERATING IMPACT: TBD

GOAL ADDRESSED: Legacy Leesburg Town Plan (2022): Strategy 4.2.2 - Improve Bicycle and Pedestrian Infrastructure; Strategy 4.3.1 - Implement and Maintain the Transportation Improvement Plan; Strategy 4.3.2 - Manage Traffic Congestion

Significant Dates

PROJECT START	ESTIMATED COMPLETION
Spring 2021	TBD



Funding Sources

Sources	Total Required Project Funding	Approp. Through 6/30/24							Total 6 Yr CIP	Future Funds Required
			2025	2026	2027	2028	2029	2030		
Line of Credit	365,000	135,000	—	—	—	—	—	—	—	230,000
NVTA 30%	10,000	—	10,000	—	—	—	—	—	10,000	—
NVTA 70%	59,000,000	2,000,000	—	—	—	—	—	—	—	57,000,000
Total Sources	\$59,375,000	\$2,135,000	\$10,000	\$—	\$—	\$—	\$—	\$—	\$10,000	\$57,230,000

Planned Uses

Uses	Total Project Cost	Approp. Through 6/30/24							Total 6 Yr CIP	Future Project Cost
			2025	2026	2027	2028	2029	2030		
Project Management	375,000	135,000	10,000	—	—	—	—	—	10,000	230,000
Design/Engineering	2,000,000	2,000,000	—	—	—	—	—	—	—	—
Construction	57,000,000	—	—	—	—	—	—	—	—	57,000,000
Total Uses	\$59,375,000	\$2,135,000	\$10,000	\$—	\$—	\$—	\$—	\$—	\$10,000	\$57,230,000

Operating Impact

Operating/Maintenance	2025	2026	2027	2028	2029	2030
N/A	—	—	—	—	—	—
Total Impact	\$—	\$—	\$—	\$—	\$—	\$—