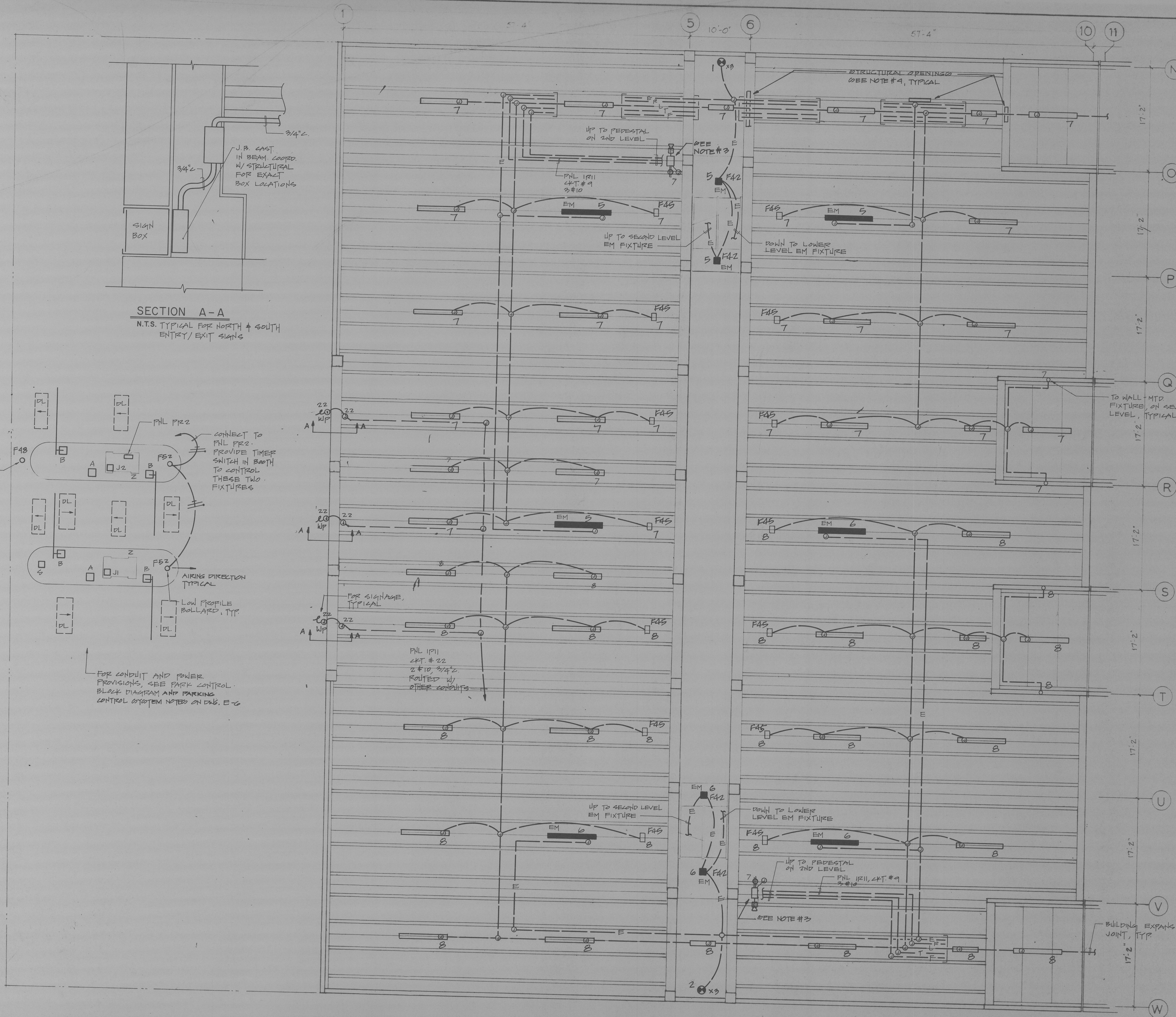




BID DOCUMENT

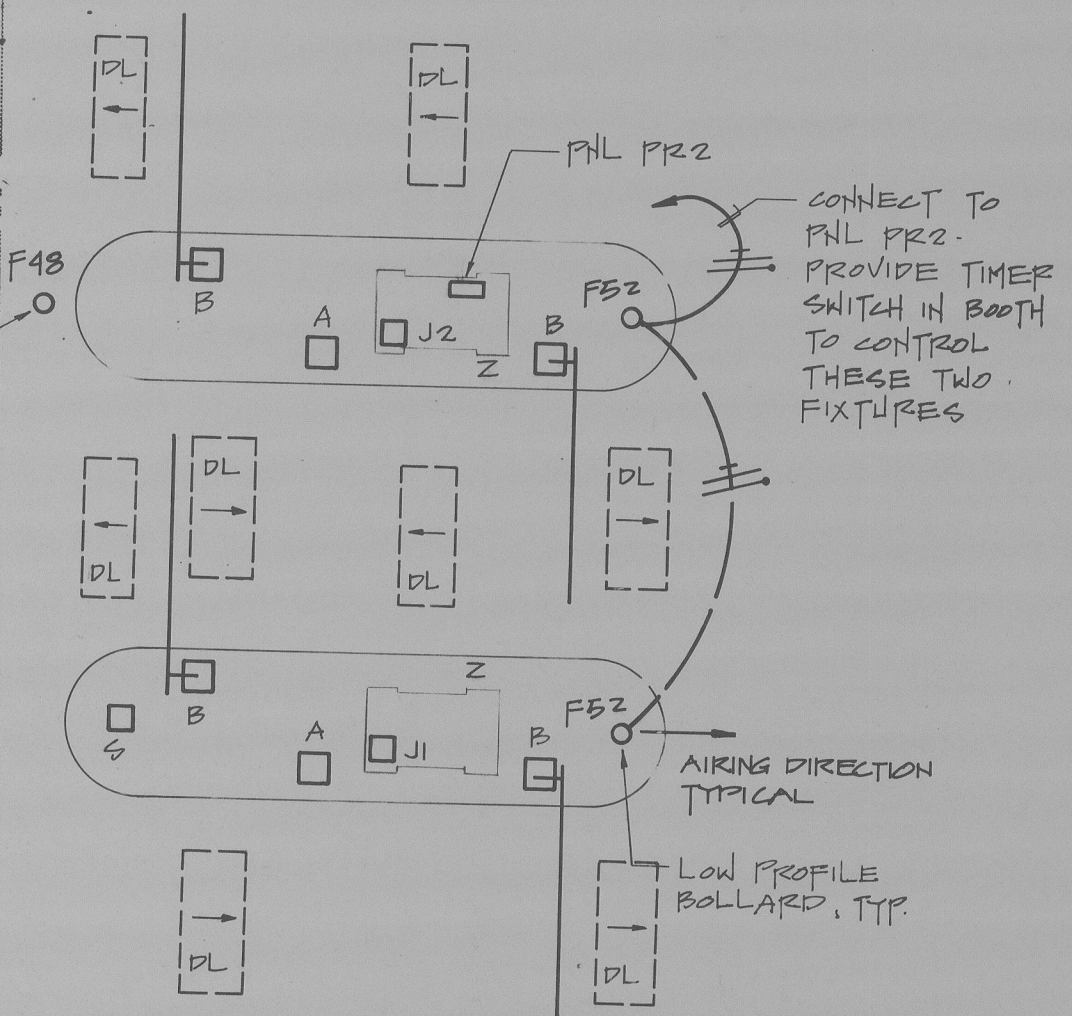
This drawing indicates the general scope of the project in terms of architectural design concept, the dimensions of the building, and its major architectural, structural, mechanical and electrical elements. As a bid document, the drawing does not necessarily indicate or describe all work required for the full performance and completion of the requirements of the Contract Documents.

On the basis of the general scope indicated or described, the Contractor shall furnish all items required for the proper execution and completion of the work. All requirements of the applicable local ordinances and standards shall be adhered to in the execution of the work.



SECTION A-A
N.T.S. TYPICAL FOR NORTH & SOUTH ENTRY/EXIT SIGNS

FLASH LIGHT CONNECTED TO PARKING CONTROL SEE DETAIL ON DRAWING E-6.



FOR CONDUIT AND POWER PROVISIONS, SEE PARK CONTROL BLOCK DIAGRAM AND PARKING CONTROL SYSTEM NOTES ON DWG. E-6.

Issued for Bid	2	01/16/89
Issued for Owner Review	1	10/10/88
Revision	No.	Date

MUNICIPAL GOVERNMENT CENTER
TOWN of LEESBURG in VIRGINIA

PHASE 2
PARKING STRUCTURE

GROUND LEVEL PLAN SOUTH

Drawn	R M R	8703
Checked	A. P.	
		Project No.
		E-5
Scale	1/8" = 1'-0"	Drawing No.
Date	01/16/89	