

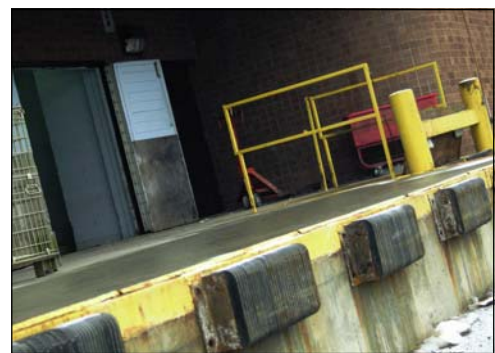
Stormwater Pollution Prevention: Dumpsters and Loading Docks

Many commercial businesses have dumpsters for refuse and/or loading docks somewhere on their site. Both of these locations have the potential for contributing to stormwater pollution if not properly maintained and secured. Identify storm drains around the facility and be sure employees are aware of their locations. Post information and educate employees on stormwater pollution prevention. Below are some good housekeeping tips for preventing pollution:



Dumpsters:

- Dumpsters should be equipped with tight fitting lids
- Keep dumpsters closed or covered to prevent trash and debris from being scattered into the street where it can be washed into storm drains
- Don't dispose of hazardous chemicals in dumpsters—dispose of properly at hazardous waste collection locations
- Don't use a hose to clean out dumpsters—the waste water can run into streets and storm drains
- If your dumpster leaks, contact your disposal company to request a new one
- Post signs prohibiting illegal dumping



Loading Docks:

- Sweep up debris and litter frequently
- Post procedures for cleaning up different types of spills
- Provide cleanup materials in a convenient location for quick access
- Secure chemicals properly to prevent spills and leaks
- Do not hose down loading docks areas—the residual water can carry pollutant, debris and sediments into the storm sewer system
- Make sure loading equipment is properly maintained—leaked or spilled oil and fuel can be washed into storm drains
- Check delivery vehicles for leaks and spills and make sure they are cleaned up immediately
- Do not wash down equipment or vehicles where the residual water can flow into storm drains



For information on the stormwater management program, please contact the Department of Public Works at 703-771-2790 or e-mail publicworks@leesburgva.gov. You may also visit our website at www.leesburgva.gov