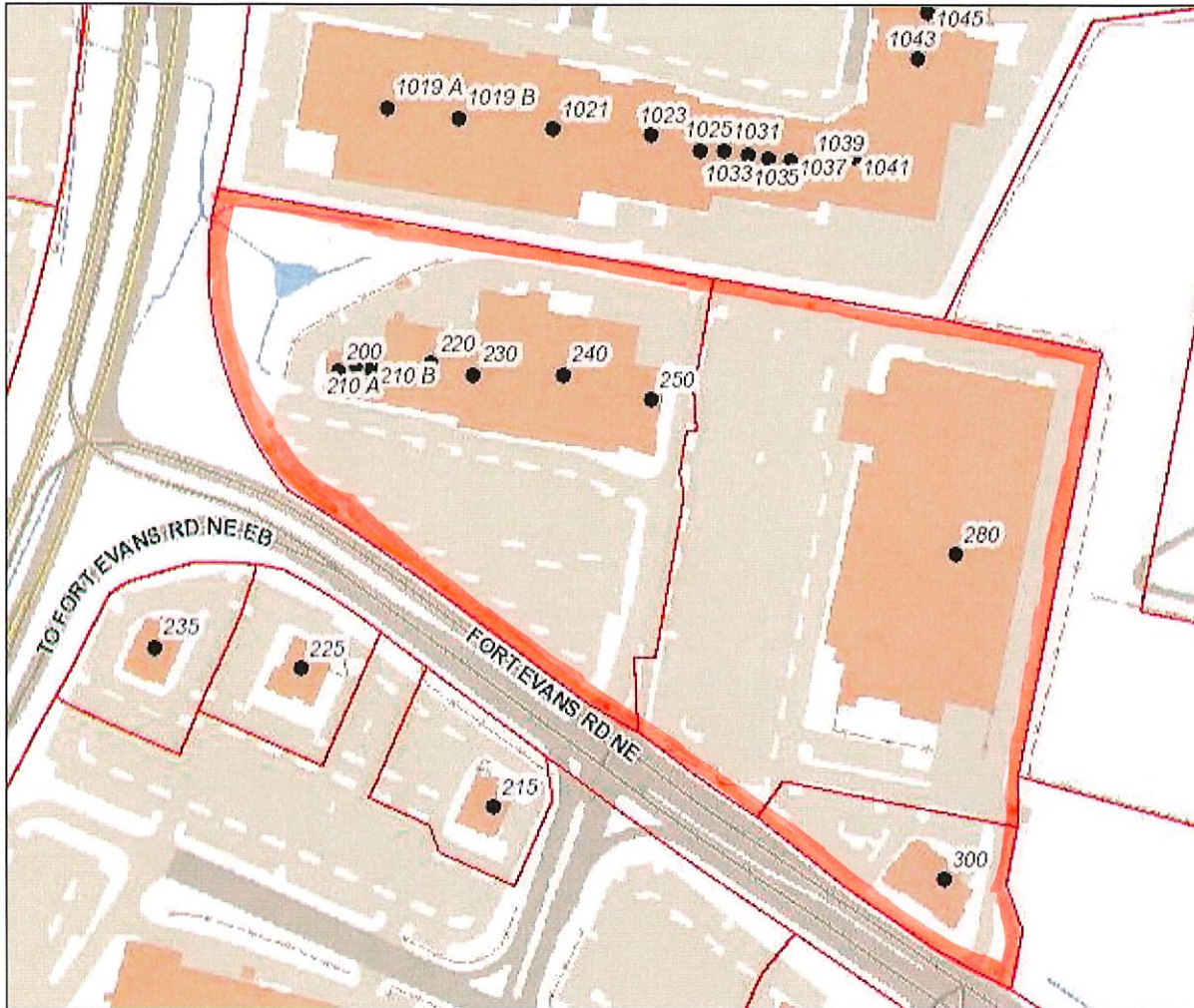




Loudoun County, Virginia
www.loudoun.gov

Wednesday, June 27, 2018

(map not to scale)



FORT EVANS PLAZA
(200-380) FORT EVANS ROA NE.
PIN #:188-20-4317-000,147-15-0298-000,147-15-0954
CSP: BAR-99-82

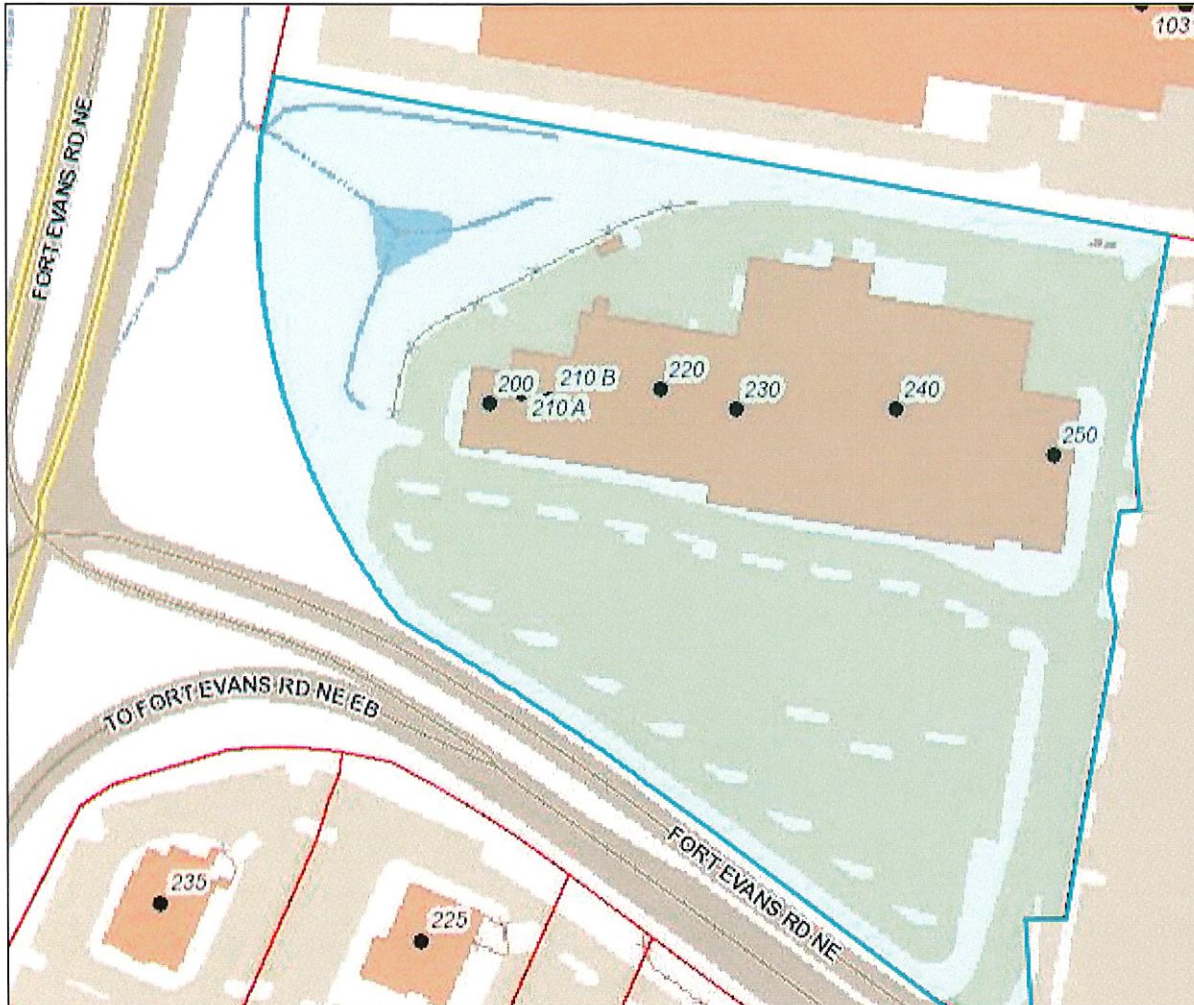
ZONING DISTRICT: B-3



Loudoun County, Virginia
www.loudoun.gov

Wednesday, November 7, 2018

(map not to scale)



FORT EVANS PLAZA
ADDRESS: 200-300 FORT EVANS ROAD NE
PIN #: 188-20-4317-000
CSP: BAR-99-82

ZONING DISTRICT: B-3

Property Search Loudoun.gov

- [Profile](#)
- [Values](#)
- [Sales / Transfers](#)
- [Land](#)
- [Land Use Status](#)
- [Residential](#)
- [Detached Structures](#)
- [Commercial](#)
- [Map](#)
- [WebLogis](#)
- [Aerial Photos](#)
- [Tax History / Payment](#)
- [Parcel Tracking](#)

PARID: **188204317000**
 FORT EVANS PLAZA LMTD PARTNERSHIP, **220 FORT EVANS RD**

1 of 1

Owner		
Name	FORT EVANS PLAZA LMTD PARTNERSHIP	
Care Of	UNIWEST COMMERCIAL REALTY	
Mailing Address	8191 STRAWBERRY LN STE 3	
.	FALLS CHURCH VA 22042-1032	
Instrument Number		
Book	2114	
Page	1422	

- Actions**
- [Neighborhood](#)
 - [Sales](#)
 - [Printable](#)
 - [Summary](#)
 - [Printable Version](#)

Parcel	
Primary Address	220 FORT EVANS RD
Tax Map #	1491261111
State Use Class	Commercial/Indust
Total Land Area (Acreage)	8.41
Total Land Area (SQFT)	
Election District	LEESBURG
Billing District	Leesburg Town
Billing Split Notes 1	
Billing Split Notes 2	
Special Ad Valorem Tax District	None
Special Project District	
Neighborhood	429
Living Units	
Structure Occupancy	RETAIL STORE
Condominium Garage Unit or Parking Space	NO
Subdivision	INTERNATIONAL PAVILION
Affordable Dwelling Unit (Y/N)	N
Ag District	
Ag District Starting Date	
Ag District End Date	
Deactivation Status	

Legal Description	
Legal Description	INT PAVILION DIV OF LAND
.	1626--2401 2114--1422 LEASE AGMT
.	LOT 1

General Information

Loudoun County is providing public record information as a public service in accordance with Virginia Code Title 58.1-3122.2 (1998). The Loudoun County Commissioner of the Revenue provides annual valuations and maintenance of fair market values for equitable assessments on all types of real property.

The property information made available on this site includes ownership and deed information, legal description, sales information, assessment values and house characteristics and can be searched by Parcel ID Number, Address and Tax Map Number. The site is updated weekly. Parcels are linked to the Loudoun County GIS, with map overlays displaying boundary and environmental information such as topography, soils, flood plain and major roads.

Condominium garage units or assigned parking spaces associated with condominiums may have separate parcel identification numbers - and may be assessed separately.

Tax History / Payment

Click on the Parcel ID to view its related document
[188204317000](#)

Location [Google Map](#)
 1 Harrison St, S.E., 5th Floor,

Contact Us
 Phone: (703) 777-0260
 Fax: (703) 771-5234

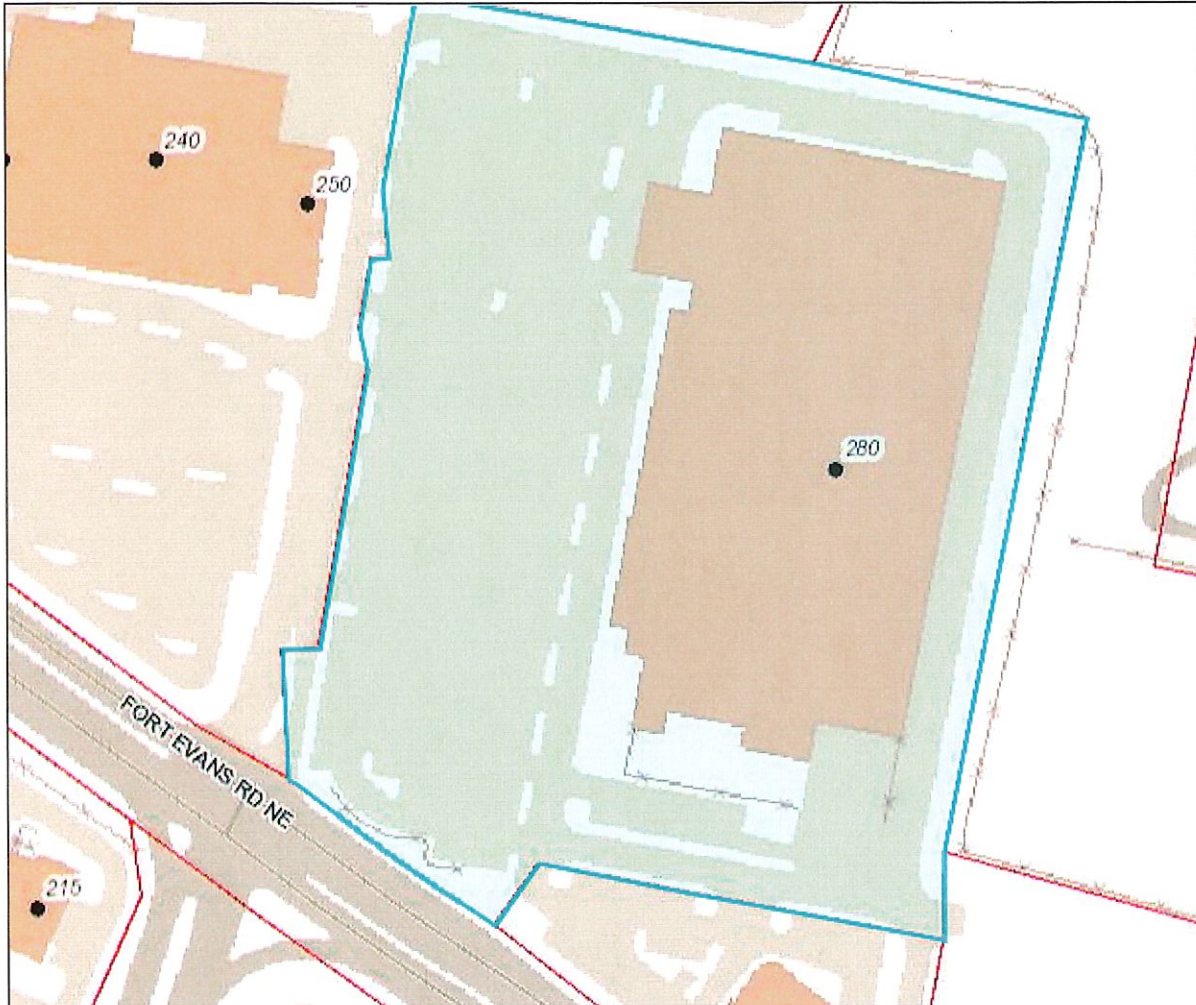
Site Links
[Loudoun.gov](#)



Loudoun County, Virginia
www.loudoun.gov

Friday, May 11, 2018

(map not to scale)



FORT EVANS PLAZA (LOT 2)
ADDRESS: 380 FORT EVANS ROAD NE
PIN #: 147-15-0298-000
CSP: BAR-99-82

ZONING DISTRICT: B-3

Property Search Loudoun.gov

- [Profile](#)
- [Values](#)
- [Sales / Transfers](#)
- [Land](#)
- [Land Use Status](#)
- [Residential](#)
- [Detached Structures](#)
- [Commercial](#)
- [Map](#)
- [WebLogis](#)
- [Aerial Photos](#)
- [Tax History / Payment](#)
- [Parcel Tracking](#)

PARID: 147150298000
 FORT EVANS PLAZA LMTD PARTNERSHIP, 280 FORT EVANS RD

1 of 1

Owner	
Name	FORT EVANS PLAZA LMTD PARTNERSHIP
Care Of	UNIWEST COMMERCIAL REALTY
Mailing Address	8191 STRAWBERRY LN STE 3
	FALLS CHURCH VA 22042-1032
Instrument Number	
Book	1983
Page	2462

Actions

- [Neighborhood](#)
- [Sales](#)
- [Printable](#)
- [Summary](#)
- [Printable Version](#)

Parcel	
Primary Address	280 FORT EVANS RD
Tax Map #	14912611121
State Use Class	Commercial/Indust
Total Land Area (Acreage)	9.52
Total Land Area (SQFT)	
Election District	LEESBURG
Billing District	Leesburg Town
Billing Split Notes 1	
Billing Split Notes 2	
Special Ad Valorem Tax District	None
Special Project District	
Neighborhood	429
Living Units	
Structure Occupancy	RETAIL STORE
Condominium Garage Unit or Parking Space	NO
Subdivision	INTERNATIONAL PAVILION
Affordable Dwelling Unit (Y/N)	N
Ag District	
Ag District Starting Date	
Ag District End Date	
Deactivation Status	

Legal Description	
Legal Description	INT PAVILION DIV OF LAND 1626--2401 1983--2462 Q/C ESMT LOT 2

General Information

Loudoun County is providing public record information as a public service in accordance with Virginia Code Title 58.1-3122.2 (1998). The Loudoun County Commissioner of the Revenue provides annual valuations and maintenance of fair market values for equitable assessments on all types of real property.

The property information made available on this site includes ownership and deed information, legal description, sales information, assessment values and house characteristics and can be searched by Parcel ID Number, Address and Tax Map Number. The site is updated weekly. Parcels are linked to the Loudoun County GIS, with map overlays displaying boundary and environmental information such as topography, soils, flood plain and major roads.

Condominium garage units or assigned parking spaces associated with condominiums may have separate parcel identification numbers - and may be assessed separately.

Tax History / Payment	
Click on the Parcel ID to view its related document	
147150298000	

Location Google Map
 1 Harrison St, S.E., 5th Floor,

Contact Us
 Phone: (703) 777-0260
 Fax: (703) 771-5234

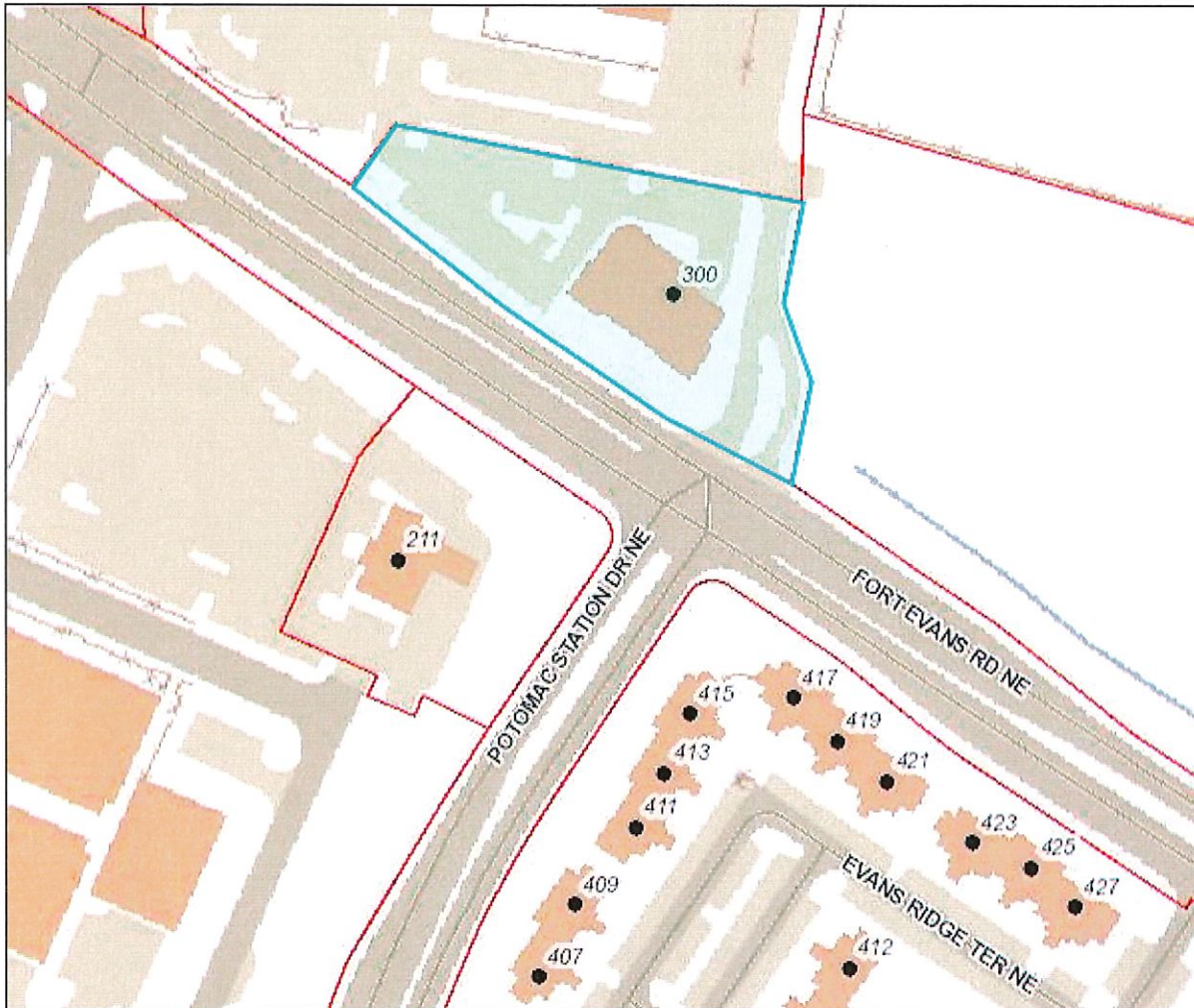
Site Links
[Loudoun.gov](#)



Loudoun County, Virginia
www.loudoun.gov

Friday, May 11, 2018

(map not to scale)



FORT EVANS PLAZA (LOT 3)
ADDRESS: 300 FORT EVANS ROAD NE
PIN #: 147-15-0954-000
CSP: BAR-99-82

ZONING DISTRICT: B-3

Property Search Loudoun.gov

- Profile
- Values
- Sales / Transfers
- Land
- Land Use Status
- Residential
- Detached Structures
- Commercial
- Map
- WebLogis
- Aerial Photos
- Tax History / Payment
- Parcel Tracking

PARID: 147150954000
 FORT EVANS PLAZA LMTD PARTNERSHIP, 300 FORT EVANS RD

1 of 1

Actions

- Neighborhood
- Sales
- Printable
- Summary
- Printable Version

Owner	
Name	FORT EVANS PLAZA LMTD PARTNERSHIP
Care Of	UNIWEST COMMERCIAL REALTY
Mailing Address	8191 STRAWBERRY LN STE 3
	FALLS CHURCH VA 22042-1032
Instrument Number	
Book	1626
Page	2401

Parcel

Primary Address	300 FORT EVANS RD
Tax Map #	149126111131
State Use Class	Commercial/Indust
Total Land Area (Acreage)	1.41
Total Land Area (SQFT)	
Election District	LEESBURG
Billing District	Leesburg Town
Billing Split Notes 1	
Billing Split Notes 2	
Special Ad Valorem Tax District	None
Special Project District	
Neighborhood	429
Living Units	
Structure Occupancy	MULTIPLE OCCUPANIES
Condominium Garage Unit or Parking Space	NO
Subdivision	INTERNATIONAL PAVILION
Affordable Dwelling Unit (Y/N)	N
Ag District	
Ag District Starting Date	
Ag District End Date	
Deactivation Status	

Legal Description

Legal Description	INT PAVILION DIV OF LAND 1626--2401 1677--1767 ST DED LOT 3A
-------------------	--

General Information

Loudoun County is providing public record information as a public service in accordance with Virginia Code Title 58.1-3122.2 (1998). The Loudoun County Commissioner of the Revenue provides annual valuations and maintenance of fair market values for equitable assessments on all types of real property.

The property information made available on this site includes ownership and deed information, legal description, sales information, assessment values and house characteristics and can be searched by Parcel ID Number, Address and Tax Map Number. The site is updated weekly. Parcels are linked to the Loudoun County GIS, with map overlays displaying boundary and environmental information such as topography, soils, flood plain and major roads.

Condominium garage units or assigned parking spaces associated with condominiums may have separate parcel identification numbers - and may be assessed separately.

Tax History / Payment

Click on the Parcel ID to view its related document
[147150954000](#)

Location Google Map
 1 Harrison St, S.E., 5th Floor,

Contact Us
 Phone: (703) 777-0260
 Fax: (703) 771-5234

Site Links
 Loudoun.gov