

The Town of
**Leesburg,
Virginia**

25 West Market Street ■ P.O. Box 88 ■ 20178 ■ 703-777-2420 ■ Metro: 703-478-1821 ■ FAX: 703-771-2727 ■ www.leesburgva.gov

18 July 2007

Mr. Dave Payne
Signs by Dave
40 Catoctin Circle SE
Leesburg, VA 20175

Re: BAR Case TLHP-2007-0035; Conditional Approval, South King Street Center Comprehensive Sign Plan, H-2 Corridor Design Guidelines.

Dear Mr. Payne,

This letter serves as your official notification of the action taken by the Leesburg Board of Architectural Review (BAR) at the 16 July 2007 meeting on BAR Case TLHP-2007-0035 for a Comprehensive Sign Plan for South King Street Center .

The BAR approved TLHP-2007-0035 with the following conditions and clarifications:

1. The background on internally illuminated wall signs must be opaque.
2. Sign installation must be in substantial conformance with plans date stamped 07/16/2007 and submitted by Signs by Dave.

Enclosed is a copy of the approved elevations. Should your project plans change, you will need to submit another application to the BAR for review of modifications to this project. Each individual sign and the monument sign approved as part of this comprehensive sign package must receive individual sign permits prior to installation. If you need further clarification or any additional assistance, please feel free to contact me at 703.771.2773 or amcdonald@leesburgva.gov.

Sincerely,

Wade Burkholder for

Annie McDonald
Preservation Planner

enclosure: approved elevations

SOUTH KING STREET CENTER COMPREHENSIVE SIGN PLAN

TOWN OF LEESBURG, VIRGINIA BOARD OF ARCHITECTURAL REVIEW
CASE # TLHP - 2007-0035

ADMINISTRATIVE APPROVAL
 H-1 OVERLAY DISTRICT
 H-2 CORRIDOR OVERLAY DISTRICT / PROFFER

Notes: _____

STAFF, BOARD OF ARCHITECTURAL REVIEW

07/16/2007
APPROVAL DATE

THESE DRAWINGS MAY NOT BE CHANGED WITHOUT PRIOR APPROVAL FROM STAFF OR THE BOARD OF ARCHITECTURAL REVIEW

ORIGINAL

DO NOT REMOVE
FROM FILE.



TOWN OF LEESBURG, VIRGINIA BOARD OF ARCHITECTURAL REVIEW
 CASE # TLIP - 2007-0035

ADMINISTRATIVE APPROVAL

I1-1 OVERLAY DISTRICT

I1-2 CORRIDOR OVERLAY DISTRICT / PROFFER

Notes: _____

[Signature]
 STAFF, BOARD OF ARCHITECTURAL REVIEW

APPROVAL DATE 07/16/2007 2007

THESE DRAWINGS MAY NOT BE CHANGED WITHOUT PRIOR APPROVAL FROM STAFF OR THE BOARD OF ARCHITECTURAL REVIEW.

SOUTH KING ST. CENTER



COLOR PLAN

2040 RAIN FOREST



250 YELLOW GOLD



001 WHITE

23 K GOLD LEAF



LEESBURG, VIRGINIA BOARD OF ARCHITECTURAL REVIEW
CASE # TLIP - 2007-0035

ADMINISTRATIVE APPROVAL
 H-1 OVERLAY DISTRICT
 H-2 CORRIDOR OVERLAY DISTRICT / PROFFER

Notes: _____

[Signature]
SEVP, BOARD OF ARCHITECTURAL REVIEW

07/16/2007
APPROVAL DATE

THESE DRAWINGS MAY NOT BE CHANGED WITHOUT PRIOR APPROVAL FROM STAFF OR THE BOARD OF ARCHITECTURAL REVIEW.

Signs A-E

Material: 1 3/4" western red cedar, sandblasted dimensional w/ raised copy and edge border

Mounting: flat wall mount to exterior walls

Lighting: projecting lighting overhead

Colors: white copy with yellow gold borders on a green background

Signs F, G, H

Material: 7" wide heavy gauge extruded aluminum, with retainers for 3/16" acrylic faces

Mounting: flat wall mount to exterior

Lighting: internal lighting with T12HO fluorescent lamps

Color: white copy on dark green background

Signs I or J

Material: (main structure & base) are constructed of polystyrene & polyurethane hard coat. Solid with pvc sleeves embedded for post mounting

(attached main panels) are wood carved red cedar panels with center's name

(attached tenant panels) are flat aluminum with vinyl lettering

Mounting: free standing with 2 post in concrete footing

Lighting: external floods

Colors: gold and white lettering on a parchment background with brick color base

A.

48"



5"
12"
7.5"

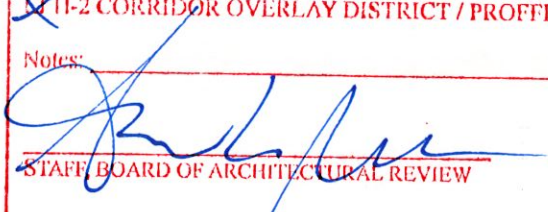
120"

48" X 120" - 1/24 SCALE

1 SIGN, BUILDING 1, SOUTH SIDE

TOWN OF LEESBURG, VIRGINIA BOARD OF ARCHITECTURAL REVIEW
CASE # TLHP - 2007-0035

ADMINISTRATIVE APPROVAL
 II-1 OVERLAY DISTRICT
 II-2 CORRIDOR OVERLAY DISTRICT / PROFFER

Notes:


STAFF BOARD OF ARCHITECTURAL REVIEW 07/35/2007
APPROVAL DATE

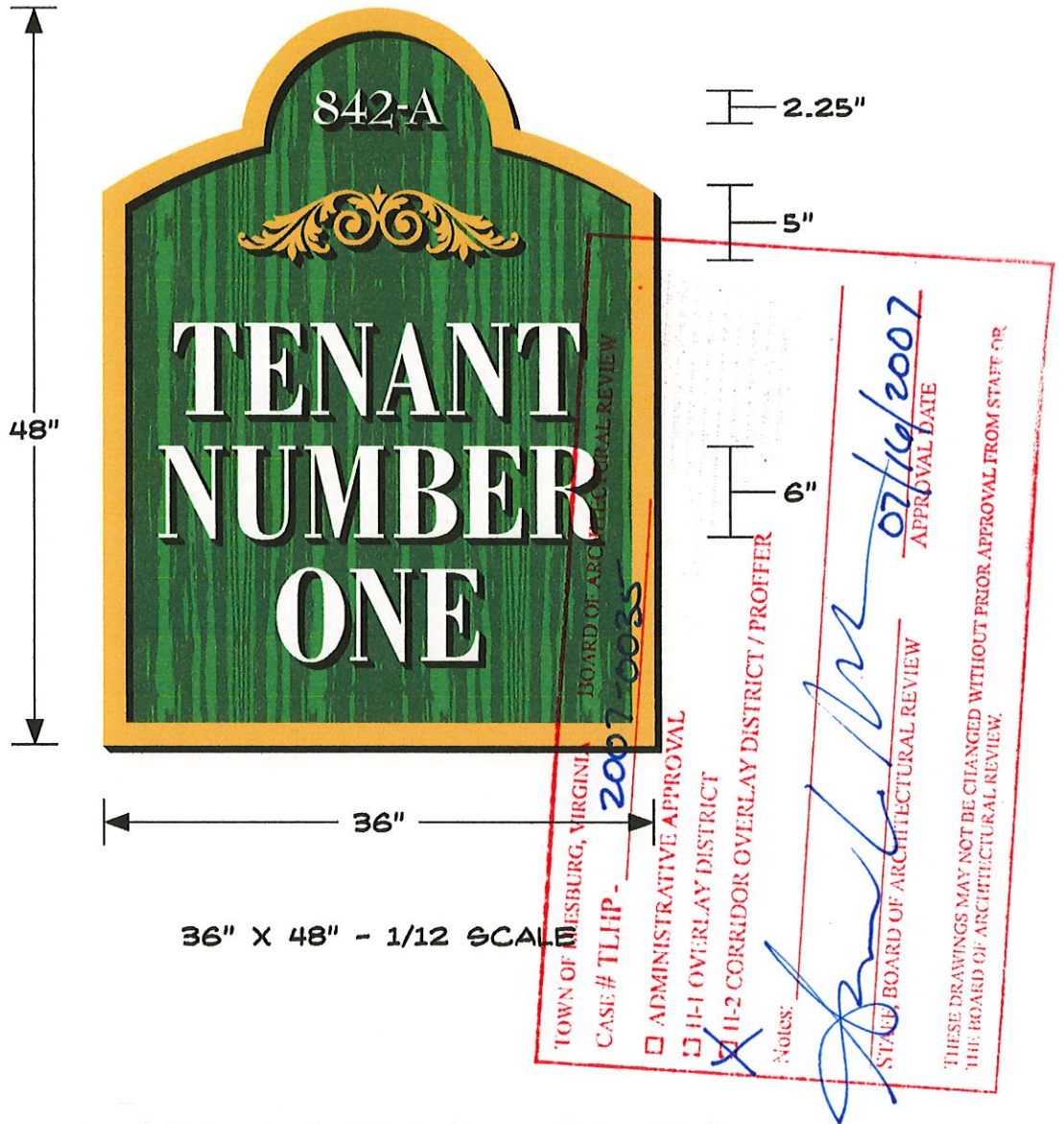
THESE DRAWINGS MAY NOT BE CHANGED WITHOUT PRIOR APPROVAL FROM STAFF OR THE BOARD OF ARCHITECTURAL REVIEW.

COMPREHENSIVE SIGN PLAN SOUTH KING STREET CENTER

Copyright © 2006 Signs by Dave. All works of authorship on this medium are original, and all rights thereto are reserved. Conveyance of this medium to a third party does not constitute a license to reproduce, use, or copy this work of authorship in any manner.



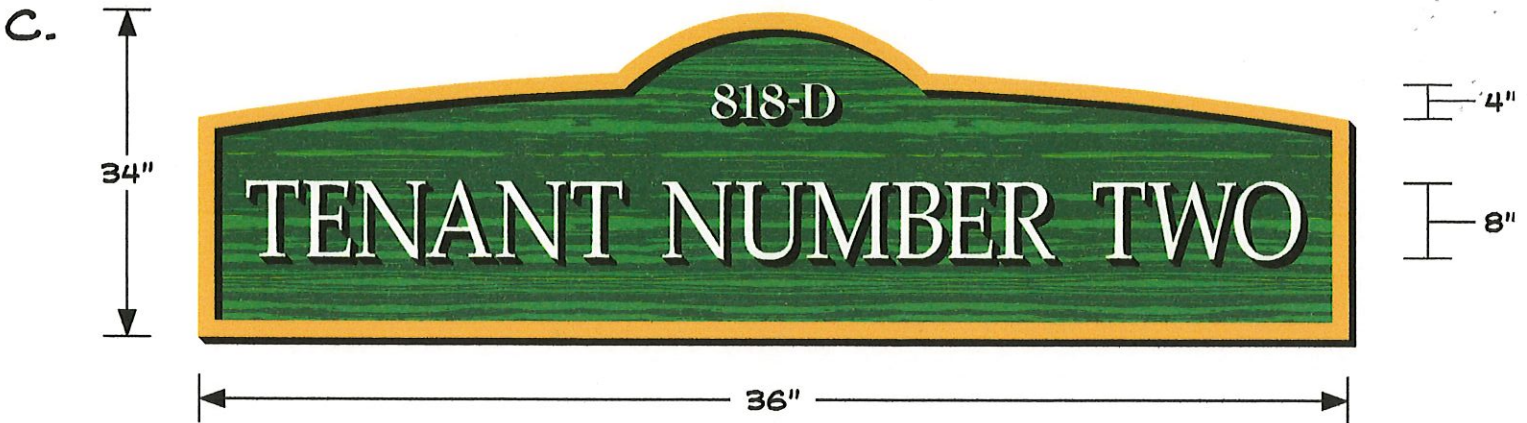
B.



3 OF THESE FOR BUILDING 1, WEST SIDE
1 OF THESE FOR BUILDING 1, NORTH SIDE

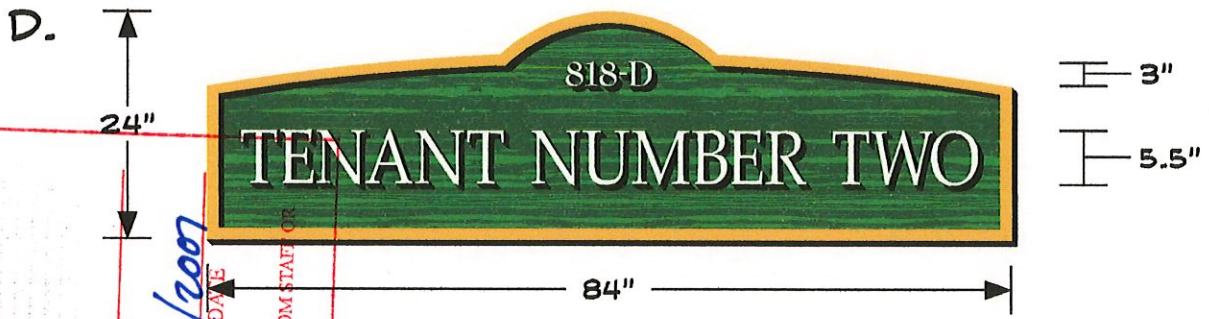
COMPREHENSIVE SIGN PLAN SOUTH KING STREET CENTER

Copyright © 2006 Signs by Dave. All works of authorship on this medium are original, and all rights thereto are reserved. Conveyance of this medium to a third party does not constitute a license to reproduce, use, or copy this work of authorship in any manner.



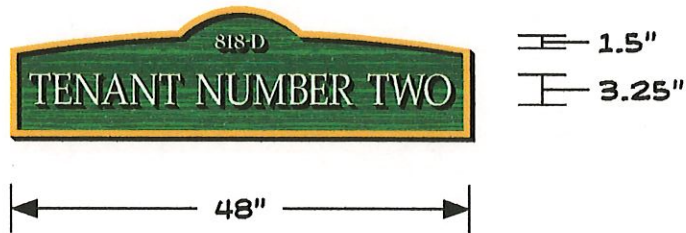
34" X 120" - 1/20 SCALE

1 FOR BUILDING 1 WEST SIDE, 2 FOR BUILDING 2 NORTH SIDE, 1 FOR BUILDING 2 EAST SIDE



24" X 84" - 1/20 SCALE

2 FOR BUILDING 2 NORTH SIDE, 1 FOR BUILDING 2 EAST SIDE



14" X 48" - 1/20 SCALE

1 FOR BUILDING 2, NORTH SIDE

TOWN OF LEESBURG, VIRGINIA BOARD OF ARCHITECTURAL REVIEW
 CASE # TLHP - 2007-0035
 ADMINISTRATIVE APPROVAL
 H-1 OVERLAY DISTRICT
 H-2 CORRIDOR OVERLAY DISTRICT / PROFFER

Notes:
 APPROVAL DATE: 07/16/2007
 STAFF: BOARD OF ARCHITECTURAL REVIEW

THESE DRAWINGS MAY NOT BE CHANGED WITHOUT PRIOR APPROVAL FROM STAFF OR THE BOARD OF ARCHITECTURAL REVIEW.

COMPREHENSIVE SIGN PLAN SOUTH KING STREET CENTER

Copyright © 2006 Signs by Dave. All works of authorship on this medium are original, and all rights thereto are reserved. Conveyance of this medium to a third party does not constitute a license to reproduce, use, or copy this work of authorship in any manner.

RLM Light

TOWN OF LEBURG, VIRGINIA BOARD OF ARCHITECTURAL REVIEW
 CASE # TLHIP - 2007-0035
 ADMINISTRATIVE APPROVAL
 U-1 OVERLAY DISTRICT
 U-2 CORRIDOR OVERLAY DISTRICT / PROFFER

Notes:
 [Signature]
 APPROVAL DATE: 07/16/2007

THESE DRAWINGS MAY NOT BE CHANGED WITHOUT PRIOR APPROVAL FROM STAFF OR THE BOARD OF ARCHITECTURAL REVIEW.



Above image shows you how adjustable the shade is

Comes as shown in image with Swivel Shade, Arm & Wall Canopy. All you need to add is a bulb.

Shown Above in White Finish in fixed position

Click a color to see this fixture in that color



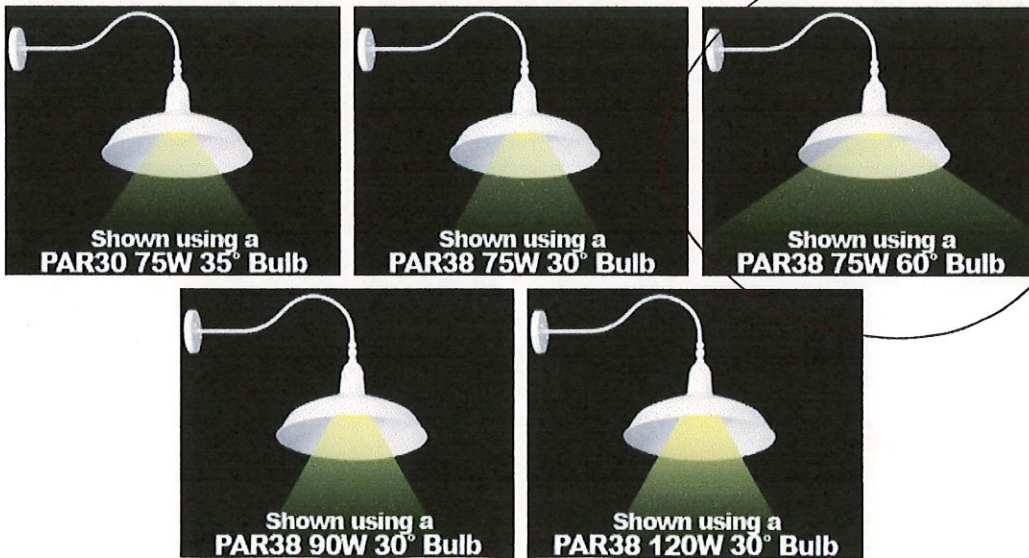
We designed the shade with a 'rollback' edge, for strength, integrity and designer look.

This is a Close-Up of our Exclusive Swivel. Notice that it uses a bolt design to lock in place.

**Our Prices are so low
 Because we make it
 & sell it Direct To You!**

It's Finally Here! The FIRST & ONLY fixture of this type that has an adjustable shade!

We have added our Exclusive Swivel Shade to this Classically designed RLM Flat-Cut "Gooseneck" outdoor wall fixture. This timeless design has been around for over 50 years, but we are the First and ONLY company to add this exclusive swivel feature. With this Exclusive Swivel Shade design, you can now adjust the shade to meet your needs as opposed to the traditional style where the shade is fixed. With the fixed style, you would have no choice but to accept the light's fixed direction. Now, with our Exclusive Swivel Shade design, this fixture will adjust to your needs instead of you having to adjust to the fixture's needs. Great for general lighting, task lighting, security lighting, sign lighting, the uses are endless! ...Especially with the adjustable shade feature! **CCL - Always Ahead...Always**



↓ more ↓

LIGHTED SIGNS

J.



16" X 120" - 1/24 SCALE
1 FOR BUILDING 1, NORTH SIDE

G.



24" X 96" - 1/24 SCALE
1 FOR BUILDING 3, EAST SIDE

H.



16" X 120" - 1/24 SCALE
1 FOR BUILDING 3, NORTH SIDE

TOWN OF LEESBURG, VIRGINIA BOARD OF ARCHITECTURAL REVIEW

CASE # TLHP - 2007-0035

ADMINISTRATIVE APPROVAL

H-1 OVERLAY DISTRICT

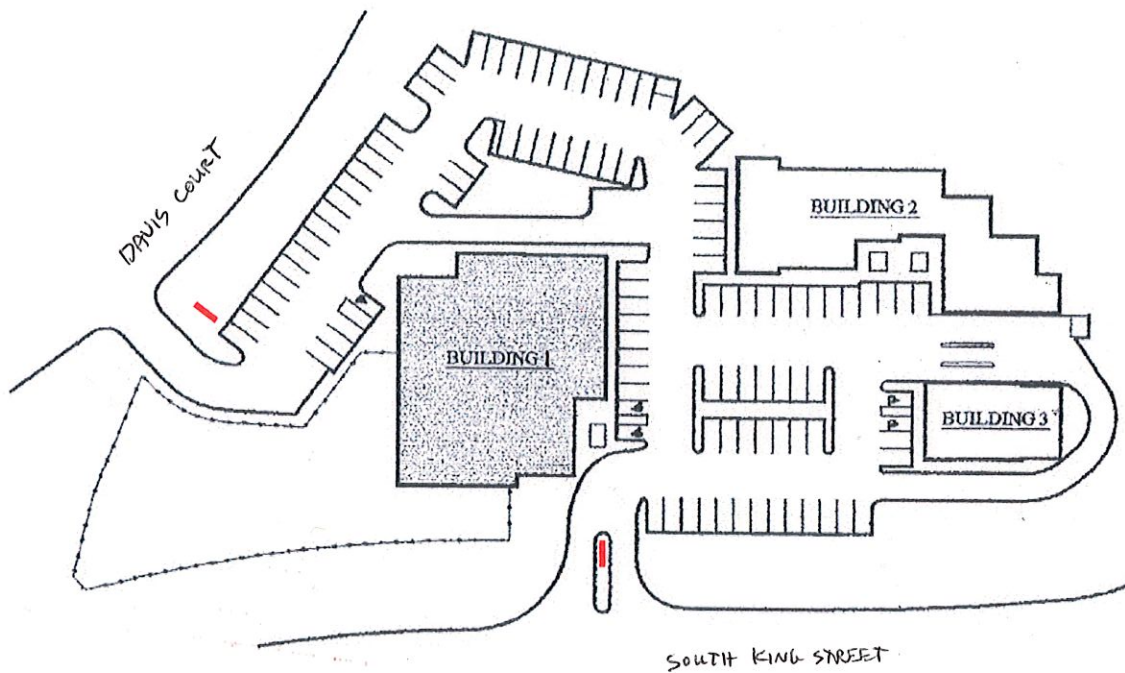
H-2 CORRIDOR OVERLAY DISTRICT / PROFFER

Notes: **BOX SIGNS MUST HAVE OPAQUE BACKGROUND**

APPROVAL DATE: 07/14/2007

STAFF, BOARD OF ARCHITECTURAL REVIEW

THESE DRAWINGS MAY NOT BE CHANGED WITHOUT PRIOR APPROVAL FROM STAFF OR THE BOARD OF ARCHITECTURAL REVIEW.



| = MONUMENT SIGN LOCATIONS

TOWN OF LEESBURG, VIRGINIA BOARD OF ARCHITECTURAL REVIEW
 CASE # TLHP - 2007-0035

ADMINISTRATIVE APPROVAL
 H-1 OVERLAY DISTRICT
 H-2 CORRIDOR OVERLAY DISTRICT / PROFFER

Notes: _____

[Signature] 02/16/2007
 STAFF BOARD OF ARCHITECTURAL REVIEW APPROVAL DATE

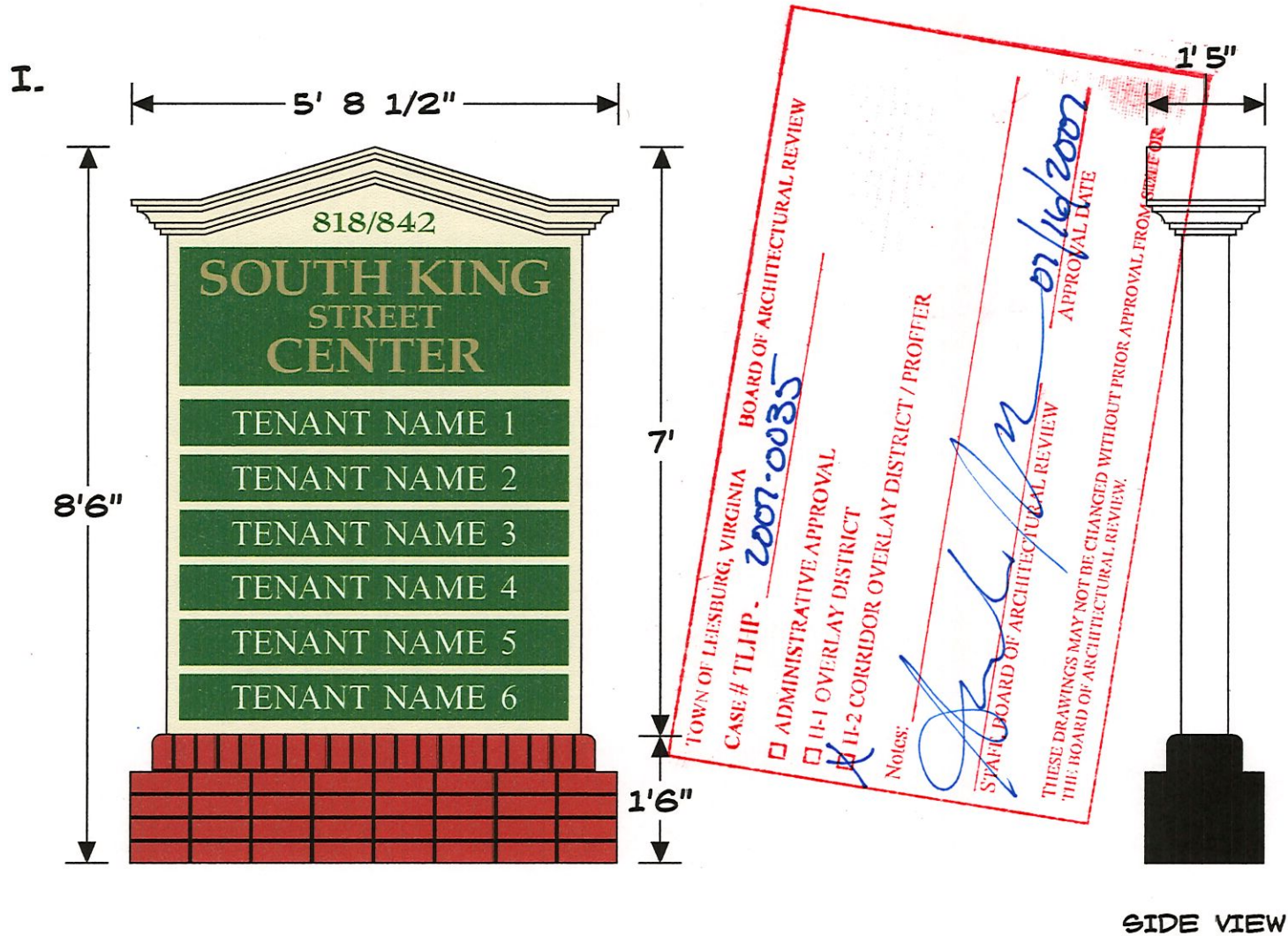
THESE DRAWINGS MAY NOT BE CHANGED WITHOUT PRIOR APPROVAL FROM STAFF OR THE BOARD OF ARCHITECTURAL REVIEW.

Copyright © 2007 Signs by Dave. All works of authorship on this medium are original, and all rights thereto are reserved. Conveyance of this medium to a third party does not constitute a license to reproduce, use, or copy this work of authorship in any manner.



REVISED MONUMENT SIGNS

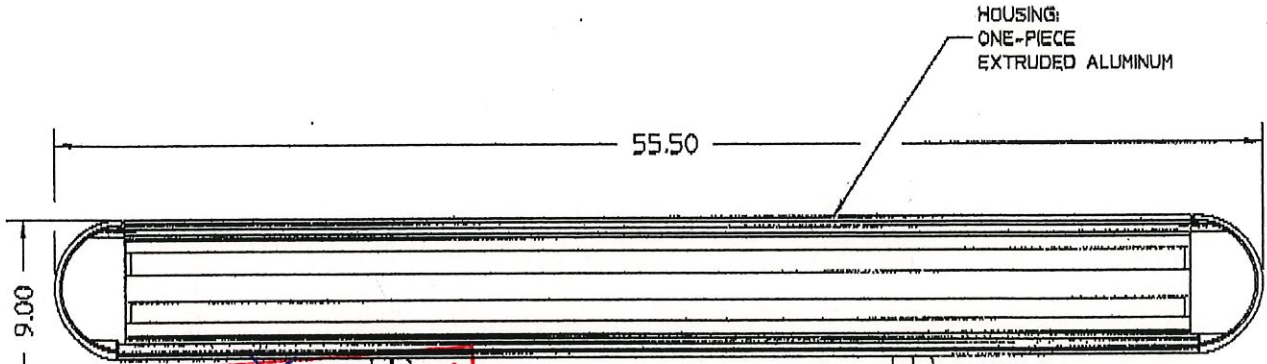
- 1 SIGN NORTH, OFF KING STREET
- 1 SIGN EAST, OFF DAVIS COURT



Copyright © 2006 Signs by Dave. All works of authorship on this medium are original, and all rights thereto are reserved. Conveyance of this medium to a third party does not constitute a license to reproduce, use, or copy this work of authorship in any manner.

Ordering Guide
N3186: FLOODLYTE

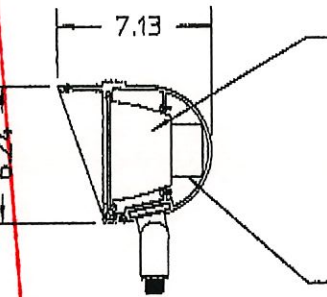
Color:
Bronze



24.00

MOUNTING: (2)
DIE-CAST ALUMINUM
LOCKING TEETH,
1/2-14" NPSM
STAINLESS STEEL
NIPPLE

Right Side View



REFLECTOR:
REFLECTIVE HAMMERSTONE
ALUMINUM, SEMI-SPECULAR
KICK PLATES

SOCKET:
MOUNTED DIRECTLY ONTO
THE REFLECTOR ASSEMBLY
(lamps not included)

BALLAST: 0°C START
FACTORY PREWIRED
AND TESTED ELECTRONIC
64W FL, 120V

Notes:
 ADMINISTRATIVE APPROVAL
 H-1 OVERLAY DISTRICT
 H-2 CORRIDOR OVERLAY DISTRICT / PROFFER

STAFF, BOARD OF ARCHITECTURAL REVIEW
 APPROVAL DATE: 07/16/2007

THESE DRAWINGS MAY NOT BE CHANGED WITHOUT PRIOR APPROVAL FROM STAFF OR THE BOARD OF ARCHITECTURAL REVIEW.

CASE # THHP - 2007-0035
 TOWN OF LEBURG, VIRGINIA
 BOARD OF ARCHITECTURAL REVIEW

Full Specification Fixture Drawing

NOTICE:
THIS DRAWING IS FOR REFERENCE ONLY. CHECK FOR LATEST REVISION PRIOR TO ORDERING

HADCO
a Genlyte company
ISO 9000: 2000 Certified
"Over 50 Years of Excellence"

100 Craftway P.O. Box 128
Littletown, Pennsylvania 17340-0128
Phone 717-359-7131
Fax 717-359-9515
www.hadco.com

JOB NAME:

REP. TERRITORY:

147

REVISED NORTH ELEVATION



SIGN: 16" X 120"

SIGN: 24" X 32"

NORTH ELEVATION BUILDING # ILHP - 2007-0035

TOWN OF LEESBURG, VIRGINIA BOARD OF ARCHITECTURAL REVIEW

ADMINISTRATIVE APPROVAL

H-1 OVERLAY DISTRICT

H-2 CORRIDOR OVERLAY DISTRICT / PROFFER

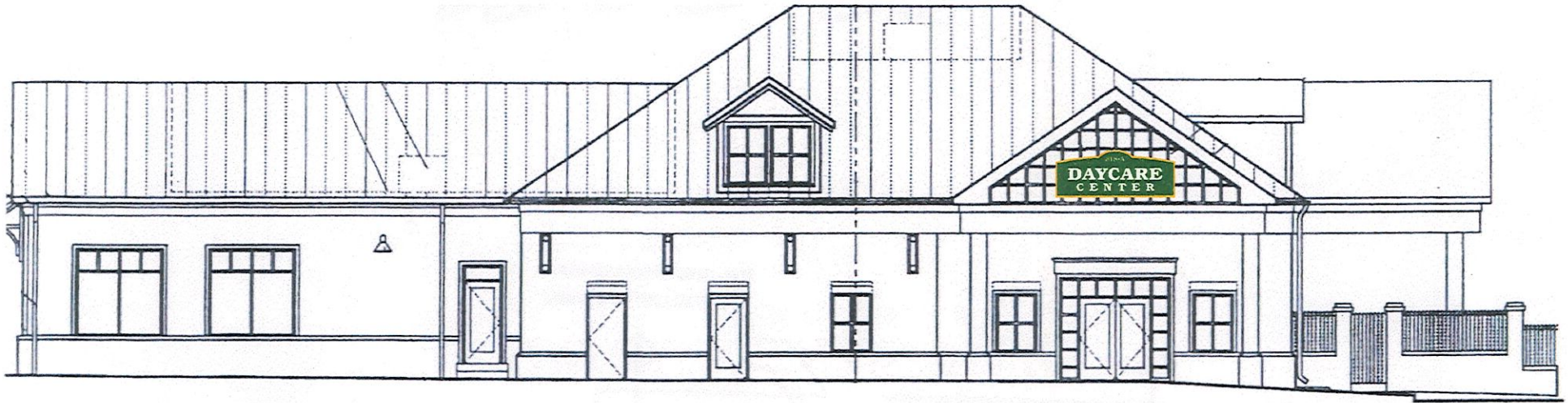
Notes: _____

STAFF, BOARD OF ARCHITECTURAL REVIEW

02/16/2007
APPROVAL DATE

THESE DRAWINGS MAY NOT BE CHANGED WITHOUT PRIOR APPROVAL FROM STAFF OR THE BOARD OF ARCHITECTURAL REVIEW.

Copyright © 2006 Signs by Dave. All works of authorship on this medium are original, and all rights thereto are reserved. Conveyance of this medium to a third party does not constitute a license to reproduce, use, or copy this work of authorship in any manner.



SIGN: 48X120

SOUTH ELEVATION BUILDING 1

TOWN OF LEESBURG, VIRGINIA BOARD OF ARCHITECTURAL REVIEW

CASE # TLHP - 2007-0035

- ADMINISTRATIVE APPROVAL
- H-1 OVERLAY DISTRICT
- H-2 CORRIDOR OVERLAY DISTRICT / PROFFER

Notes:

[Signature]
 STAFF, BOARD OF ARCHITECTURAL REVIEW

07/16/2007
 APPROVAL DATE

THESE DRAWINGS MAY NOT BE CHANGED WITHOUT PRIOR APPROVAL FROM STAFF OR THE BOARD OF ARCHITECTURAL REVIEW.

Copyright © 2006 Signs by Dave. All works of authorship on this medium are original, and all rights thereto are reserved. Conveyance of this medium to a third party does not constitute a license to reproduce, use, or copy this work of authorship in any manner.



EAST ELEVATION BUILDING 1

NO SIGNAGE

TOWN OF LEESBURG, VIRGINIA BOARD OF ARCHITECTURAL REVIEW
CASE # TLHP - 2007-0035
 ADMINISTRATIVE APPROVAL
 H-1 OVERLAY DISTRICT
 H-2 CORRIDOR OVERLAY DISTRICT / PROFFER
Notes: _____

STAFF, BOARD OF ARCHITECTURAL REVIEW
07/16/2007
APPROVAL DATE
THESE DRAWINGS MAY NOT BE CHANGED WITHOUT PRIOR APPROVAL FROM STAFF OR THE BOARD OF ARCHITECTURAL REVIEW.

Copyright © 2006 Signs by Dave. All works of authorship on this medium are original, and all rights thereto are reserved. Conveyance of this medium to a third party does not constitute a license to reproduce, use, or copy this work of authorship in any manner.



SIGN: 34" X 120"

SIGN: 36" X 48"

SIGN: 36" X 48"

SIGN: 36" X 48"

WEST ELEVATION BUILDING 1

TOWN OF LEESBURG, VIRGINIA BOARD OF ARCHITECTURAL REVIEW

CASE# TLHP - 2007-0035

- ADMINISTRATIVE APPROVAL
- H-1 OVERLAY DISTRICT
- H-2 CORRIDOR OVERLAY DISTRICT / PROFFER

Notes:

[Handwritten Signature]
 STAFF, BOARD OF ARCHITECTURAL REVIEW

07/16/2007
 APPROVAL DATE

THESE DRAWINGS MAY NOT BE CHANGED WITHOUT PRIOR APPROVAL FROM STAFF OR THE BOARD OF ARCHITECTURAL REVIEW.

Copyright © 2006 Signs by Dave. All works of authorship on this medium are original, and all rights thereto are reserved. Conveyance of this medium to a third party does not constitute a license to reproduce, use, or copy this work of authorship in any manner.





SIGN: 14" X 48"

SIGN: 34" X 120"

SIGN: 24" X 84"

SIGN: 24" X 84"

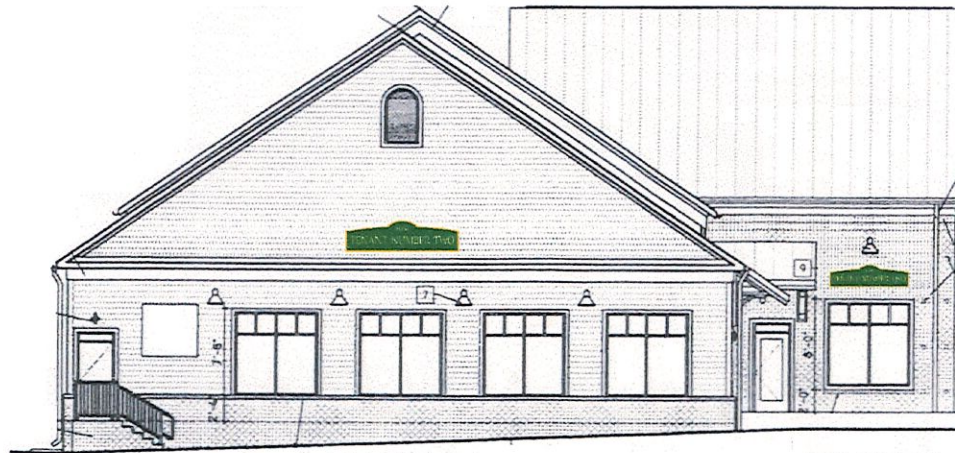
SIGN: 34" X 120"

NORTH ELEVATION - BUILDING 2

TOWN OF LEESBURG, VIRGINIA BOARD OF ARCHITECTURAL REVIEW
 CASE # TLHP - 2007-0035
 RESIDENTIAL APPROVAL
 H-1 OVERLAY DISTRICT
 H-2 CORRIDOR OVERLAY DISTRICT / PROFFER
 Notes: _____
 _____ 07/16/2007
 STAFF, BOARD OF ARCHITECTURAL REVIEW APPROVAL DATE
 THESE DRAWINGS MAY NOT BE CHANGED WITHOUT PRIOR APPROVAL FROM STAFF OR THE BOARD OF ARCHITECTURAL REVIEW.

Copyright © 2006 Signs by Dave. All works of authorship on this medium are original, and all rights thereto are reserved. Conveyance of this medium to a third party does not constitute a license to reproduce, use, or copy this work of authorship in any manner.





SIGN: 34" X 120"

SIGN: 24" X 84"

EAST ELEVATION BUILDING 2

TOWN OF LEESBURG, VIRGINIA BOARD OF ARCHITECTURAL REVIEW

CASE # TLHP - 2007-0035

- ADMINISTRATIVE APPROVAL
- H-1 OVERLAY DISTRICT
- H-2 CORRIDOR OVERLAY DISTRICT / PROFFER

Notes: _____

[Signature] 07/14/2007
 STAFF, BOARD OF ARCHITECTURAL REVIEW APPROVAL DATE

THESE DRAWINGS MAY NOT BE CHANGED WITHOUT PRIOR APPROVAL FROM STAFF OR THE BOARD OF ARCHITECTURAL REVIEW.

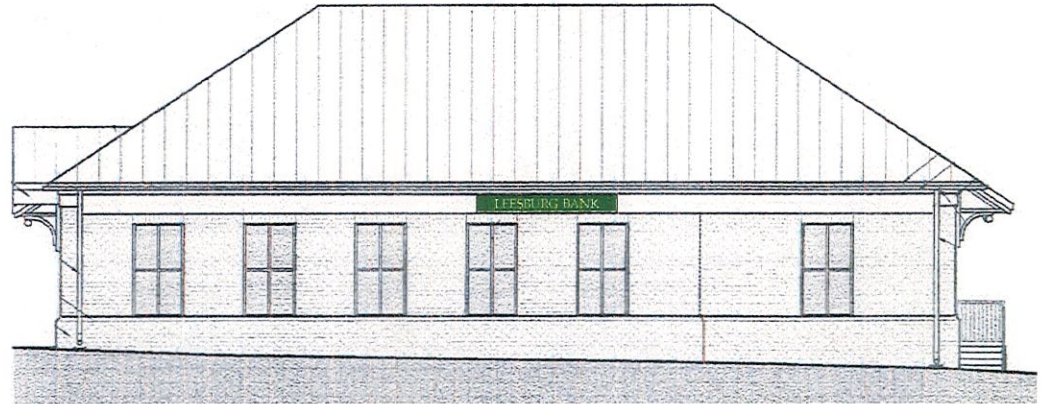
Copyright © 2006 Signs by Dave. All works of authorship on this medium are original, and all rights thereto are reserved. Conveyance of this medium to a third party does not constitute a license to reproduce, use, or copy this work of authorship in any manner.



REVISED EAST AND NORTH ELEVATION



SIGNS: 24" X 96"



SIGN: 16" X 120"

EAST AND NORTH ELEVATION BUILDING 3

TOWN OF LEESBURG, VIRGINIA BOARD OF ARCHITECTURAL REVIEW

CASE # TLHP - 2007-0035

- ADMINISTRATIVE APPROVAL
- H-1 OVERLAY DISTRICT
- H-2 CORRIDOR OVERLAY DISTRICT / PROFFER

Notes:

[Handwritten Signature] 07/16/2007
 STAFF, BOARD OF ARCHITECTURAL REVIEW APPROVAL DATE

THESE DRAWINGS MAY NOT BE CHANGED WITHOUT PRIOR APPROVAL FROM STAFF OR
 OF THIS MEDIUM TO A THIRD PARTY DOES NOT CONSTITUTE A LICENSE TO REPRODUCE, USE, OR COPY THIS WORK OF AUTHORSHIP IN ANY MANNER.

Copyright © 2006 Signs by Dave. All works of authorship on this medium are original and all rights therein are reserved. Conveyance of this medium to a third party does not constitute a license to reproduce, use, or copy this work of authorship in any manner.