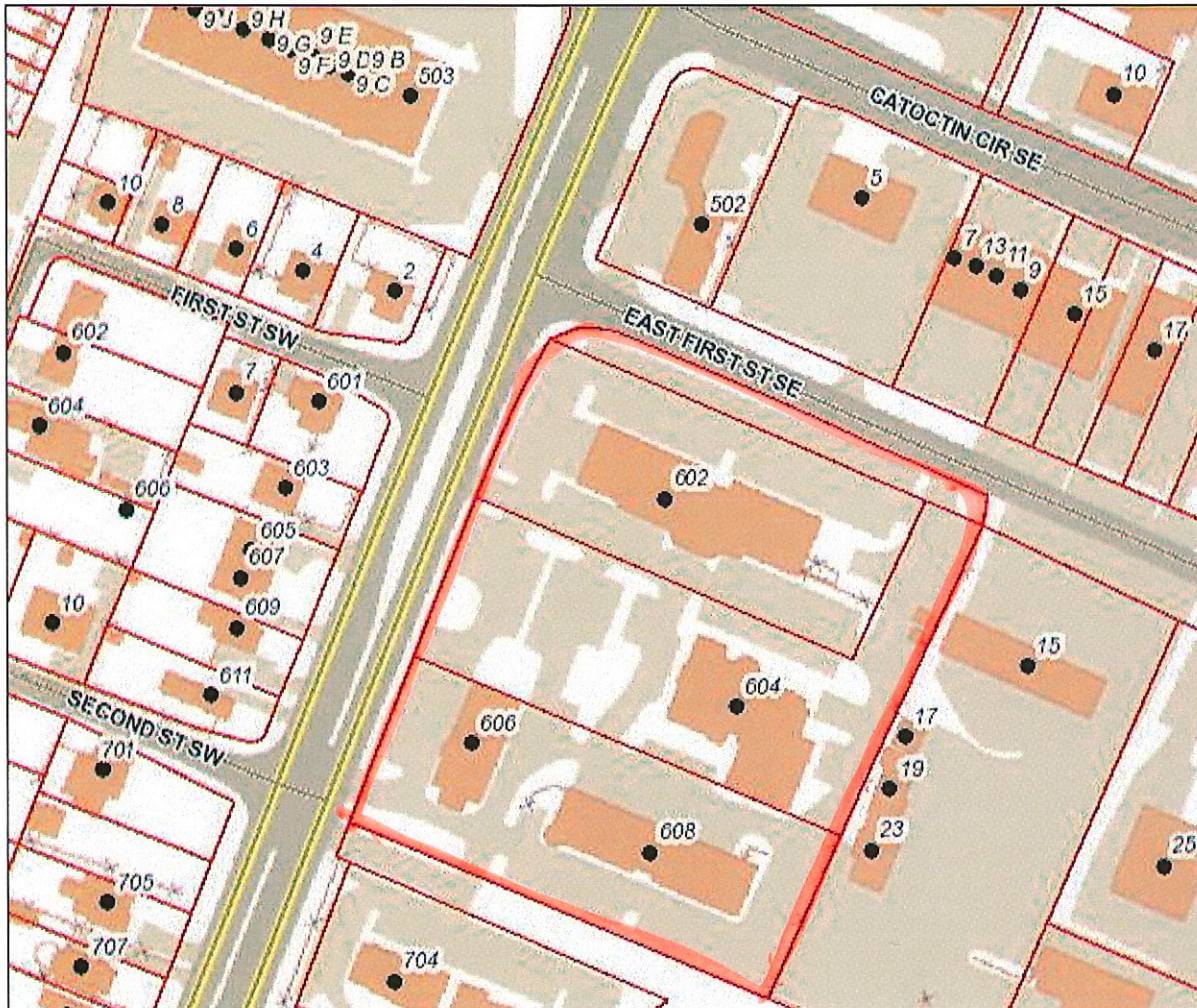




**Loudoun County, Virginia**  
www.loudoun.gov

Friday, March 8, 2019

(map not to scale)



WAVERLY PARK PROFESSIONAL OFFICE BLDGS.  
602-608 SOUTH KING STREET      ZONING DISTRICT:CD-C  
PIN #:232-47-3371-000,232-47-2957-000,232-47-3215 (001-008)  
**CSP: NO CSP**

Property Search Loudoun.gov

- Profile
- Values
- Sales / Transfers
- Land
- Land Use Status
- Residential
- Detached Structures
- Commercial
- Map
- WebLogs
- Aerial Photos
- Tax History / Payment
- Parcel Tracking

PARID: 232473371000  
 WAVERLY PARK LIMITED PARTNERSHIP, 602 KING ST S

1 of 1

**Owner**

Name	WAVERLY PARK LIMITED PARTNERSHIP
Care Of	ATTN: MALCOLM MATHESON III
Mailing Address	604 S KING ST STE 1
	LEESBURG VA 20175-3911
Instrument Number	
Book	987
Page	919

- Actions**
- Neighborhood
  - Sales
  - Printable
  - Summary
  - Printable Version

**Parcel**

Primary Address	602 S KING ST
Tax Map #	148/K13111/31
State Use Class	Commercial/Indust
Total Land Area (Acreage)	1.06
Total Land Area (SQFT)	
Election District	LEESBURG
Billing District	Leesburg Town
Billing Split Notes 1	
Billing Split Notes 2	
Special Ad Valorem Tax District	None
Special Project District	
Neighborhood	461
Living Units	
Structure Occupancy	OFFICE BUILDING
Condominium Garage Unit or Parking Space	NO
Subdivision	WAVERLY PARK
Affordable Dwelling Unit (Y/N)	NO: PROPERTY IS NOT ADU.
Ag District	
Ag District Starting Date	
Ag District End Date	
Deactivation Status	

**Legal Description**

Legal Description	WAVERLY PARK LOT 3 854--422 987--919 AMENDMT
-------------------	---

**General Information**

Loudoun County is providing public record information as a public service in accordance with Virginia Code Title 58.1-3122.2 (1998). The Loudoun County Commissioner of the Revenue provides annual valuations and maintenance of fair market values for equitable assessments on all types of real property.

The property information made available on this site includes ownership and deed information, legal description, sales information, assessment values and house characteristics and can be searched by Parcel ID Number, Address and Tax Map Number. The site is updated weekly. Parcels are linked to the Loudoun County GIS, with map overlays displaying boundary and environmental information such as topography, soils, flood plain and major roads.

Condominium garage units or assigned parking spaces associated with condominiums may have separate parcel identification numbers - and may be assessed separately.

**Tax History / Payment**

Click on the Parcel ID to view its related document  
[232473371000](#)

Location Google Map  
 1 Harrison St, S.E., 5th Floor,

Contact Us  
 Phone: (703) 777-0260  
 Fax: (703) 771-5234

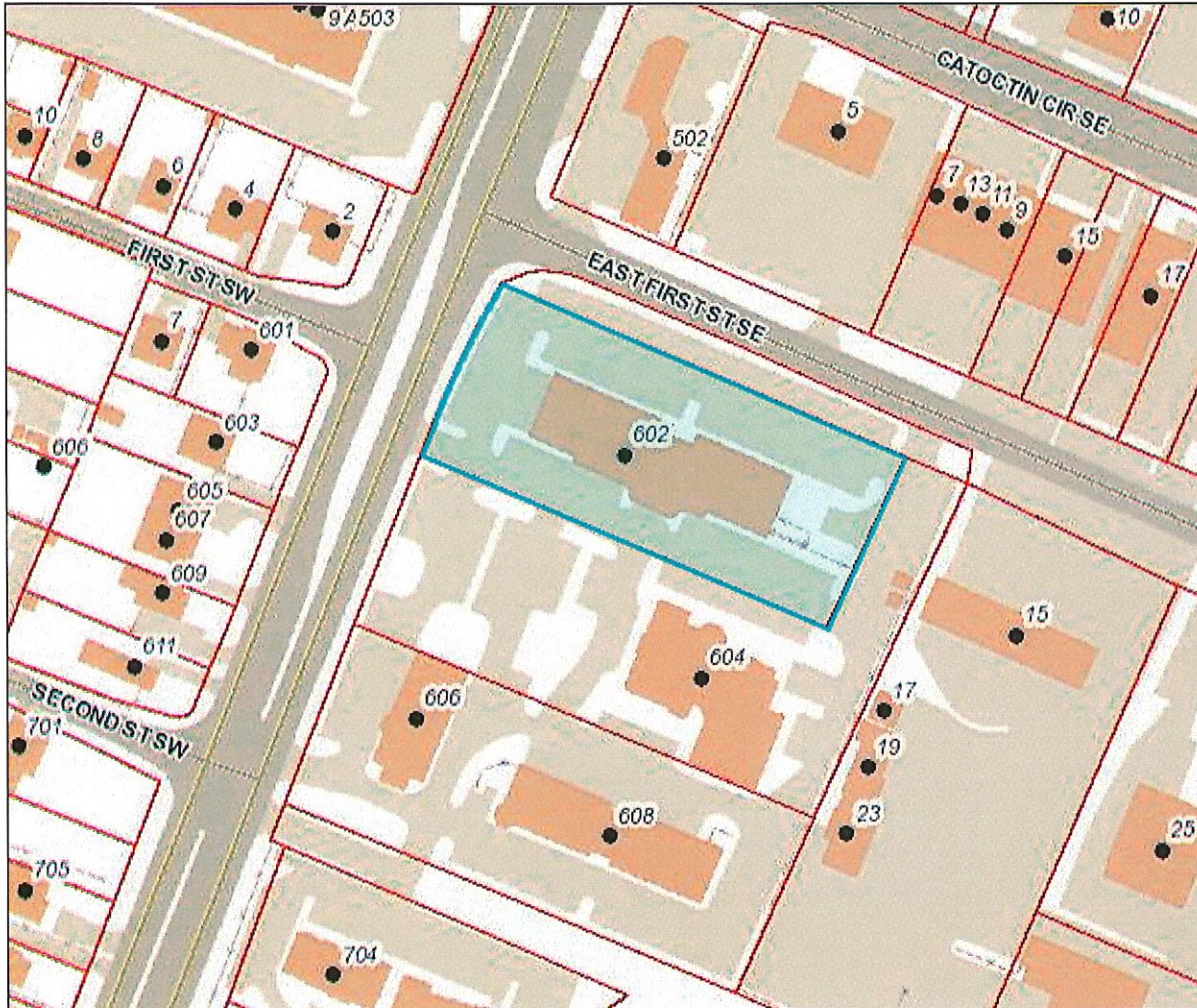
Site Links  
[Loudoun.gov](#)



**Loudoun County, Virginia**  
www.loudoun.gov

Friday, March 8, 2019

(map not to scale)



WAVERLY PARK PROFESSIONAL OFFICE BLDGS.  
602 SOUTH KING STREET  
PIN #:232-47-3371-000  
**CSP: NO CSP**

ZONING DISTRICT: CD-C

Property Search Loudoun.gov

<b>Profile</b>	PARID: 232472957000	604 KING ST S
<b>Values</b>	WAVERLY MANSION LLC,	
<b>Sales / Transfers</b>	<b>Owner</b>	
<b>Land</b>	Name	WAVERLY MANSION LLC
<b>Land Use Status</b>	Care Of	
<b>Residential</b>	Mailing Address	604 S KING ST STE 1
<b>Detached Structures</b>		
<b>Commercial</b>	Instrument Number	LEESBURG VA 20175-3911 201812130071411
<b>Map</b>	Book	
<b>WebLogis</b>	Page	
<b>Aerial Photos</b>	<b>Parcel</b>	
<b>Tax History / Payment</b>	Primary Address	604 S KING ST
<b>Parcel Tracking</b>	Tax Map #	148/K13//11
	State Use Class	Commercial/Indust
	Total Land Area (Acreage)	1.32
	Total Land Area (SQFT)	
	Election District	LEESBURG
	Billing District	Leesburg Town
	Billing Split Notes 1	
	Billing Split Notes 2	
	Special Ad Valorem Tax District	None
	Special Project District	
	Neighborhood	461
	Living Units	
	Structure Occupancy	OFFICE BUILDING
	Condominium Garage Unit or Parking Space	NO
	Subdivision	WAVERLY PARK
	Affordable Dwelling Unit (Y/N)	NO: PROPERTY IS NOT ADU.
	Ag District	
	Ag District Starting Date	
	Ag District End Date	
	Deactivation Status	

1 of 1

- Actions**
- Neighborhood
  - Sales
  - Printable
  - Summary
  - Printable Version

Legal Description

Legal Description	WAVERLY PARK LOT 1
	854--422 987--919 AMENDMT 2379--326 ESMT

General Information

Loudoun County is providing public record information as a public service in accordance with Virginia Code Title 58.1-3122.2 (1998). The Loudoun County Commissioner of the Revenue provides annual valuations and maintenance of fair market values for equitable assessments on all types of real property.

The property information made available on this site includes ownership and deed information, legal description, sales information, assessment values and house characteristics and can be searched by Parcel ID Number, Address and Tax Map Number. The site is updated weekly. Parcels are linked to the Loudoun County GIS, with map overlays displaying boundary and environmental information such as topography, soils, flood plain and major roads.

Condominium garage units or assigned parking spaces associated with condominiums may have separate parcel identification numbers - and may be assessed separately.

Tax History / Payment

Click on the Parcel ID to view its related document  
[232472957000](#)

Location Google Map  
 1 Harrison St, S.E., 5th Floor,

Contact Us  
 Phone: (703) 777-0260  
 Fax: (703) 771-5234

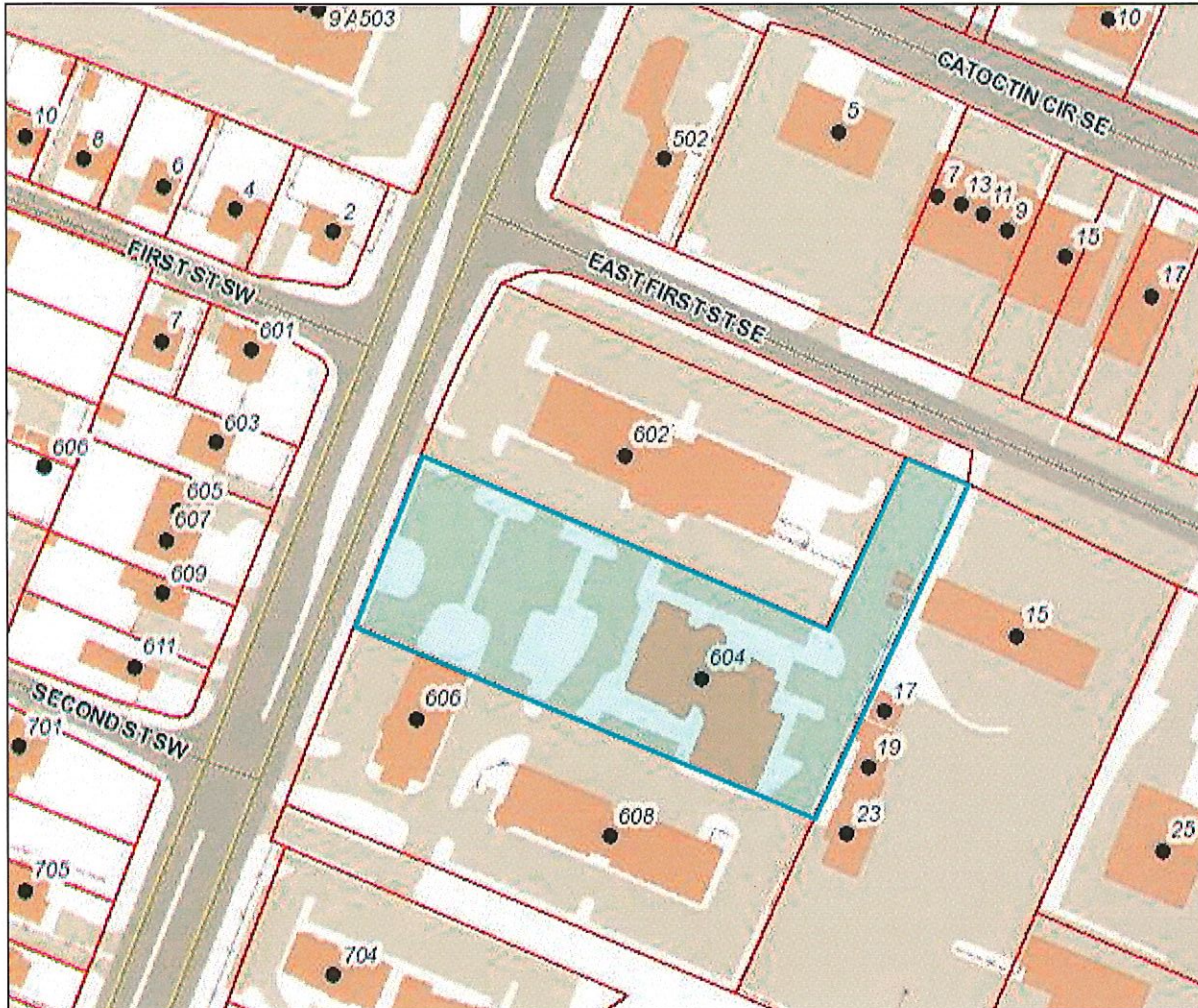
Site Links  
[Loudoun.gov](#)



**Loudoun County, Virginia**  
www.loudoun.gov

Friday, March 8, 2019

(map not to scale)



WAVERLY PARK PROFESSIONAL OFFICE BLDGS.  
604 SOUTH KING STREET  
PIN #: 232-47-2957-000  
**CSP: NO CSP**

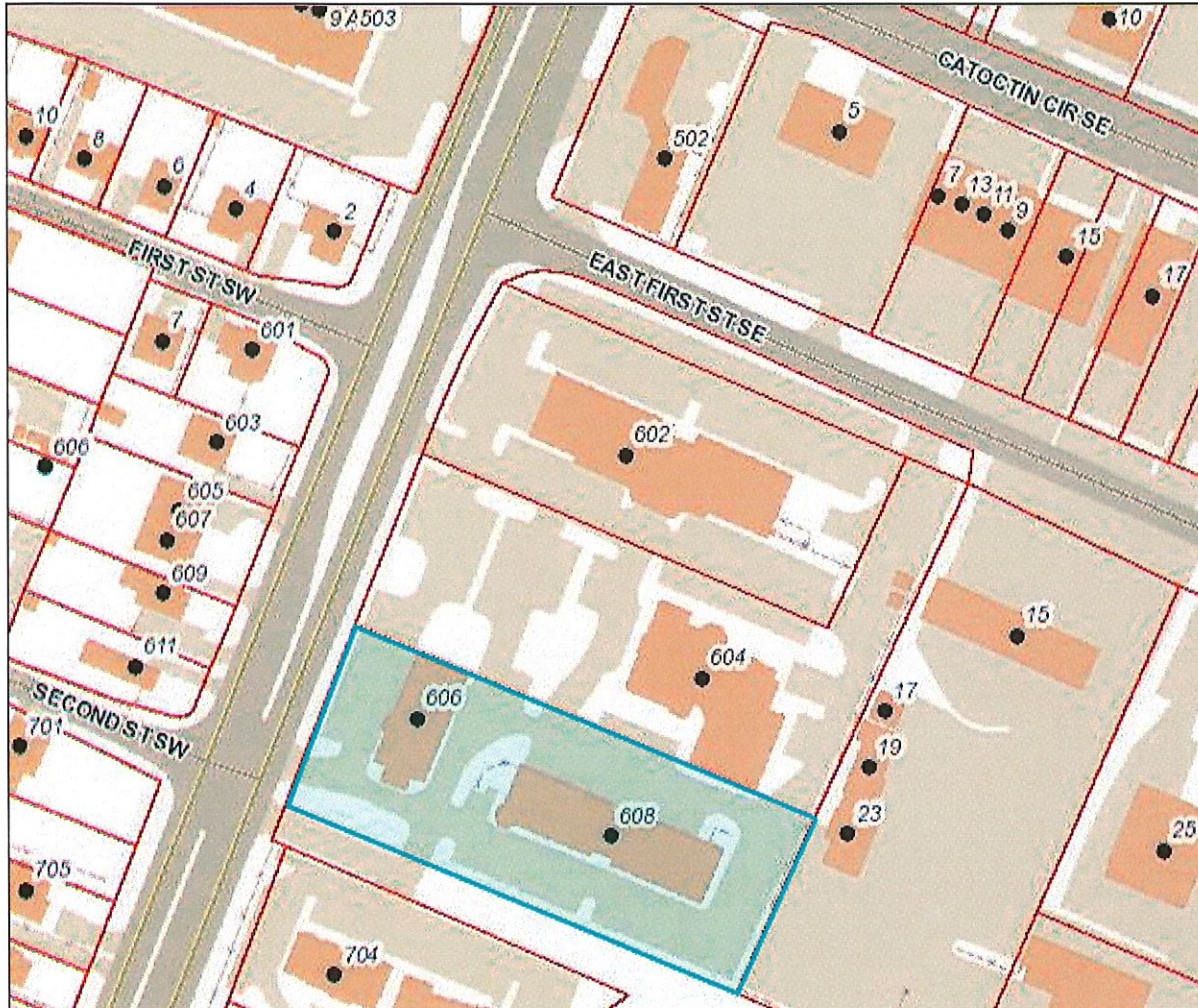
ZONING DISTRICT: CD-C



**Loudoun County, Virginia**  
www.loudoun.gov

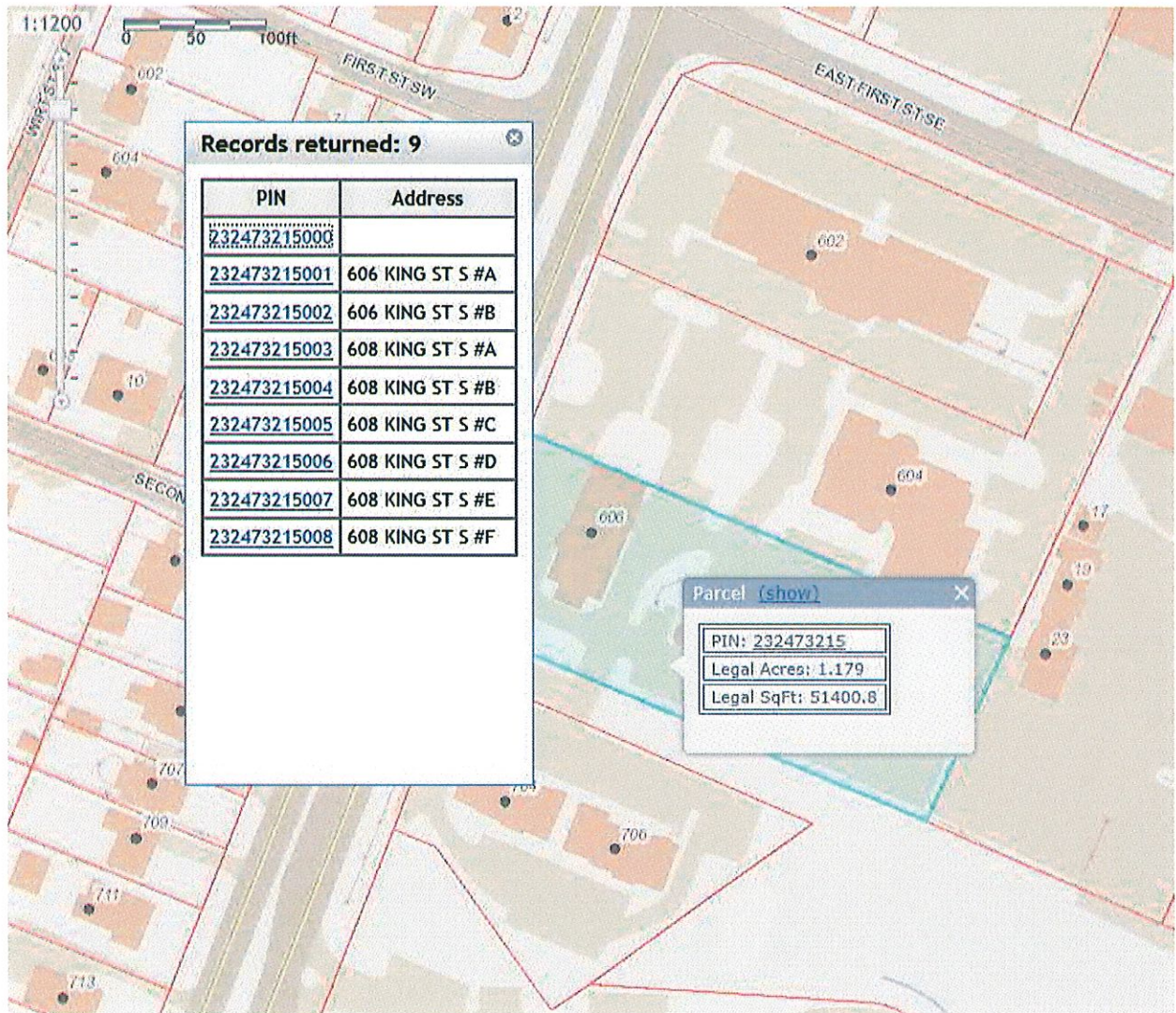
Friday, March 8, 2019

(map not to scale)



WAVERLY PARK PROFESSIONAL OFFICE BLDGS.  
606 & 608 SOUTH KING STREET  
PIN #:232-47-3215-(001-008)  
**CSP: NO CSP**

ZONING DISTRICT: CD-C



WAVERLY PARK PROFESSIONAL OFFICE BLDGS.

606 & 608 SOUTH KING STREET

ZONING DISTRICT: CD-C

PIN #: 232-47-3215-(001-008)

CSP: NO CSP