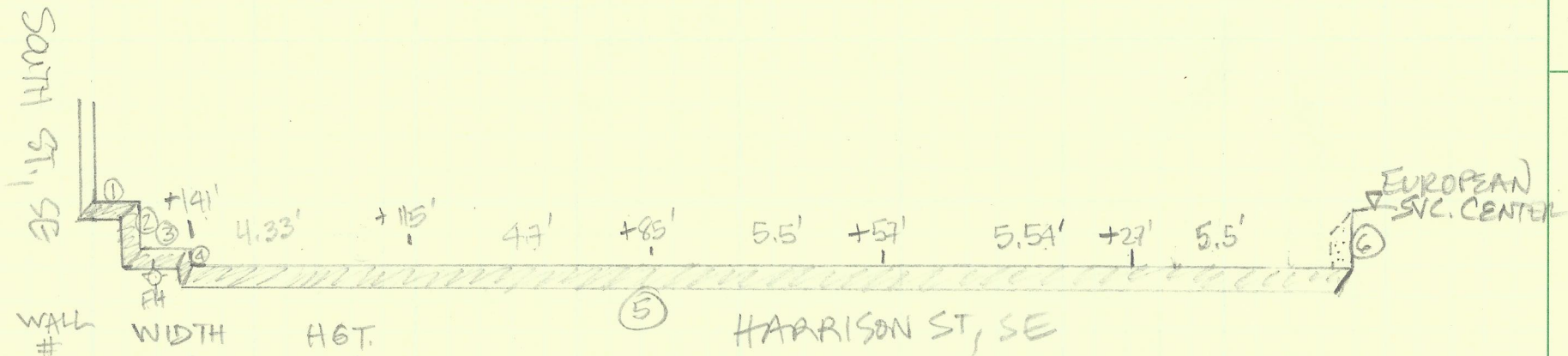


COPA: HARRISON ST. WALL



WALL #	WIDTH	HGT.
1.	5.4'	3.9'
2.	5.7'	3.9.
3.	5.8'	4.1'
4.	2.0'	4.4'
5.	141.6'	5.1' AVG.
6.	7.0'	5.1'

WALL THICKNESS: 9" - 12"

TOTAL SQ. FT. := ± 834 SF.

Anne Geiger

From: Charles H. Monger
Sent: Friday, December 20, 2019 10:41 AM
To: Anne Geiger
Cc: O.J. Jackson; Eddie Brown; Danielle Southerland
Subject: Harrison St Retaining Wall Measurements

Anne – I took a number of measurements so I thought it would be better to list it in an email instead of the picture. The stations at the south end of the main wall are very close to the vertical joints in the concrete wall. The total length of the main wall, without the jogs to the east, is 141' 7", with the depth being 12" and the height being at the approximate stations listed here starting at the corner at the south end: Sta 27' – 66" h; Sta 57' – 66.5"; Sta 85' – 66"; Sta 115' – 56.5"; Sta 141' – 52" (corner where the jogs start near South St). The jog next to the European Service front door is 12" deep, 61.5" (avg) height and 83.5" (avg) wide. The jog to the east beside the fire hydrant is 9" deep, 24" wide, and 53" high. The section facing Harrison behind the fire hydrant is 9" deep, 49.5" (avg) high, and 69" high. The next jog (moving north) going east is 9" deep, 68" wide, and 47.5" high. The last section facing Harrison, right at the corner of South St (retaining wall going to the east) is 9" deep, 65.5" wide, and 47.5" high. The depth measurements are the thickness of the wall with the main section and the part going back (east) to the European Service building being 12" deep and the rest of it (the jogs at the north end) are 9" deep. Let me know if you need anything else regarding the wall. Thanks,

Charlie

Charlie Monger
Construction Project Coordinator
Street Division
Town of Leesburg
(703) 737-7051
cmonger@leesburgva.gov

