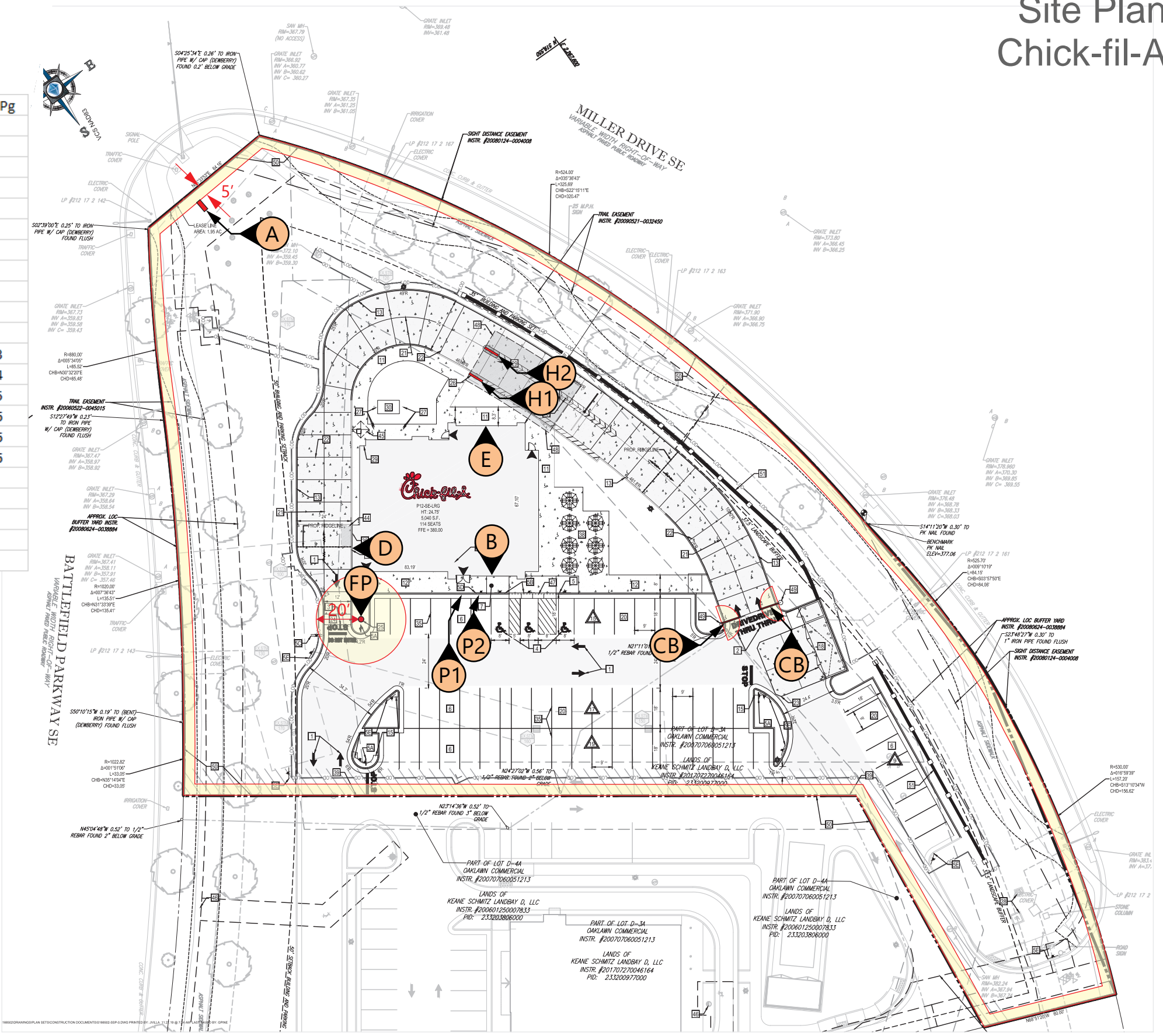


Table of Contents	
1	Location Map
2	Site Plan Chick-fil-A and Sign Schedule
3	Elevations Chick-fil-A
4	Sign Type A Chick-fil-A
5	Sign Type B, D, E Chick-fil-A
6	Sign Type CB Chick-fil-A
7	Sign Type FP Chick-fil-A
8	Sign Type H1/H2 Chick-fil-A
9	Sign Type P1/P2 Chick-fil-A
10	Sign Type Window Chick-fil-A
11	Site Plan Dunkin' and Sign Schedule
12	Elevations Dunkin' and tbd tenants
13	Sign Type Q Dunkin'
14	Sign Type R Dunkin'
15	Sign Type S Dunkin'
16	Sign Type T-1, T-2a/b tbd tenants

Sign Schedule

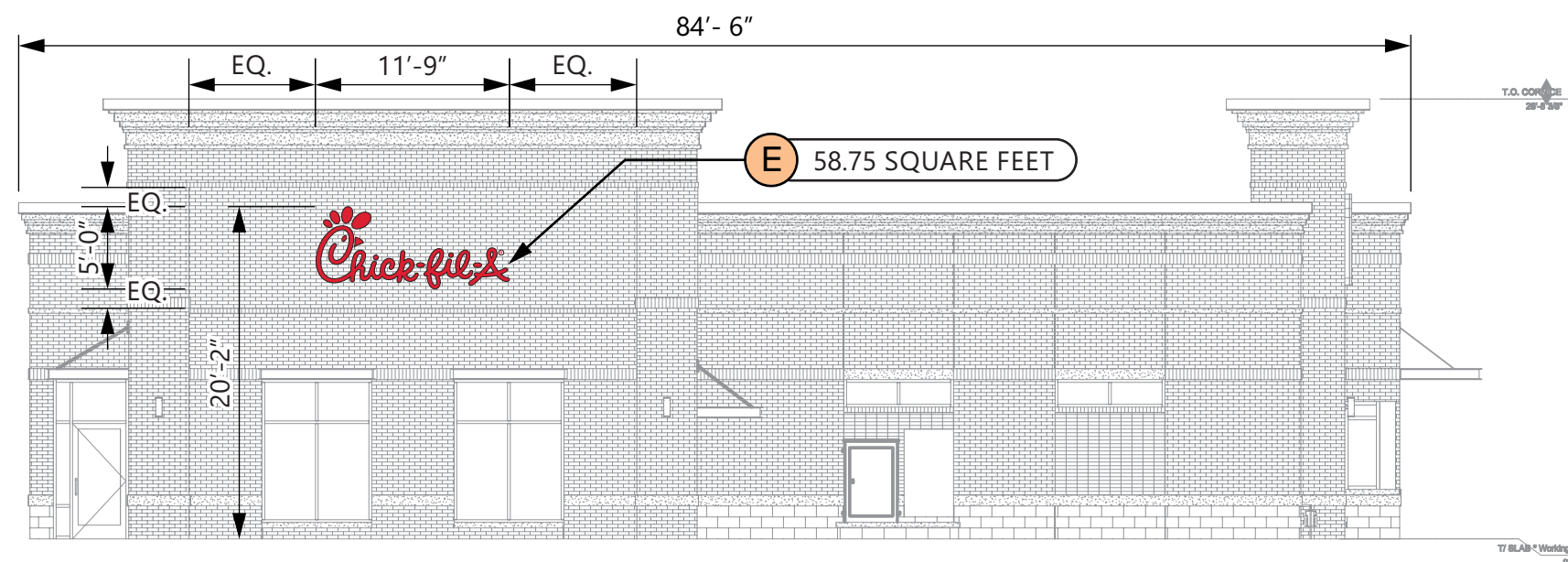
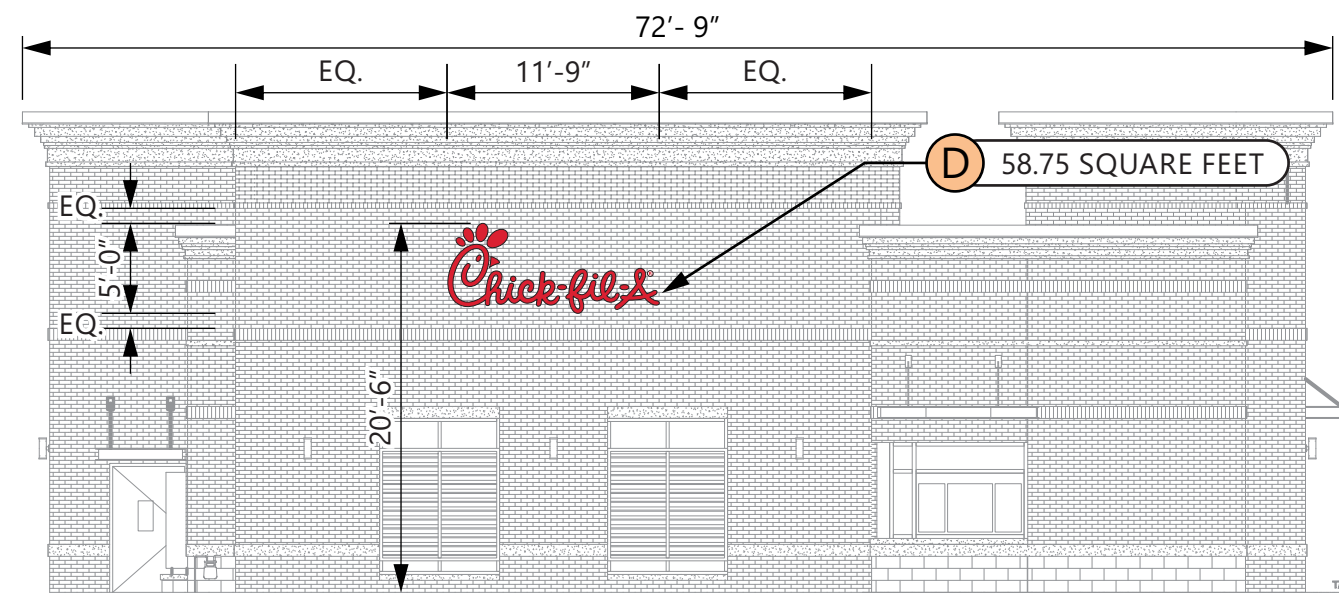
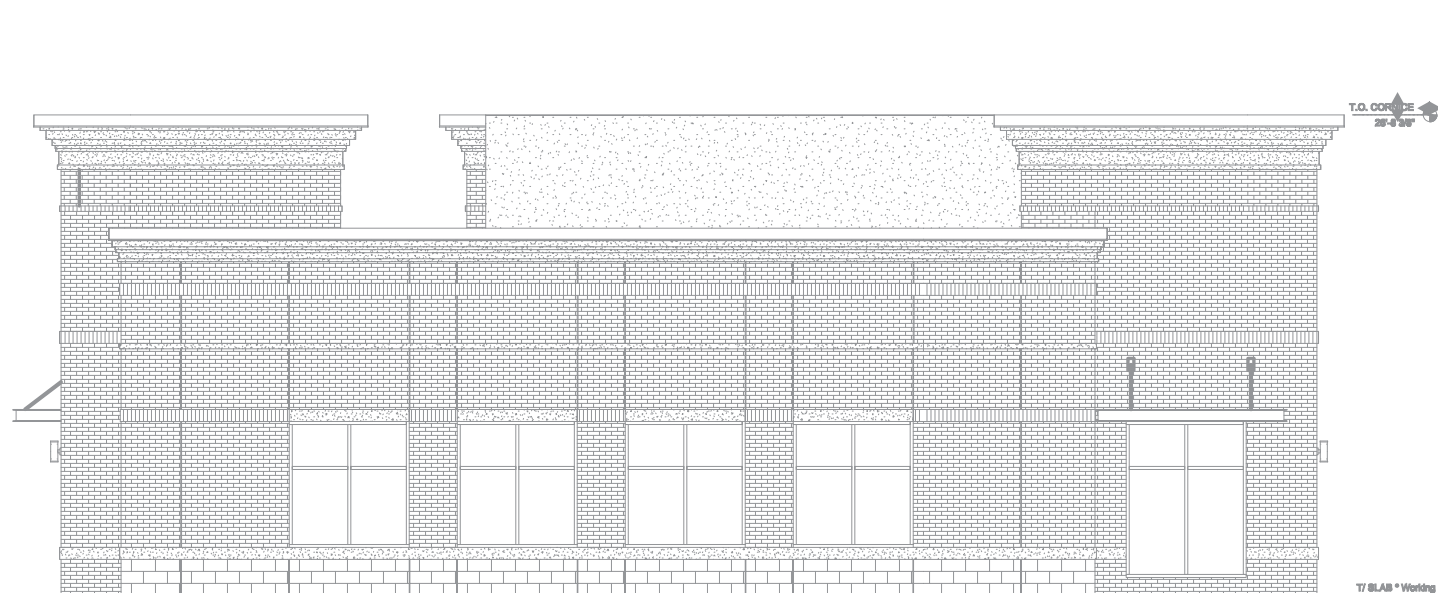
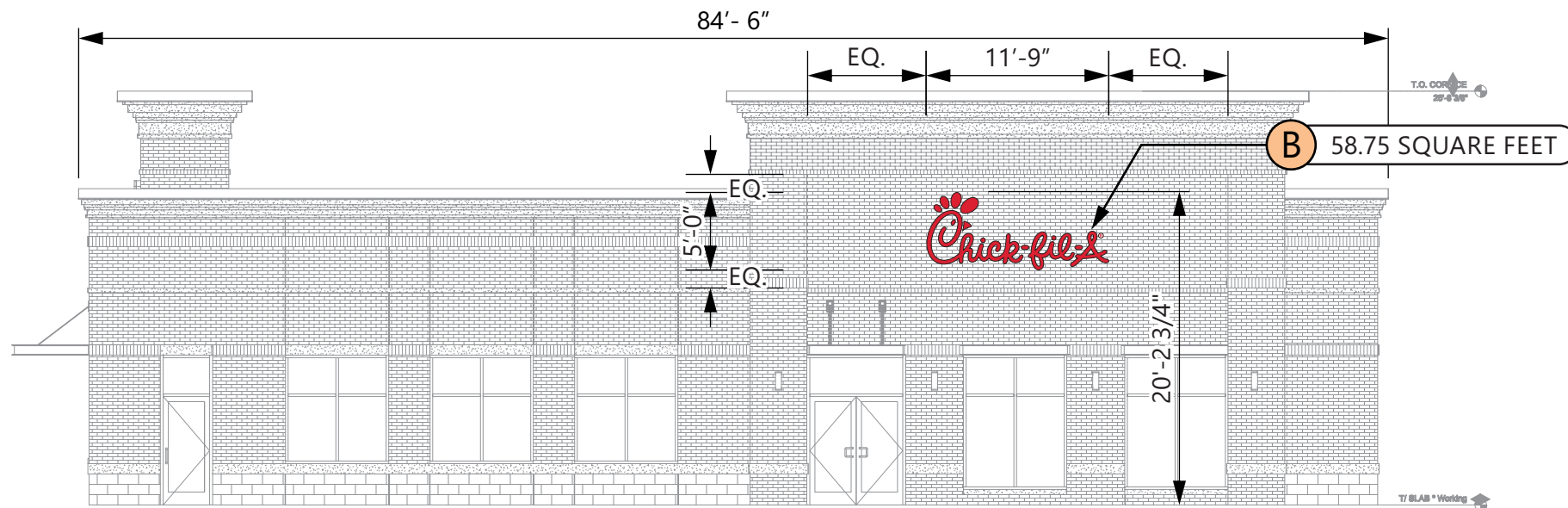
Item	Description	Tenant	Quantity	Sign Area	Allowed	Ref Pg
A	Main ID Sign	CFA	1	40	40	4
B	Wall Sign - 5' script	CFA	1	58.75	84.5	5
CB	Clearance Bar	CFA	2			6
D	Wall Sign - 5' script	CFA	1	58.75	72.75	5
E	Wall Sign - 5' script	CFA	1	58.75	84.5	5
FP	Flag Pole - 50'	CFA	1			7
G	** not used **	CFA				
H1	Menu Board - Lane 1	CFA	1			8
H2	Menu Board - Lane 2	CFA	1			8
I through N	** not used **					
P1/P2	DOT Curbside Orders	CFA	2			9
Q	42"H Directional Sign	DD	2			13
R	Wall Sign - 36"h letters	DD	1	17.35	73.33	14
S	Wall Sign - 18"h letters	DD	1	12.75	27.5	15
T-1	Wall Sign - 18"h letters	tbd	1	19.33	19.33	16
T-2a	Wall Sign - 18"h letters	tbd	1	20.5	20.5	16
T-2b	Wall Sign - 18"h letters	tbd	1	20.5	73.33	16
U through Z	** not used **					

CFA = Chick-Fil-A
DD = Dunkin'
tbd = to be determined



SCALE 1" = 50'

Elevations Chick-fil-A



ELEVATIONS

.E - 3/32" = 1'-0"

Sign Type A Chick-fil-A

SPECIFICATIONS

SIGN CABINET IS SIGN COMP #2005 EXTRUDED CABINET WITH A SIGN COMP # 2085/2095 BLEED FLEX FACE FRAME
 CABINET IS INTERNALLY ILLUMINATED WHITE LED 6500K LIGHTS, SPACED EVENLY. PAINT INTERIOR OF CABINETS MATTE WHITE.
 CLOSED SUNDAY PANEL (IF SHOWN)
 IS .125" ALUM. ROUTED FACE BACKED ACRYLIC.

MASONRY WORK AND CONCRETE PAD FOR MASONRY WORK IS FURNISHED BY THE GENERAL CONTRACTOR
 SIGN FOUNDATION IS FURNISHED BY CLAYTON SIGNS, INC.



3M #3630-53 TRANSLUCENT CARDINAL RED TENSION FRAME COVER TO BE PAINTED
 GENESIS M SINGLE STAGE (G2-SERIES) RED #48247



WHITE BLEED 3M PANOGRAPHIC III FLEX FACE
 W/ .125" #7328 WHITE PLEX

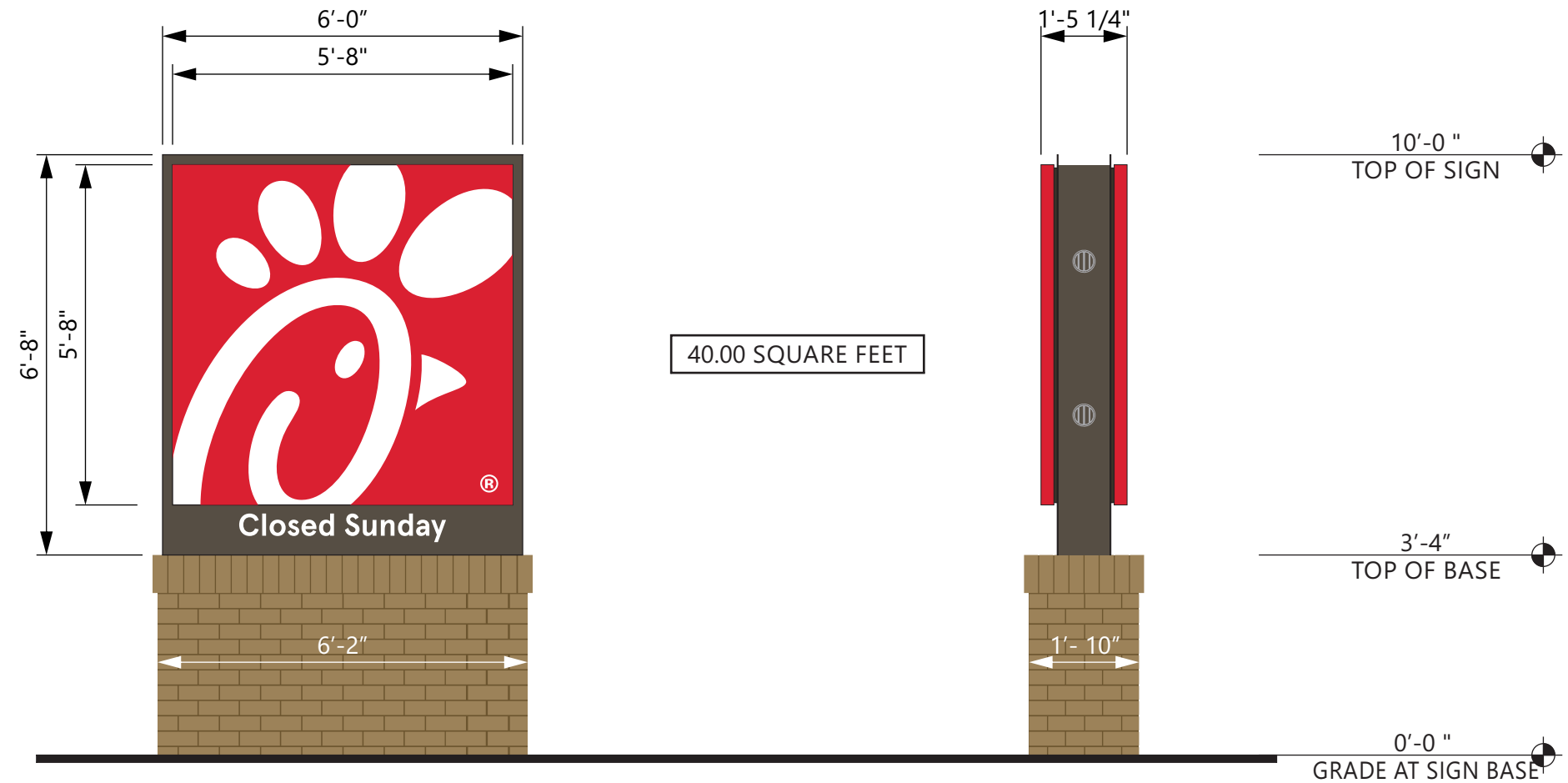


PAINTED MATTHEWS #74155 DARK BRONZE, SEMI-GLOSS



BRICK VENEER BY REDLAND BRICK
 COLOR: KHAKI MATT #840
 MORTAR: ARGOS SAN TAN

SEE ENGINEER STAMPED DRAWING FOR FOUNDATION DETAILS



ELEVATION

SCALE - 3/8" = 1'- 0"

END VIEW

SCALE - 3/8" = 1'- 0"

	DOUBLE FACED CABINET LED'S GEWHOSP6-71K -DOUBLE SIDED POWER SUPPLY GEPS24 - 24V POWER SUPPLY	WET LOCATION CONNECT THE AC LINE TO THE BLACK (LINE) AND WHITE (NEUTRAL) INPUT WIRES OF THE POWER SUPPLY USING 18-14 AWG TWIST ON WIRE CONNECTORS. GROUND POWER SUPPLY GREEN WIRE TO GROUNDING SCREW. REPLACE JUNCTION BOX COVER.
<small>THIS SIGN IS INTENDED TO BE INSTALLED IN ACCORDANCE WITH REQUIREMENTS OF ARTICLE 600 OF THE NATIONAL ELECTRICAL CODE AND/OR APPLICABLE LOCAL CODES. THIS INCLUDES PROPER GROUNDING & BONDING OF THE SIGN.</small>		

SPECIFICATIONS

CHICK-FIL-A SCRIPT LETTERS
 LETTERS ARE LED-ILLUMINATED
 CHANNEL LETTERS MOUNTED
 ON ALUMINUM SURFACE OF BUILDING
 WITH TRANSFORMERS REMOTELY
 LOCATED BEHIND THE WALL IN
 UL APPROVED TRANSFORMER BOXES.
 FACES ARE 3/16" ACRYLIC
 RETURNS ARE .063 ALUMINUM
 BACKS ARE .080 ALUMINUM
 ALL RETURNS ARE ARC-WELDED TO
 LETTER BACKS

CHANNEL LETTER FACES
 2793 RED ACRYLIC
 TRIMCAP RETAINER-
 1" RED JEWELITE TRIMCAP

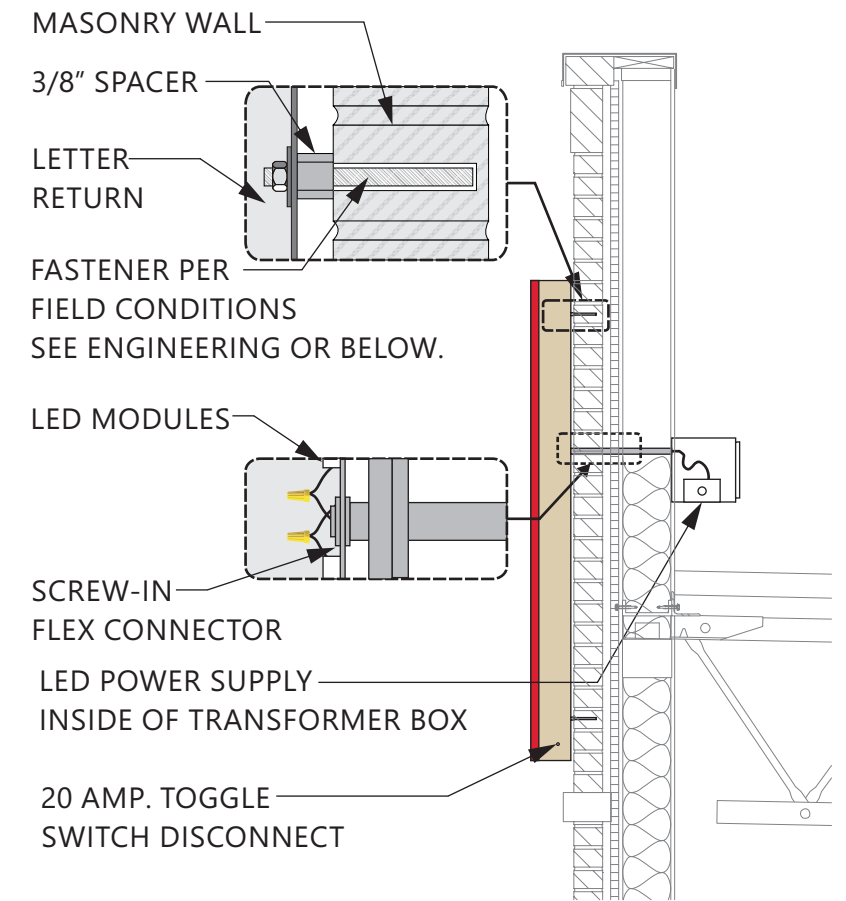
ALUMINUM RETURNS
 PAINTED TO MATCH
 SHERWIN WILLIAMS
 SW6108 LATTE



ELEVATION

SCALE - 1/2" = 1'- 0"

Sign Type B, D, E Chick-fil-A



FASTENER NOTE:
 USE 18-8 STAINLESS STEEL BOLTS W/ SPACERS THRU EIFS.
 EXPANSION BOLTS IN CONCRETE OR BRICK WALLS.
 TOGGLE BOLTS IN CONCRETE BLOCK OR PANEL WALLS.
 TEK SCREWS IN METAL STUDS. LAG-BOLTS IN WOOD STUDS.
 ALL THREAD BOLTS WITH BLOCKING BETWEEN STUDS.

CROSS-SECTION

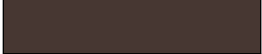
SCALE - 1/2" = 1'- 0"

CHANNEL LETTERS (RED ILLUMINATION)		WET LOCATION
	LED'S JTSL5016R-0.4 RED LED POWER SUPPLY BL-120-12-60 POWER SUPPLY	<p>CONNECT THE AC LINE TO THE BLACK (LINE) AND WHITE (NEUTRAL) INPUT WIRES OF THE POWER SUPPLY USING 18-14 AWG TWIST ON WIRE CONNECTORS. GROUND POWER SUPPLY GREEN WIRE TO GROUNDING SCREW. REPLACE JUNCTION BOX COVER.</p>
<p>THIS SIGN IS INTENDED TO BE INSTALLED IN ACCORDANCE WITH REQUIREMENTS OF ARTICLE 600 OF THE NATIONAL ELECTRICAL CODE AND/OR APPLICABLE LOCAL CODES. THIS INCLUDES PROPER GROUNDING & BONDING OF THE SIGN.</p>		

Sign Type CB Chick-fil-A

SPECIFICATIONS

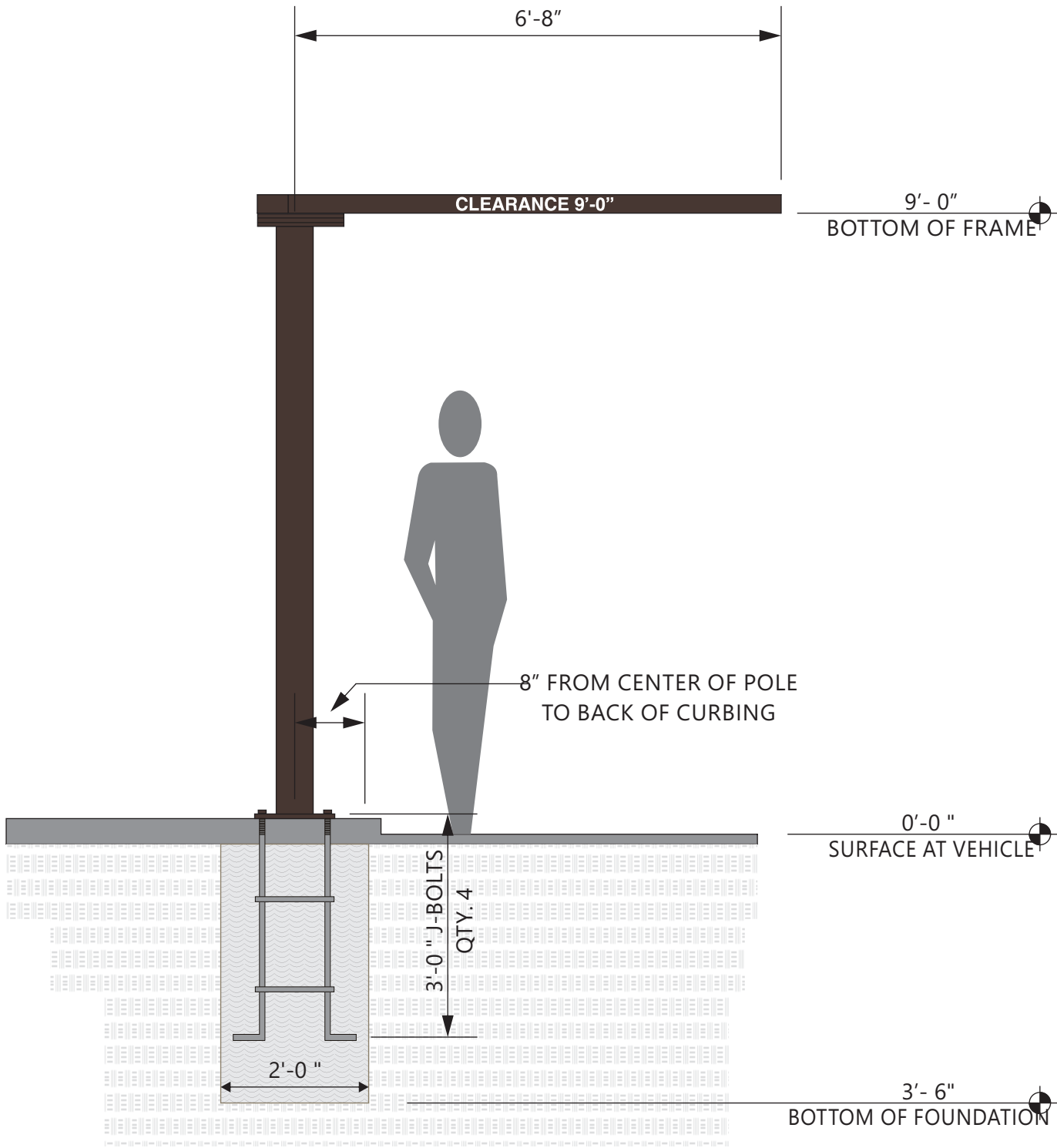
SUPPORT POLE
POLE HAS 13" x 13" x 3/4" THICK STEEL PLATE WITH FOUR(4) 1" DIA. HOLES IN EACH CORNER 2" FROM EACH END AND FOUR (4) ANCHOR BOLTS



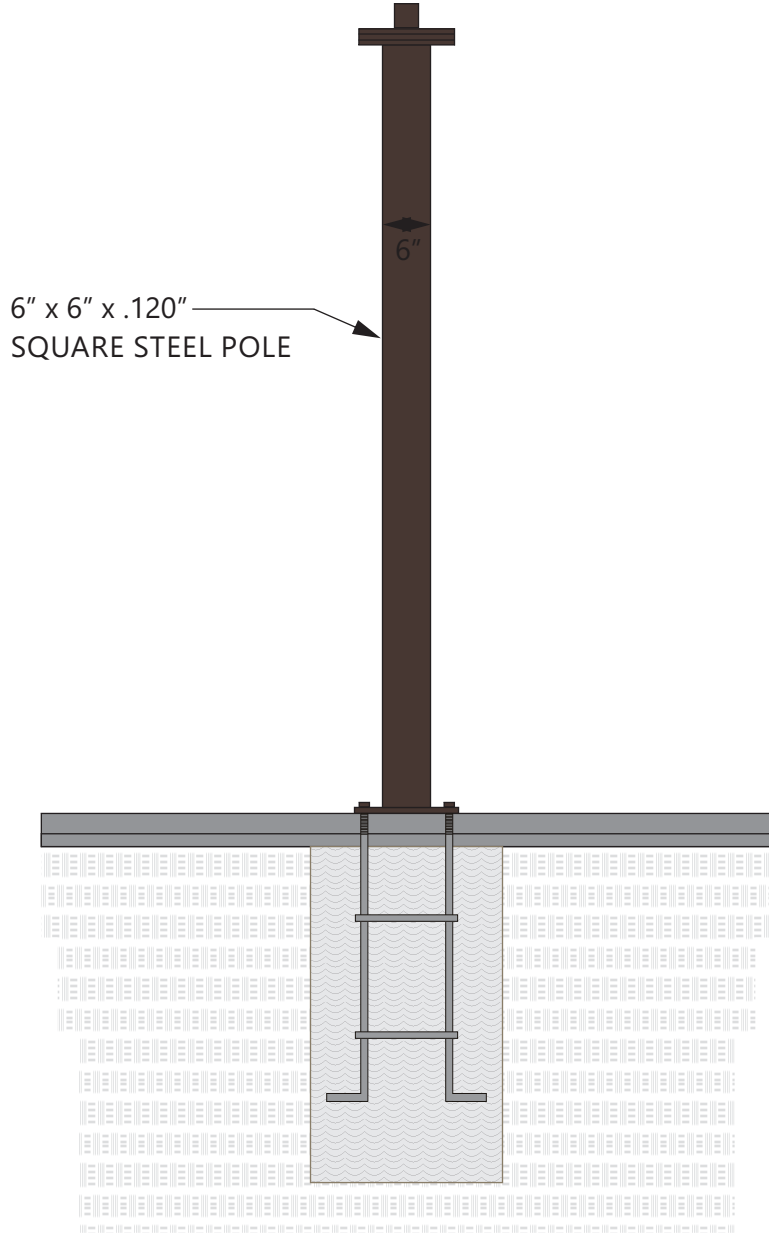
DARK BRONZE



GRAPHICS
WHITE HIGH PERFORMANCE VINYL FILM GRAPHICS



ELEVATION
SCALE - 1/2" = 1'- 0"

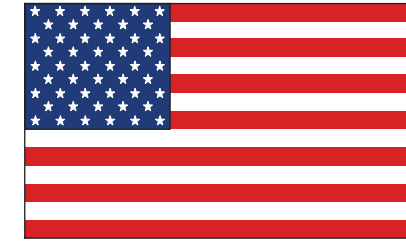
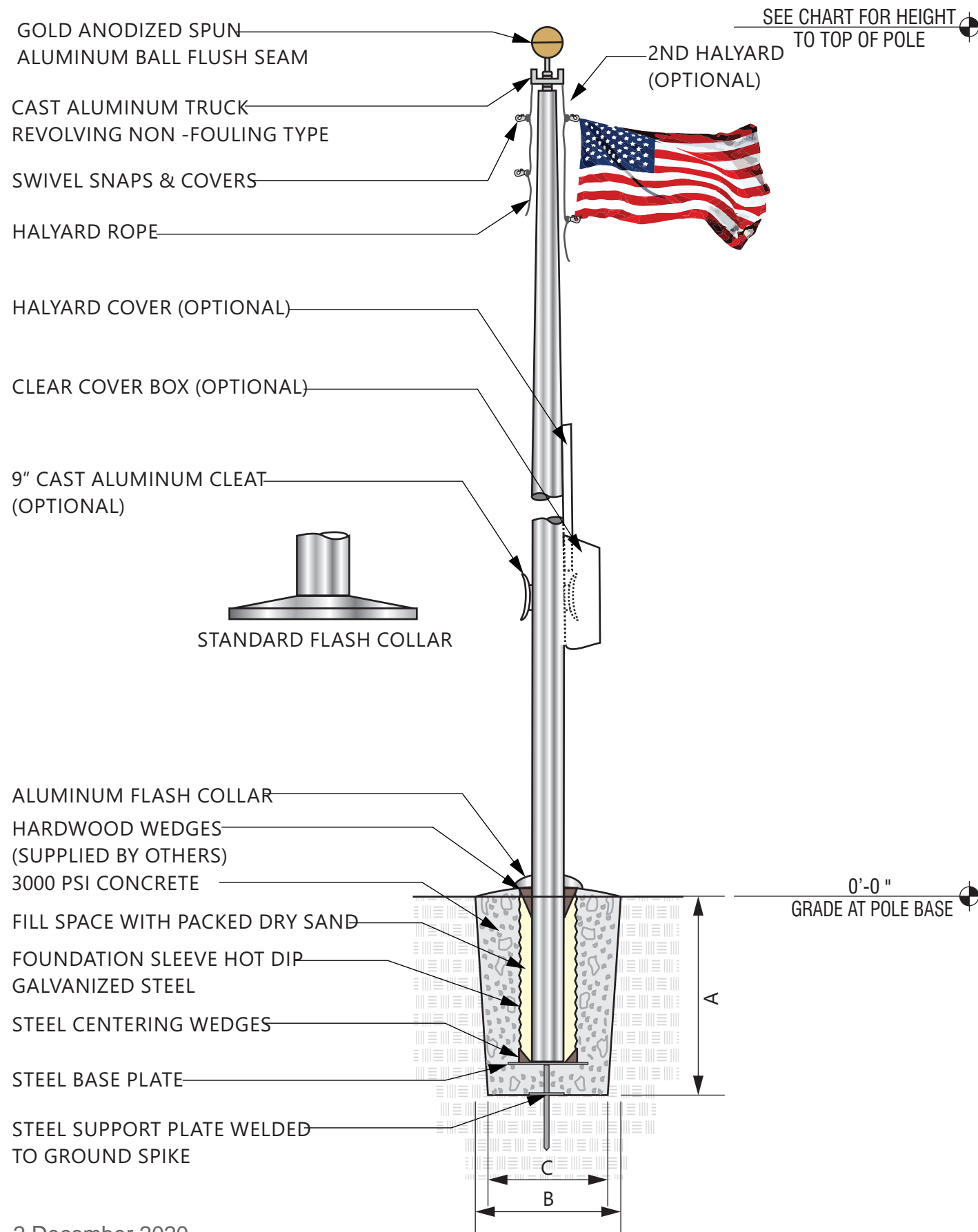


END VIEW
SCALE - 1/2" = 1'- 0"



2 December 2020

Sign Type FP Chick-fil-A



FLAG SIZES

POLE	A	B	MATERIAL
20'	3'0"	5'0"	POLYESTHER
25'	4'0"	6'0"	POLYESTHER
30'	5'0"	8'0"	POLYESTHER
35'	6'0"	10'0"	POLYESTHER
40'	8'0"	12'0"	POLYESTHER
45'	8'0"	12'0"	POLYESTHER
50'	12'0"	18'0"	POLYESTHER

FOUNDATION SIZES

HEIGHT	A	B	C
20'	3'6"	30"	24"
25'	3'6"	30"	24"
30'	3'6"	30"	24"
35'	4'0"	36"	30"
40'	4'6"	42"	36"
45'	5'0"	48"	42"
50'	5'6"	48"	42"

GROUND SLEEVE AND CONCRETE INSTALLED BY THE GENERAL CONTRACTOR
POLE INSTALLED ON PRE-INSTALLED GROUND SLEEVE BY SIGN CONTRACTOR

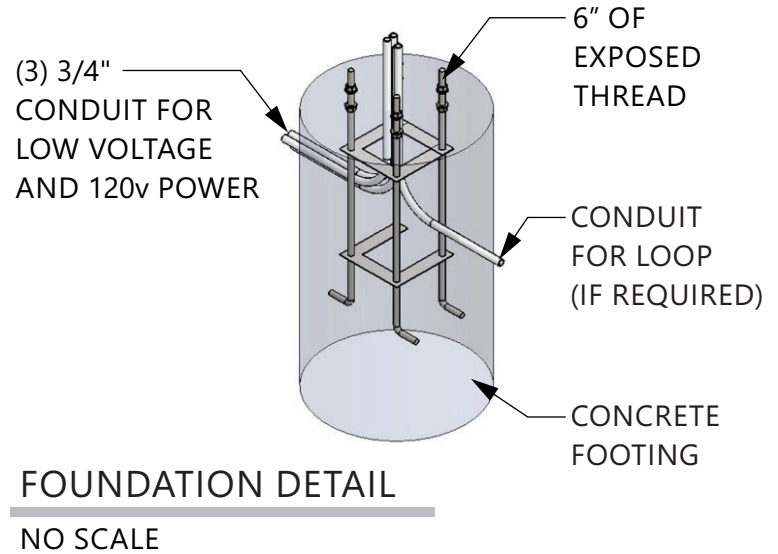
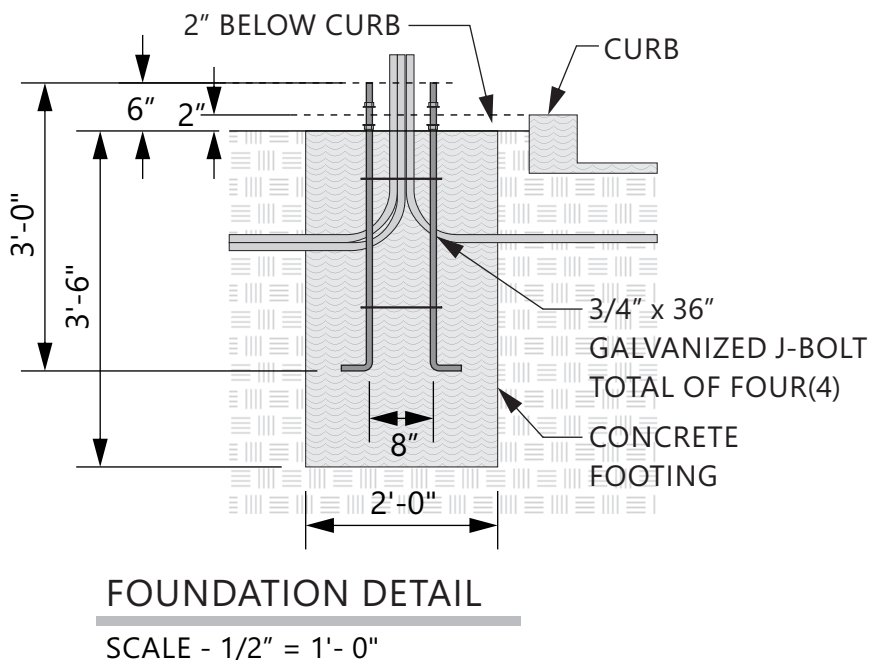
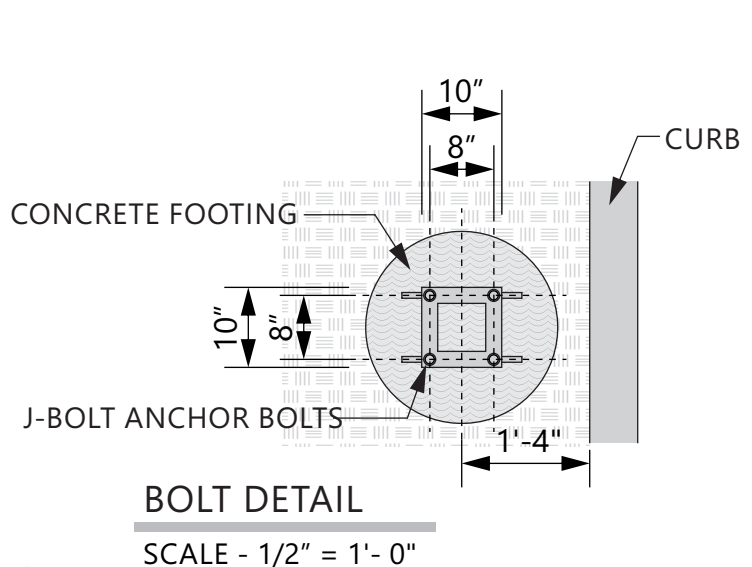
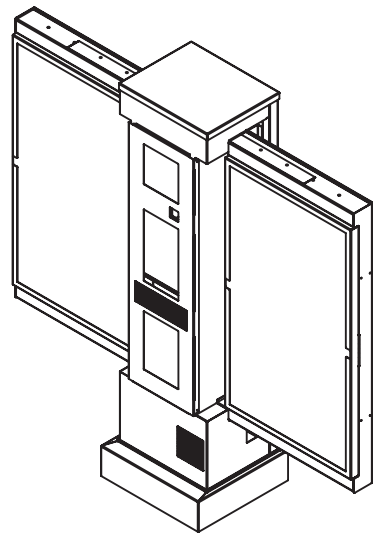
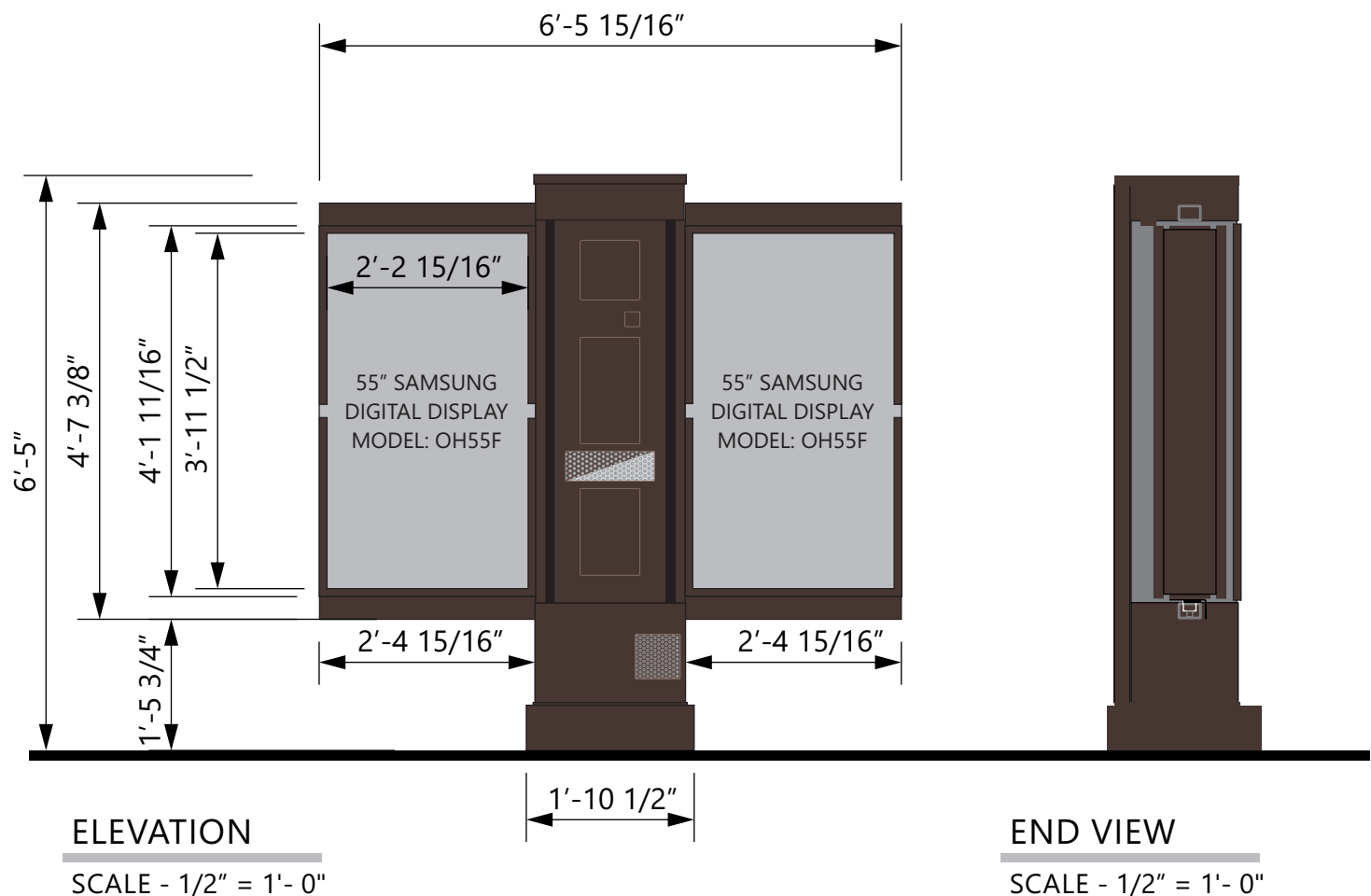
Sign Type H1/H2 Chick-fil-A

SPECIFICATIONS

PIVOTING ALUMINUM CONSTRUCTION CABINETS
WITH DIGITAL DISPLAY BOARDS WITH STATIC IMAGES



DARK BRONZE



SIGN PACKAGE

SPECIFICATIONS

SIGN PANELS

SIGNS PANELS
PANELS ARE .080" ALUMINUM. BACKS TO BE PAINTED TO MATCH POSTS.
POSTS ARE 2" x 2" SQUARE ALUMINUM TUBING CAPPED ON TOP



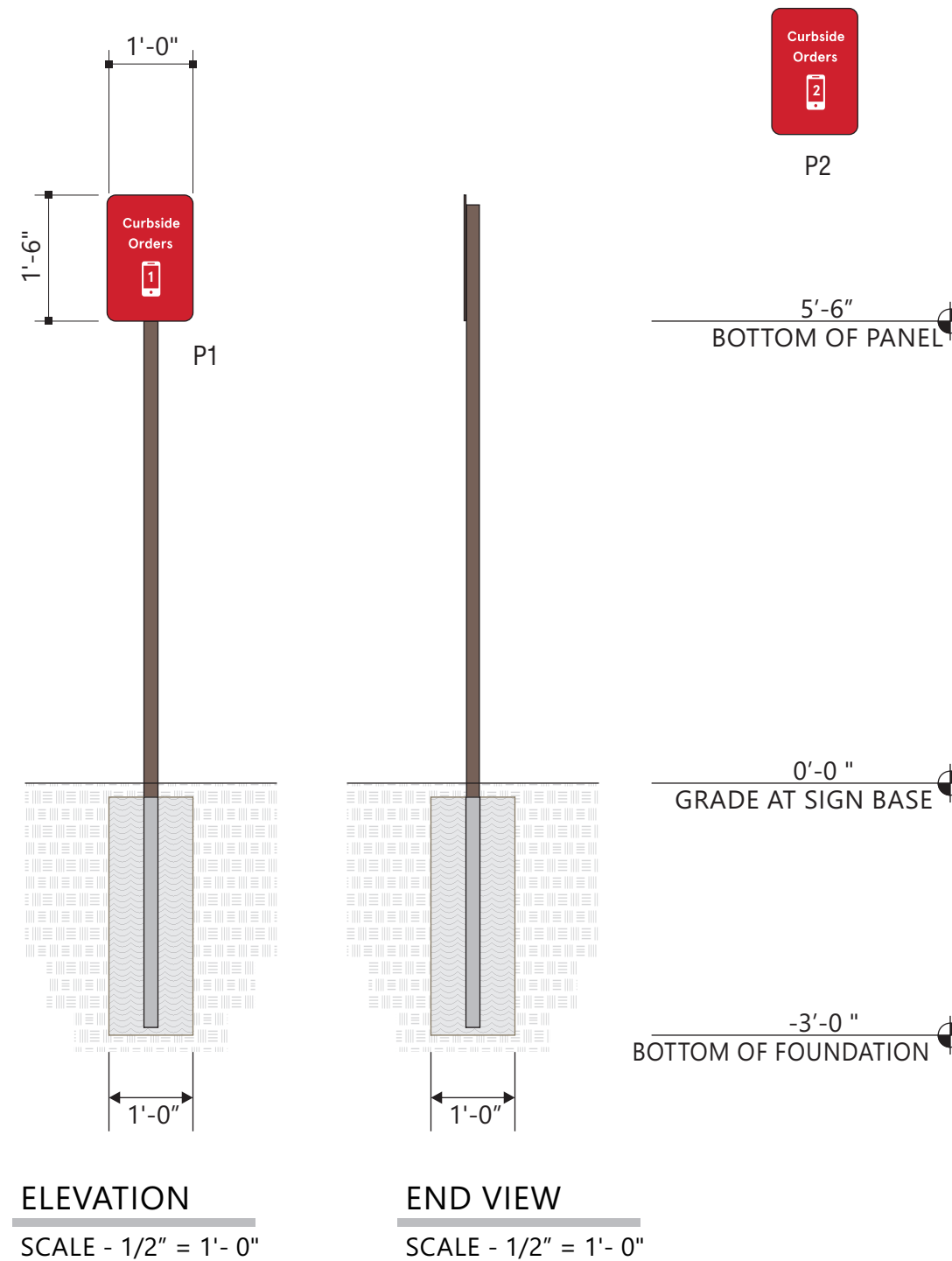
SIGN PANEL
3M #680-82 REFLECTIVE RED.



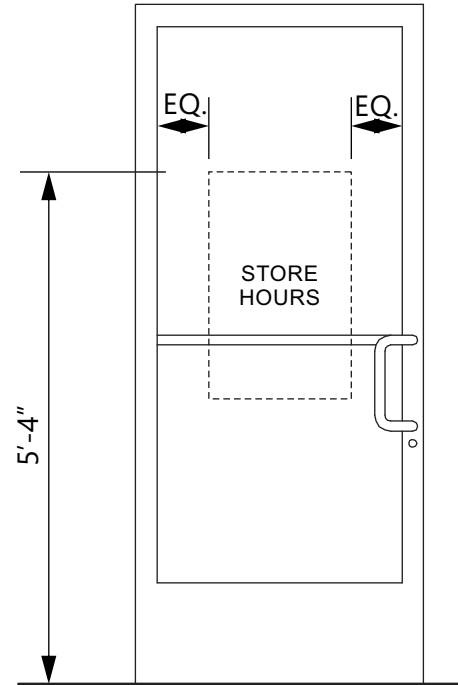
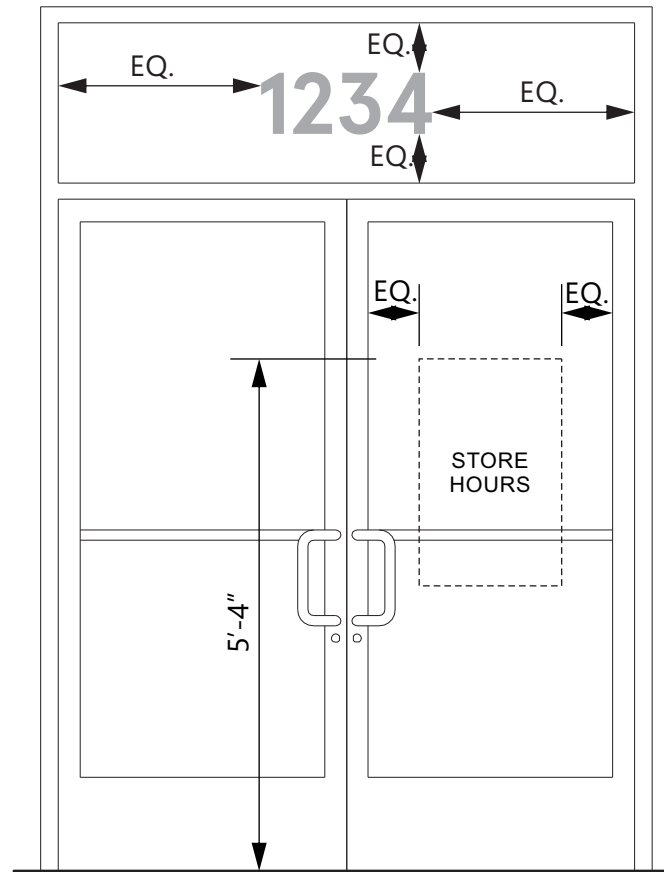
SIGN PANEL
3M #680-10 REFLECTIVE WHITE



BACK OF SIGN PANEL AND POST
MATTHEWS #74155 DARK BRONZE



Window Signs Chick-fil-A



8" **1234**

8" TALL ADDRESS NUMBERS ARE 3M #7725-10 OPAQUE WHITE VINYL FILM APPLIED TO EXTERIOR SURFACE OF GLASS. (SHOWN IN GREY FOR ILLUSTRATION) APERCU BOLD FONT

LETTERING IS 3M #7725-10 OPAQUE WHITE VINYL FILM (SHOWN IN GREY FOR ILLUSTRATION) CREDIT CARD LOGOS ARE INDIVIDUAL PRINTED DECALS ON CLEAR FILM. ALL GRAPHICS ARE APPLIED TO EXTERIOR SURFACE OF GLASS. STORE HOURS MAY BE DIFFERENT PER STORE. SUNDAY HAS RED VINYL FILM STRIKE THROUGH ON IT. **PROVIDE EXTRA 6:00 PER EACH SET.**

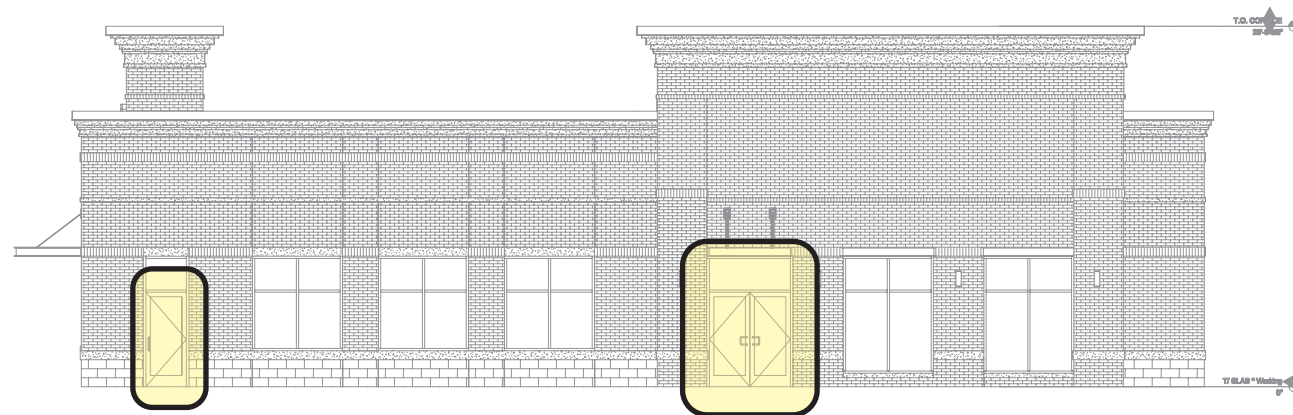
VERIFY ADDRESS BEFORE MAKING NUMBERS

ELEVATION
NOT TO SCALE

ELEVATION
SCALE - 1/2" = 1'- 0"

ELEVATION
SCALE - 1/2" = 1'- 0"

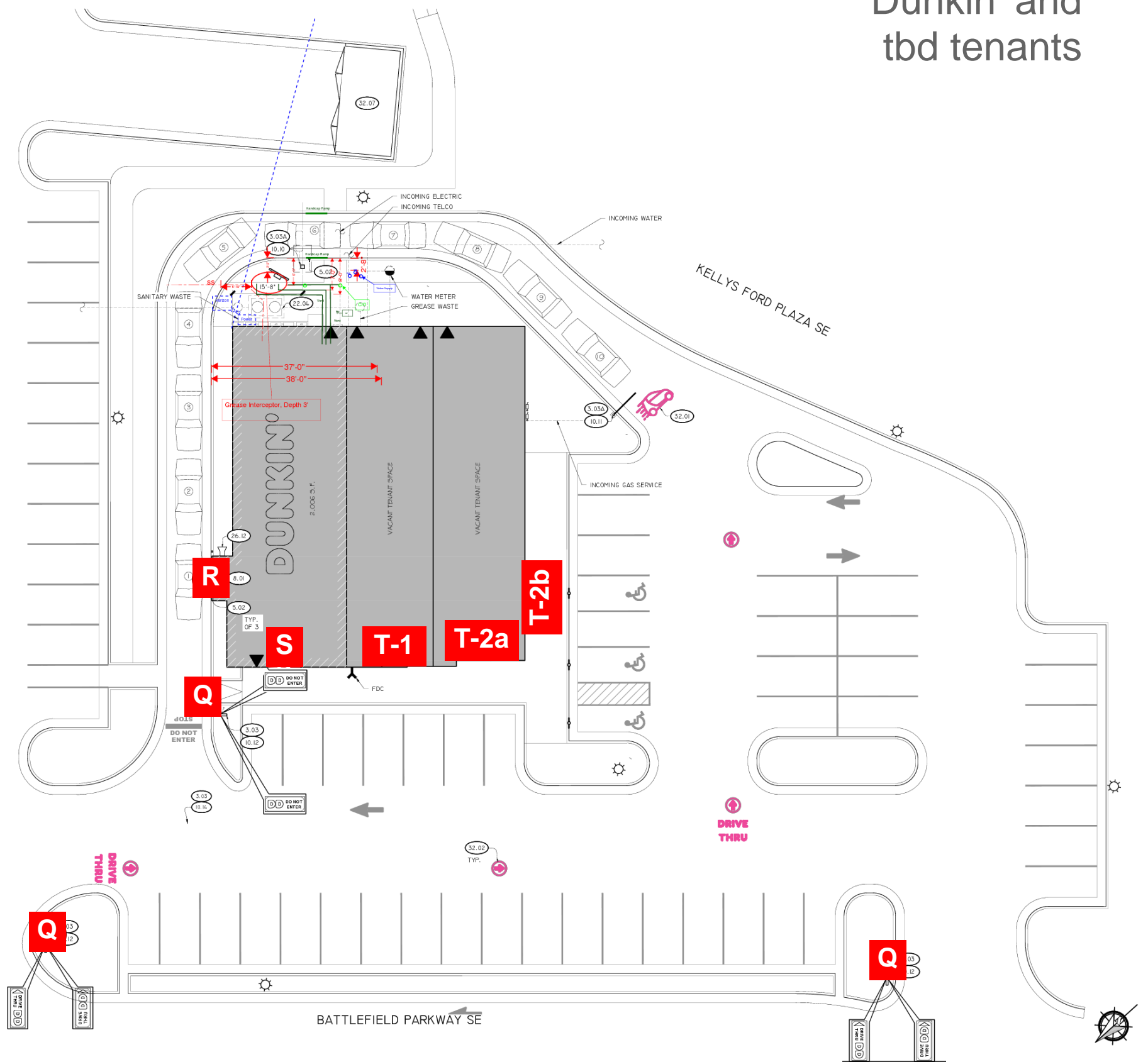
ELEVATION
SCALE - 1 1/2" = 1'- 0"



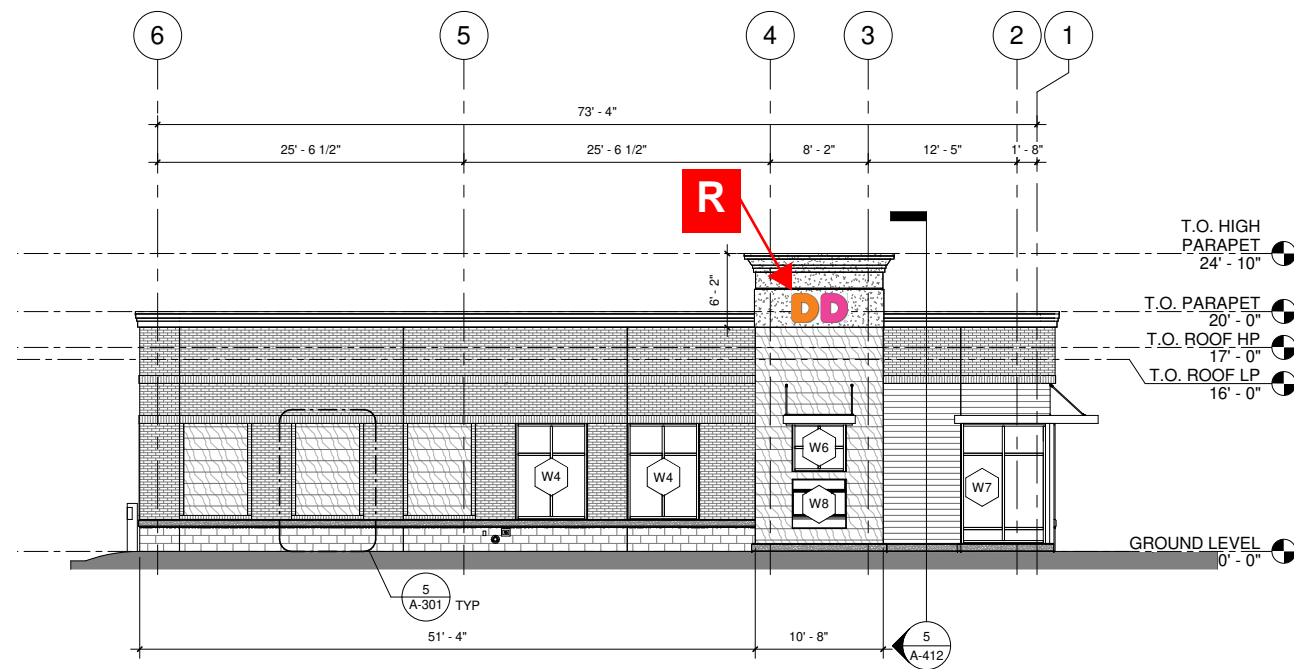
Site Plan Dunkin' and tbd tenants

Sign Schedule

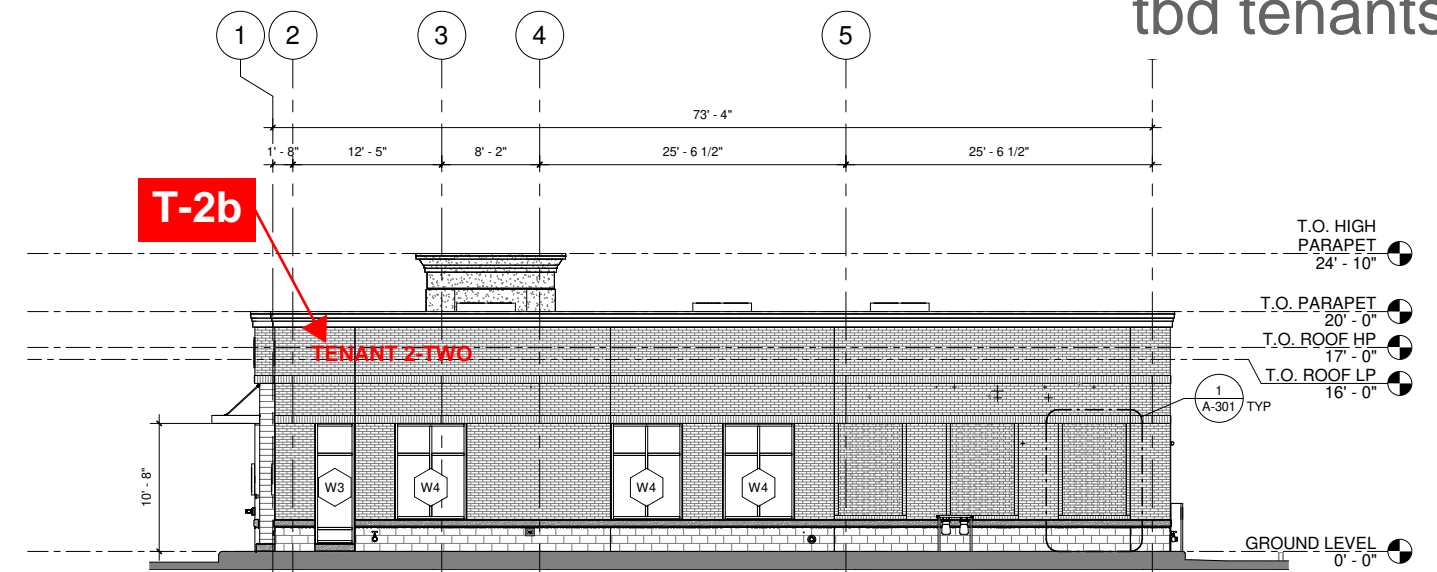
Item	Description	Tenant	Quantity	Sign Area	Allowed	Ref Pg
A	Main ID Sign	CFA	1	40	40	4
B	Wall Sign - 5' script	CFA	1	58.75	84.5	5
CB	Clearance Bar	CFA	2			6
D	Wall Sign - 5' script	CFA	1	58.75	72.75	5
E	Wall Sign - 5' script	CFA	1	58.75	84.5	5
FP	Flag Pole - 50'	CFA	1			7
G	** not used **	CFA				
H1	Menu Board - Lane 1	CFA	1			8
H2	Menu Board - Lane 2	CFA	1			8
I through N	** not used **					
P1/P2	DOT Curbside Orders	CFA	2			9
Q	42"H Directional Sign	DD	2			13
R	Wall Sign - 36"h letters	DD	1	17.35	73.33	14
S	Wall Sign - 18"h letters	DD	1	12.75	27.5	15
T-1	Wall Sign - 18"h letters	tbd	1	19.33	19.33	16
T-2a	Wall Sign - 18"h letters	tbd	1	20.5	20.5	16
T-2b	Wall Sign - 18"h letters	tbd	1	20.5	73.33	16
U through Z	** not used **					
	CFA = Chick-Fil-A					
	DD = Dunkin'					
	tbd = to be determined					



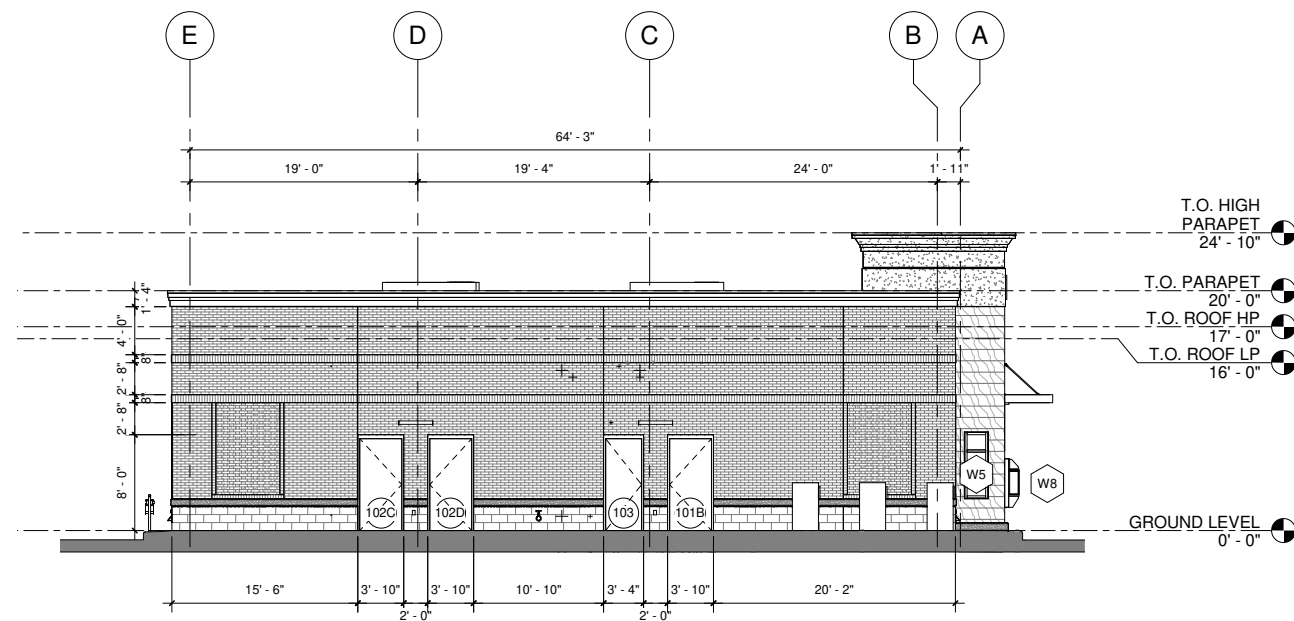
Elevations Dunkin' and tbd tenants



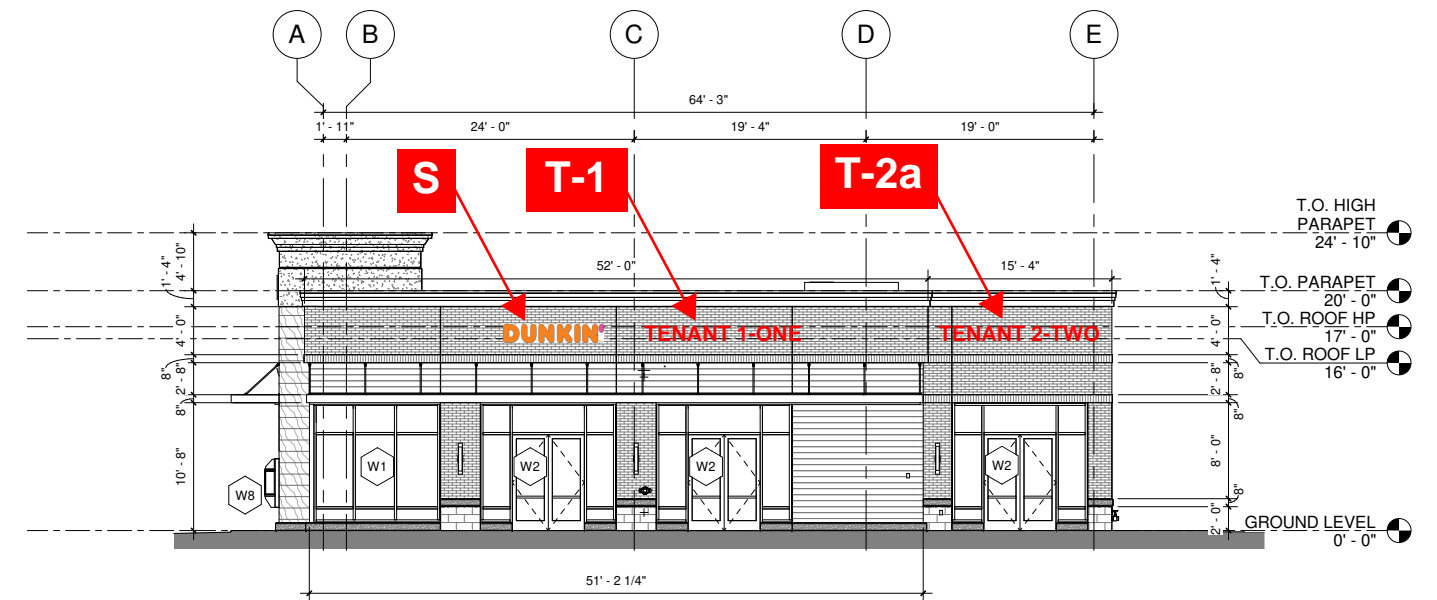
4 EAST ELEVATION



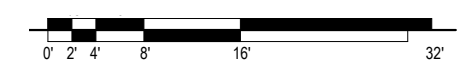
2 WEST ELEVATION



3 SOUTH ELEVATION

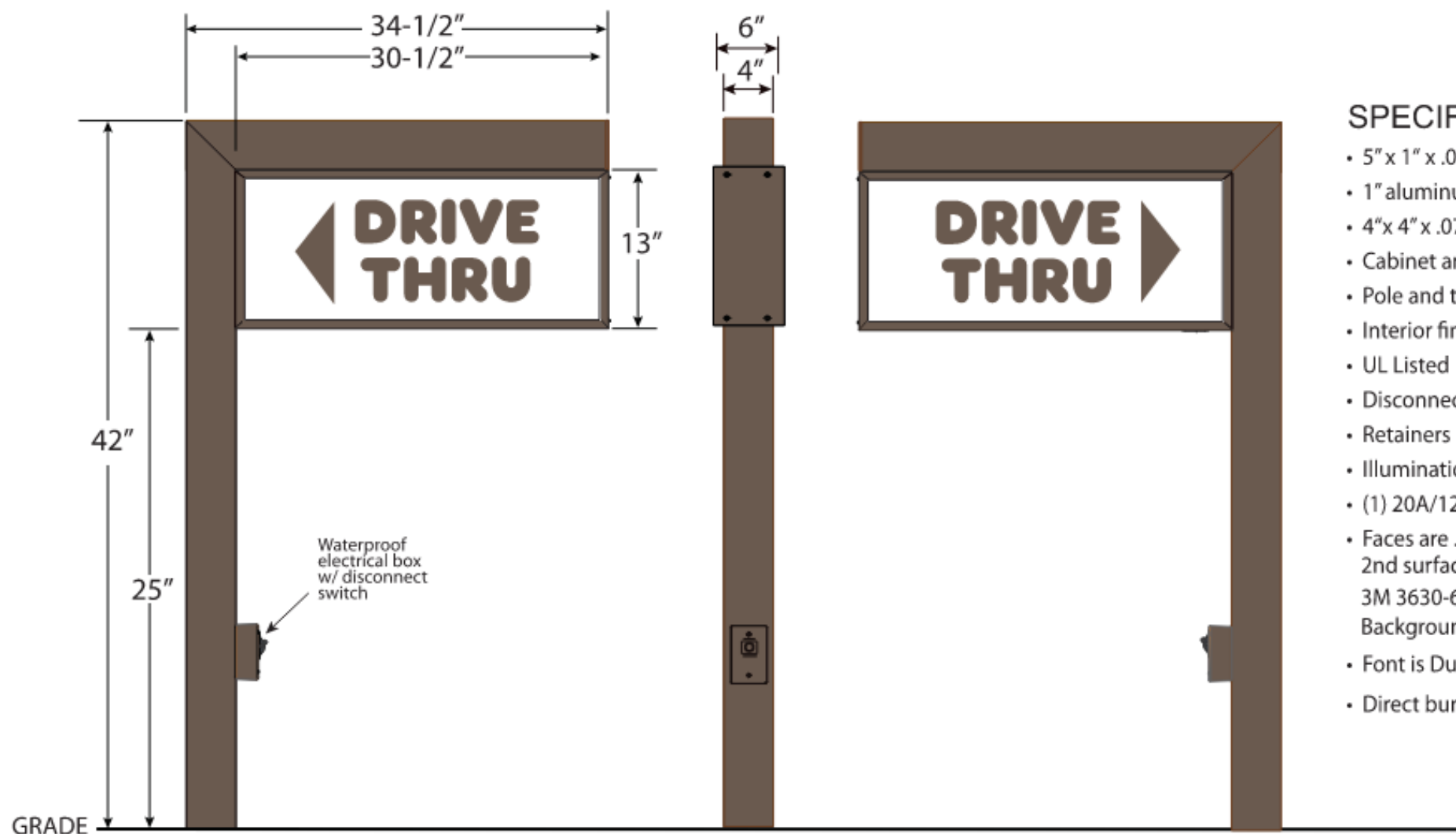


1 NORTH ELEVATION



SIGN PACKAGE

Sign Type Q Dunkin'

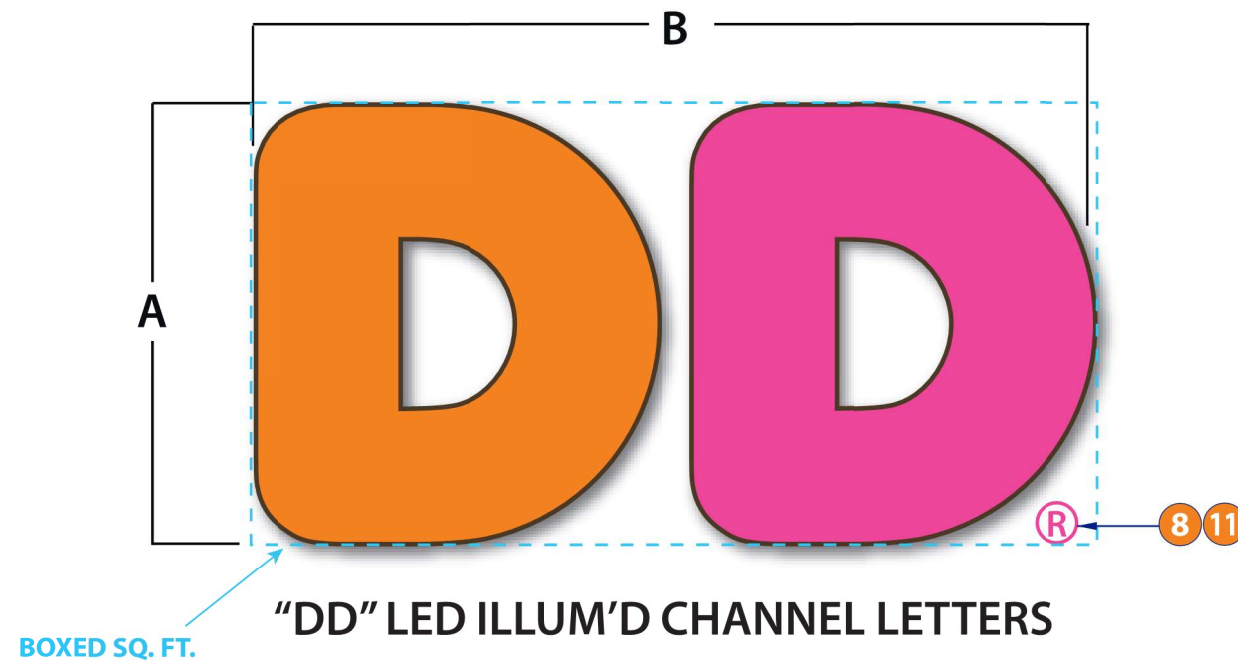


SPECIFICATIONS:

- 5" x 1" x .063" aluminum extrusion frame
- 1" aluminum face retainer
- 4" x 4" x .075" square tube support
- Cabinet and retainer painted Dark Bronze
- Pole and top trim piece ptd. Dark Bronze
- Interior finish to be reflective white
- UL Listed
- Disconnect switch located on pole at electrical box
- Retainers removeable for service access
- Illumination to be white LEDs
- (1) 20A/120V circuit
- Faces are .118 flat clear solar grade polycarbonate w/ 2nd surface decoration:
3M 3630-69 Duranodic Bronze vinyl
Background is 403 translucent white back-spray
- Font is Dunkin Sans Display
- Direct bury installation

FACE OPTIONS

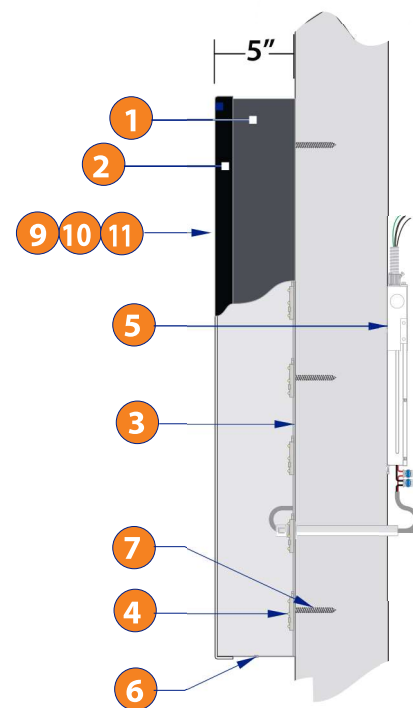




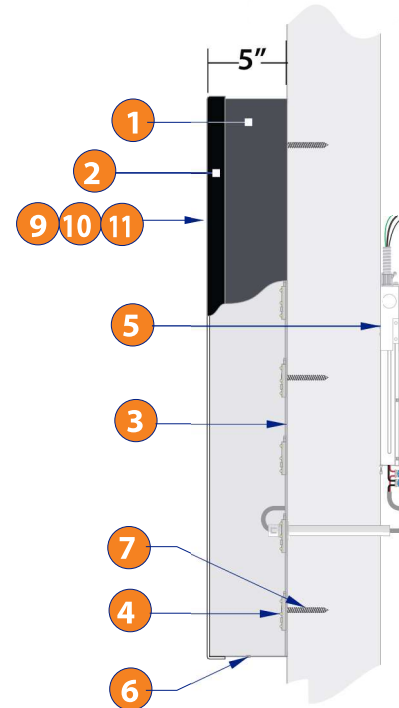
CHANNEL LETTER SPECIFICATIONS	
NO.	DESCRIPTION
1	.050 x 5"D ALUM. RETURNS PAINTED PMS 7540C DARK GRAY
2	1" TRIMCAP TO BE #313 BRONZE
3	.063 ALUMINUM BACKS
4	WHITE LED ILLUMINATION AS REQUIRED
5	REMOTE POWER SUPPLIES AS REQUIRED
6	WEEP HOLES AS REQUIRED
7	MOUNTING HARDWARE AS DETERMINED BY SITE CONDITIONS
8	.063 ALUMINUM DISK PTD. WHITE (REGISTER 'R')
9	3/16" #2447 WHITE ACRYLIC FACES
10	3M 3630-3123 ORANGE TRANSLUCENT VINYL (1ST SURFACE)
11	3M 3630-1379 MAGENTA TRANSLUCENT VINYL (1ST SURFACE)

NOTES:

- Letter interiors painted reflective white
- U.L. listed
- LED's to be populated for even and consistent lighting without hot spots or shadows
- Font is Dunkin Sans Display

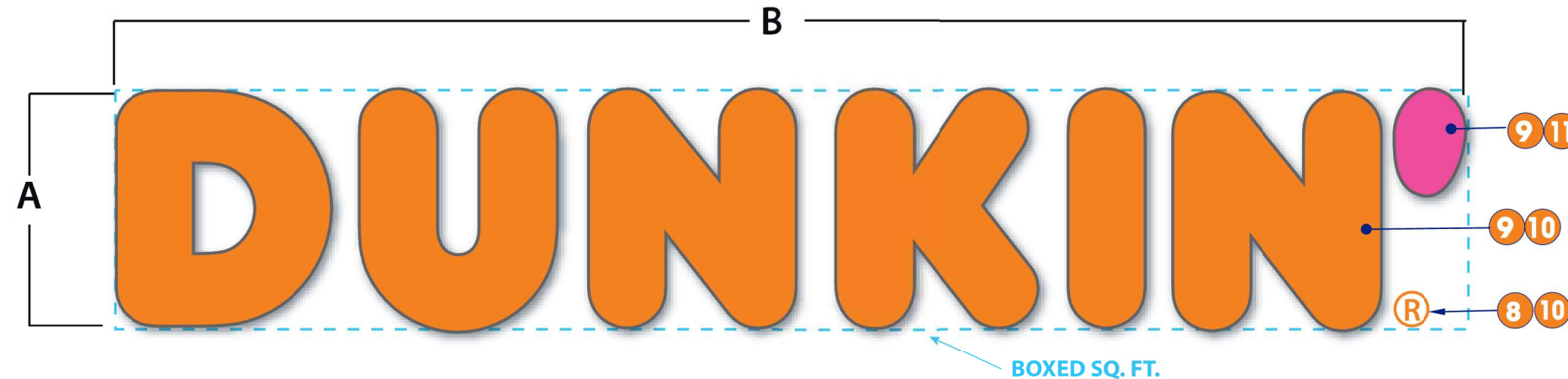


ORANGE "D" LETTER SECTION
SCALE: NTS

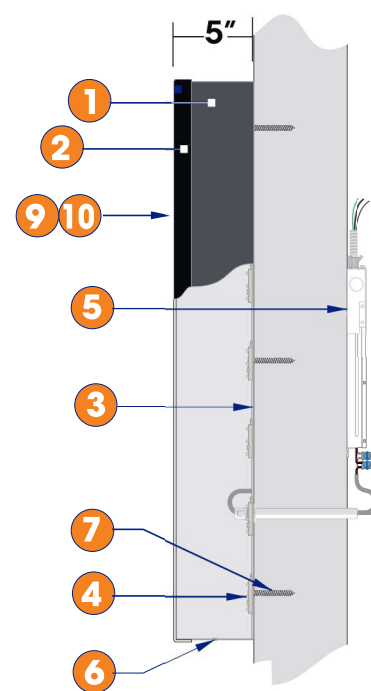


MAGENTA "D" LETTER SECTION
SCALE: NTS

"DD" CHANNEL LETTER STANDARD SIZES				
DISPLAY HEIGHT	DISPLAY LENGTH	ELECTRICAL	BOXED SQUARE FOOTAGE	ACTUAL SQUARE FOOTAGE
A	B			
36"	69-3/8"	(1) 20 AMP/120 VOLT CIRCUIT	17.35	13.70
45"	86-3/4"	(1) 20 AMP/120 VOLT CIRCUIT	27.11	21.41
54"	104-1/8"	(1) 20 AMP/120 VOLT CIRCUIT	39.04	30.83

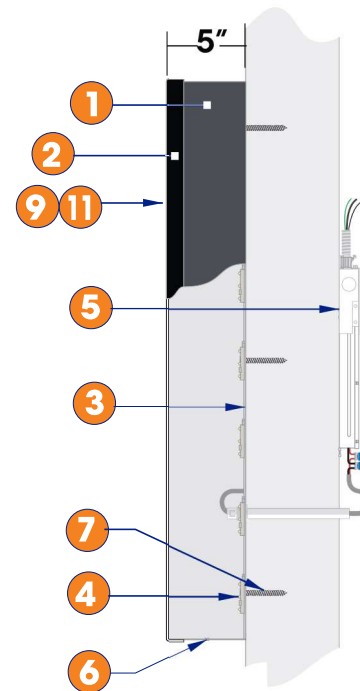


DUNKIN' LED ILLUM'D CHANNEL LETTERS



ORANGE DUNKIN' LETTER SECTION

SCALE: NTS



MAGENTA APOSTROPHE SECTION

SCALE: NTS

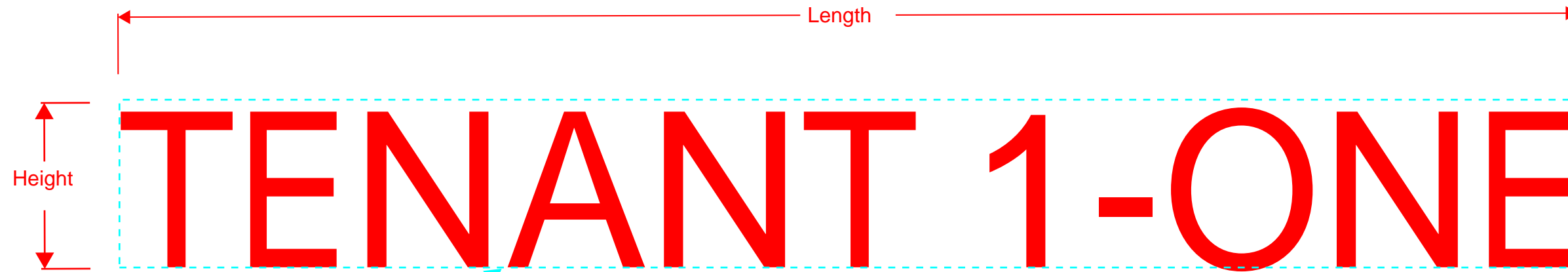
CHANNEL LETTER SPECIFICATIONS	
NO.	DESCRIPTION
1	.050 x 5"D ALUM. RETURNS PAINTED PMS 7540C DARK GRAY
2	1" TRIMCAP TO BE #313 BRONZE
3	.063 ALUMINUM BACKS
4	WHITE LED ILLUMINATION AS REQUIRED
5	REMOTE POWER SUPPLIES AS REQUIRED
6	WEEP HOLES AS REQUIRED
7	MOUNTING HARDWARE AS DETERMINED BY SITE CONDITIONS
8	.063 ALUMINUM DISK PTD. WHITE (REGISTER 'R')
9	3/16" #2447 WHITE ACRYLIC FACES
10	3M 3630-3123 ORANGE TRANSLUCENT VINYL (1ST SURFACE)
11	3M 3630-1379 MAGENTA TRANSLUCENT VINYL (1ST SURFACE)

NOTES:

- Letter interiors painted reflective white
- U.L. listed
- LED's to be populated for even and consistent lighting without hot spots or shadows
- Font is Dunkin Sans Display

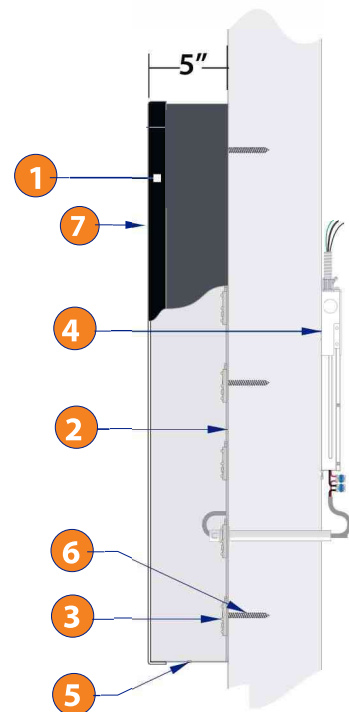
DUNKIN' CHANNEL LETTER STANDARD SIZES				
DISPLAY HEIGHT	DISPLAY LENGTH	ELECTRICAL	BOXED SQUARE FOOTAGE	ACTUAL SQUARE FOOTAGE
A	B			
18"	102"	(1) 20 AMP/120 VOLT CIRCUIT	12.75	9.31
24"	136"	(1) 20 AMP/120 VOLT CIRCUIT	22.67	16.56
30"	170"	(1) 20 AMP/120 VOLT CIRCUIT	35.42	25.87

Sign Type T-1; T-2a; T-2b
tbd tenant



BOXED SQ. FT.

Sign		Height	Length	Max Area sf
T-1	Tenant 1	1'-6"	12'-10"	19.33
T-2a	Tenant 2	1'-6"	13'-8"	20.5
T-2b	Tenant 2	1'-6"	13'-8"	20.5



Typical Sign
Letter Section

Tenant Signs	
Channel Letter Specifications	
1	1" Trimcap to be black or bronze
2	.063 Aluminum Backs
3	White LED Illumination
4	Remote power supply as required
5	Weep holes as required
6	Mounting hardware as determined by site conditions
7	3/16" acrylic faces COLOR: tbd
Letter interiors to be painted reflective white.	
U.L. Listed	
LED lights populated for even and consistent lighting without hot spots or shadows.	
Font: to be determined	
Text: to be determined	
Color: to be determined	