

# Evergreen Mill Road Widening Project

## Second Neighborhood Meeting March 10, 2022 at 7 PM

---

- We will be starting soon.
- You were muted as you entered.
- The attendee list will NOT be visible to other attendees.
- Text or call (571) 420-1036 for help w/ technical issues or email [sbiggs@leesburgva.gov](mailto:sbiggs@leesburgva.gov)

# Evergreen Mill Road Widening Project

---

2nd Neighborhood Meeting: March 10, 2022 at 7 PM

Presented by:

Karin Franklin, Town of Leesburg

Christi Fragale, WSP

This presentation will be recorded and posted on the Evergreen Mill Rd Project Webpage for the duration of the project.

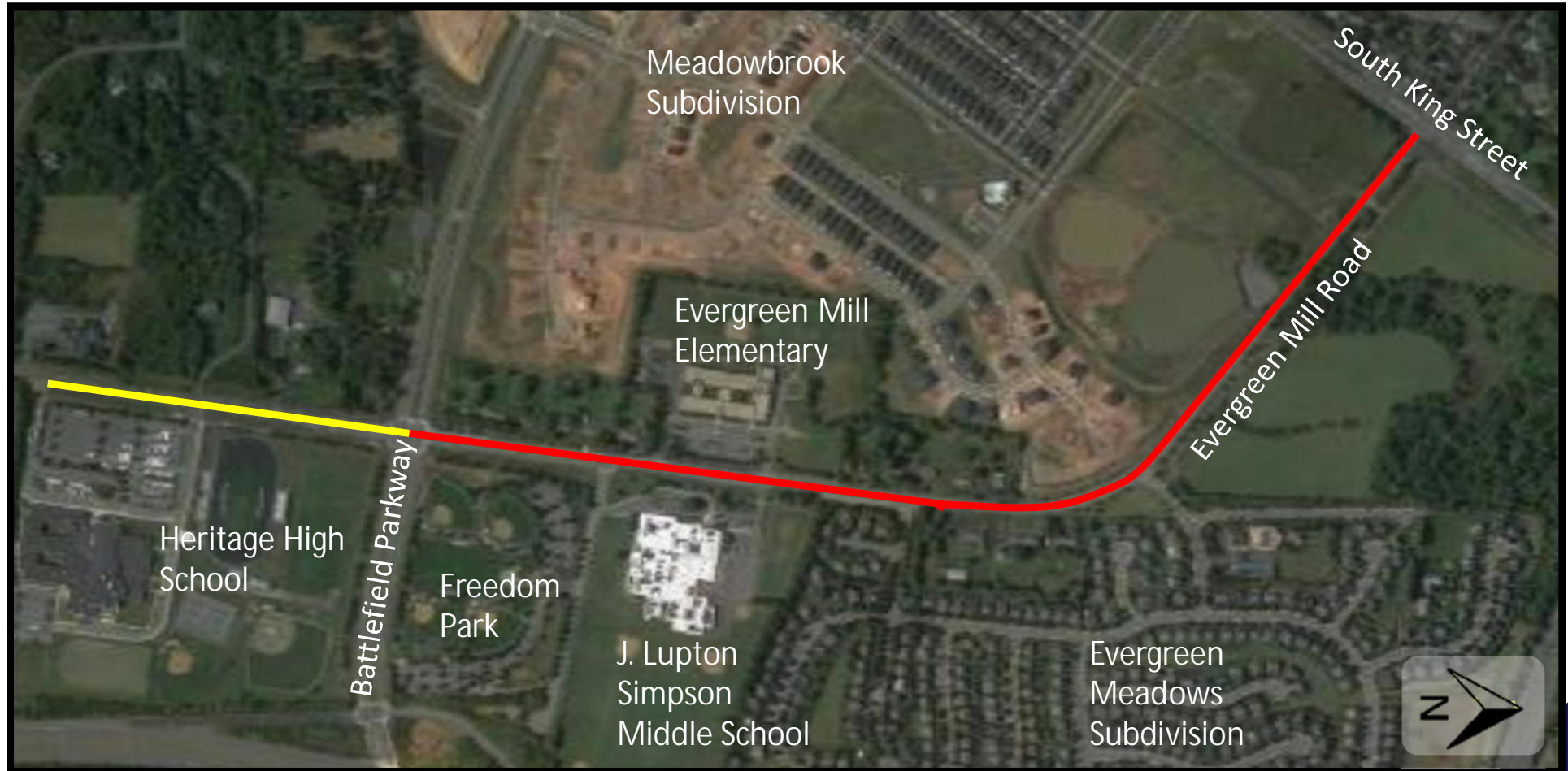
[www.leesburgva.gov/evergreenmill](http://www.leesburgva.gov/evergreenmill)



# Meeting Topics

- ▶ Background
- ▶ Review Input received from April 2021 Neighborhood meeting
- ▶ Present 60% Plan Design and Updates
- ▶ Next Steps
- ▶ Resident Comments and Questions

# Project: Widen Evergreen Mill Road from Two Lanes to Four Lanes



-  Original Project – Approximately 1 mile
-  Project Extension - 0.3 mile

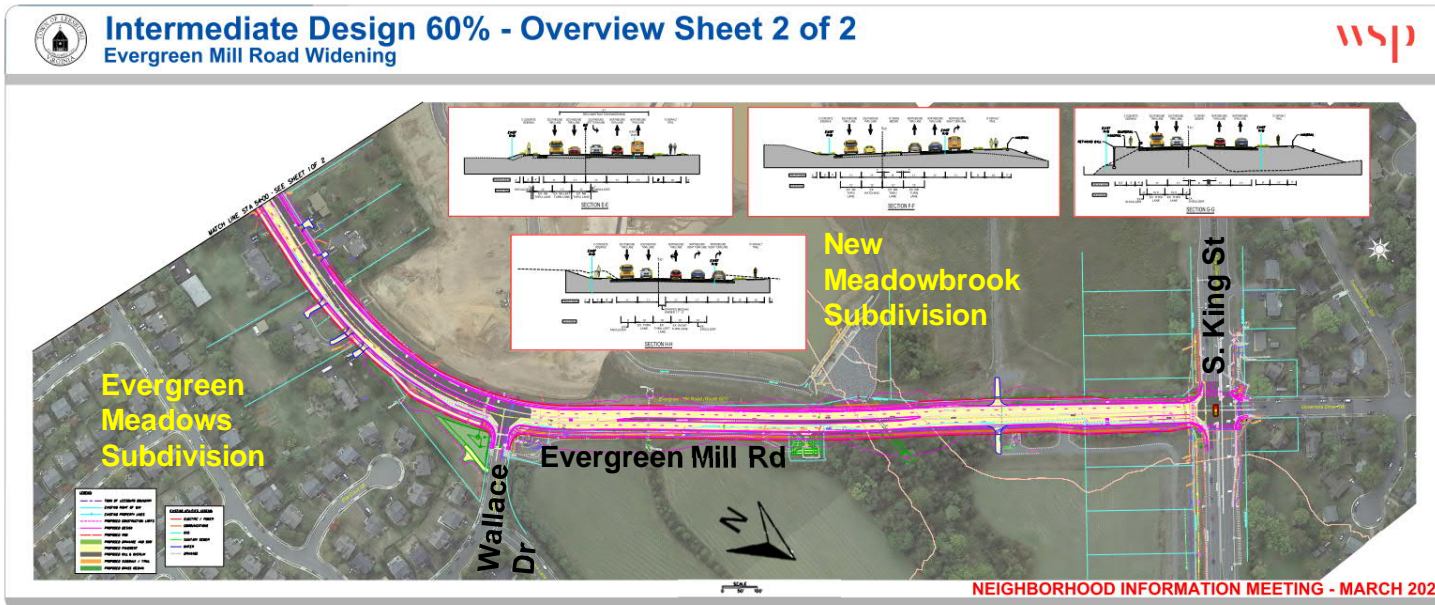
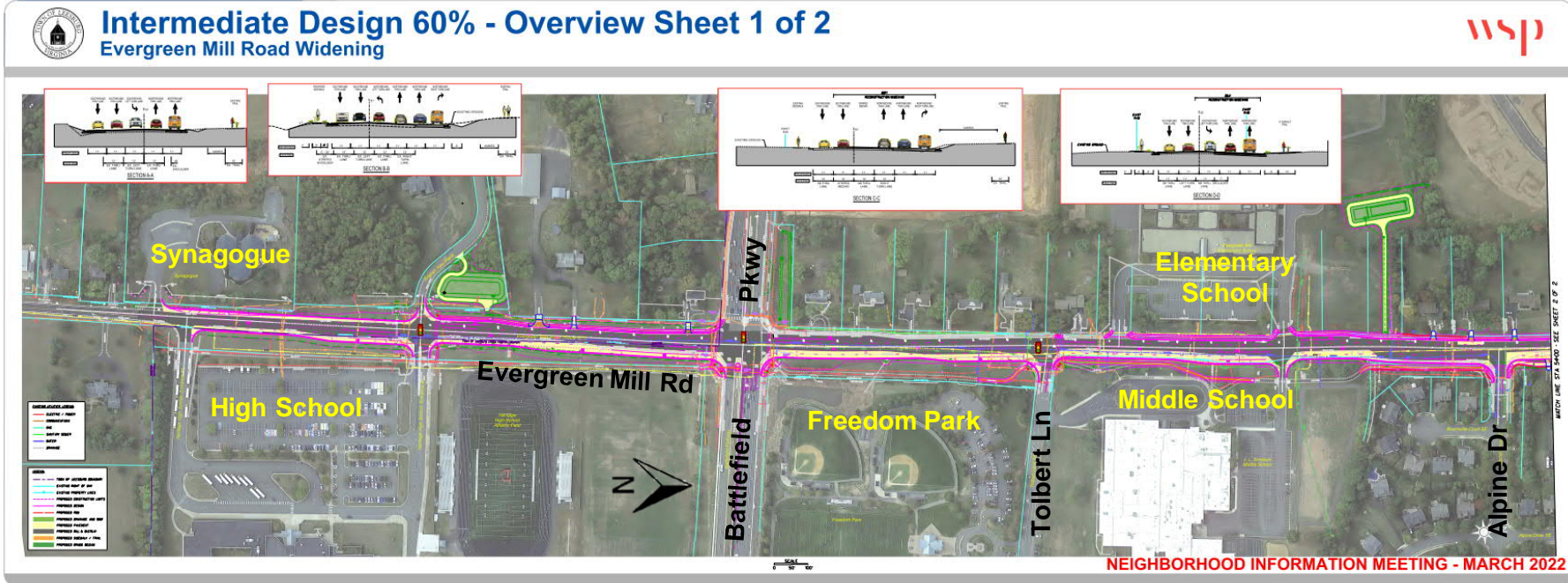
# Project Goals:

- ▶ Improve traffic flow on Evergreen Mill Road
- ▶ Reduce congestion at high school entrance
- ▶ Improve safety at the intersection with Battlefield Parkway
- ▶ Improve pedestrian and bicycle connectivity and safety

# 2021 Neighborhood Meeting - Questions/Concerns

- ▶ Concerns about safety and speeding
- ▶ Questions regarding property impacts
- ▶ Desire for safe pedestrian connectivity
  - ◆ Suggestion for a new crosswalk
- ▶ Will new traffic lights be added?
- ▶ Can overhead utility lines be placed underground?

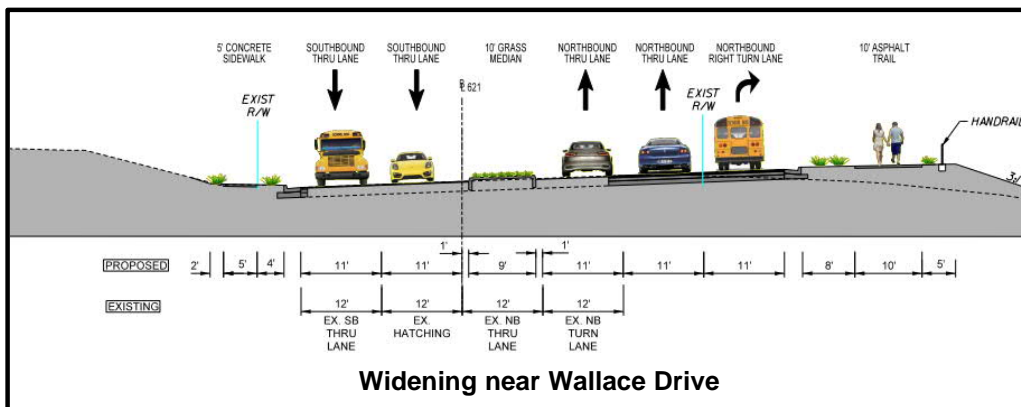
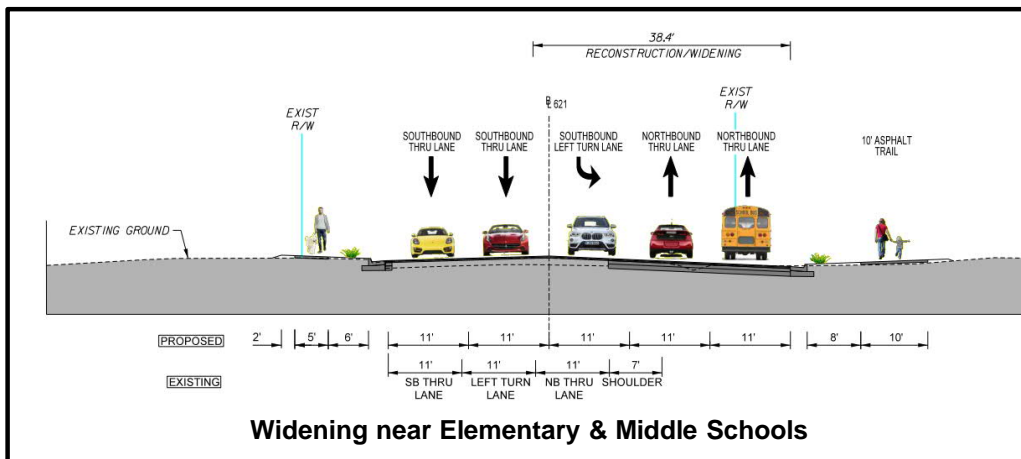
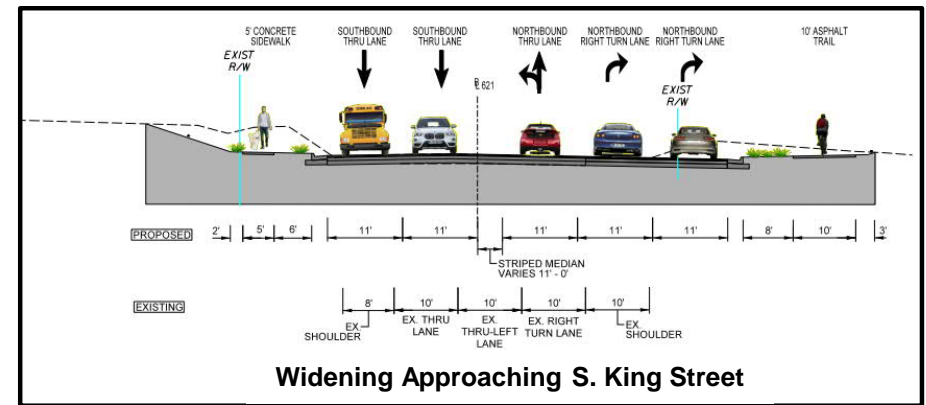
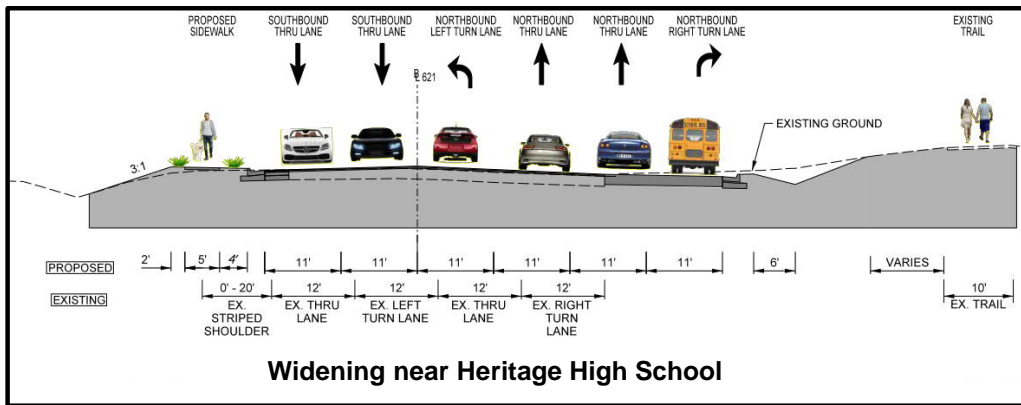
# Intermediate Design (60%) Overview



## DESIGN INCLUDES:

- ▶ Widening from 2 to 4 lanes
- ▶ Signal timing optimization
- ▶ Multimodal connectivity: trail on east side, sidewalk on west side. ADA upgrades.
- ▶ Curb and gutter
- ▶ Pavement reconstruction
- ▶ Stormwater mgmt including above and below ground facilities

# Reduce Project Footprint



Reduced from 12' to 11' wide lanes

- ▶ Reduces impacts to property owners
- ▶ Reduces environmental impacts & stormwater run-off
- ▶ Addresses concerns about safety & speeding
  - ◆ Acts as natural traffic calming
  - ◆ Fewer and less severe crashes
  - ◆ Shorter pedestrian crossings
- ▶ Collaborated with VDOT for approval
- ▶ Reduced width does not negatively impact vehicle operations or roadway capacity

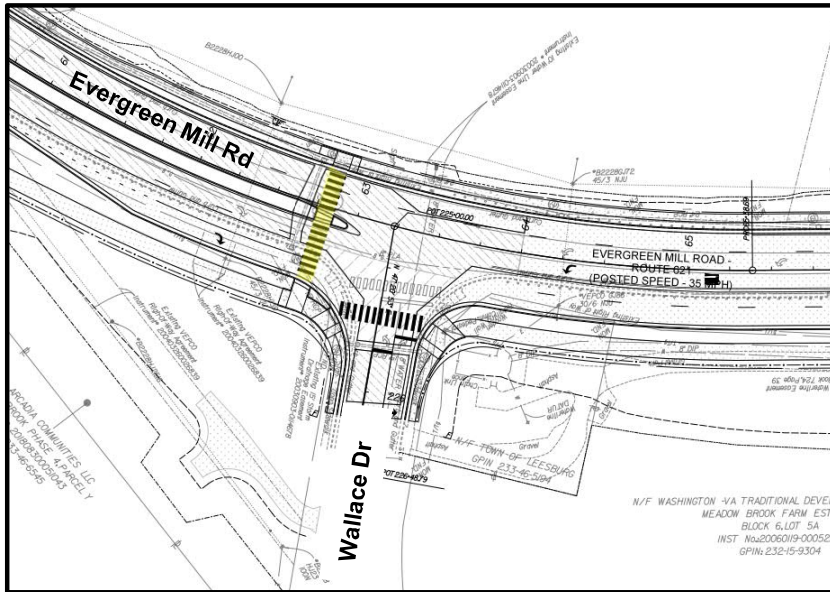
Reduced trail buffers in constrained areas

- ▶ 8' standard vs 6' proposed



# Signal and Crosswalk Considerations

## Add Crosswalk at Wallace Drive



Signal Warrants were performed at both Wallace Dr and Alpine Dr

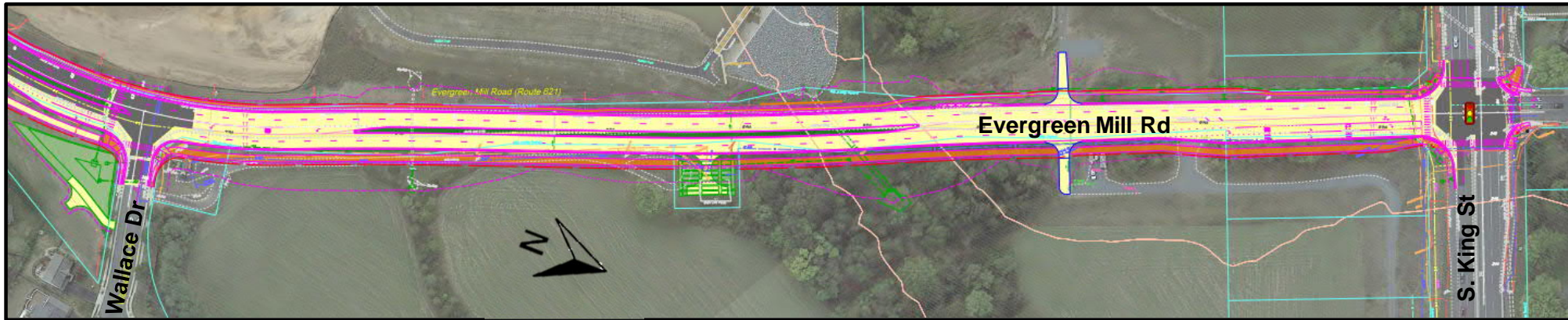
- ▶ Alpine: NOT warranted now, 2025 or 2045
- ▶ Wallace: Possibly warranted in 2045
- ▶ Signal will not be added at this time

Evaluated options for new crosswalk

- ▶ Project now includes a crosswalk at Wallace Dr
- ▶ Future traffic signal possible
- ▶ Provides raised median for pedestrian refuge
- ▶ Access considerations with raised median; fewer driveways nearby
- ▶ Stopping sight distance requirements are met (Design speed 40mph; 305' required)

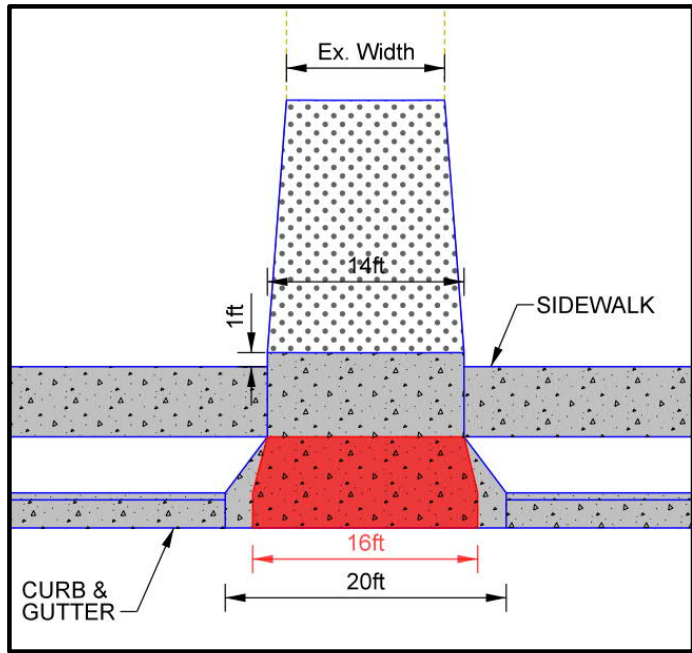
# Upgrade Substandard Pavement

Reconstruct, Overlay & Build-up Pavement



- ▶ Testing revealed areas of substandard pavement
- ▶ New pavement will have much longer design life
- ▶ Cost implications and construction schedule impacts

# Driveway Entrance Optimizations

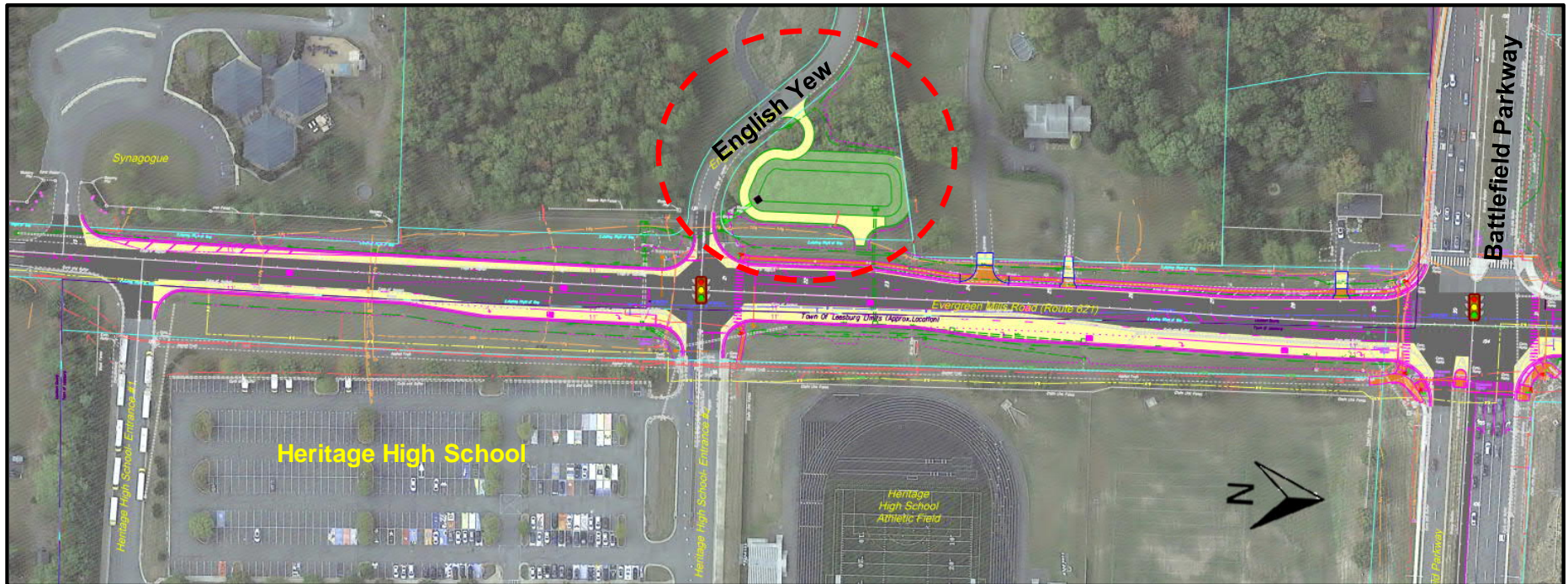


## Lessons Learned:

- ▶ Town standard is 16'-18' wide driveway apron
- ▶ Widen to 20' for easier access

# Stormwater Management Updates

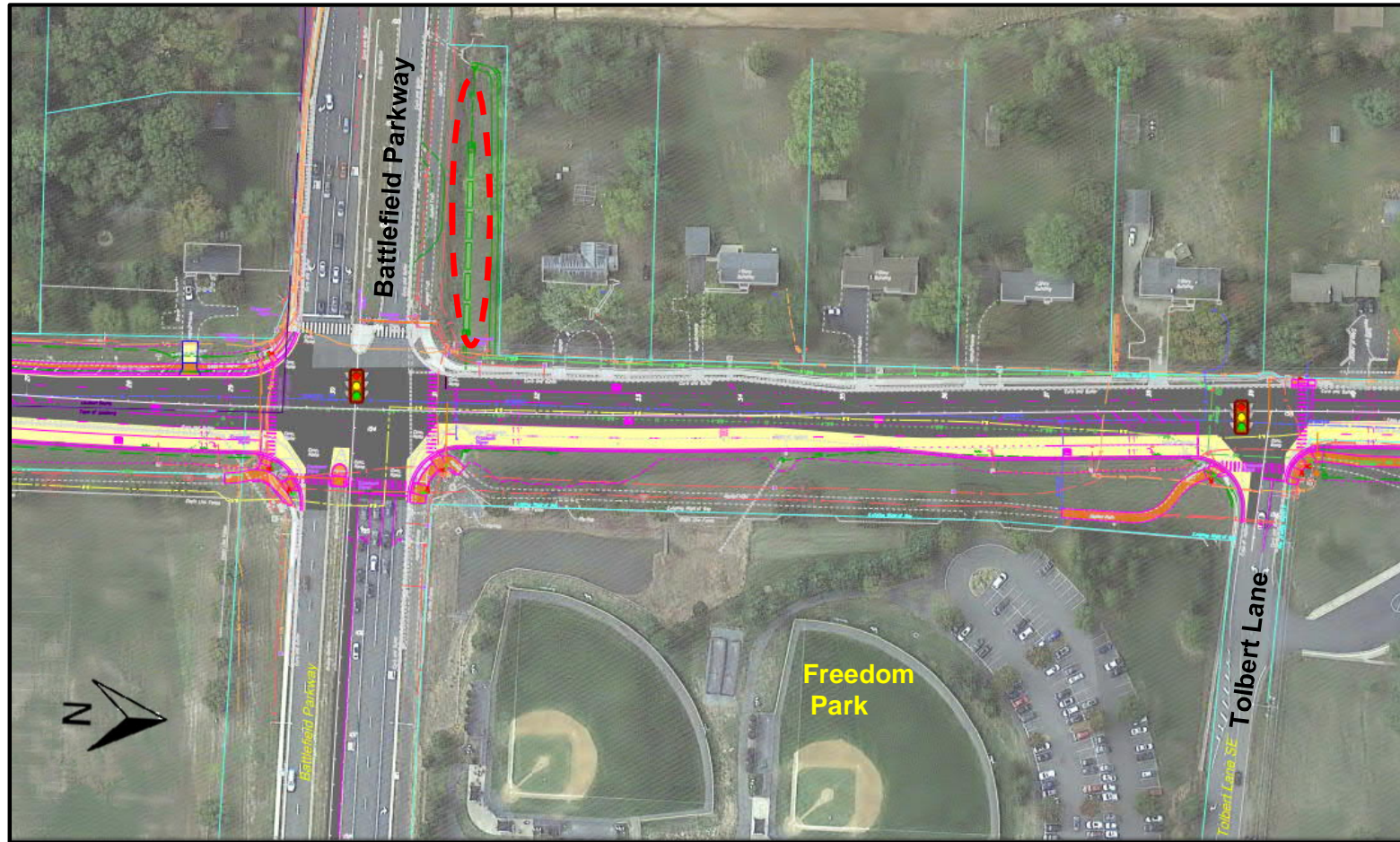
## SWM-1: English Yew Intersection



- ▶ Relocated farther back from Evergreen Mill Road
- ▶ Adjusted to avoid below and above ground utility impacts

# Stormwater Management Updates

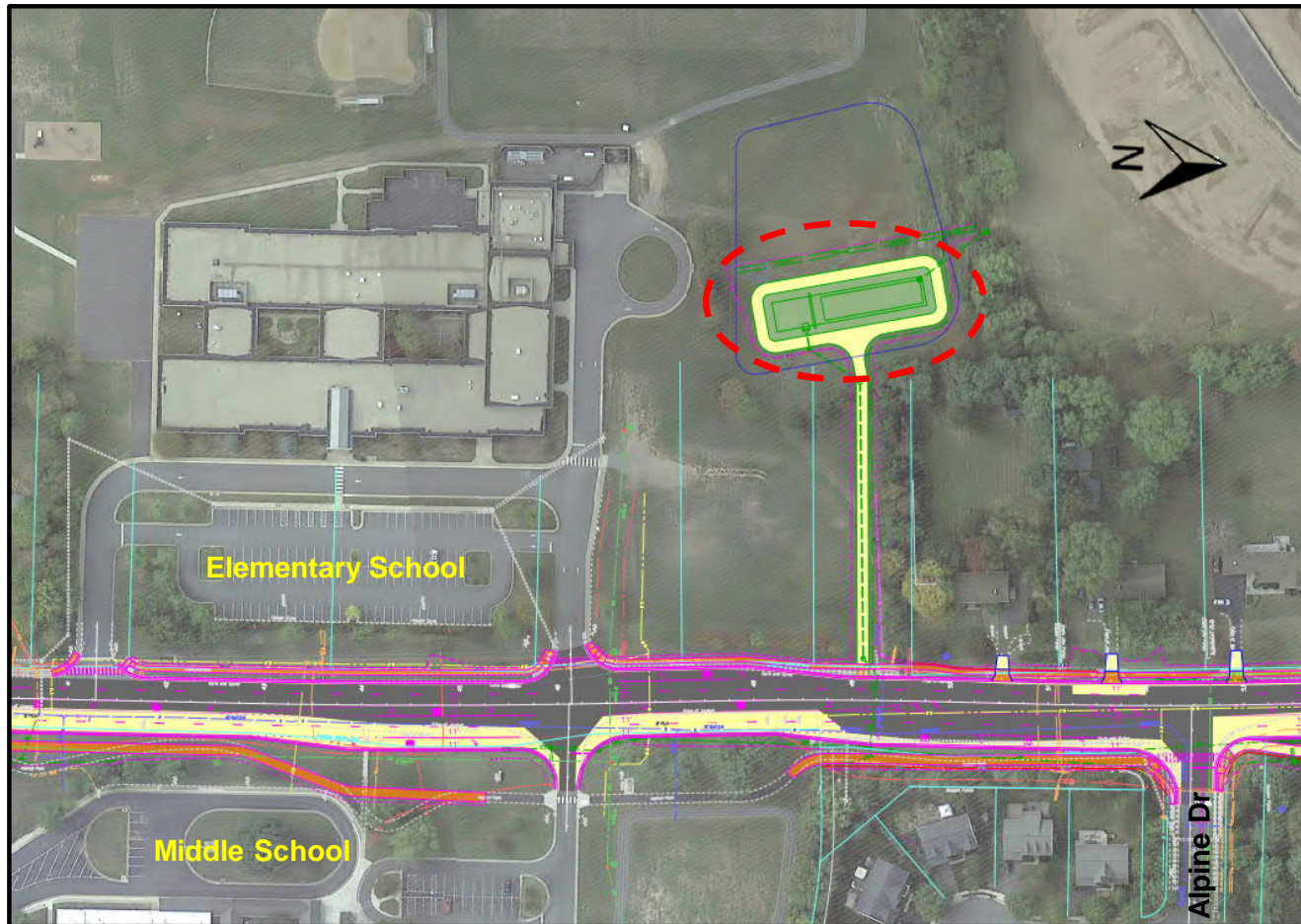
## SWM-2: Battlefield Parkway Intersection



- ▶ Converted from pond to below ground facility to reduce property impacts

# Stormwater Management Updates

## SWM-3: Evergreen Elementary School



- ▶ Retrofit existing elementary school pond rather than build a second pond on LCPS property

# Stormwater Management Updates

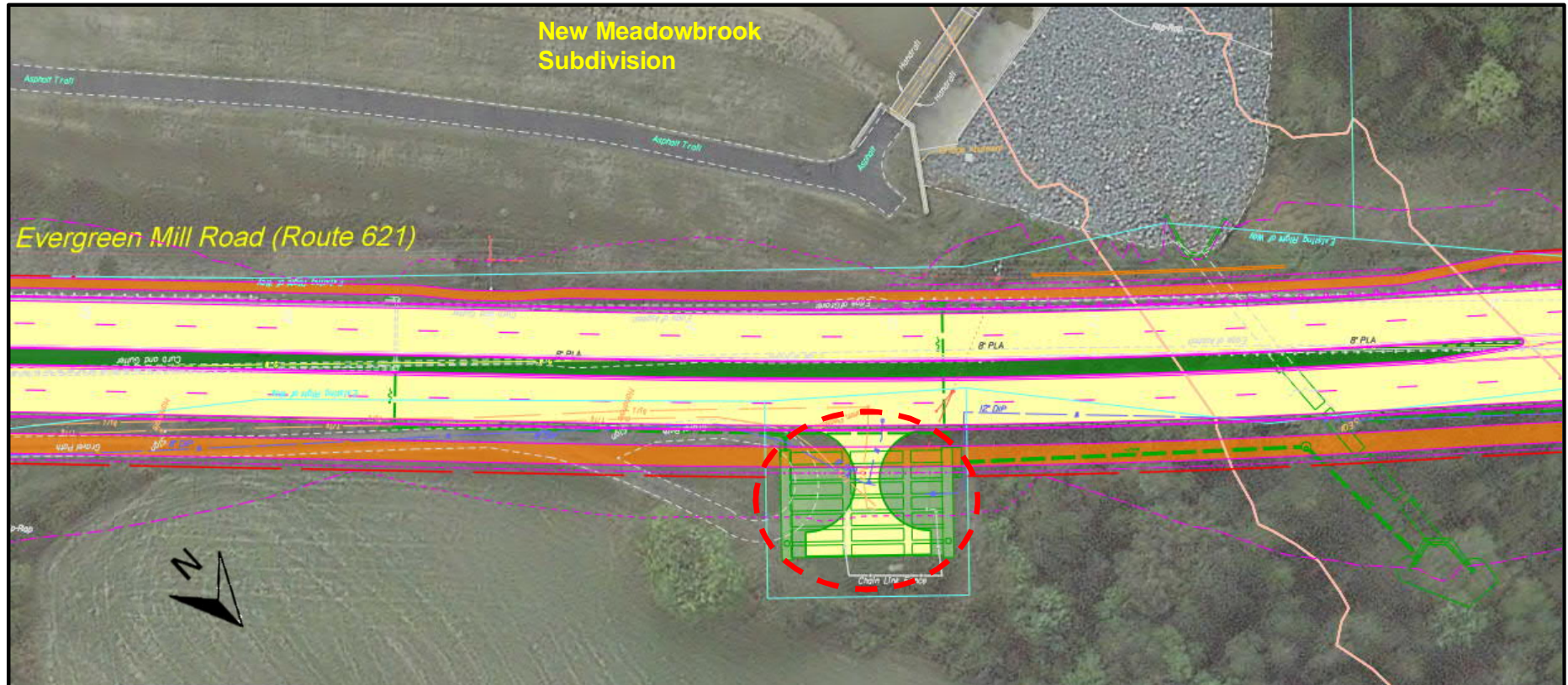
## SWM-4: Wallace Drive Intersection



- ▶ Design refined to reduce impacts to existing utility poles
- ▶ No significant changes

# Stormwater Management Updates

SWM-5



- ▶ Adjusted design approach to reduce size/depth of underground system near S. King Street
- ▶ Stay within existing Town parcel



# Undergrounding Utilities

- ▶ Relocating utilities into an underground duct bank could add \$10M+ to the project
- ▶ Undergrounding also requires modifications at the buildings
  - ◆ Cost paid by the property owner
- ▶ Not within the scope or budget for this project



# Summary of 60% Design Updates

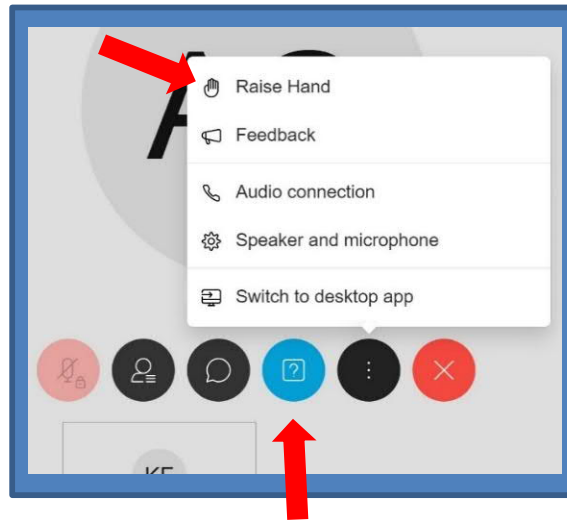
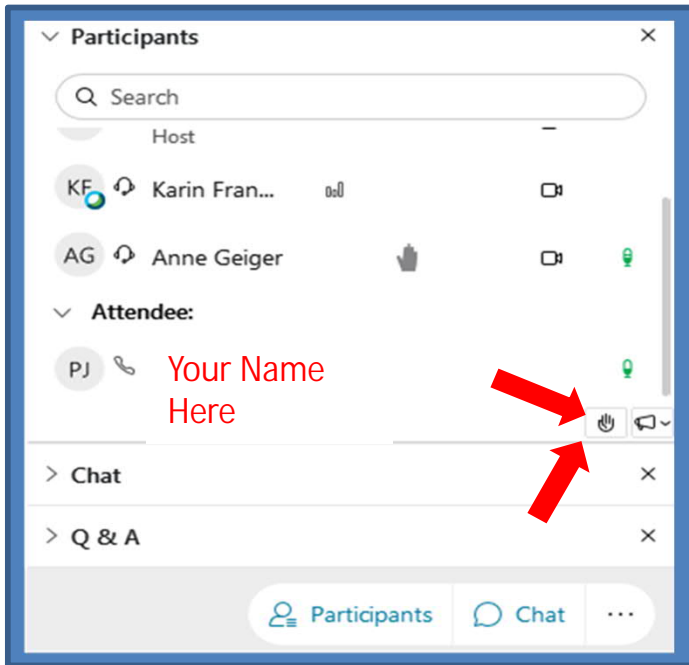
- Reduced project footprint
  - Lane width reduced from 12' to 11'
  - Trail Buffer reduced from 8' to 6' in some areas
  
- Improved Safety
  - Added new crosswalk at Wallace Drive
  - 11' lanes are expected to help reduce speed
  
- Modified driveway entrances to better match existing
  
- Upgraded substandard pavement
  
- Updated Stormwater Management Facilities
  
- Determined undergrounding of utilities is NOT supported by the project budget

# Project Completion Schedule

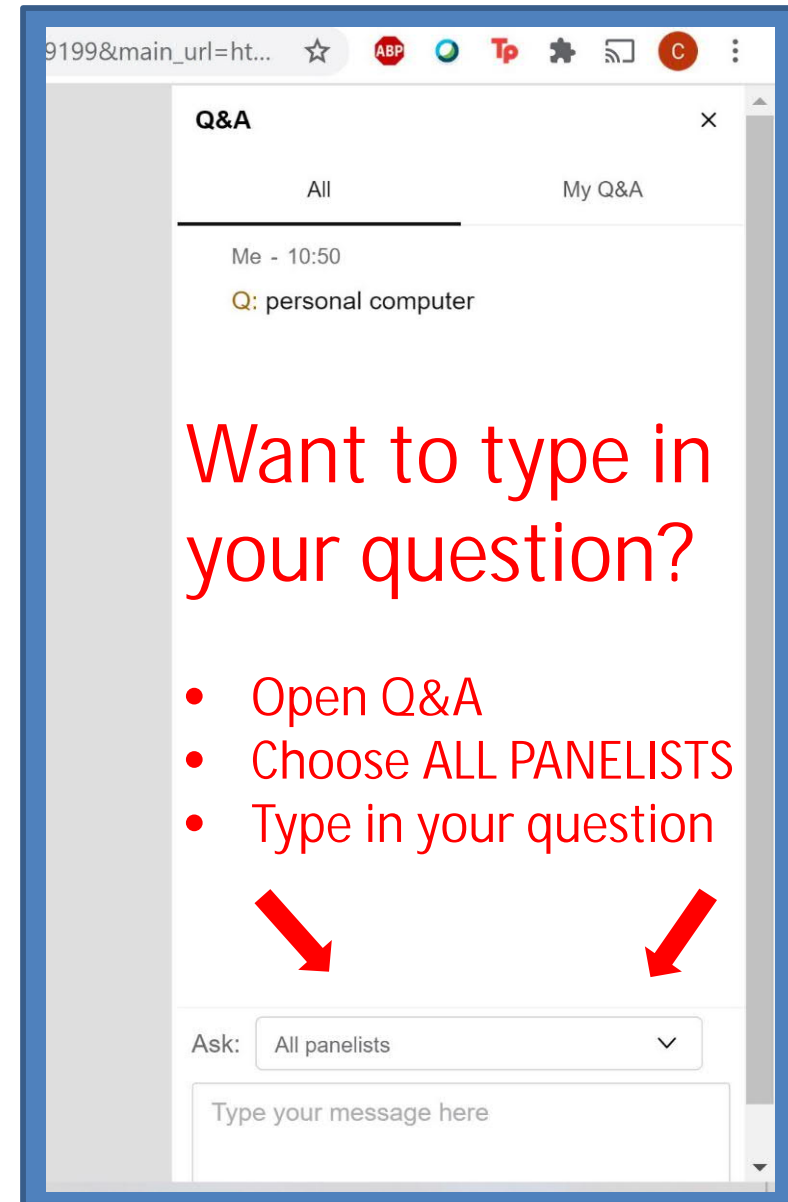
- ▶ Summer, 2022: Complete 90% plans
- ▶ Winter/Spring 2023: Finish 100% Plans / Start ROW Acquisition
- ▶ Spring/Summer 2023: Start Utility Relocations
- ▶ Summer/Fall 2024: Complete ROW & Utility Work
- ▶ Spring 2025: Begin Road Construction
- ▶ December 2026: Complete Construction

# Questions?

## ► Raise your Hand:



Click blue box to open Q&A Pane



Want to type in your question?

- Open Q&A
- Choose ALL PANELISTS
- Type in your question

## ► Karin Franklin

◆ 703-771-6674

◆ [kfranklin@leesburgva.gov](mailto:kfranklin@leesburgva.gov)

► [www.leesburgva.gov/evergreenmill](http://www.leesburgva.gov/evergreenmill)



Thank you!



7

King St

15

Evergreen Mills Rd

267

15

Battlefield Pkwy SE

Masons Ln

Sycolin Rd

Battlefield Pkwy SE

650

Google