

# Battlefield Parkway/Route 15 Bypass Interchange Neighborhood Meeting April 28, 2022, 7:00PM

*MEETING WILL BEGIN SHORTLY*

- ▶ You were muted as you entered.
- ▶ The attendee list will NOT be visible to other attendees.
- ▶ Text or call (571) 919-1646 for help w/ technical issues or email [croe@leesburgva.gov](mailto:croe@leesburgva.gov)



# Battlefield Parkway/Route 15 Bypass Interchange Neighborhood Meeting

April 28, 2022, 7:00PM

## Presenters:

Karin Franklin, Town of Leesburg

John Maddox, WRA

Dana Trone, WRA

This presentation will be recorded and posted on the  
Battlefield & Route 15 Bypass Interchange Project Webpage  
[www.LeesburgVA.gov/Battlefield-Rte15](http://www.LeesburgVA.gov/Battlefield-Rte15)



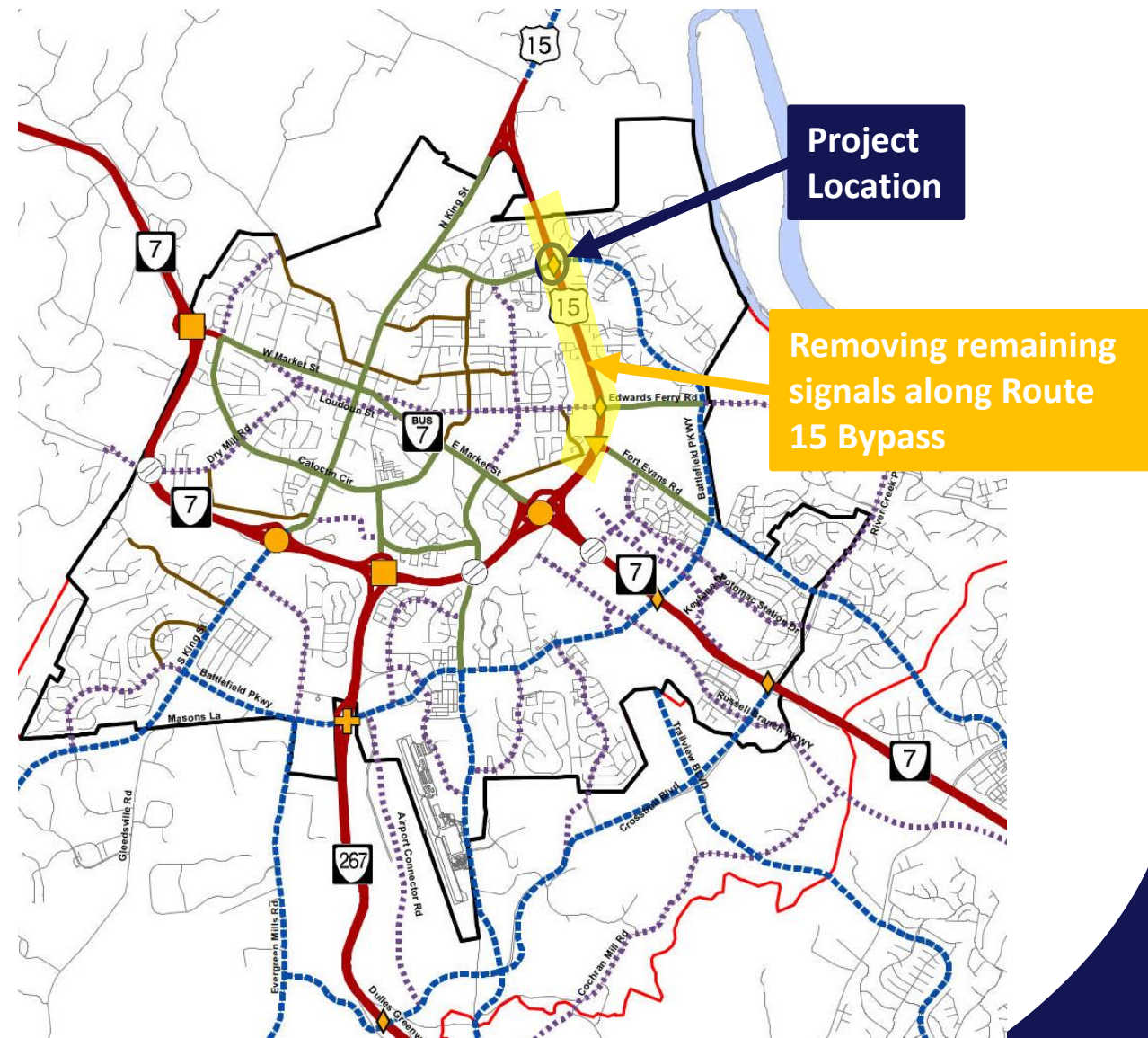
# Meeting Agenda

- Project background
  - Goals & initial study work
- Present alternatives
- Next steps
- Question-and-answer session



# Project Background

- Interchange at Route 15 Bypass and Battlefield Parkway was included in:
  - 1956 Leesburg Thoroughfare Plan
  - 1986 Town Plan
  - Legacy Leesburg Transportation Improvement Plan Adopted: March 22, 2022
  - Northern Virginia Transportation Authority (NVTA) TransAction 2040 Plan Update
  - Loudoun County Transportation Plan
- Right of Way acquired in 1987 as part of residential development
- NVTA is funding the initial phase to develop an Interchange Access Report (IAR)



# Project Goals

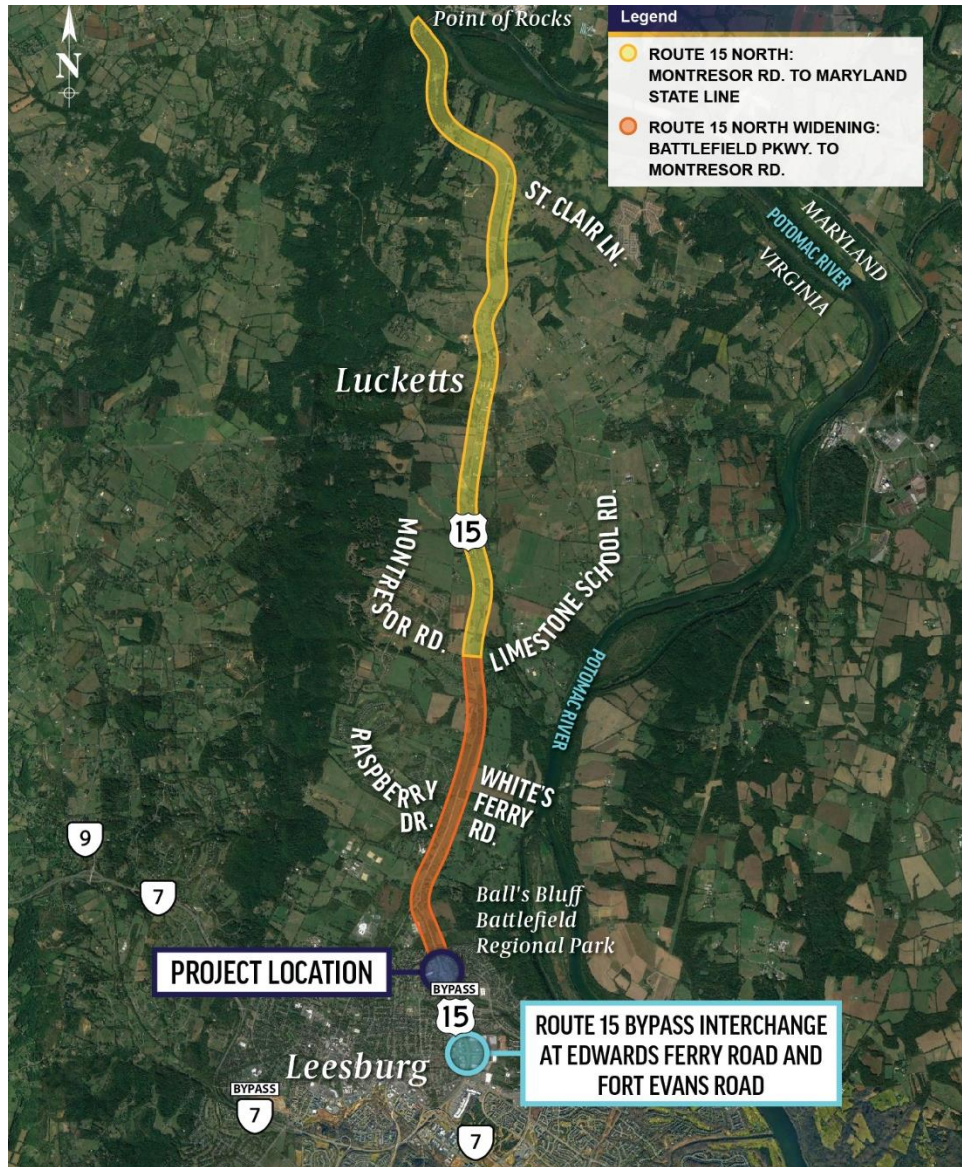
- Reduce intersection congestion
- Improve pedestrian and bicycle access across Route 15 Bypass
- Remove last signalized intersection on Route 15 Bypass

# Project Elements

- Grade separated interchange (overpass)
  - 10-foot shared use path along north side of Battlefield Parkway
  - 5-foot sidewalk along south side of Battlefield Parkway
- Remove access from Route 15 Bypass to Balls Bluff Road and Dry Hollow Road



# Adjacent Projects and Studies

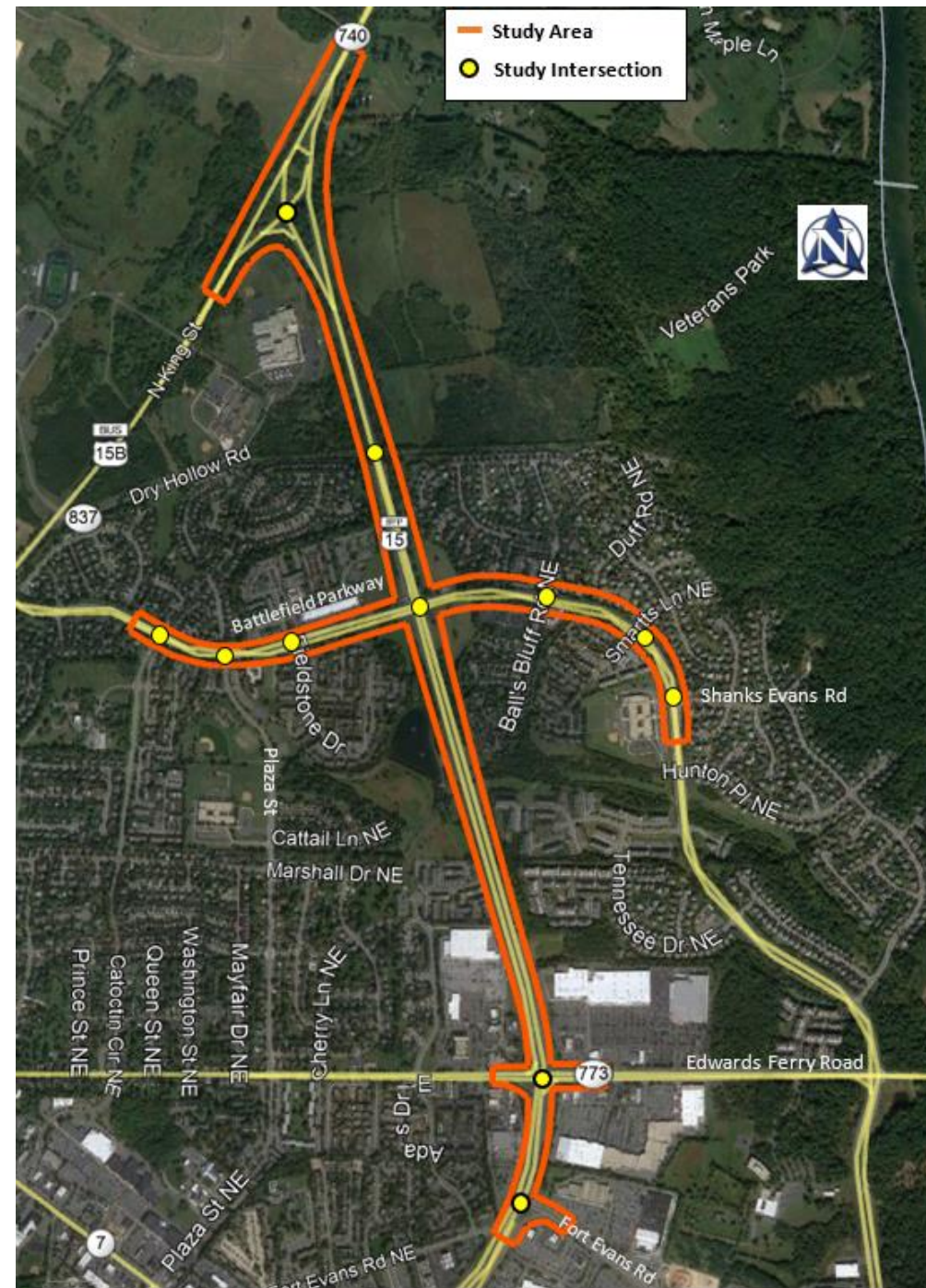


- Route 15 North Widening: Battlefield Parkway to Montresor Road (Loudoun County)  
<https://www.loudoun.gov/route15northwidening>
- Route 15 - Montresor Road to MD State Line Study (Loudoun County)  
<https://www.loudoun.gov/5550/Route-15-N-Montresor-Road-to-Maryland-St>
- Route 15 Bypass Interchange at Edwards Ferry Road and Fort Evans Road (VDOT/Town of Leesburg)  
[https://www.virginiadot.org/projects/northernvirginia/route\\_15\\_interchange.asp](https://www.virginiadot.org/projects/northernvirginia/route_15_interchange.asp)



# Traffic Study Underway

- Traffic forecasts (2030 opening year and 2050 design year)
  - Incorporate planned projects in the study area
  - 13-26% total daily increase in traffic on Route 15 Bypass from 2019 to 2050
  - 4-12% total daily increase in traffic on Battlefield Parkway from 2019 to 2050
  - With interchange improvements, traffic shifts from Battlefield Parkway to Route 15 Bypass to avoid the traffic signal
- Traffic operations analysis underway to evaluate interchange alternatives in detail
- Evaluating the need for traffic signals at Battlefield Parkway at Fieldstone Drive and Balls Bluff Road



# Limited Access Evaluation Alternative Access Study

- Why is an Alternative Access Study required?
  - One intersection is within the influence area of the proposed interchange ramps
  - Alternative access routes must be considered if these intersections are removed along Route 15 Bypass
- Alternatives have been developed for Balls Bluff Road and Dry Hollow Road





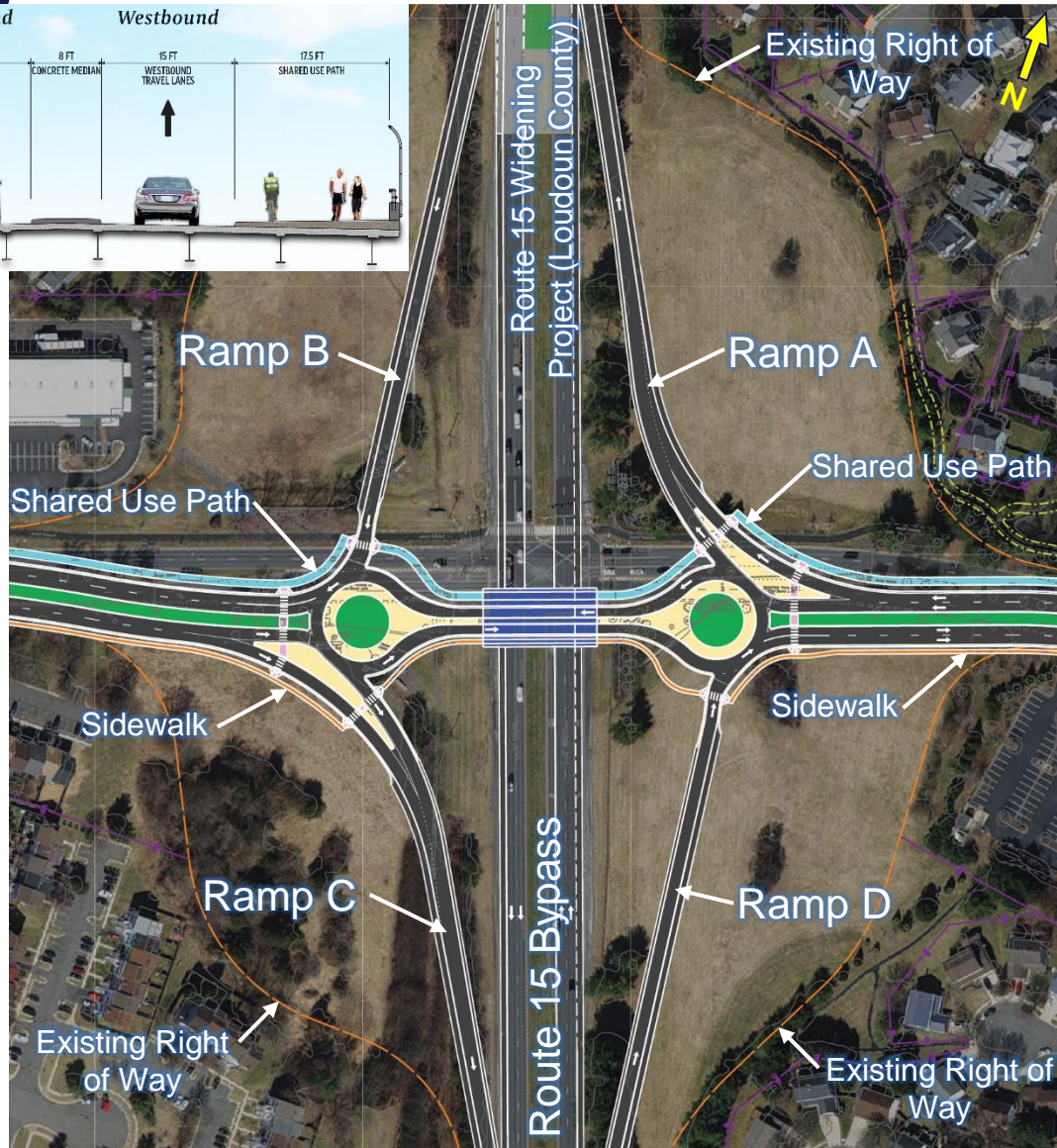
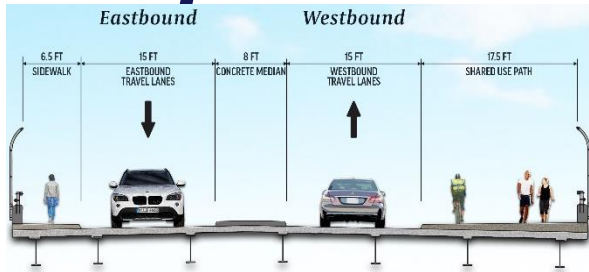
# Battlefield Parkway/Route 15 Bypass Interchange Alternatives

- Considered multiple options
- Narrowed down to 3 Alternatives
- Alternative A – Double Roundabout Interchange
  - Option 1 – At-Grade pedestrian/bicycle crossings
  - Option 2 – Grade-separated pedestrian/bicycle crossings
- Alternative B – Traditional Diamond Interchange
- Alternative C – Diverging Diamond Interchange



# Alternative A – Double Roundabout

## Option 1 – At-Grade Pedestrian Crossings



### Pros

- ✓ More direct pedestrian route compared to Option 2
- ✓ Improved vehicle safety due to slower travel speeds and reduced conflict points
- ✓ No signals required at off ramps

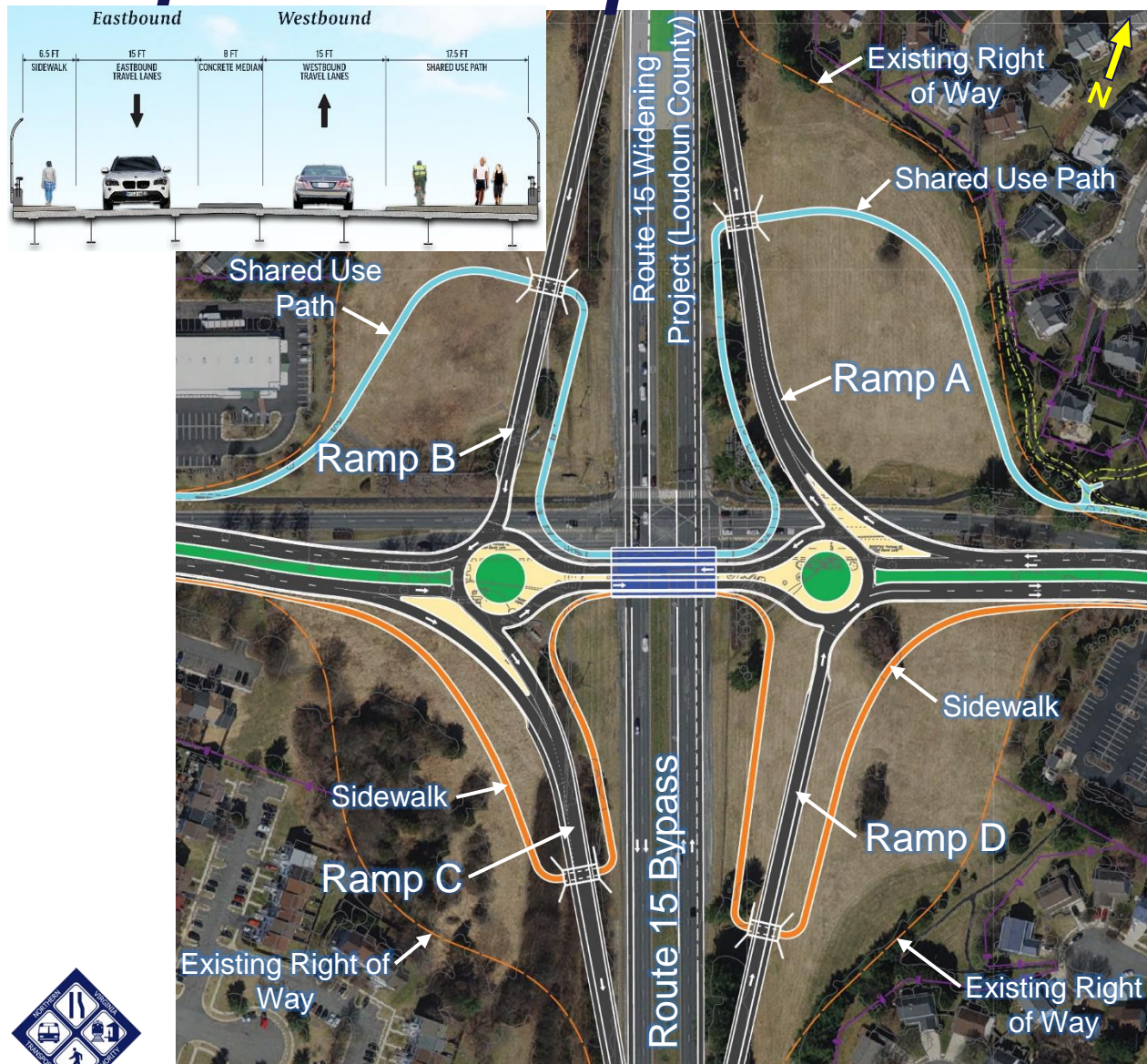
### Cons

- ✗ Unsignalized vehicle movements may affect pedestrian/bicycle safety
- ✗ Two-lane Battlefield Parkway is reduced to a single lane through the roundabouts



# Alternative A – Double Roundabout

## Option 2 – Separated Pedestrian Crossings



### Pros

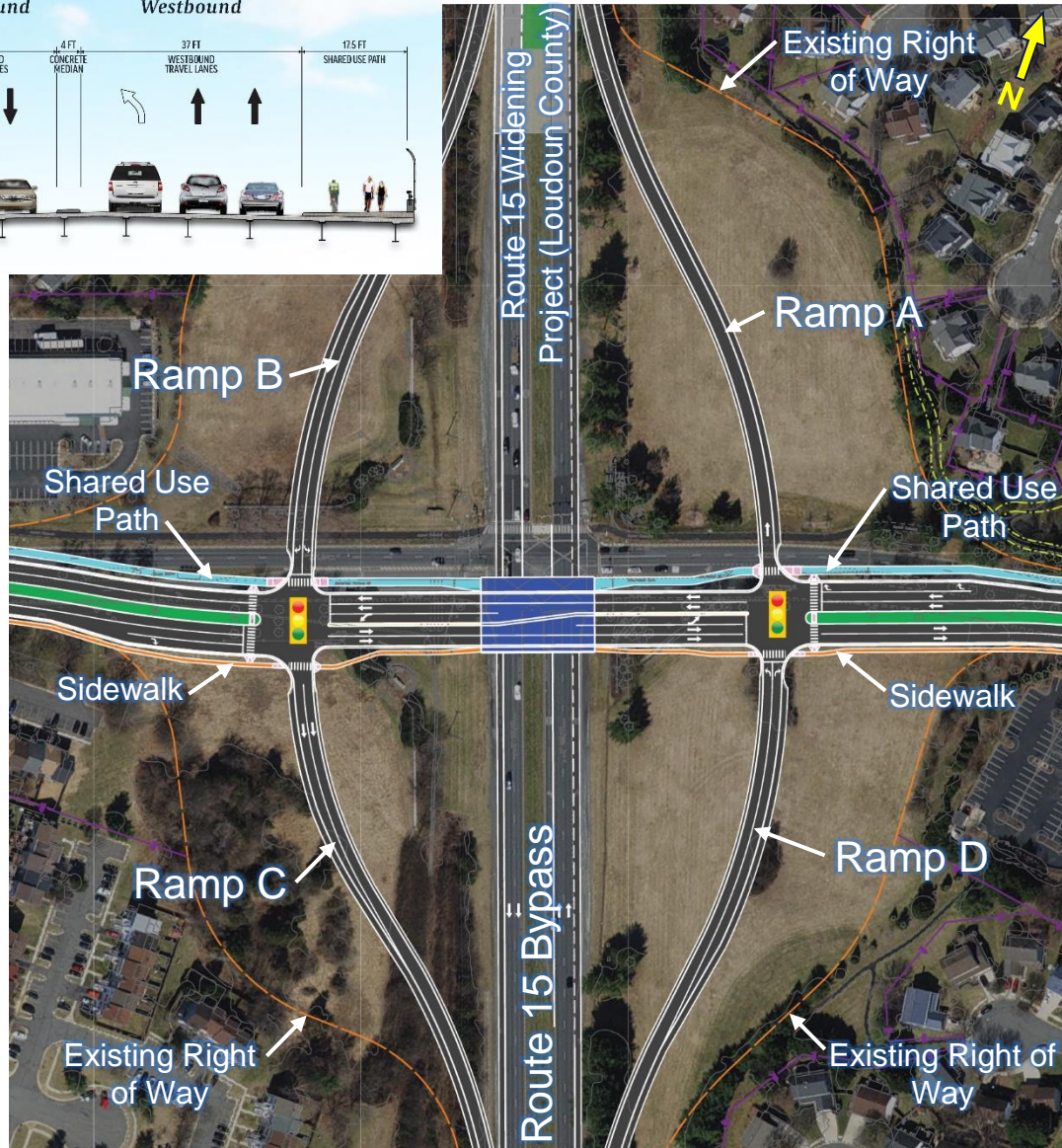
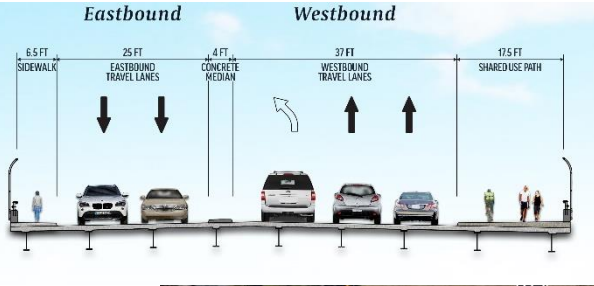
- ✓ Safer pedestrian/bicycle paths – do NOT cross vehicle travel lanes
- ✓ Better traffic flow - no signals required at off ramps
- ✓ Improved vehicle safety due to slower travel speeds and reduced conflict points

### Cons

- ✗ Additional construction cost for pedestrian tunnels
- ✗ Pedestrian/bicycle travel distance is longer and slopes up and down – may discourage use
- ✗ Two-lane Battlefield Parkway is reduced to a single lane through the roundabouts



# Alternative B – Traditional Diamond



## Pros

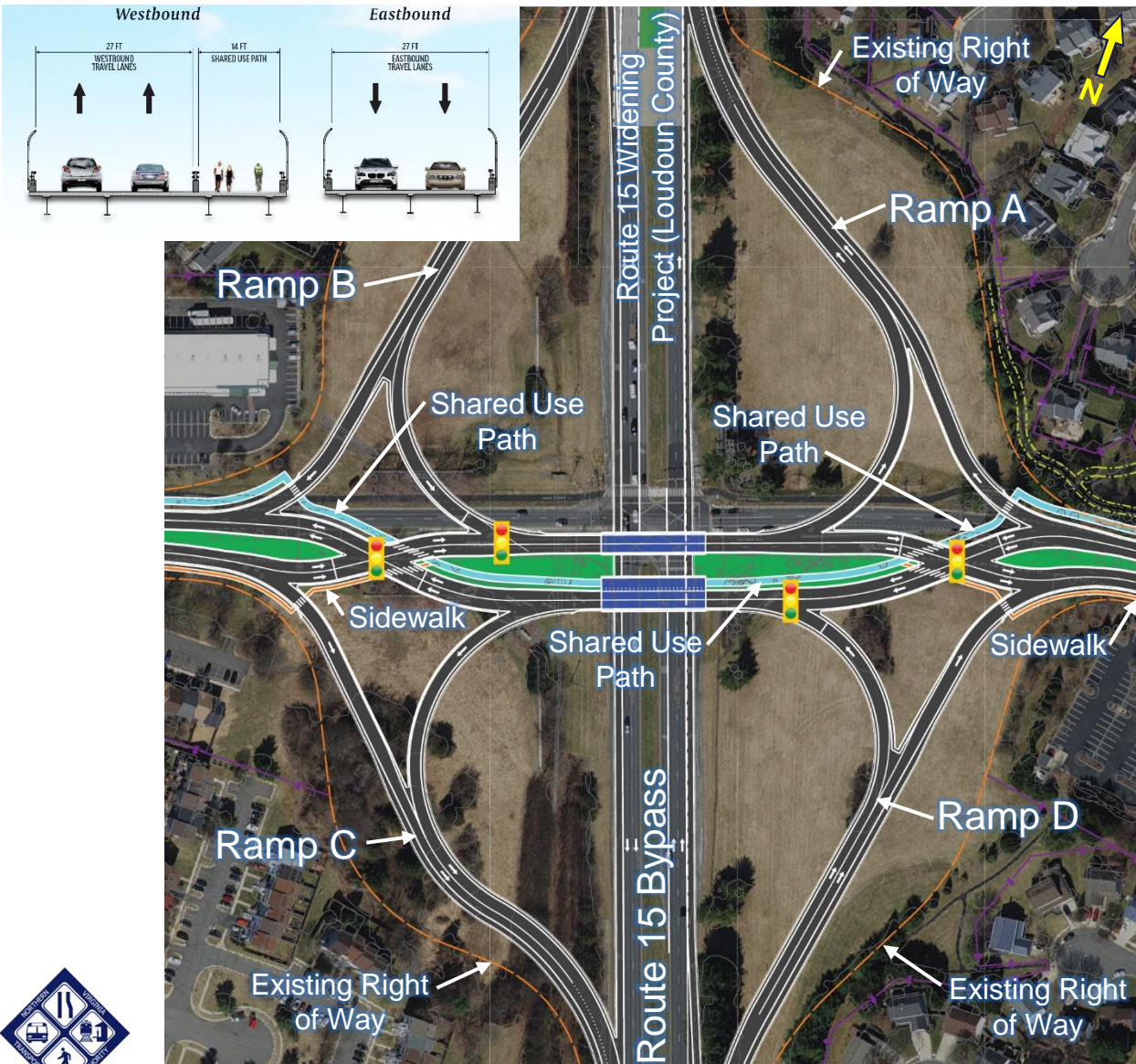
- ✓ Direct pedestrian route
- ✓ Pedestrian/bicycle crossings at signals

## Cons

- ✗ Two signals added – Non-standard spacing to Fieldstone Drive and Balls Bluff Road
- ✗ Traffic flow disrupted by additional signal
- ✗ Left-turn storage may require wider bridge



# Alternative C – Diverging Diamond



## Pros

- ✓ Direct pedestrian route
- ✓ Pedestrian/bicycle crossings at signals
- ✓ Fewer conflict points compared to a traditional diamond interchange

## Cons

- ✗ Two signals added – Non-standard spacing to Fieldstone Drive and Balls Bluff Road
- ✗ Shifts traffic to left side of road – could result in confusion for motorists
- ✗ Pedestrians/bicycles cross free right turn lanes and are routed to median on bridge



# Pedestrian Operations at Interchanges

## Alternative A Roundabout Option 1



- 8 uncontrolled crossings
- Lower travel speeds
- Lower risk of injury or fatal crashes
- Turns are designed for a speed of 20 mph or less

## Alternative A Roundabout Option 2



- Crossings are grade separated, reducing pedestrian conflicts
- Longer travel distances for pedestrians
- Pedestrians may not use the tunnels and cross at the roundabouts
- Potential safety issues in tunnels
- Higher cost

## Alternative B Traditional Diamond



- 6 controlled crossings
- No uncontrolled crossings
- Most direct travel path for pedestrians
- Potential conflicts with pedestrians occur at higher speeds increasing crash severity

## Alternative C Diverging Diamond



- 8 pedestrian crossings
  - 6 controlled
  - 2 uncontrolled
- Pedestrians travel through the DDI in the median
- Potential conflicts with pedestrians occur at higher speeds increasing crash severity



# Screening of Alternatives

Preliminary Screening Criteria	No Build ("Do Nothing")	Alternative A Double Roundabout Option 1	Alternative A Double Roundabout Option 2	Alternative B Traditional Diamond	Alternative C Diverging Diamond
Traffic Operations along Route 15 Bypass	●	●	●	●	●
Traffic Operations along Battlefield Parkway**	○	○	○	○	○
Pedestrian and bicycle convenience	○	○	○	○	○
Pedestrian and bicycle safety	○	○	●	○	○
Traffic Safety**	○	●	●	○	○
Intersection spacing along Battlefield Parkway	○	○	○	○	○
Community Support**	TBD	TBD	TBD	TBD	TBD
Right of Way Impacts**	●	○	○	○	○
Project Cost**	N/A	○	○	○	○
Environmental Impacts**	○	○	○	○	○

## Legend

●	○	○	○	●
Excellent	Favorable	Fair	Unfavorable	Poor

\*\* Denotes criteria currently under evaluation as part of traffic operations analysis and concept development



# Next Steps

- **May 2022:** Conduct public survey and compile results
- **Summer 2022:** Town Council recommends alternative for more detailed study
- **Fall/Winter 2022:** Refine recommended alternative
- **Winter/Spring 2023:**
  - Hold 2nd Neighborhood Meeting
  - Draft the Interchange Access Report
- **Summer 2023:** Town Council endorses IAR
- **Fall 2023:** IAR review/approval by VDOT
- **After IAR Approval:** Initiate funding requests to begin detailed design





# We Want Your Input!

- What is your preferred alternative? Let us know through the on-line survey which will be available through the webpage after the meeting.
- Survey results will be presented to Town Council and will be important information as they make their alternative recommendation.
- Provide feedback by May 16, 2022



## On-Line Survey

Online at  
[www.leesburgva.gov/Battlefield-Rte15](http://www.leesburgva.gov/Battlefield-Rte15) via the online survey.

Survey Closes May 16, 2022!



## Mail Survey

Request a hard copy of the survey and mail or drop off at Town Hall



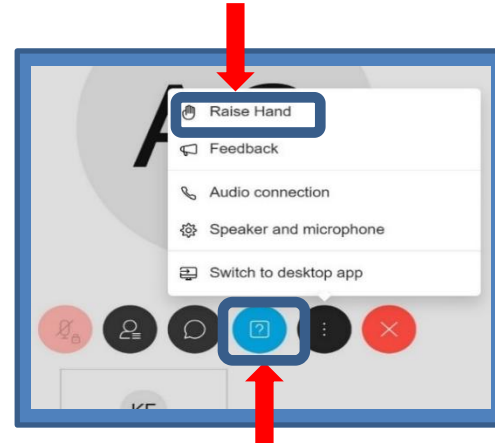
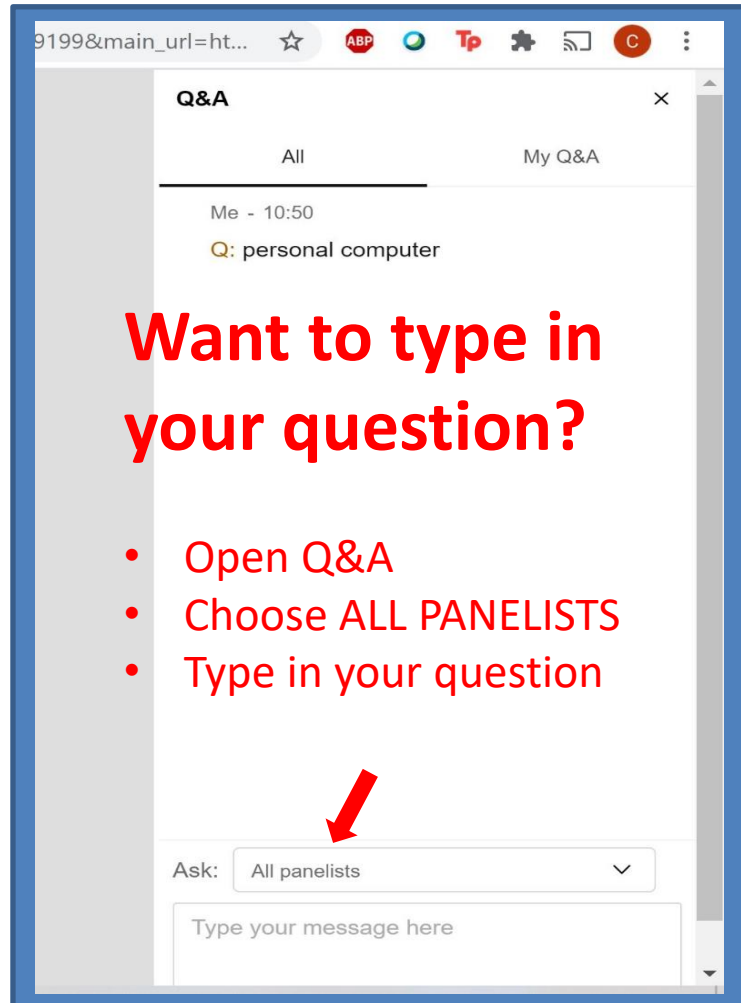
## Questions? Email/Call

Karin Franklin  
[kfranklin@LeesburgVA.gov](mailto:kfranklin@LeesburgVA.gov)  
703-771-6774

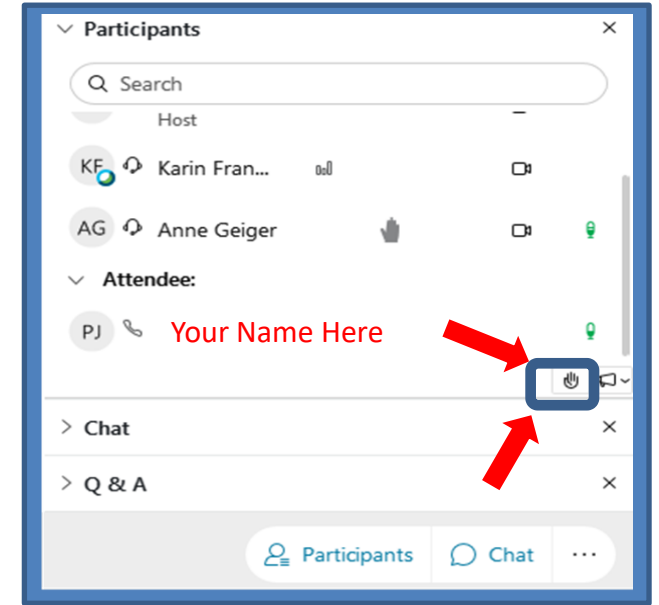


# Questions?

- Type your question



Click blue circle to open Q&A Pane



- Raise your Hand

- Karin Franklin
  - 703-771-6674
  - [kfranklin@leesburgva.gov](mailto:kfranklin@leesburgva.gov)
- [www.leesburgva.gov/Battlefield-Rte15](http://www.leesburgva.gov/Battlefield-Rte15)

