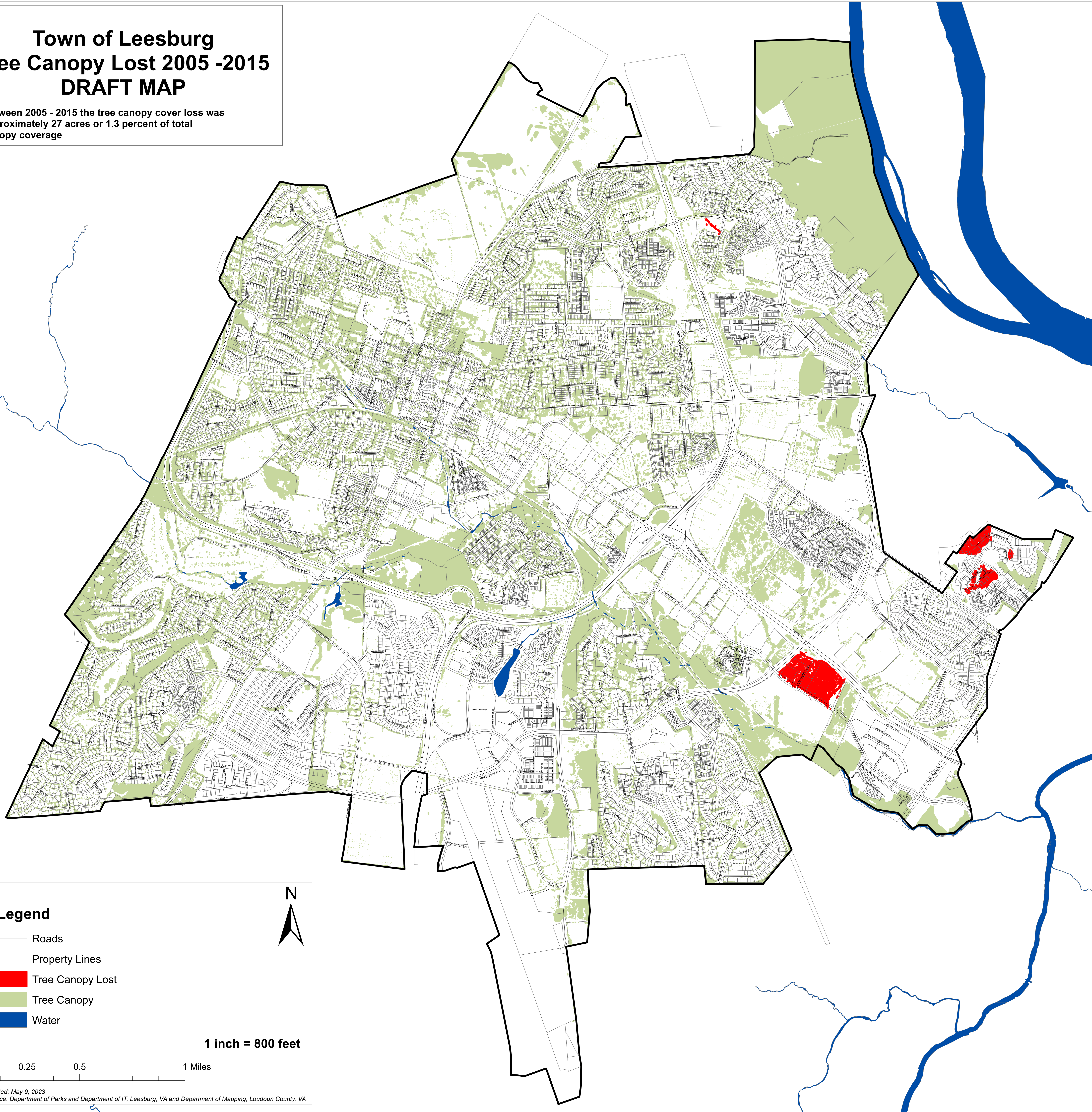


Town of Leesburg Tree Canopy Lost 2005 -2015 DRAFT MAP

Between 2005 - 2015 the tree canopy cover loss was approximately 27 acres or 1.3 percent of total canopy coverage



Legend

- Roads
- Property Lines
- Tree Canopy Lost
- Tree Canopy
- Water

1 inch = 800 feet

0 0.25 0.5 1 Miles

Map Created: May 9, 2023
Data Source: Department of Parks and Department of IT, Leesburg, VA and Department of Mapping, Loudoun County, VA