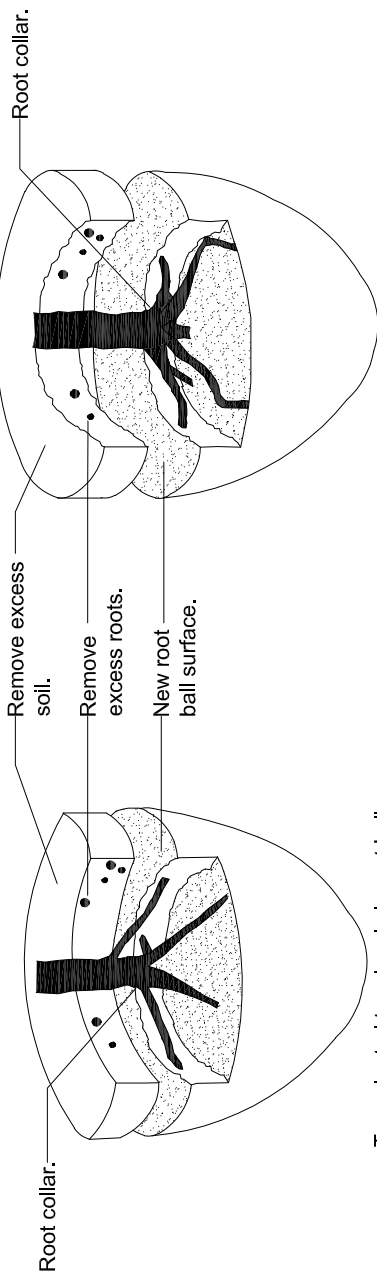




Article # X-XXX.X

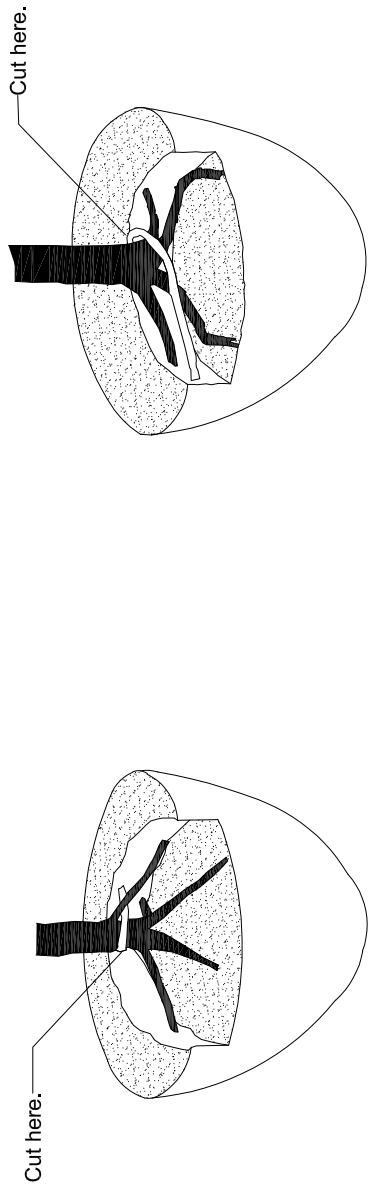
Step 1 - Remove soil and roots over the root collar.



Tree planted too deeply in root ball. Remove excess soil and roots to meet root inspection detail.

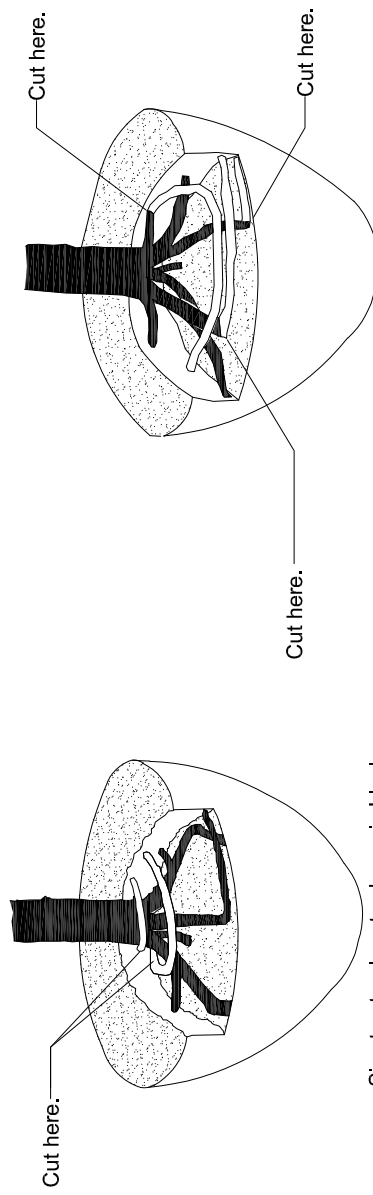
Tree planted too deeply in root ball. Remove excess soil and roots to meet root inspection detail.

Step 2 - Remove defects.



Five structural (large) roots shown in black. Remove structural (white) root wrapping root collar.

Four structural roots shown in black. Remove root (white) growing over structural roots.



Six structural roots shown in black. Remove structural roots (white) growing over root collar by cutting them just before they make an abrupt turn.

Seven structural roots shown in black. Remove structural roots (white) growing around or over root collar by cutting them just before they make an abrupt turn.

BASED ON DESIGN BY
URBAN TREE FOUNDATION © 2014

Not To Scale

REVISIONS

NO.	DATE:
1	4/20/2023

ROOTBALL CORRECTION DETAIL