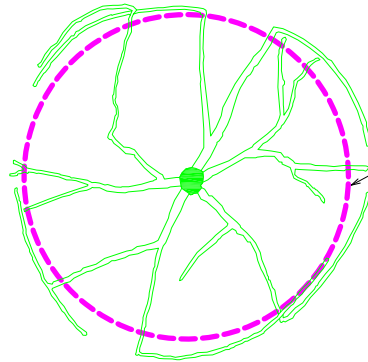




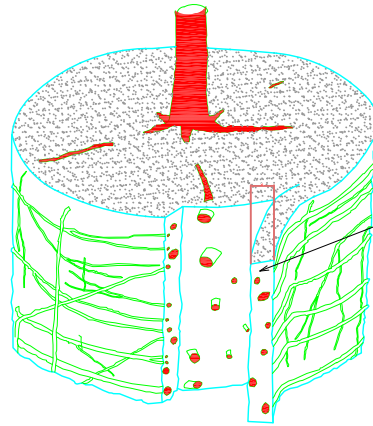
Article # X-XXX.X

BEFORE SHAVING



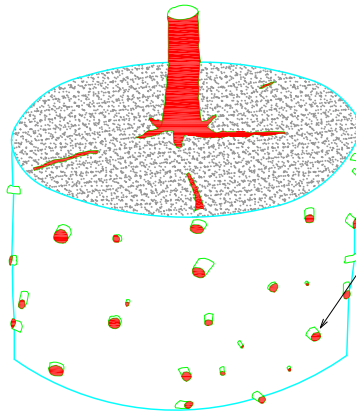
Shave root ball here to remove all roots growing on periphery.

SHAVING PROCESS



Shave outer periphery of the root ball a maximum of 2" thick.

SHAVING COMPLETE



Root tips exposed at periphery of root ball. All roots growing around periphery are removed.

Notes:

1. All trees shown are rejectable unless they undergo recommended correction.
2. First step 1, then step 2. Adjust hole depth to allow for the removal of excess soil and roots over the root collar.
3. Roots and soil may be removed during the correction process; substrate/soil shall be replaced after the correction has been completed.
4. Trees shall pass root observations detail following correction.
5. Based on design by Urban Tree Foundation © 2014

Not To Scale

REVISIONS			
NO.	DATE:		
1	4/20/2023		
2	9/27/2023		

ROOTBALL SHAVING DETAIL

DRAWING VS-13

PAGE XXX