

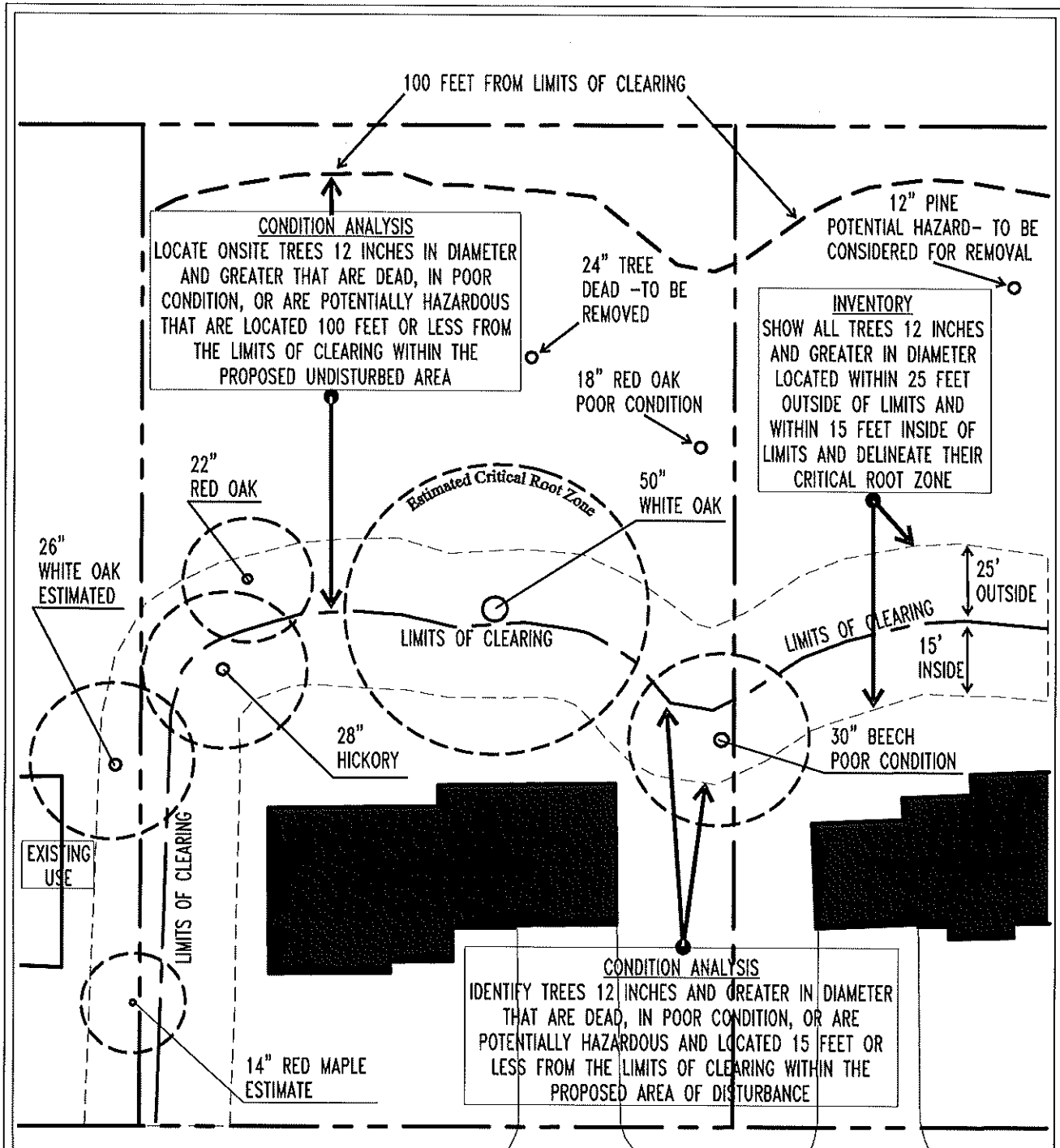
Tree Management Report Guide

Table 12.X

TREE MANAGEMENT REPORT [ANSI A300-Part-5]							
Tree Key	Common Name	Botanical Name	DBH	CRZ	Condition	Suitability	Comments
#13	Hackberry	<i>Celtis occidentalis</i>	14"	28'	80	Good	Preserve, root prune, tree protection
(1)	(2)	(3)	(4)	(5)	(6)	(7)	(8)
EXAMPLE							

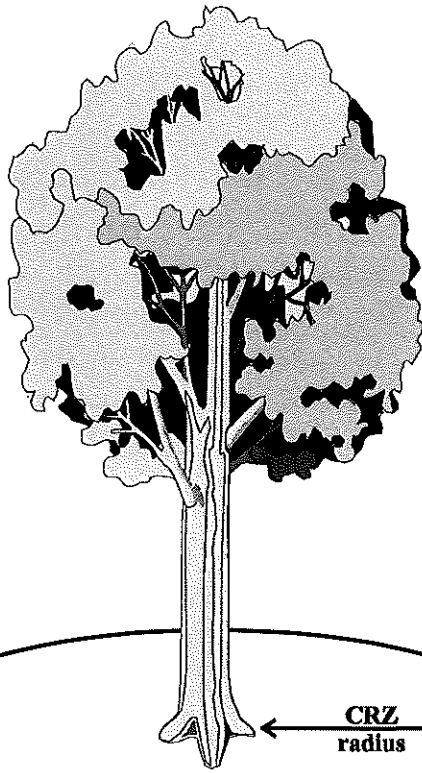
1. **Tree Key**, to identify trees on the survey plan. A plan must be prepared with tree locations and represented with their full canopy spread
2. **Common Name**
3. **Botanical Name**
4. **DBH**, Diameter at Breast Height as measured 54 inches above ground level
5. **CRZ**, Critical Root Zone, 1 foot of radius for each inch of DBH
6. **Condition** shall follow the CTLA* Guide for rating tree condition [see below]
7. **Suitability**, for conservation shall be rated as Good, Moderate, or Poor [ANSI A300-Part-5]
8. **Comments**, may include an evaluation of construction effects; note proximity to structures, roads, utilities; recommendations for retention/removal; specific conservation recommendations; post-construction recommendations

*CTLA, Council of Tree and Landscape Appraisers condition rating shall be derived from the most current Guide for Plant Appraisal
The Condition rating is determined by the sum of the rating scores for roots, trunk, scaffold branches, smaller branches/twigs, and foliage.



Not To Scale

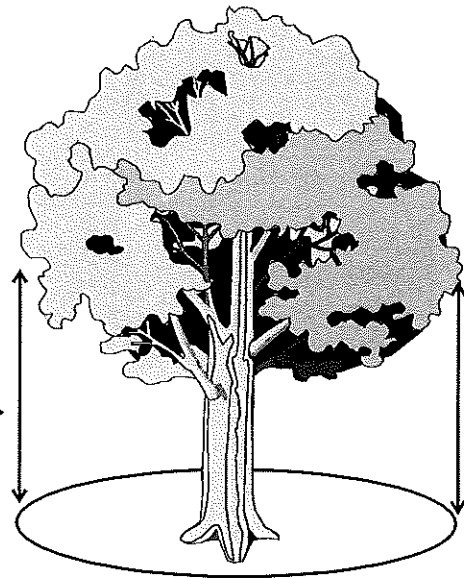
**TREE INVENTORY
AND CONDITION ANALYSIS
GUIDE**



Critical Root Zone (CRZ)

Critical Root Zone Formula
1 foot of Critical Root Zone radius
for each
1 inch of trunk diameter

Dripline of Tree



Dripline →

Not To Scale

CRITICAL ROOT ZONES AND DRIPLINES OF TREES