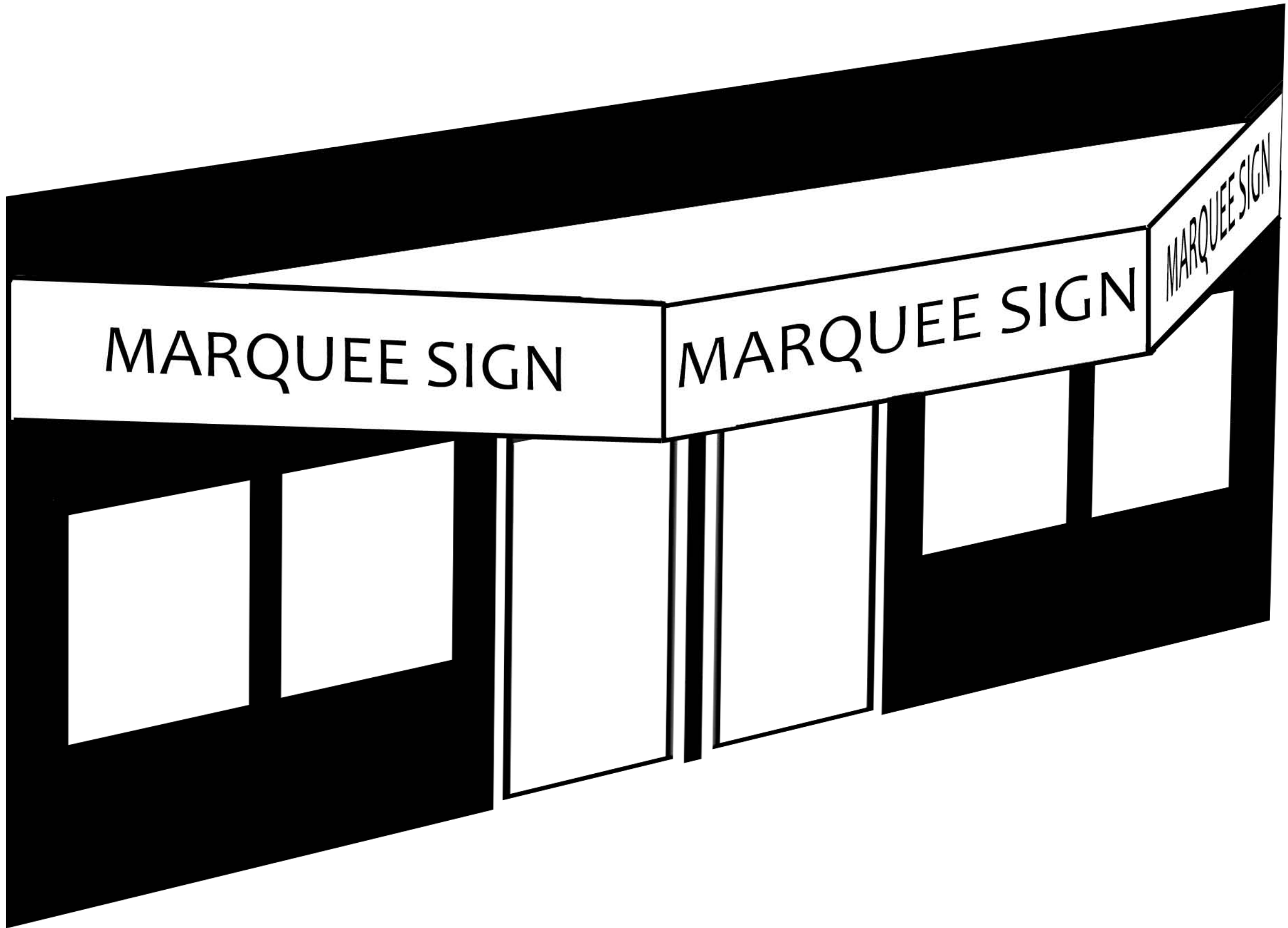


MARQUEE SIGN

MARQUEE SIGN

MARQUEE SIGN

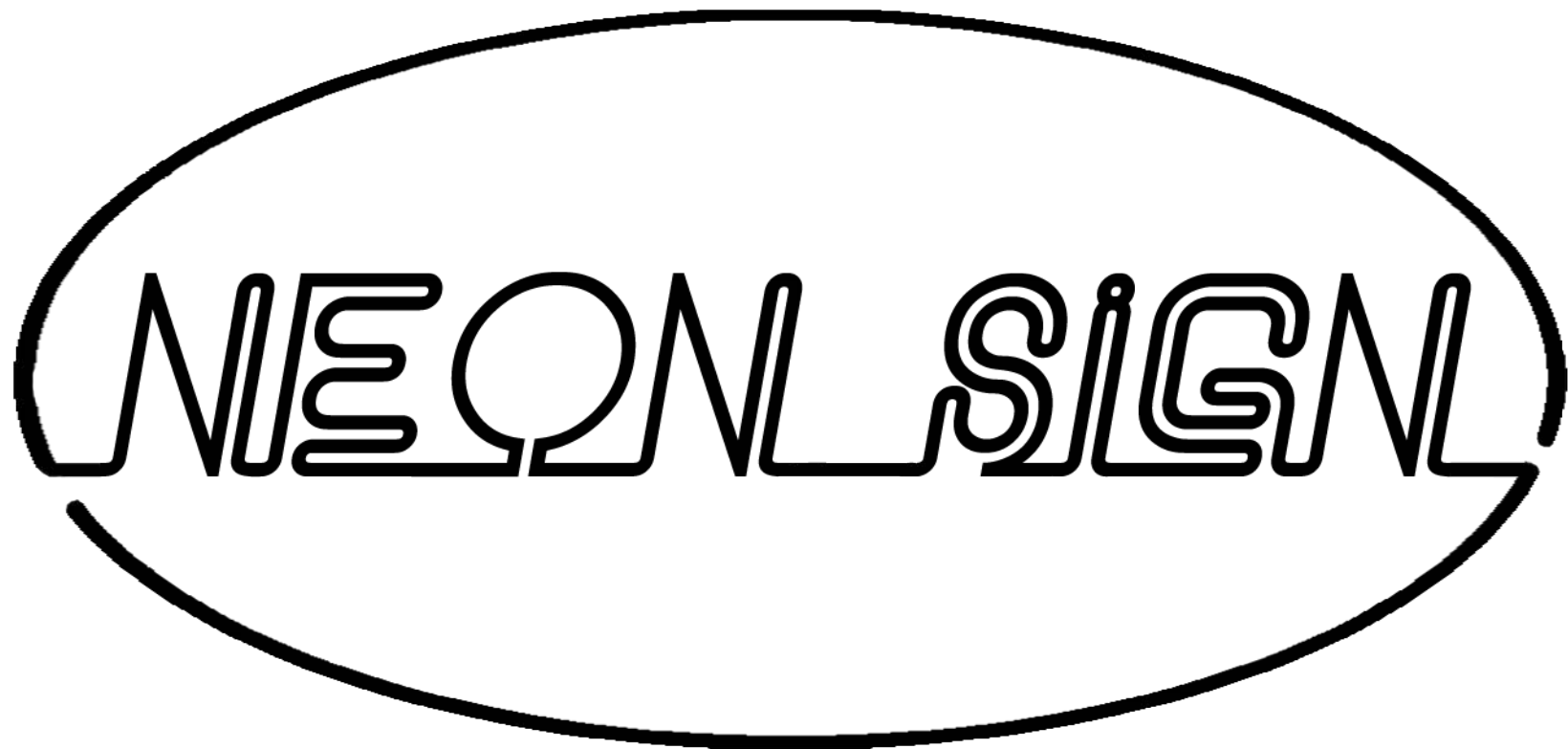


SIGN

BLIND TRAVEL
SIGNAGE

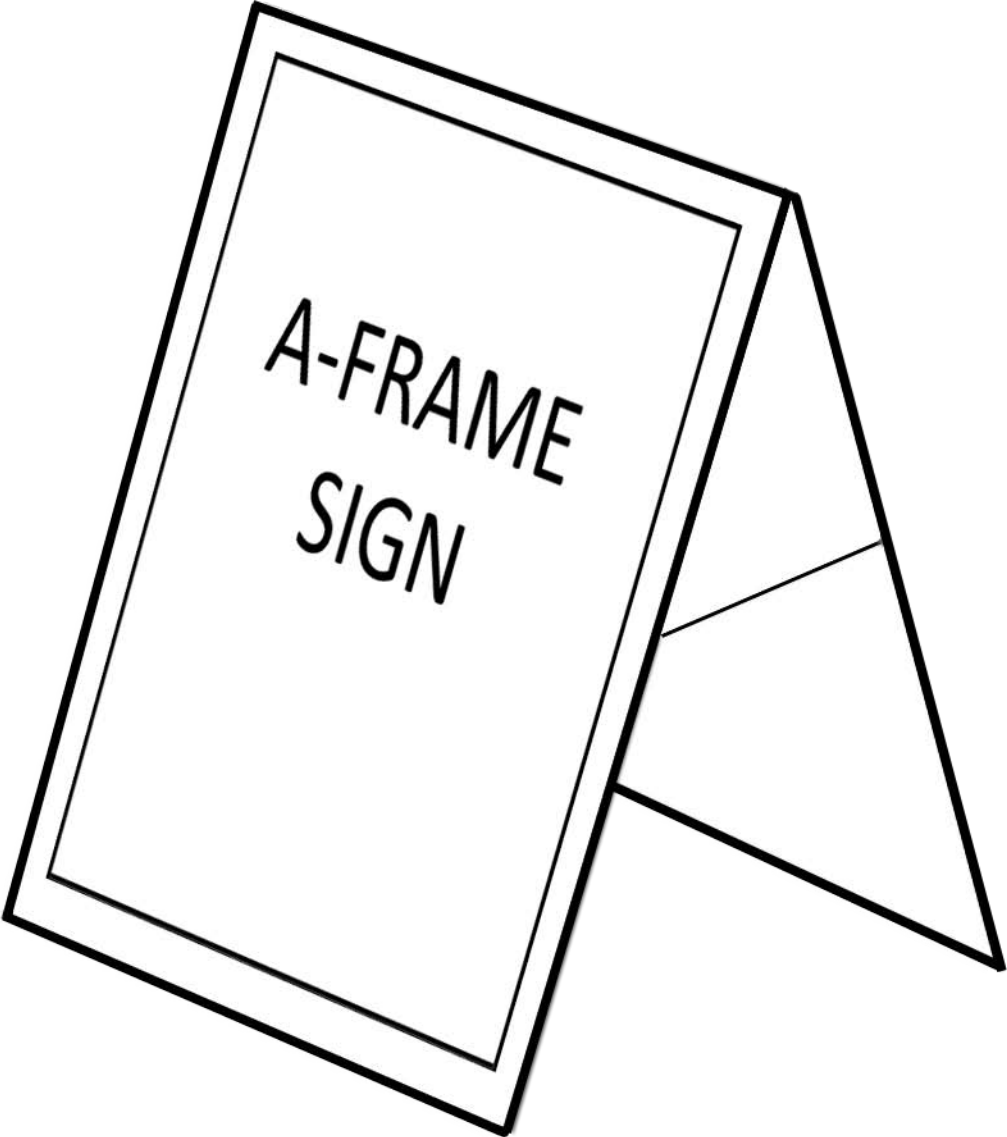
A schematic diagram of a window layout. The entire area is enclosed in a thick black border. On the left side, there is a large rectangular window. Inside this window, the text "WINDOW SIGN" is centered. Above this window is a smaller rectangular area. To the right of the large window is a vertical rectangular area, which appears to be a door or a narrow window. This area is enclosed by a double-line black border. Above this vertical area is another smaller rectangular area. The overall layout is divided into several rectangular sections by thick black lines.

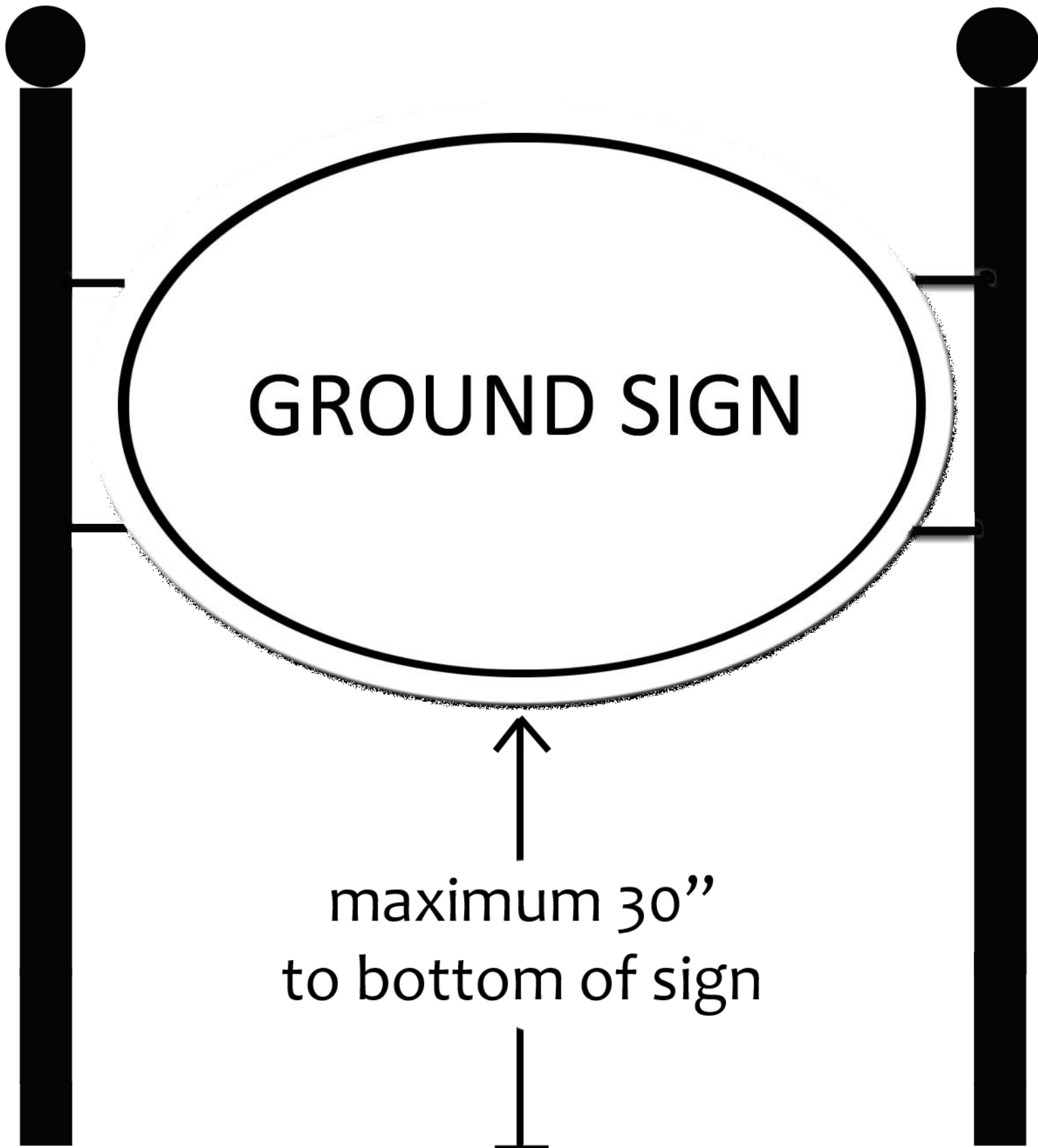
WINDOW SIGN



NEON SIGN

The image features a stylized logo for "NEON SIGN". The text is rendered in a thick, double-lined, outlined font that mimics the appearance of neon tubing. The letters are bold and blocky, with a slight slant. The word "NEON" is followed by a space and then "SIGN". The entire text is contained within a large, horizontally-oriented oval frame, also drawn with a thick black outline. The background is plain white.



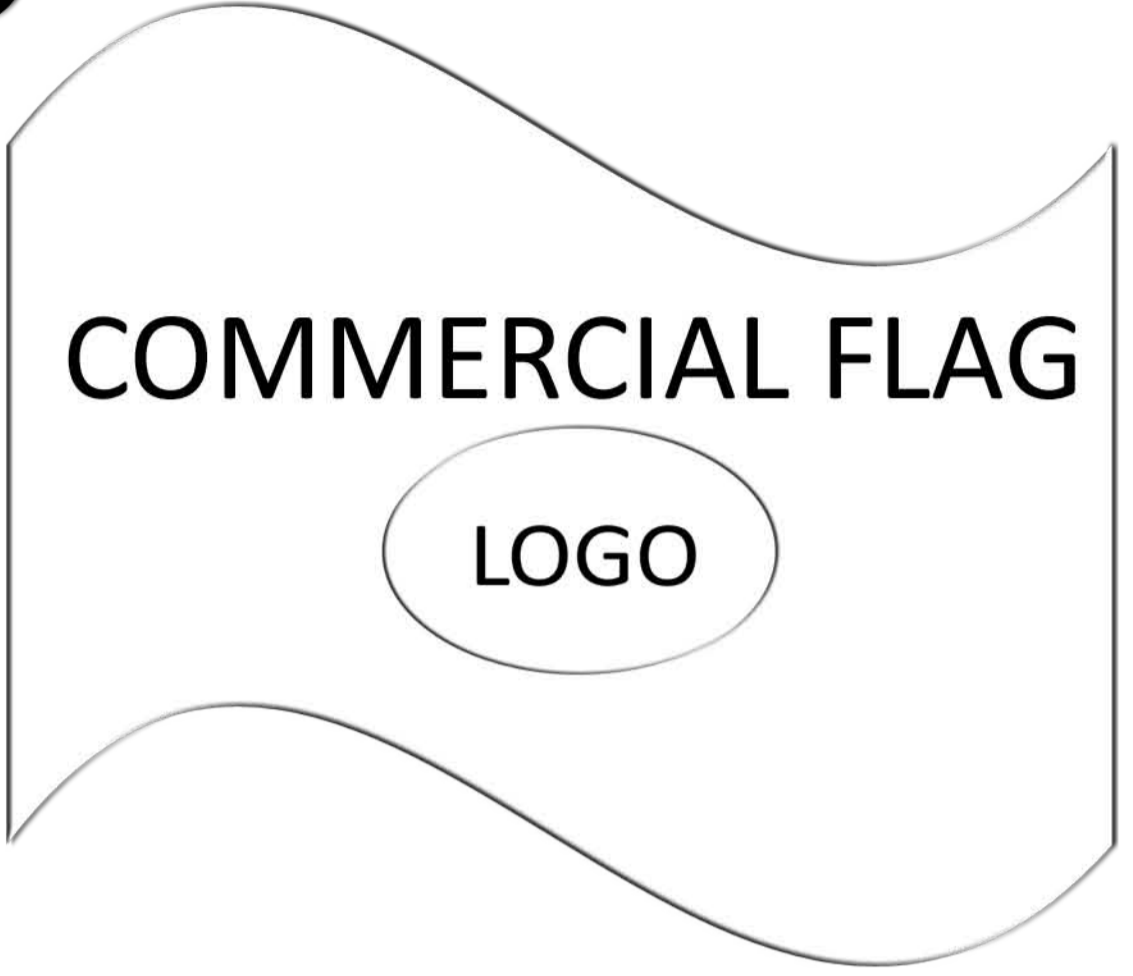


GROUND SIGN

maximum 30''
to bottom of sign

AWNING / CANOPY SIGN

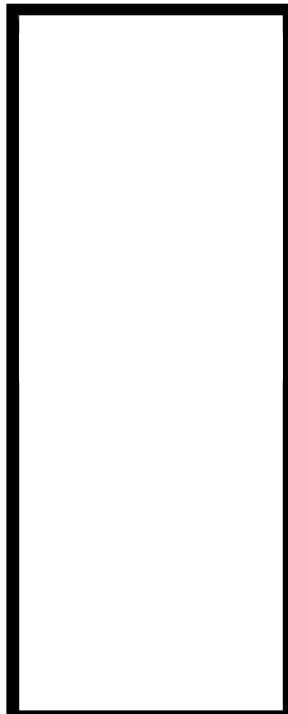
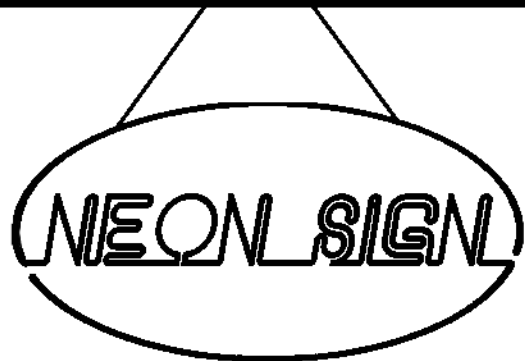
The diagram illustrates a sign structure for an awning or canopy. It features a white rectangular sign panel with a decorative, scalloped top edge. The sign is supported by two thick, black vertical posts. The entire structure is set against a white background, with a thin black line defining the top boundary of the sign area.



COMMERCIAL FLAG



LOGO





PERMANANT TEXT

CHANGEABLE COPY

CHANGEABLE COPY

CHANGEABLE COPY

width
(inches)

Calculation

of

Sign Area

height
(inches)

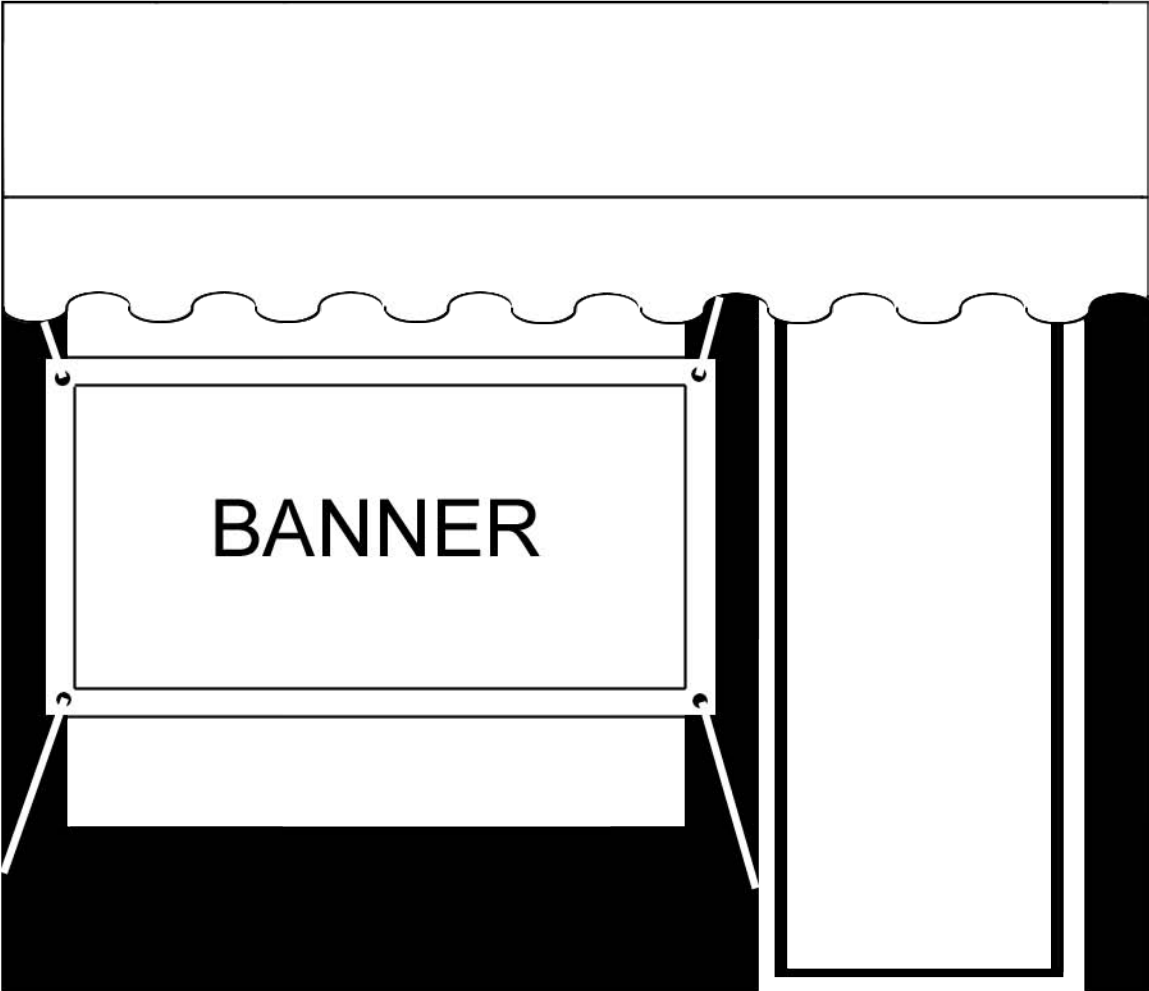
width
(inches)

Calculation

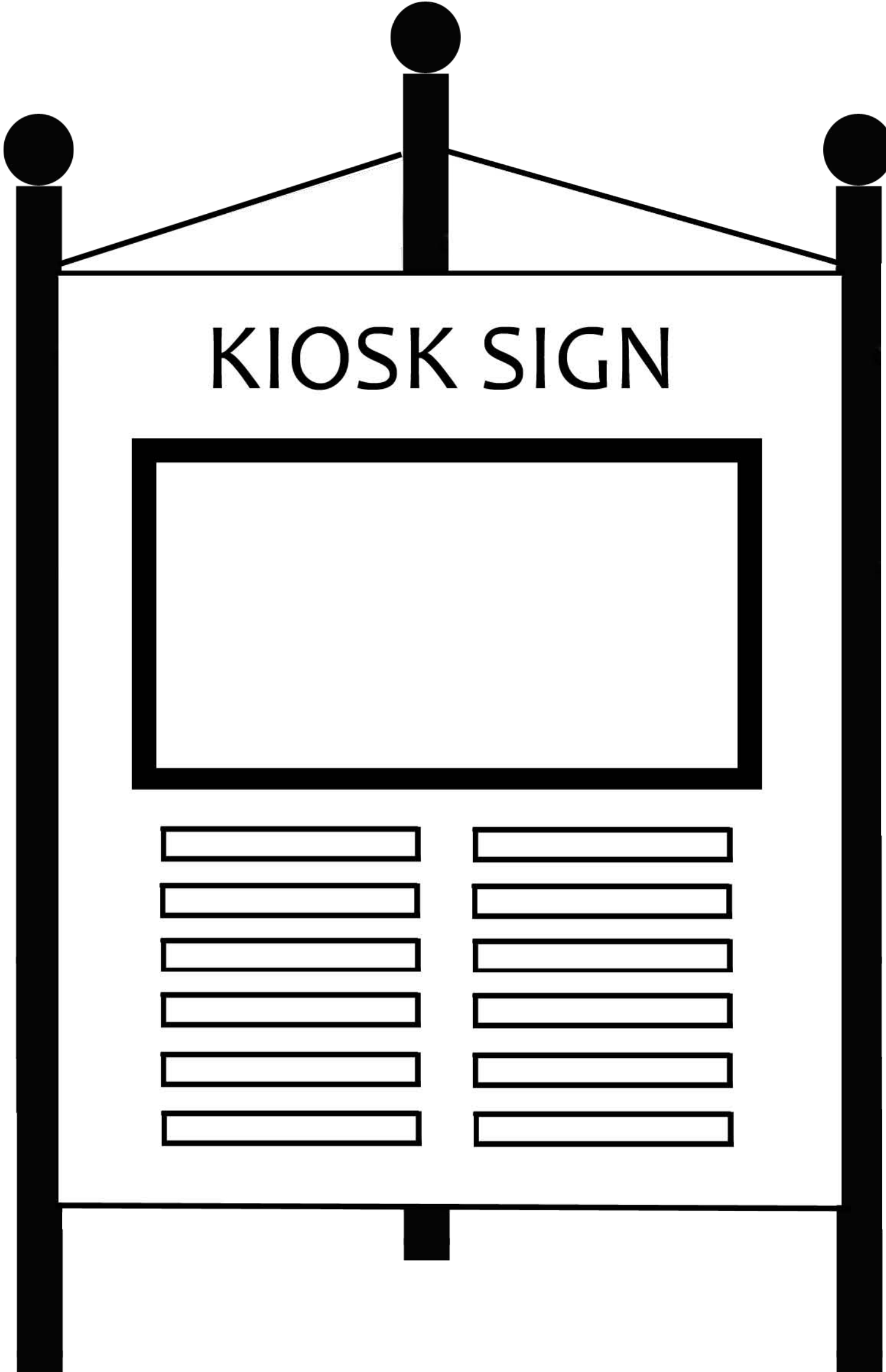
of

Sign Area

height
(inches)



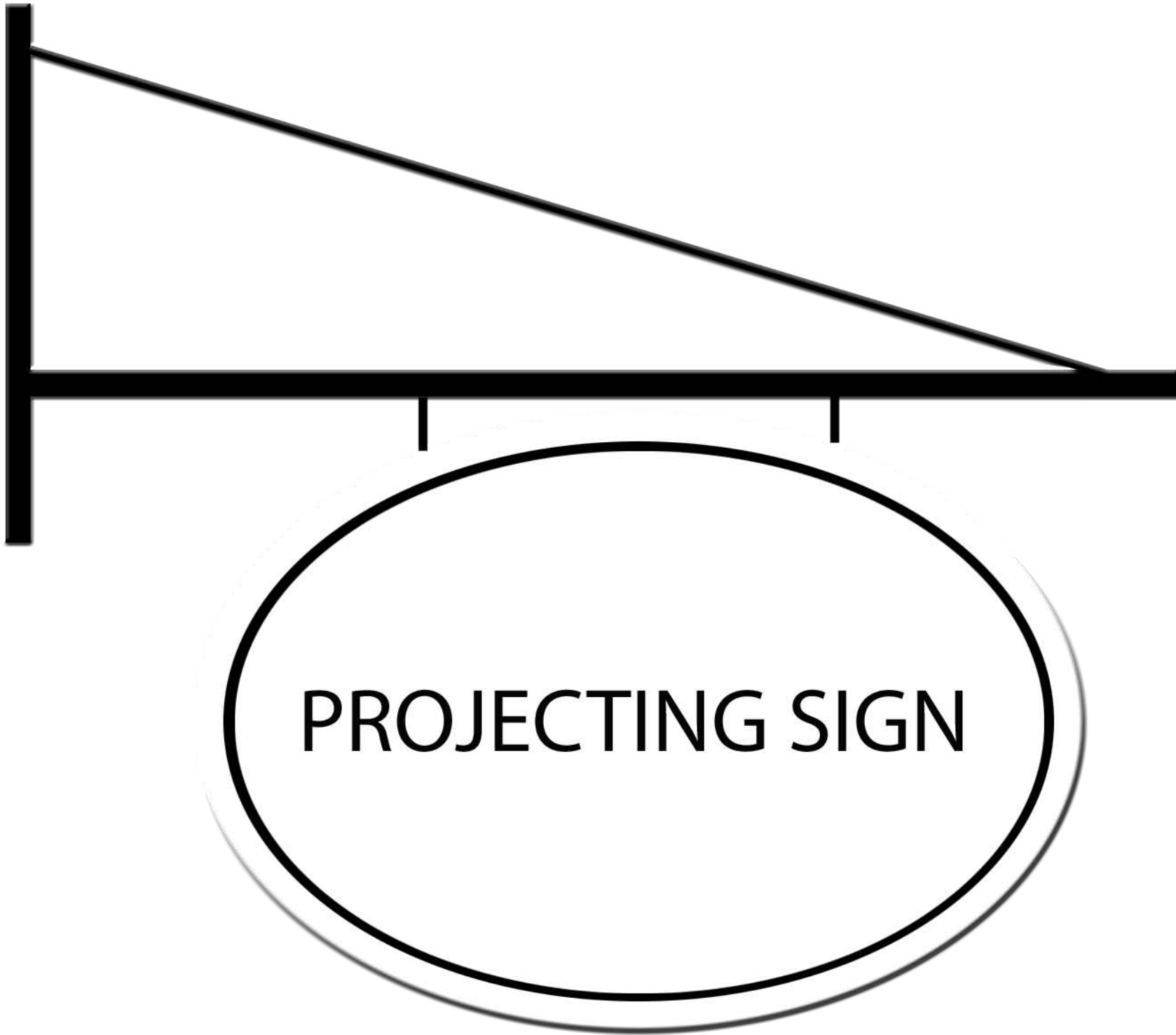
BANNER



KIOSK SIGN



**MONUMENT
SIGN**



PROJECTING SIGN