

Town of Leesburg Virginia Police Department



2004 Annual Report

Joseph R. Price
Chief of Police



LEESBURG POLICE 2004 FACTS AT A GLANCE

CRIMINAL ACTIVITY

VIOLENT CRIME (murder, rape, robbery, aggravated assault) -
49% decrease

SERIOUS OFFENSES (GROUP A)-
3% decrease

POLICE ACTIVITY (CALLS FOR SERVICE AND OFFICER INITIATED CALLS) –
5.3% increase

RESPONSE TIMES
Emergency –
2 minutes 36 seconds
Non-Emergency -
5 minutes 1 second

ARRESTS
Total - 1608
Adult – 1366
Juvenile – 242

TRAFFIC ACTIVITY

ACCIDENTS
Most accidents (Time and Day) –
Fridays 5:00 P.M. to 6:00 P.M.
Intersection with highest number of
accidents – E. Market at Cardinal
Park
Causation Factor – Driver Inattention

PARKING TICKETS – 2387

TRAFFIC TICKETS – 4457

DUI Arrests – 231



Leesburg Police Department Annual Crime Report - 2004

Dear Members of the Leesburg Community:

I am pleased to present you with the Police Department's 2004 Annual Crime Report. The mission of the Town of Leesburg Police Department is to work in partnership with the community to provide the highest quality of police services using innovative, proactive approaches to improve Leesburg, while at the same time maintaining respect for the rights and dignity of all. Our community has faced and continues to face a number of challenges ranging from public safety issues to exploding growth, all of which have an impact on the quality of life in our community. I am proud of the accomplishments and dedicated efforts of the men and women of this Police Department. These accomplishments also reflect our strong commitment to our organizational values of Leadership, Pride and Dedication.

During 2004, the department has employed a number of strategies to improve our responsiveness and to police "smarter." Technology has been a key tool as well as management programs such as the Crime and Traffic Accountability Program (CTAP), which focuses department resources on locations and events that analysis shows are having the greatest impact on community safety and quality of life.

I know that I speak for every member of the Leesburg Police Department in saying that our success would not be possible if it were not for the strong partnership that we have with the town leadership, other town departments and most of all you the community. We pledge to continue to work with our partners to achieve our shared vision for Leesburg.

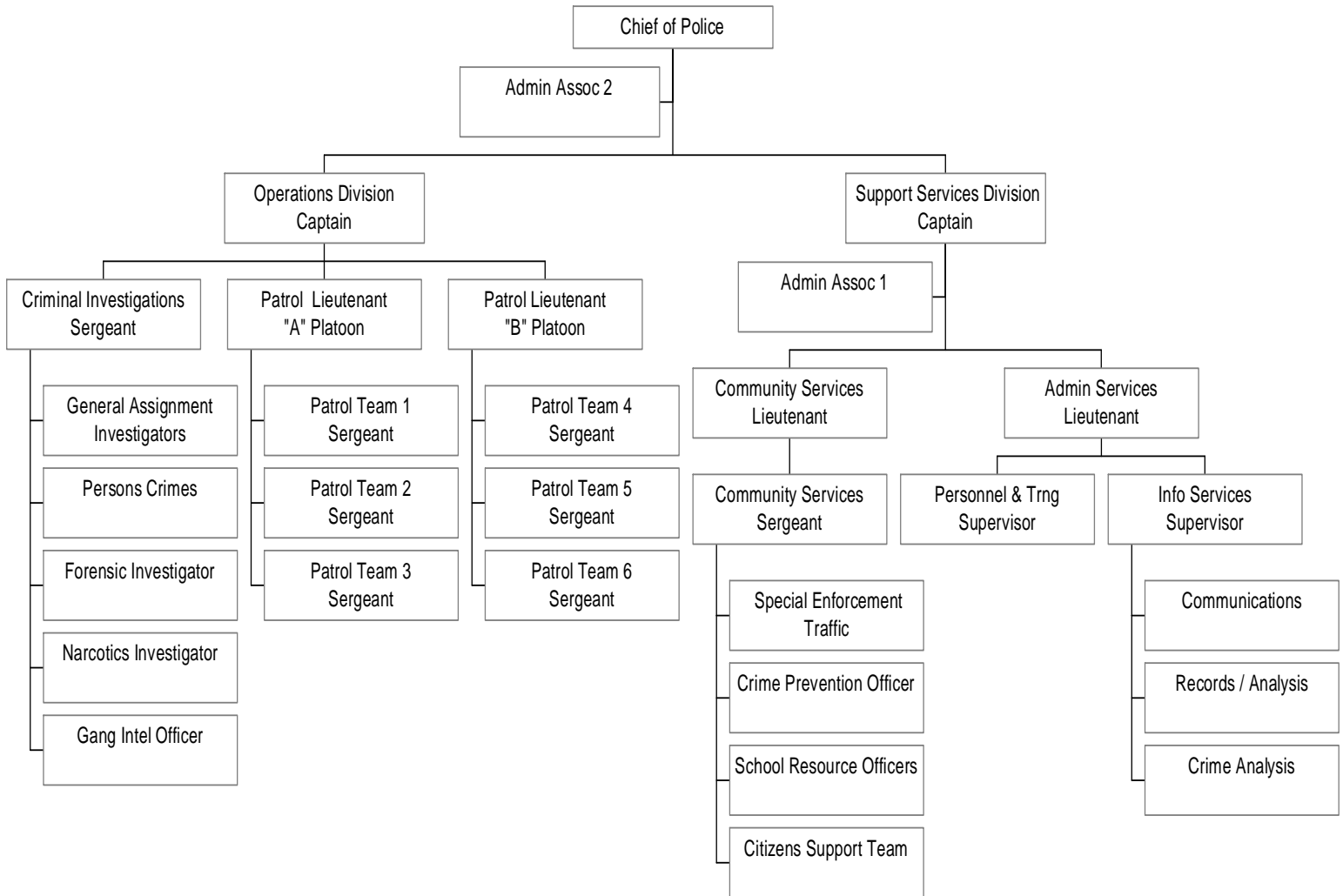
Lastly, I want to thank and commend the members of the Leesburg Police Department for their individual and collective efforts, hard work and contribution throughout the past year that has allowed the Department to fulfill its mission.

Joseph R. Price
Chief of Police

Highlights of 2004 include:

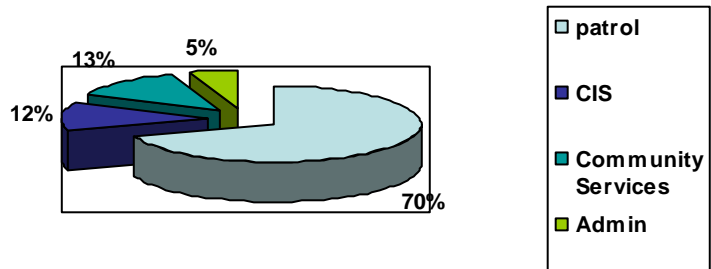
- Maintained a response time (both emergency and non-emergency) better than the national average. 2 minutes and 36 seconds for an emergency / - 5 minutes and 1 second for a non emergency
- Responded to and handled over 50,000 citizen generated calls for service and officer generated activities
- Continued to refine and utilize the Crime and Traffic Accountability Program, a geographic based accountability system designed to identify and track crime trends and hotspots. This system improves crime reduction strategies and internal communication
- Continued with the development of comprehensive department and Town emergency plans to facilitate emergency response and Homeland Security responsibilities. This year efforts were focused on preparation and mitigation.
- Developed new deployment plans to increase both efficiency and effectiveness.
- Continued to play a lead role in the Northern Virginia Regional Gang Task Force
- Initiated Gang Prevention and Education Programs to include web based pamphlets in English and Spanish and began providing the Gang Resistance Education and Training program (GREAT) for all 6th graders attending public school in the town

Organizational Chart - 2004



Officer Deployment

DEMOGRAPHICS
 2004 Population: 35000
 Land Area: 12 Square miles
 Total LPD fulltime employees: 85
 Total Full time Sworn officers: 68
 Officer per 1000 ratio 1.9



Department Awards & Recognition

Department Awards

- The Police Department received the **3rd place award** for agencies our size in the Virginia Chiefs' Challenge sponsored by the Virginia Association of Chiefs of Police and **Honorable Mention** nationally for agencies our size in the Chiefs' Challenge sponsored by the International Association of Chiefs of Police (IACP) and Ford Motor Company. These awards recognize the Department's efforts in a wide range of traffic safety activities conducted throughout the year.
- The Police Department received an **Honorable Mention** for its Volunteer Programs (Citizen's Support Team) and Chief Price was asked to do a presentation on the program at the 111th Session of the International Association of Chiefs of Police (IACP) Convention in Los Angeles.

Employee Commendations

1. Lt. O'Neal H. Stewart Memorial Employee of the Quarter Award

1st Quarter – Sergeant Doug Shaw

2nd Quarter – Officer Matt Hackney

3rd Quarter – Records Technician Christie Alder

4th Quarter – None Awarded

2. Loudoun County Chamber of Commerce Valor Awards

Sgt. Thomas J. Moore

Bronze Medal of Valor

Sergeant Bond D. Shaw

Bronze Medal of Valor

Awarded for valor beyond the call of duty in rescuing a suicidal individual from a rooftop

Police Officer II John Pearson

Lifesaving Medal

Awarded for performing lifesaving action in dislodging a piece of candy from a choking student at Harper Park Middle School

3. Commanders Awards

The Field Operations Division Commander issued 21 Commanders Awards or Certificates of Achievement in cases where an officer or civilian go above and beyond the call of duty or deliver exceptional service. In 2004, the following people were recognized as indicated below.

- Officer Heather Smoke 01-21-2004 Outstanding Investigative Work. Fraud case.

- Officer Matthew Hackney 03-11-2004 Alert Observations and Thorough Investigative effort. Drug seizure and wanted person capture.
- Sergeant Doug Shaw 03-16-2004 Application of Police Intelligence during a traffic stop to recover a stolen vehicle and identify a burglary suspect.
- MPO/Detective Thomas Butler & Sergeant John Smith 03-29-2004 Relentless work in the safe recovery of a missing child.
- Officer Robert Welch & Officer Chris Jones 07-21-2004 Coordinating the Midnight Madness Basketball event capturing the essence of Community Partnerships.
- Officer Joseph Ojeda 08-09-2004 Outstanding Investigative Work.
- Officer Robert Hall 10-17-2004 Outstanding Investigative Work. Recovery of Stolen Vehicle, Crack Cocaine and arrested suspect.
- Ms. Rachel Pollack 11-06-2004 Sustained support through volunteer service as a member of the Leesburg Police Citizens Support Team, Inc.
- Patrol Team 6 11-18-2004 Teamwork, professionalism and perseverance in the administration of justice.
 - Sergeant Doug Shaw
 - Officer Greg Parsons
 - Officer Geoff Gendron
 - Officer Robert Hall
 - Officer Matt Hackney
 - Officer Dale Depoy
- Officer Mike Greene 11-18-2004 Outstanding support through canine team assistance to patrol.
- Officer Matt Bennett 11-19-2004 Exceptional Investigative Work. Drug seizure.
- Officer Joseph Ojeda 12-10-2004 Proactive Investigative work recovery of illegal drugs and drug proceeds.
- Officer Matt Hackney & Officer Wael Abilmona 12-06-2004 Quick thinking, thorough investigation and teamwork to diffuse a potentially dangerous situation and recover an escaped mental patient.

4. **Other Awards**

- Officer Mike Greene and Canine partner *Oszkar* – Outstanding Detector Dog Award for the First Quarter 2004 – United States Police Canine Association – Region III

Citizen Complaints & Use of Force

During calendar year 2004, the Police Department received 16 formal complaints from citizens arising from more than 34,000 recorded citizen contacts. In addition to the citizen complaints, the Department self-initiated 2 complaints. An administrative investigation was initiated in each of the 18 cases. The complaints involved concerns such as improper application of law, improper application of Department policy or procedure, and allegations of misconduct. Following an internal investigation of each incident, 13 of the complaints were found to be unsubstantiated. In 5 cases, an employee was found to have violated department policy and appropriate corrective action and/or discipline was administered.

During 2004, the Leesburg Police Department had over 34,600 documented contacts with citizens, including 1608 criminal arrests, 231 DUI arrests, 4457 traffic tickets and over 26,000 citizen-generated calls for service. In reviewing all recorded contacts for 2004, there was one allegation of excessive use of force by an officer. This allegation was sustained and appropriate corrective action and/or discipline was administered (this data is included in the total number of complaints from above). In 76 cases, the suspect used force to resist a lawful arrest. Five (5) of these cases resulted in officers using a chemical irritant (pepper spray) to gain compliance, two (2) cases involved the use of the ASP baton, seven cases were instances where an officer drew their weapon and in one case tire spikes were used to end a pursuit. In the remaining 61 cases, officers were required to physically subdue the suspect. As a result of the use of force, five (5) suspects received minor injuries and five (5) officers were injured. Additionally, 12 Leesburg police officers were assaulted during 2004 while performing their duties. All use of force incidents are reviewed and analyzed. The purpose of the analysis is to carefully monitor the use of force, keep all members informed of any trends concerning resistance by arrestees and to reinforce the use of sound officer safety and arrest techniques. The analysis of officer applied force aids in identifying potential training needs and serves to minimize officer injuries. Most importantly, a comprehensive review serves to ensure that only reasonable force is used to achieve lawful enforcement objectives.

Criminal Activity

During calendar year 2004, total crime occurrences in Leesburg rose by about 4.7%. However, serious crime (group A) fell by 3% and violent crime (defined by FBI as murder, robbery, forcible rape and aggravated assault) fell by 49%. There was also a decrease in indexed crime (occurrences of crime per 100,000 population) of about 12%. Property related crimes, in particular larcenies and destruction of property accounted for the largest categories of criminal activity in 2004.

*Crimes by Types (*Includes attempts)*

| | 2002 | 2003 | 2004 |
|--------------------------------------|------|------|------|
| Murder | 2 | 1 | 0 |
| Rape* | 12 | 15 | 13 |
| Robbery* | 22 | 16 | 11 |
| Aggravated Assaults | 44 | 57 | 27 |
| Burglary* | 60 | 81 | 74 |
| Larceny* | 759 | 812 | 738 |
| Motor Vehicle Thefts* | 52 | 58 | 43 |
| Vandalism / Destruction of Property* | 459 | 422 | 342 |

While it is our primary goal to prevent crime from ever happening, the department prides itself on its ability to conduct effective and efficient investigative follow ups of reported criminal activity and to bring the case to closure. For serious offenses (see below) during 2004 the department had a closure rate of 25% compared to a national average of about 20%.

Number of Closures in Specific Crime Categories

| | 2002 | 2003 | 2004 | closure rate |
|----------------------|------|------|------|--------------|
| Murder | 0 | 1 | 0 | N/A |
| Rape | 10 | 13 | 11 | 84.6% |
| Robbery | 8 | 9 | 7 | 63.6% |
| Aggravated Assaults | 28 | 32 | 20 | 74% |
| Burglary | 8 | 18 | 18 | 24% |
| Larceny | 133 | 176 | 160 | 22% |
| Motor Vehicle Thefts | 16 | 20 | 13 | 30% |

Criminal Investigations Section

The Criminal Investigations Section investigates a large number of serious offenses (Group A) and also investigates a number of other crimes (Group B) such as forgery, fraud, embezzlement, vice offenses, offenses against the family and children, etc.

Criminal Investigations Section clearance rate of assigned cases

| | 2002 | 2003 | 2004 |
|------------------|------|------|------|
| # cases assigned | 400 | 396 | 271 |
| # cases cleared | 218 | 231 | 107 |
| % cases cleared | 55 | 58 | 39 |

Patrol Section Activity

The primary responsibilities of the Patrol Section are to respond to reported criminal activities, conduct motor vehicle accident investigations, maintain consistent enforcement of traffic and criminal laws and work proactively to partner with the community in a joint effort to improve the quality of life in Leesburg. These activities help to maintain and promote highway safety for motorists and pedestrians alike.

Enforcement activities also serve to maintain the Town's excellent quality of life for its residents and the business community.

Responsiveness to neighborhood complaints about traffic and quality of life issues was a significant focus of the Patrol Section in the year 2004.

| Arrest/Citations | 2002 | 2003 | 2004 |
|------------------|------|------|------|
| Traffic | 5792 | 5287 | 4457 |
| Criminal | 1441 | 1437 | 1608 |
| DUI | 229 | 232 | 231 |
| Parking | 1698 | 2578 | 2387 |



Calls for Police Service: 2002 - 2004

Citizen calls for police service decreased by 1492 calls in 2004. The number of calls received reflects a 5.4 percent decrease.

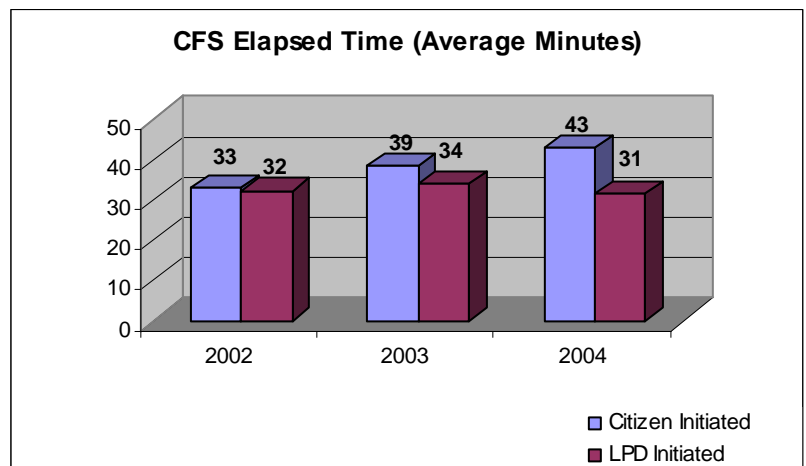
As part of its community policing philosophy the Department strives towards efficient community policing and encourages the community to call the police for any suspicious activity.

Officers are expected to take proactive steps within the assigned areas and at special enforcement locations in order to address locations experiencing crime activity and to take proactive action in addressing quality of life issues within the community. In 2004 officer generated activity increased by almost 20%.



| Activity | 2002 | 2003 | 2004 | % change |
|--------------------------|-------|-------|-------|----------|
| Calls for Service | 24800 | 27768 | 26276 | -5.4% |
| Officer Generated | 21900 | 20327 | 24379 | +19.9% |
| Total | 46700 | 48095 | 50655 | +5.3% |
| Quality of life projects | 1122 | 1496 | 1406 | -6% |

The amount of time that an officer spends on citizens initiated calls increased by about 10% to an average of 43 minutes per call.

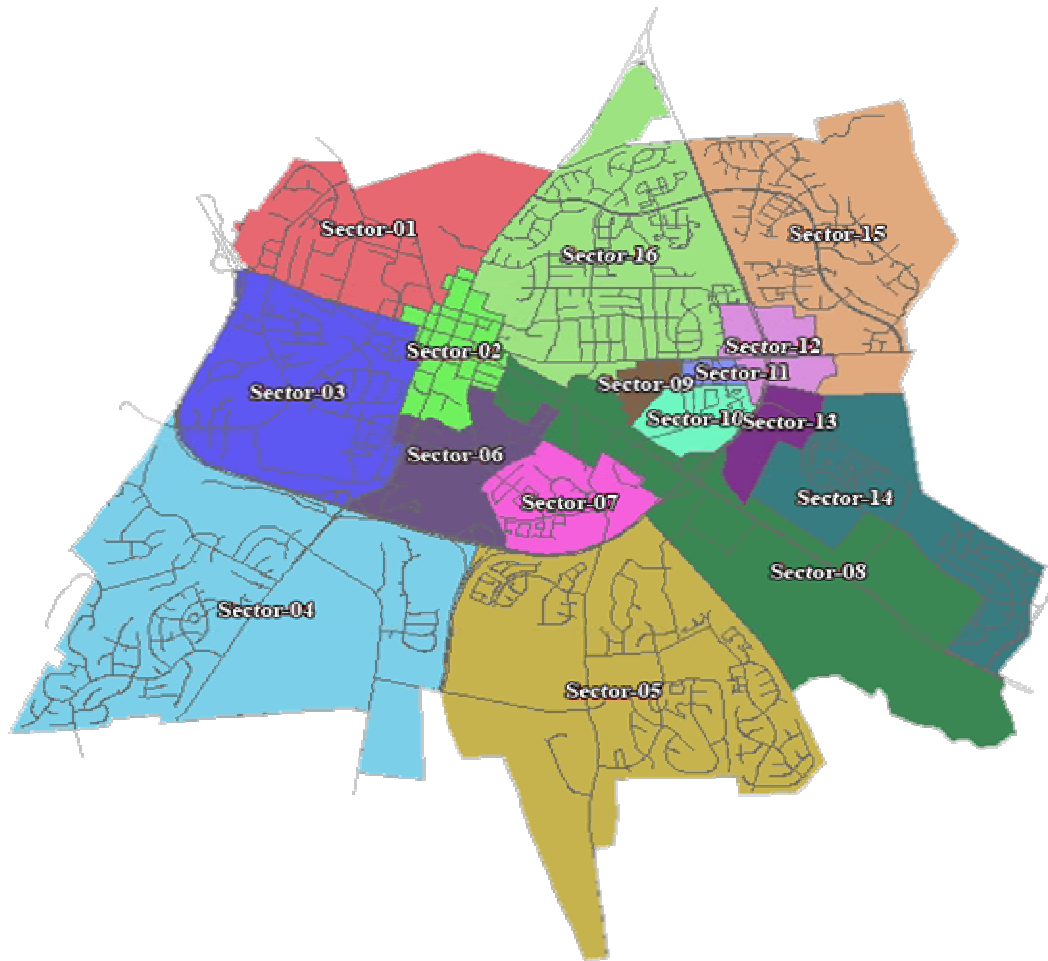


Community Policing



Community policing is the operational philosophy of the Leesburg Police Department. In simple terms it means that every member of the department, sworn and non-sworn, subscribes and follows the principles of community policing in carrying out their assigned duties. The Department is committed to work in partnership with the community to solve problems and prevent crime. To facilitate this philosophy and build strong partnerships, the department has established 16 community policing sectors within the town. Sectors are reflective of neighborhoods throughout the town and where possible, homogenous linkage (commercial to commercial; residential to residential) has been used in establishing the sectors. Each sector has at least one officer assigned for accountability. That officer is required to monitor activities within their sector, develop partnerships with their assigned communities and develop and implement programs to address criminal activity and improve the quality of life. Citizens can locate their neighborhood on the map below and determine which sector they live/work in. The second chart lists the officers assigned to the sectors. Citizens are encouraged to communicate directly with their assigned officers, and to invite the community policing sector officers to community meetings and other events. Officers can be reached by calling 703-771-4500.

Community Policing Sectors



| Sector | Officer | | Sector | Officer |
|--------|------------------------------|--|--------|---------------------------|
| 1 | N. Martin | | 9 | M. Davis J. Ojeda |
| 2 | M. Bennett | | 10 | B. Thompson M. Greene |
| 3 | V. Mertz-Myers M. Hackney | | 11 | R. Welch C. Jones |
| 4 | P. Holzerland B. Russell | | 12 | E. Warf S. Kozup |
| 5 | C. Harmison | | 13 | J. Marsten D. Depoy |
| 6 | H. Smoke | | 14 | W. Abilmona T. Lotz |
| 7 | G. Gendron C. Loran | | 15 | J. Turner M. Manocchio |
| 8 | C. Smith G. Ascunce | | 16 | W. Harrison B. Hall |

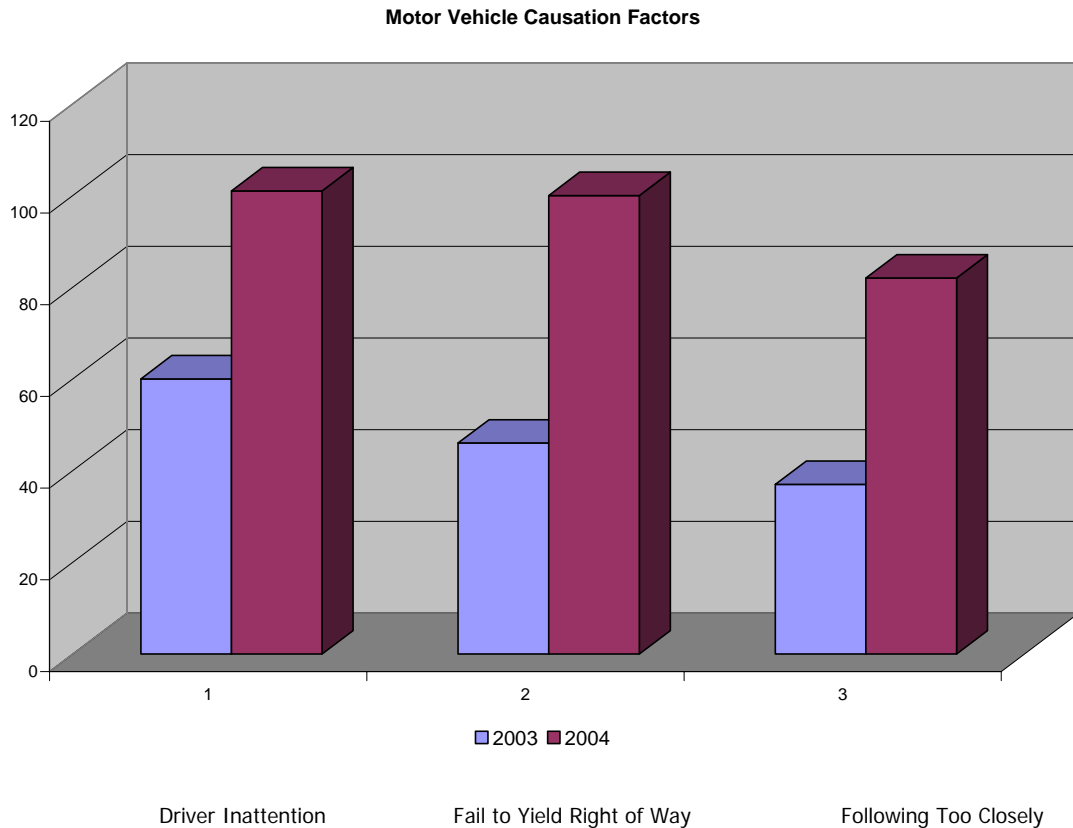
Traffic Activity 2002 through 2004

- The Town of Leesburg saw a 14% increase in reportable accidents, 581 in 2004 compared to 509 in 2003. There were two fatal accidents in 2004. The number of injury accidents increased by 5.1% (from 157 to 165), and alcohol related accidents decreased by 52% (25 to 12). Accidents involving pedestrians were down from 9 to 5 in 2004.

- There were 533 non-reportable accidents* during 2004, an increase of 7.4% over 2003.

**A non-reportable accident is defined as an accident with less than \$1,000 of combined property damage and no personal injuries. Accidents that occur on private property are also considered non-reportable.*

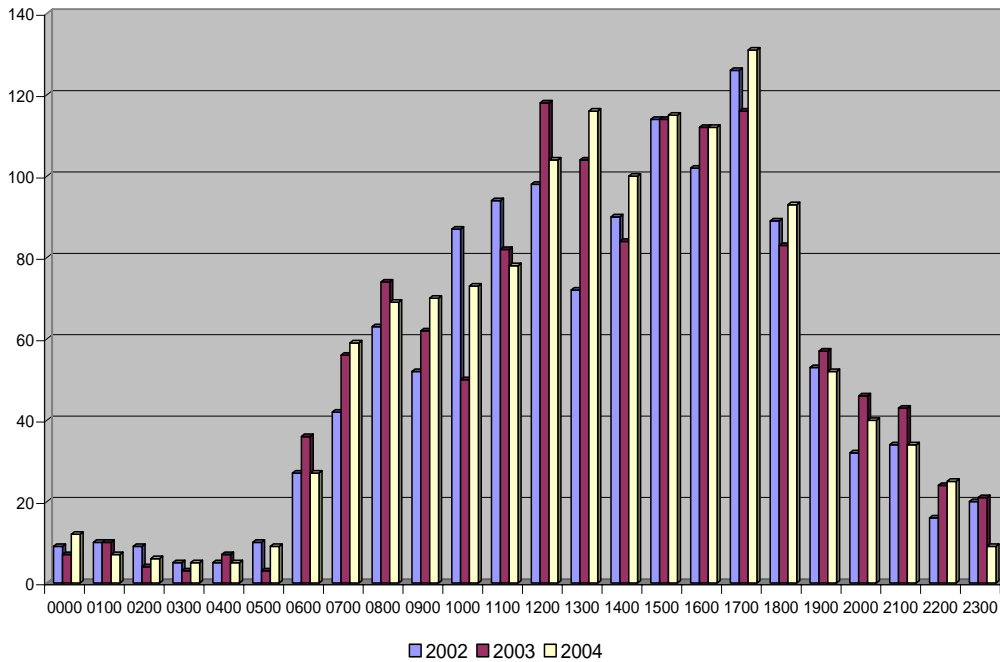
- Driver Inattention, Fail to Yield Right of Way and Following Too Closely were the most frequent cause of vehicle crashes.



Accident Data

| Type | 2001 | 2002 | 2003 | 2004 | Change |
|----------------------------|------|------|------|------|--------|
| Fatal Accidents | 0 | 1 | 2 | 2 | 0 |
| Injury Accidents | 144 | 134 | 157 | 165 | 5.1% |
| Total Reportable Accidents | 488 | 468 | 509 | 581 | 14% |
| Non-Reportable | 448 | 486 | 496 | 533 | 7.46% |
| Total All Accidents | 1079 | 1095 | 1147 | 1281 | 11.68% |
| Alcohol Related Accidents | 23 | 21 | 25 | 12 | -52% |
| Hit And Run | 203 | 224 | 222 | 249 | 12.16% |
| Pedestrian Crashes | 10 | 9 | 9 | 5 | -44.4% |

**Motor Vehicle Accidents
By Hour of Day**



Traffic Management

| Activity | 2002 | 2003 | 2004 | % change |
|---|--------------------------------|--------------------------------|--------------------------------|----------------|
| Special enforcement activity (in hours) | 329.15 (406 Summons Issued) | 268.75 (371 Summons Issued) | 526.98 (467 summons Issued) | 95% (25.8%) |
| Funerals | 98 | 85 | 97 | 14% |
| Traffic control details | 54 | 71 | 48 | -32 % |



Intersections with the highest number of accidents:

| | <u>Number</u> | <u>Location</u> |
|----------------------------|---------------|--------------------------------------|
| Calendar Year 2004: | | |
| | 40 | East Market St @ Cardinal Park DR SE |
| | 38 | Leesburg Bypass @ Sycolin RD SE |
| | 24 | S. King St @ Leesburg Bypass |
| | 23 | Leesburg Bypass @ East Market ST |
| | 22 | Leesburg Bypass @ Battlefield PKWY |
| Calendar Year 2003: | | |
| | 33 | Sycolin Road @ Leesburg Bypass |
| | 28 | East Market St @ Plaza Street, NE |
| | 24 | East Market St @ Leesburg Bypass |
| | 23 | East Market St @ Rivercreek Parkway |
| | 22 | South King St @ Leesburg Bypass |

| | | |
|----------------------------|----|--|
| Calendar Year 2002: | 32 | Cardinal Park Drive @ E. Market Street |
| | 29 | Sycolin Road @ Leesburg Bypass |
| | 22 | East Market St @ Rivercreek Parkway |
| | 21 | South King St @ Leesburg Bypass |
| | 21 | Edwards Ferry Road @ Leesburg Bypass |

Community/ Volunteer Involvement

During 2004, the department and community continued to benefit from the dedication and support provided by the Leesburg Police Citizen Support Team. These dedicated citizen volunteers provide tremendous support in areas such as special events, traffic control, searching for missing persons and community safety events.

Special Events

| | |
|--|----------|
| Number of man-hours needed for crowd / traffic control at special events | 28,000 |
| Number of police staff hours replaced by Support Team staff hours | 1,600 |
| Money saved in police or other town operating budget | \$42,000 |



Community Patrol

| | |
|--|--------|
| Number of staff hours needed for Specified proactive patrol activities | 15,000 |
| Number of police staff hours replaced By Support Team staff hours | 1,000 |
| Number of patrol FTEs replaced By support team | .67 |



Pictured above: Members of the Leesburg Citizen Support Team next to their patrol car in front of the Leesburg Police Station.