



TOWN OF LEESBURG, VIRGINIA

25 WEST MARKET STREET  
LEESBURG, VA 20178

LEESBURG CENTRAL  
MAINTENANCE FACILITY  
FUEL ISLAND UPGRADE

100% SUBMITTAL

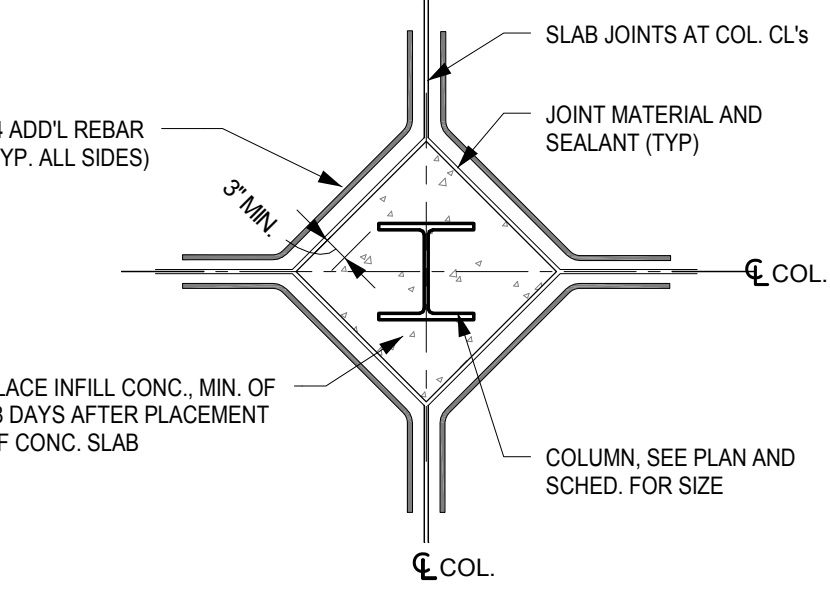
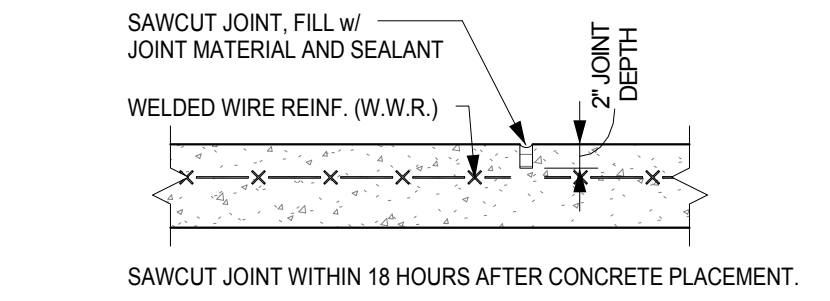
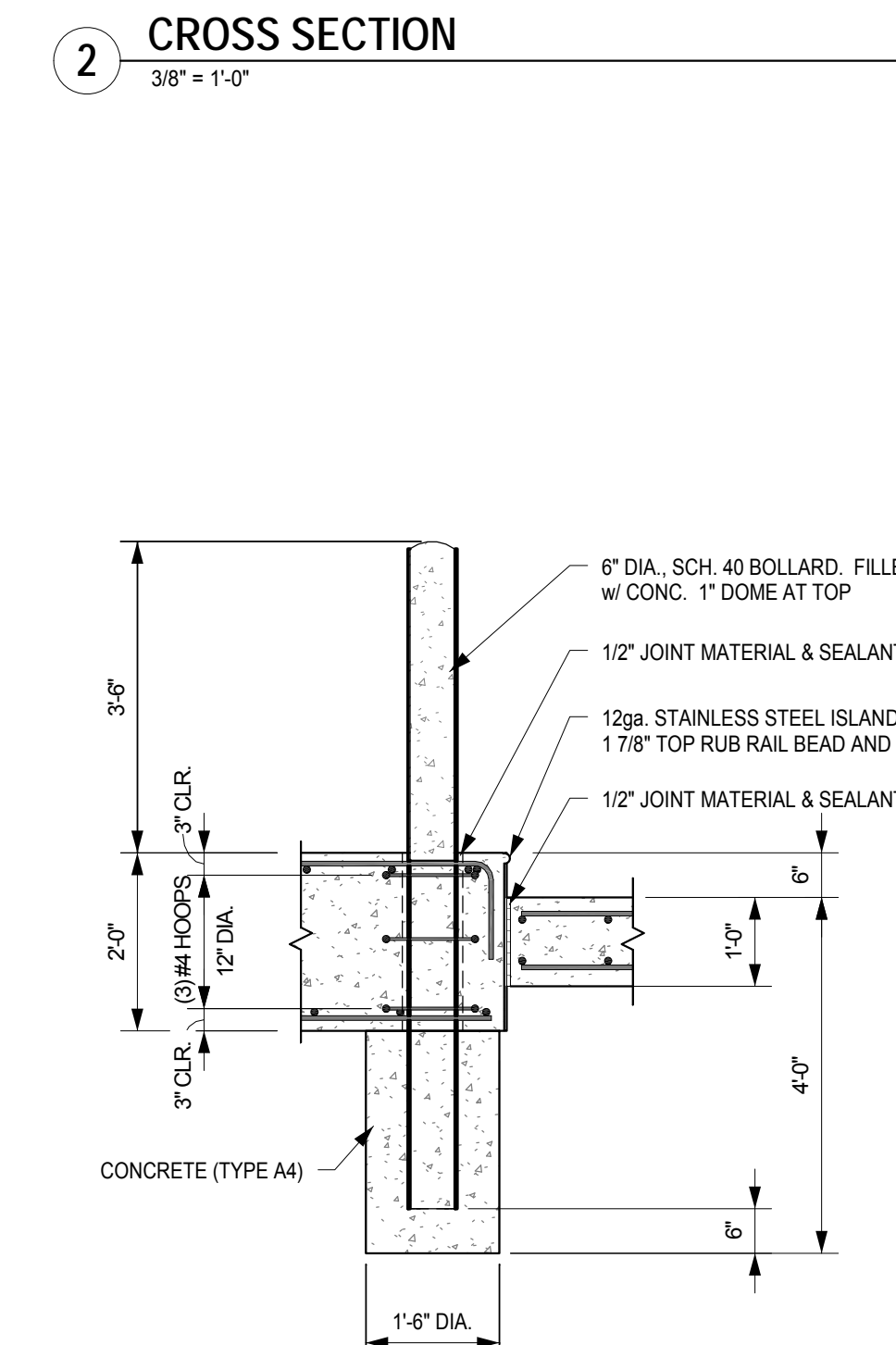
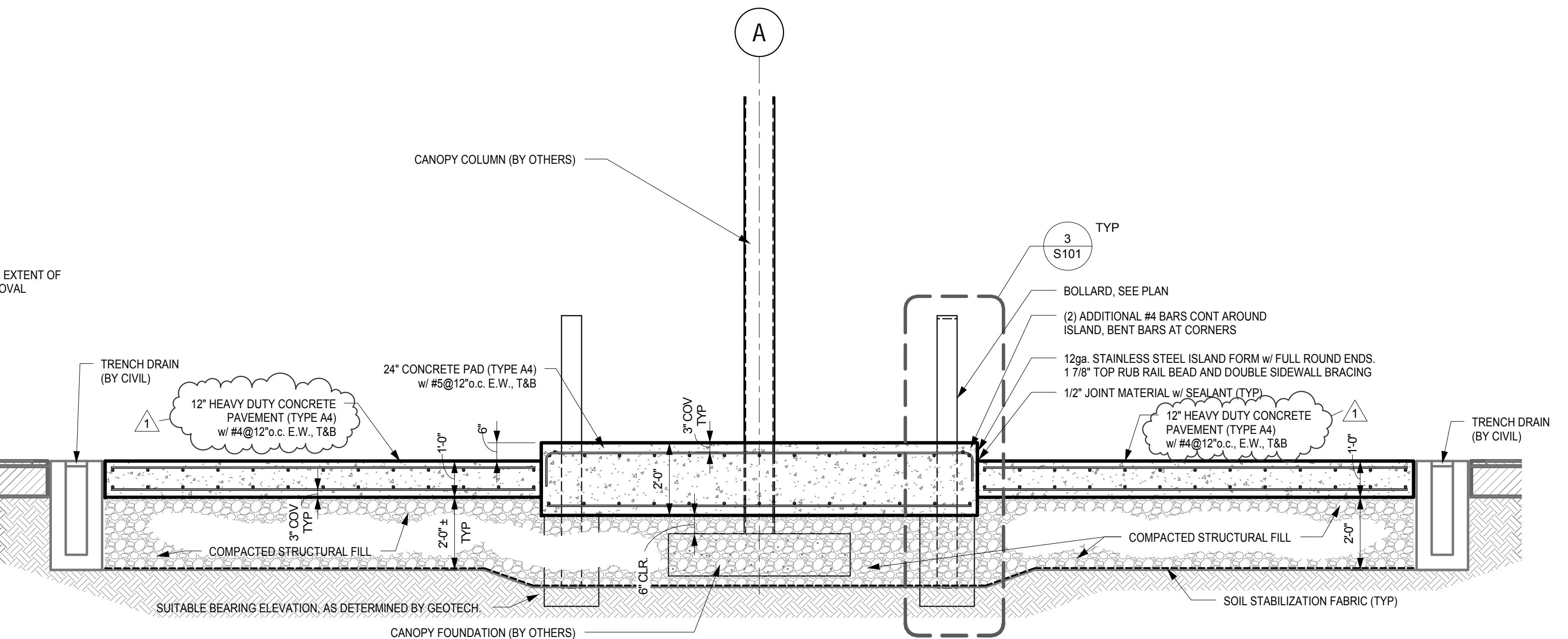
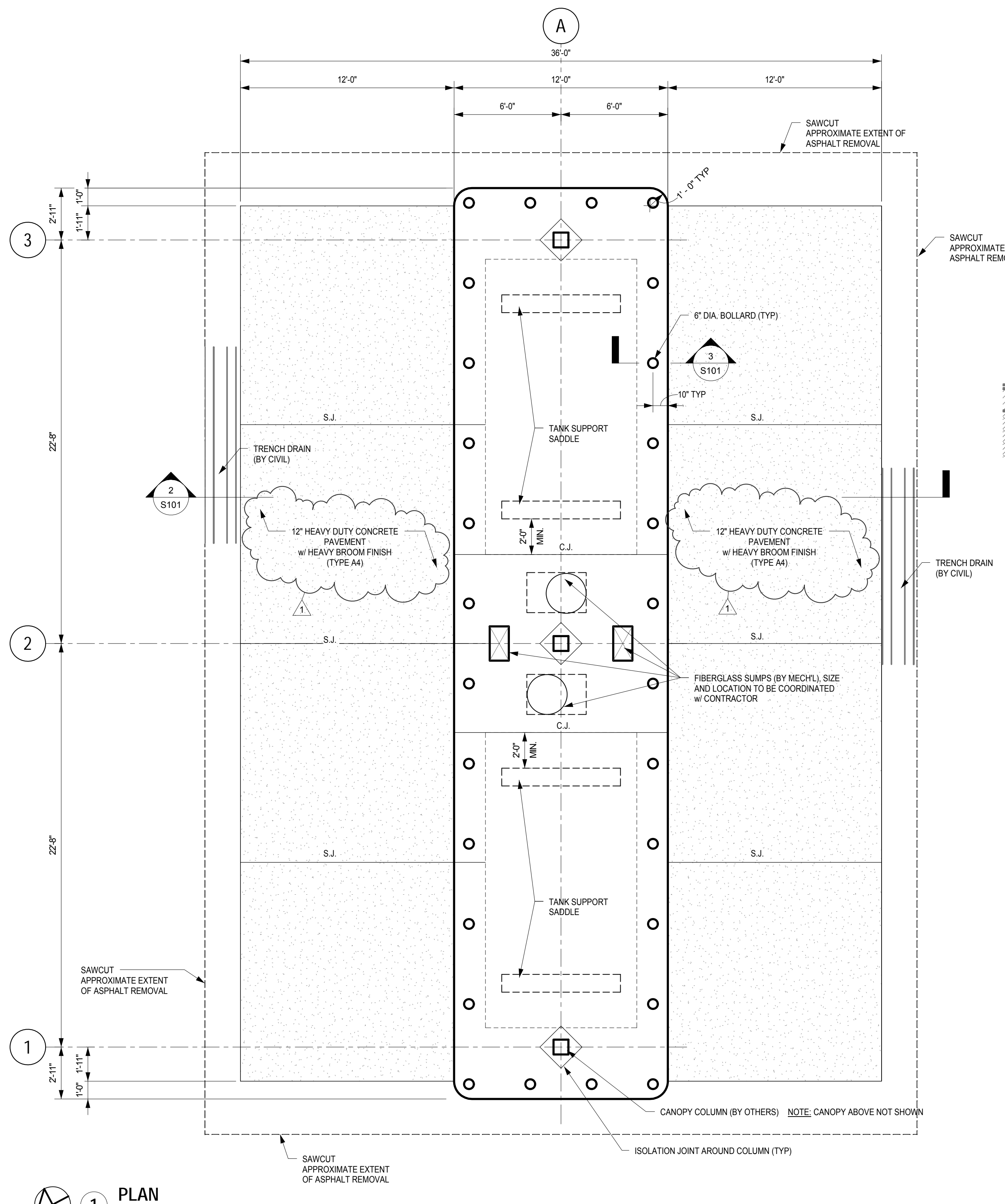


1420 King Street, Suite 510  
Alexandria, VA 22314  
www.wendelcompanies.com  
p.703.299.8718 f.703.299.8719

ARCHITECTURE • ENGINEERING • PLANNING  
ENERGY SERVICES • CONSTRUCTION MANAGEMENT



NOTE:  
THIS DOCUMENT AND THE IDEAS AND DESIGNS INCORPORATED HEREIN AS AN INSTRUMENT OF PROFESSIONAL SERVICE IS THE PROPERTY OF WENDEL DUCHSCHERER AND IS NOT TO BE USED IN WHOLE OR IN PART FOR ANY OTHER PROJECT WITHOUT THE WRITTEN AUTHORIZATION OF WENDEL DUCHSCHERER. UNAUTHORIZED ALTERATION OR ADDITION TO ANY SURVEY DRAWING, DESIGN, SPECIFICATION, PLAN OR REPORT IS A VIOLATION OF SECTION 7029, PROVISION 2 OF THE NEW YORK STATE EDUCATION LAW.



1	ADDENDUM #	5/24/11
REV NO	BY	DATE
	GESC	

DWG. TITLE

FUEL ISLAND PLAN AND SECTIONS

DATE	04/29/2011
SCALE	As indicated
DWN	WHM
CHK	CMA/JAB
PROJ. No.	437103
DWG. No.	

S101