



TOWN OF LEESBURG, VIRGINIA

25 WEST MARKET STREET, P.O. BOX 88, LEESBURG, VA 20178

LEESBURG CENTRAL MAINTENANCE FACILITY FUEL ISLAND UPGRADE

100% SUBMITTAL

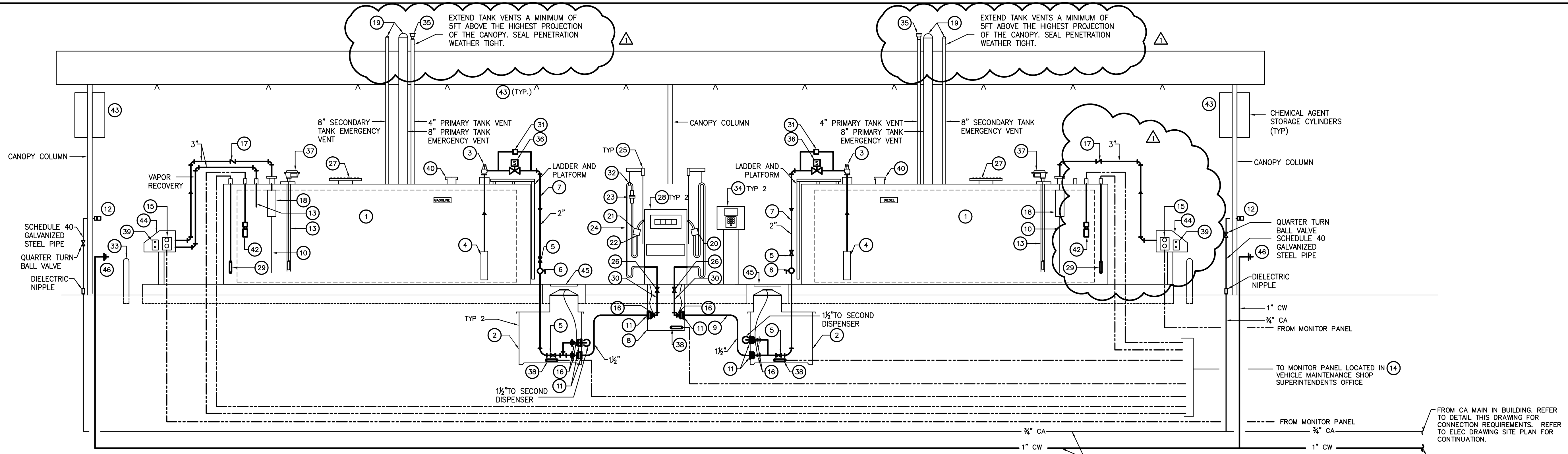


1420 King Street, Suite 510 Alexandria, VA 22314 www.wendelcompanies.com p:703.299.8718 f:703.299.8719

ARCHITECTURE • ENGINEERING • PLANNING ENERGY SERVICES • CONSTRUCTION MANAGEMENT



NOTES THIS DOCUMENT AND THE IDEAS AND DESIGN INCORPORATED HEREIN, AS AN INSTRUMENT OF PROFESSIONAL SERVICE, IS THE PROPERTY OF RK&K ENGINEERING AND IS NOT TO BE USED IN WHOLE OR IN PART, FOR ANY OTHER PROJECT WITHOUT THE WRITTEN APPROVAL OF RK&K ENGINEERING. UNAUTHORIZED ALTERATION OR ADDITION TO ANY SURVEY, DRAWING, DESIGN, SPECIFICATION, PLAN OR REPORT IS A VIOLATION OF SECTION 7209, PROVISION 2 OF THE NEW YORK STATE EDUCATION LAW.



1 FUEL DISPENSING SCHEMATIC SCALE: NONE

MECHANICAL SYMBOLS - PIPING DESIGNATIONS AND VALVES

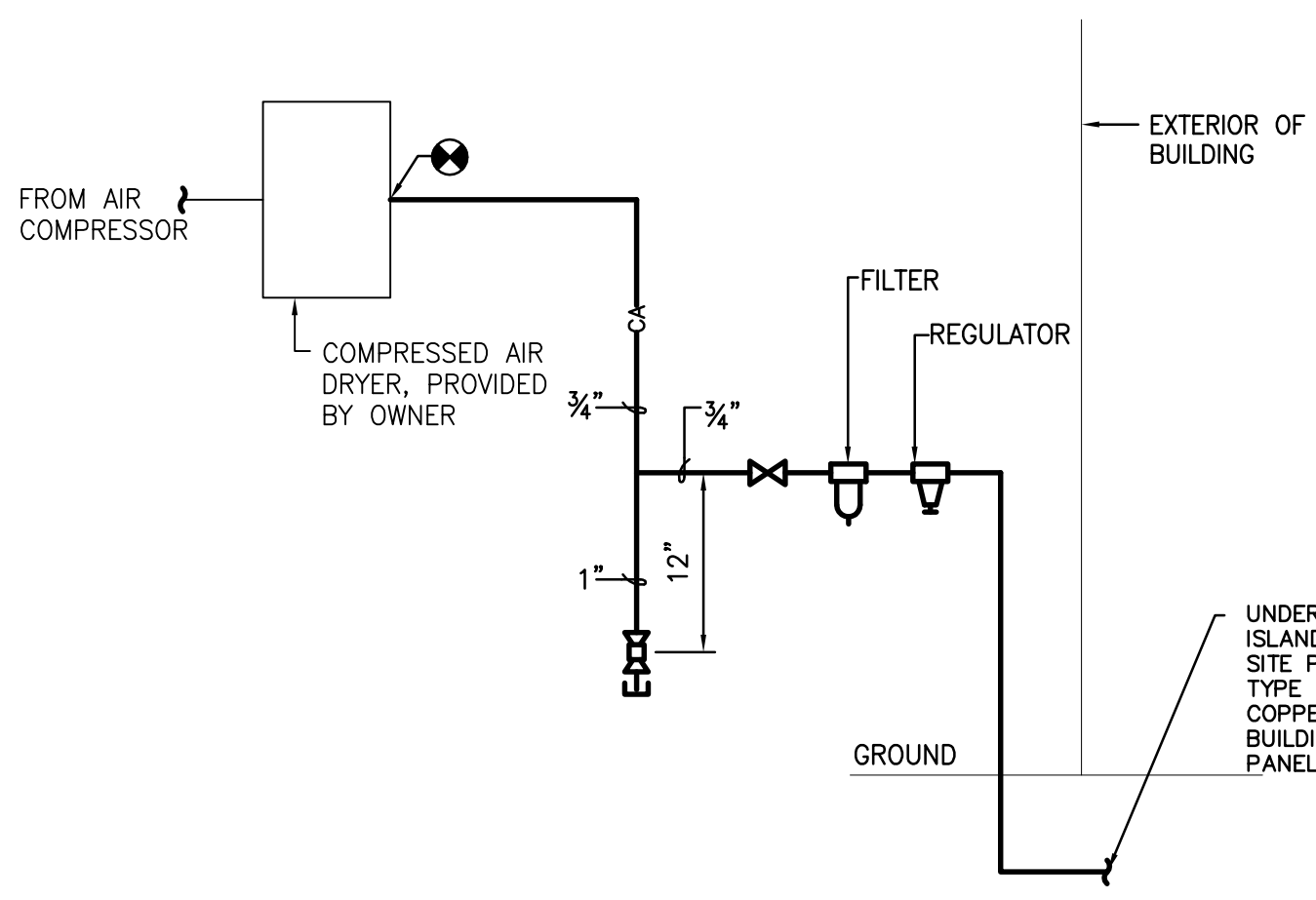
- EXISTING PIPING (REFER TO DESIGNATIONS BELOW FOR TYPE)
PIPING TO BE REMOVED (REFER TO DESIGNATIONS BELOW FOR TYPE)
GAS
COMPRESSED AIR
COLD WATER
POINT OF CONNECTION/DISCONNECTION
SHUT-OFF VALVE (GATE, BALL, ETC.)
BRANCH CONNECTION - BOTTOM
BRANCH CONNECTION - TOP
ELBOW - TURNED DOWN
VALVE IN RISER/BRANCH PIPING
ELBOW - TURNED UP
CAP
DIRECTION OF FLOW
REDUCER

- 1 6,000 GALLON STEEL PROTECTED ABOVEGROUND STORAGE TANK
2 8" SECONDARY TANK EMERGENCY VENT
3 ANTI-SIPHON VALVE
4 1/3 HP SUBMERSIBLE PUMP
5 FULL PORT TWO-WAY BALL VALVE
6 EMERGENCY SHUT-OFF VALVE
7 METALLIC PIPE
8 LARGE MOUTH FIBERGLASS DISPENSER SUMPS
9 1 1/2" SECONDARILY CONTAINED PRESSURE PIPING
10 DROP TUBE
11 BOLTED FLEXIBLE ENTRY BOOT
12 COMPRESSED AIR HOSE COUPLER
13 DROP TUBE
14 INVENTORY CONTROL AND LEAK DETECTION MONITOR PANEL
15 SINGLE OVERFILL TANK ALARM
16 1 1/2" SWIVEL BOLT ON COUPLING
17 SWING CHECK VALVE
18 OVERFILL PREVENTION VALVE
19 EMERGENCY VENT
20 3/4" PRESSURE ACTIVATED AUTOMATIC SHUT-OFF NOZZLES
21 3/4" PRESSURE ACTIVATED AUTOMATIC SHUT-OFF NOZZLES FOR UNLEADED GASOLINE
22 3/4" HOSE SWIVEL
23 3/4" RECONNECTABLE BREAKAWAY
24 3/4" HOSE ASSEMBLY INCLUDING CURB AND WHIP HOSE
25 OVERHEAD SPRING BALANCED HOSE RETRACTORS KIT
26 EMERGENCY SHUT-OFF SHEAR VALVE
27 MANWAY COVER
28 TWIN TWO-PRODUCT COMMERCIAL DISPENSER
29 INTERSTITIAL SENSOR
30 BRAIDED STAINLESS STEEL FLEX CONNECTOR
31 THERMAL PRESSURE RELIEF VALVE
32 1" HOSE CLAMP
33 CONCRETE BOLLARD
34 KEY OPERATED FUEL MANAGEMENT SYSTEM
35 ATMOSPHERIC VENT
36 SOLENOID VALVE
37 MECHANICAL TANK GAUGE
38 LEAK DETECTION SUMP SENSOR
39 ALARM ACKNOWLEDGEMENT SWITCH
40 CAP SPARE CONNECTIONS
41 EMERGENCY SHUT-OFF SWITCH
42 MAGNETOSTRICTIVE INVENTORY MEASUREMENT PROBE
43 DRY CHEMICAL FIRE EXTINGUISHING SYSTEM
44 REMOTE-FILL SPILL CONTAINER
45 PROVIDE MANHOLE IN CONCRETE SLAB
46 BACKFLOW PROTECTED AUTOMATIC DRAINING FREEZELESS SANITARY YARD HYDRANT

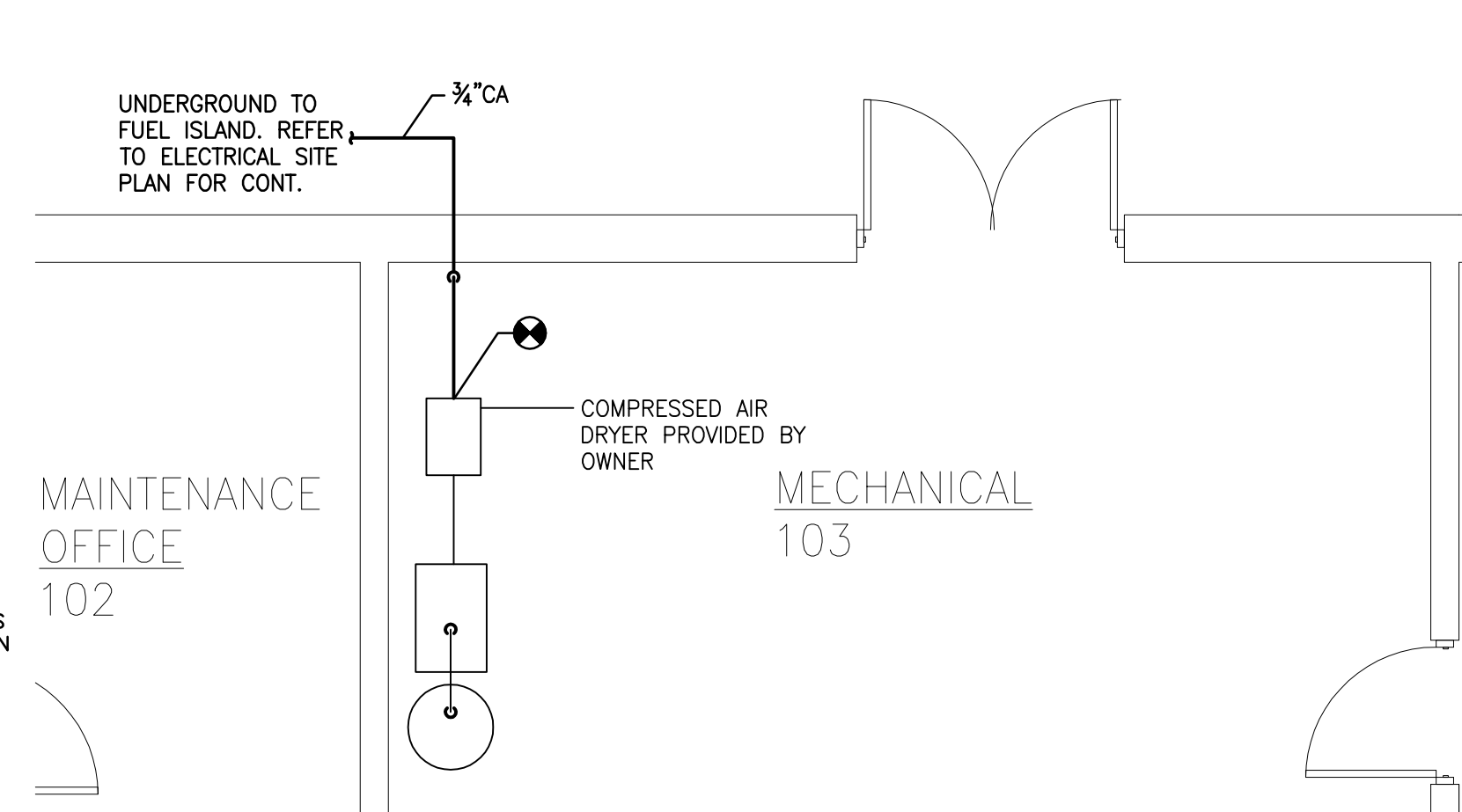
GENERAL NOTES FOR FUEL STORAGE:

- 1. PROVIDE CONDUIT AND WIRING TO ACCOMMODATE POWER AND CONTROL REQUIREMENTS IN ORDER TO PROVIDE A COMPLETE SYSTEM.
2. INSTALL SYSTEM PER NFPA 30 REQUIREMENTS.
3. INSTALL SYSTEM PER MANUFACTURERS RECOMMENDATIONS.
4. PROVIDE ALL CONTROL EQUIPMENT NOT SHOWN ON DRAWINGS OR SPECIFIED TO PROVIDE A COMPLETE SYSTEM.
5. ALL CONTROL EQUIPMENT LOCATIONS ARE APPROXIMATE, CONTRACTOR TO VERIFY EXACT LOCATION WITH OWNER.
6. ALL VENTS FOR FUEL TANK TO EXTEND A MINIMUM OF 12'-0" ABOVE GRADE.
7. MANUFACTURERS AND MODEL NUMBERS INDICATED ARE BASIS OF DESIGN. REFER TO SPEC SECTIONS FOR EQUIVALENTS.
8. PROVIDE FLEXIBLE ENTRY BOATS FOR ALL SUMP PENETRATIONS, INCLUDING PIPING AND CONDUIT.
9. INSTALL TO VIRGINIA CODE AND NFPA REQUIREMENTS.
10. PROVIDE GROUND FROM EACH TANK TO GROUNDING GRID. REFER TO DRAWING E100.

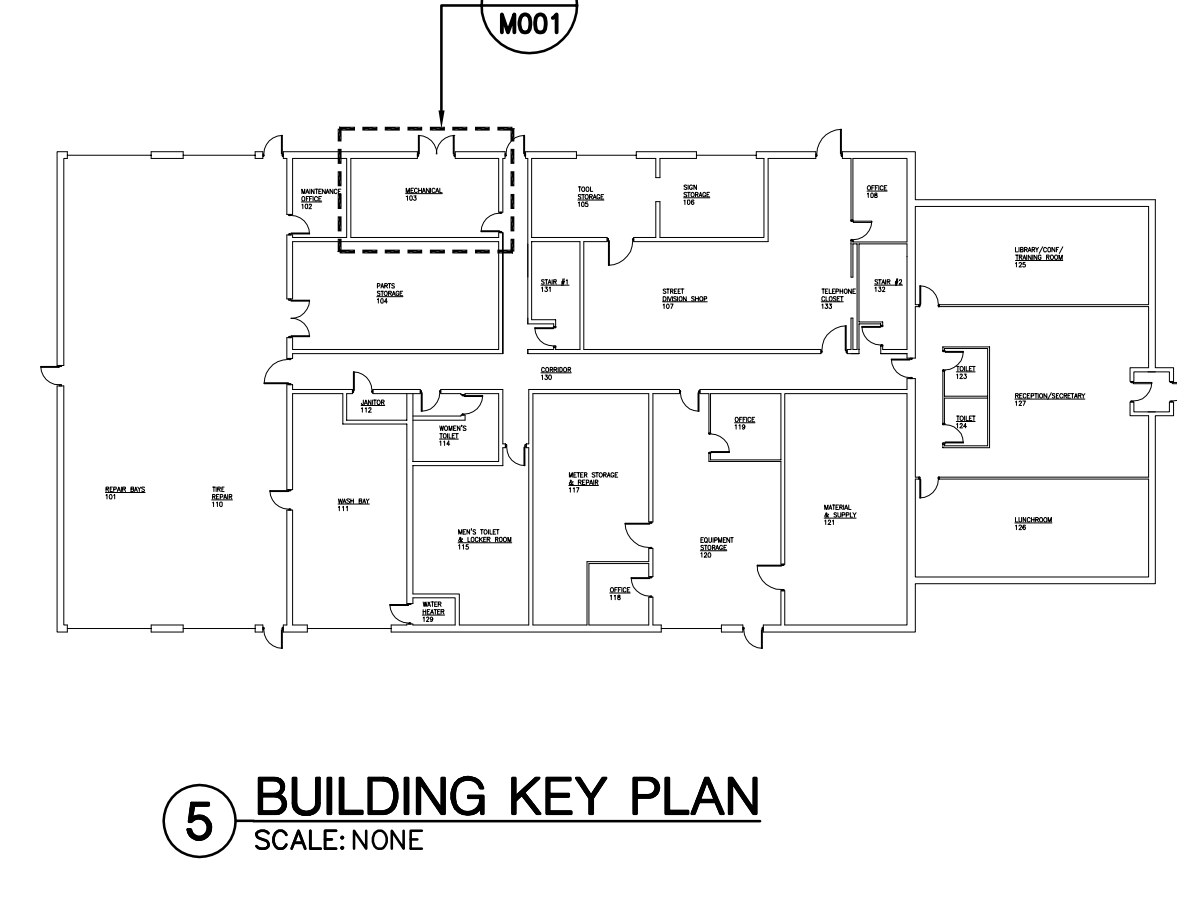
2 FUEL DISPENSING EQUIPMENT LIST SCALE: NONE



3 COMPRESSED AIR CONNECTION DETAIL SCALE: NONE



4 MECHANICAL ROOM 103 SCALE: NONE



5 BUILDING KEY PLAN SCALE: NONE

04-24-2011 CCA_P:\31703_LEESBURG_DFWA\16_CAD\DWG\PLANS\COMPOSITE\FUEL_ISLAND.DWG

Table with columns: NO., BY, REVISIONS, DATE. Row 1: 1, MAD/CA, ADDENDUM #4, 5/24/11.

DWG. TITLE FUEL ISLAND SCHEMATIC

Table with columns: DATE, SCALE, DWN., PROJ. No., DWG. No. Row 1: 04/29/11, AS NOTED, CCA, 437103, M001.

M001