

TOWN OF
LEESBURG, VIRGINIA

25 WEST MARKET STREET,
P.O. BOX 88,
LEESBURG, VA 20178

CENTRAL WAREHOUSE &
MAINTENANCE FACILITY

FUEL ISLAND
UPGRADE



10306 EATON PLACE
WILLOWOOD II, SUITE 240
FAIRFAX, VA 22030
(P) 703 246-0028
(F) 703 246-0123



1420 King Street Suite 510
www.wendelcompanies.com
p:703.299.8718 f:703.299.8719

ARCHITECTURE • ENGINEERING • PLANNING
ENERGY SERVICES • CONSTRUCTION MANAGEMENT

PROGRESS
PRINT 100%
May 13, 2011
NOT FOR
CONSTRUCTION

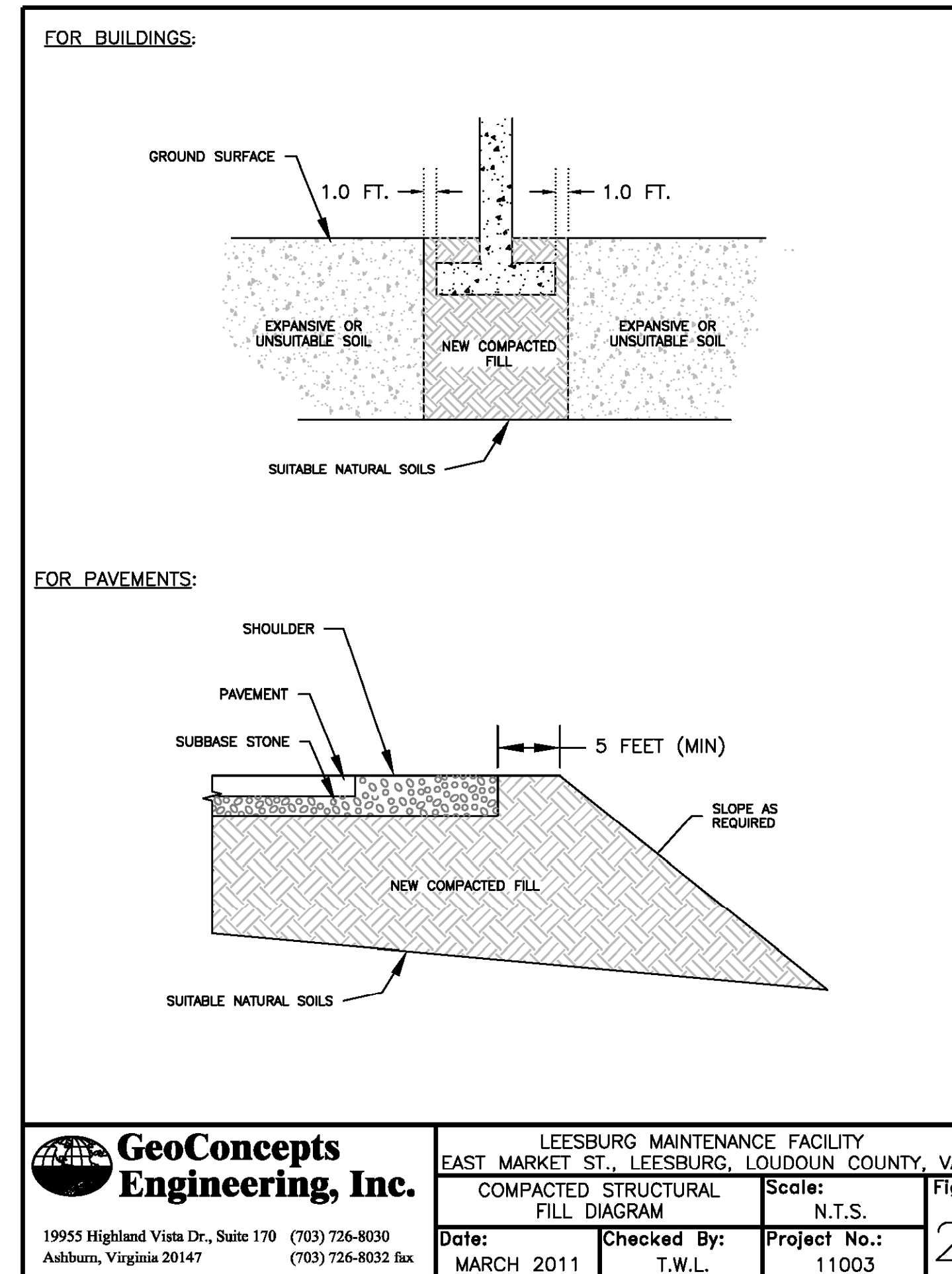
NOTES
THIS DOCUMENT AND THE IDEAS AND DESIGN INCORPORATED HEREIN, AS AN INSTRUMENT OF PROFESSIONAL SERVICE, IS THE PROPERTY OF WENDEL, LLC/ENGINEER AND IS NOT TO BE REPRODUCED OR IN ANY MANNER, FOR ANY OTHER PROJECT WITHOUT THE WRITTEN APPROVAL OF WENDEL, LLC/ENGINEER.
UNAUTHORIZED ALTERATION OR ADDITION TO ANY SURVEY, DRAWING, DESIGN, SPECIFICATION, PLAN OR REPORT IS A VIOLATION OF SECTION 7209, PROVISION 2 OF THE NEW YORK STATE EDUCATION LAW.

NO.	REVISIONS	DATE

GEOTECHNICAL
INFORMATION

DATE	04/29/11
SCALE	N/A
DWN.	KAB
CHK.	WSS
PROJ. No.	
DWG. No.	

G001



A COPY OF THE GEOTECHNICAL
REPORT CAN BE OBTAINED UPON
REQUEST TO THE ENGINEER
(RK&K) OR THE TOWN

guidance on how to obtain geotechnical report
provided in lieu of adding additional excerpts to
sheet

Geotechnical Engineering Report
Town of Leesburg
Maintenance Facility
Leesburg
Loudoun County, Virginia

GeoConcepts Engineering, Inc.
19955 Highland Vista Drive, Suite 170, Ashburn, Virginia 20147
703-726-8030 • Fax 703-726-8032 • www.geoconcepts-eng.com

GeoConcepts Engineering, Inc.
19955 Highland Vista Dr., Suite 170 Ashburn, Virginia 20147
(703) 726-8030
www.geoconcepts-eng.com

May 24, 2011
Mr. Bill Springer, PE
RK&K
10306 Eaton Place, Ste. 240
Fairfax, VA 22030

Subject: Review of Drawings, Town of Leesburg Maintenance Facility, Leesburg, Loudoun County, Virginia, (Our11003)

Dear Mr. Springer:
GeoConcepts Engineering, Inc. (GeoConcepts) is pleased to present this letter that summarizes our review of the drawings dated May 13, 2011 for the above referenced project. These services have been performed in accordance with our proposal/agreement dated November 15, 2010.

We have reviewed the plans, as submitted, and find that the plans were prepared in accordance with the recommendations in our Geotechnical Engineering Report dated March 4, 2011.

We appreciate the opportunity to be of service for this project. Please contact the undersigned if you require clarification of any aspect of this report.

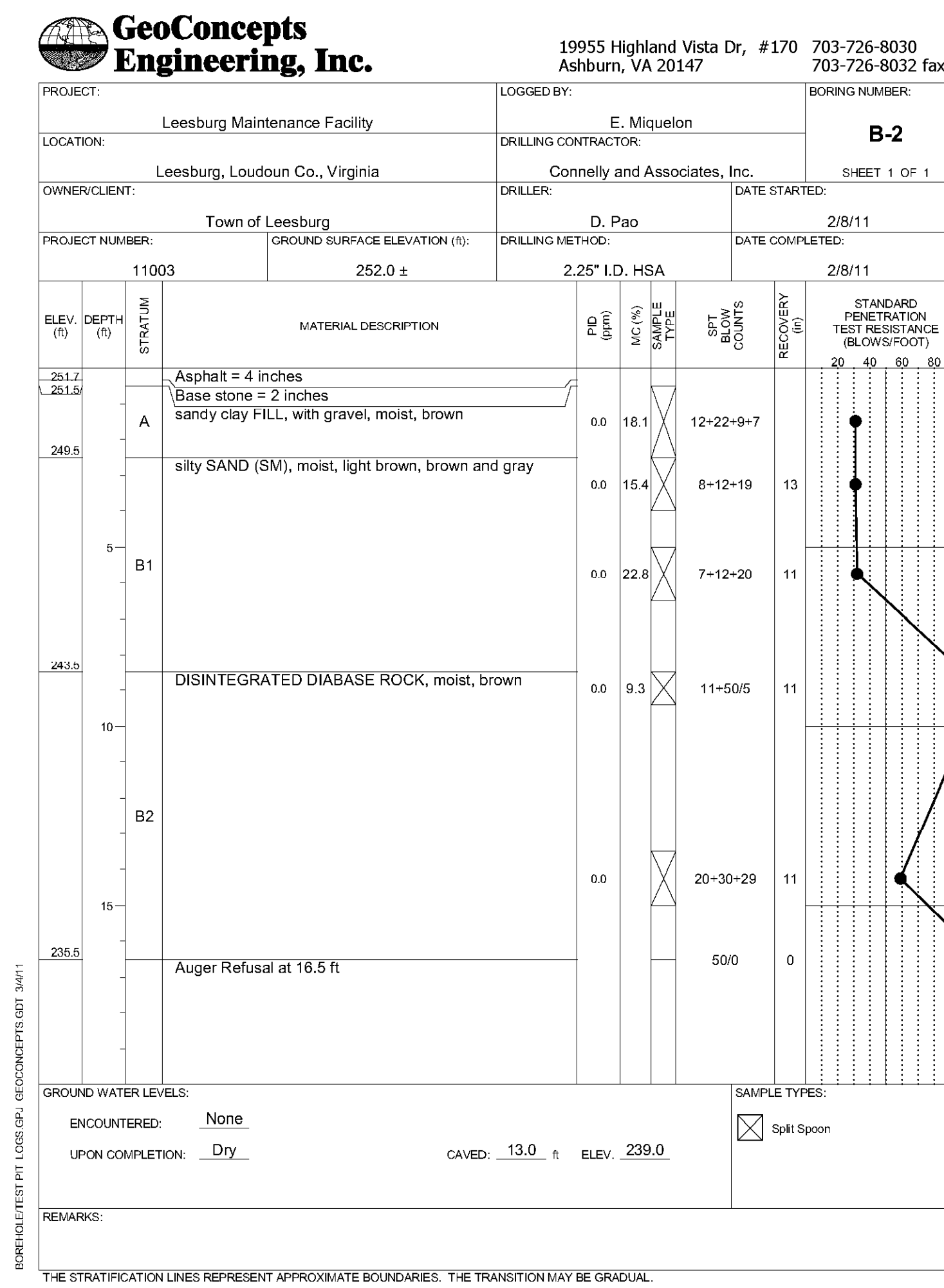
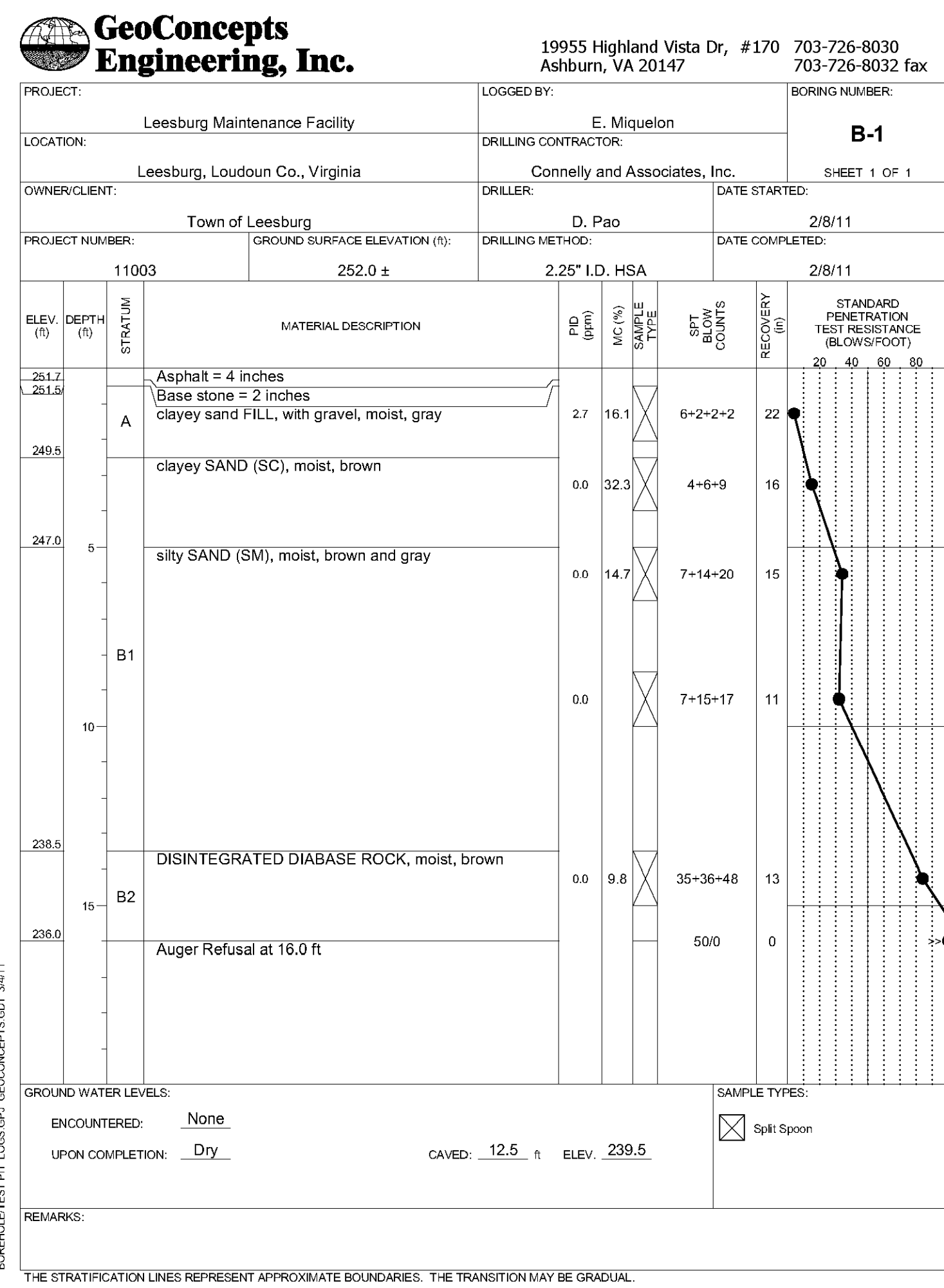
Sincerely,
GEOCONCEPTS ENGINEERING, INC.

Paul L. Barnes, PE
Senior Engineer

Tadeusz W. Lewis, PE
Principal

PLB/TWL/dcr
N:\PROJECTS\11003_Leesburg Maint. Facility\Documents\Drawing\Drawing Corrt.letter_05-24-11.doc

coversheet of geotechnical report and letter
from geotechnical engineer added



M:\projects\2009\09080_Leesburg\Task 03_Maintenance Facility\CADD\Current Sheets\Fuel Island\17-GEOTECH 1.dwg May 24, 2011 2:04pm
RKK_SIT.CIB Plot Scale 1=1
Plot By: abornall TabLayout