



**TOWN OF LEESBURG, VIRGINIA
DEPARTMENT OF CAPITAL PROJECTS MANAGEMENT
25 WEST MARKET STREET
LEESBURG, VIRGINIA 20176**

**LOWER SYCOLIN SEWAGE CONVEYANCE SYSTEM
IFB No. 07404-FY12-01**

**ADDENDUM NO. 4
December 6, 2011**

To Bidders:

This Addendum is hereby made a part of the Contract Documents on which all bids will be based and is issued to correct and clarify the original documents. All changes, additions, deletions or clarifications included herein as Addendum No. 4 shall become a part of the Contract Documents as if originally called for in the Plans and Specifications.

Please acknowledge receipt of this Addendum at the appropriate space on the Bid Form by inserting its number and date. This Addendum consists of two (2) pages and one (1) attachment. This addendum forms a part of the Contract Documents as it supplements and/or modifies as follows:

CLARIFICATIONS:

1. Q. There seems to be a conflict with the plans and specs concerning the area of the Comminutor and Pump Vaults. From the research I have done you are not able to get Class I, Div.1 equipment and enclosures (per specs) and have them NEMA 4X as well (per plans). NEMA 4X drops the area to a Class I, Div.2, We need clarification on exactly what they want for these areas.
 - A. Both vaults need to be wired for a Class 1, Division 1 location.

Make the following changes on Sheet E-2.

- i. At Detail 3 revise the cast aluminum surface mount junction box to be a Class 1, Div 1 box of the same dimensions.
- ii. At Detail 5 revise the cast aluminum surface mount junction box to be a Class 1, Div 1 box of the same dimensions.
- iii. The emergency stop button is an English made unit and is XP and Nema 4X. If difficulty is encountered in obtaining this unit a more conventional control station may be used such as Crouse-Hinds FlexStation with Corro-free finish, Appleton ATX Unicode 2 stainless steel enclosure, or equal. Provide a conduit sealing fitting for this control station.

2. Q. Drawing E-1 Lighting Fixture Schedule

Type `C' is identified as ceiling mount near hatch in the remarks column. The fixtures are used in the Flow Meter and Valve Vaults but are shown as wall mount. Do we disregard the remarks note and provide wall mounted units?

A. As indicated disregard this note as written and change to "WALL MOUNT".

3. Q. Drawing E-1 Lighting Fixture Schedule

Types `E' and `G' list the manufacturer as Dailight Safe Site which appears to be a typing error. There is a manufacturer Dialight that offers a product line Safesite Series LED High Bay Luminaire, Part Number HBA9C4M which includes a bracket for wall or ceiling mounted, and is designed for use in Hazardous Area applications. Is this unit acceptable?

A. The correct manufacturer, type and model number are as indicated above, Dialight Safesite LED High Bay rated for use in a hazardous area. The part number indicated is the unit specified.

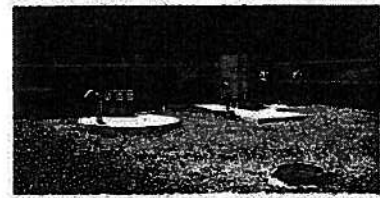
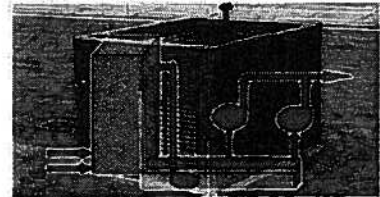
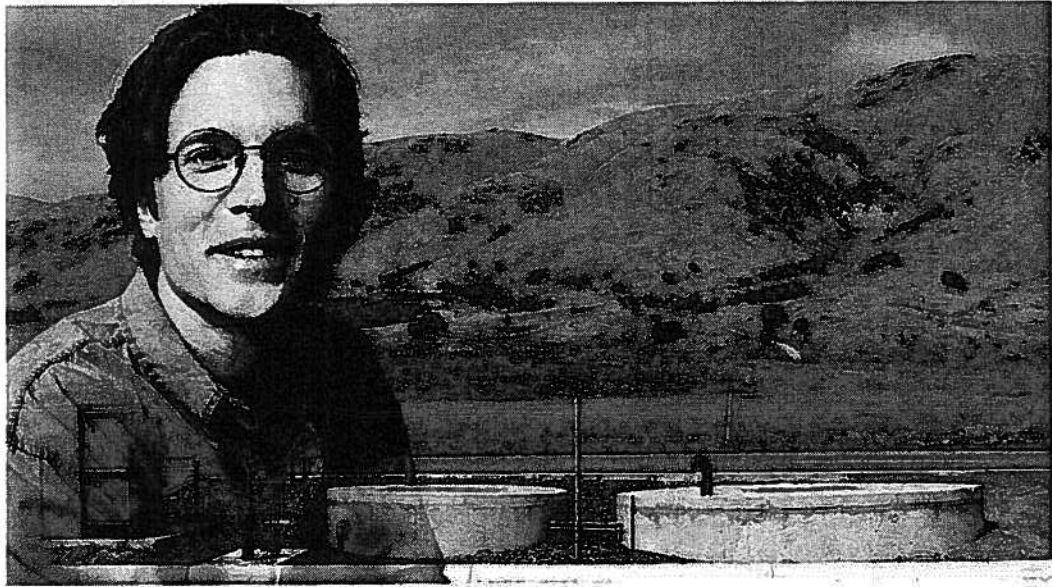
4. Q. Specification 16700 2.3 CS CORPORATION...paragraph d. states the only Equipment components to be provided with this system shall be a "monitoring box". It would appear that this is an integrating component for an existing system. The description sounds like the Centum CS System offered by Yokogawa. Can the owner provide the original vendor information that provided the main system?

A. This specification identifies a lift station diagnostic monitoring system formerly sold by ABB. See the attached specification sheet (**Attachment No. 1**). This device is now sold and maintained by CS Corporation whose contact information is: Ray Sasso, 5730 Field Crest Dr., Boise ID 83704. Email: rsasso@cableone.net. Telephone number: 208-322-0010. However, this unit will now be provided and commissioned by the Owner. The Contractor will now only mount and make all connections to the unit, including telephone, as well as providing the pump motor current sensors.

END OF ADDENDUM NO. 4.

Specification Bulletin

Lift Station Diagnostic and Information System



Equipment Components

The only equipment components are located at each lift station:

- One current sensor for each lift pump motor and one for the sump pump motor
- One small, wall-mounted electronic node box for accepting the above motor current signals as well as discrete signals (i.e. intrusion-type alarm, well level alarm, power failure alarm).

Remote Node Box Specifications:

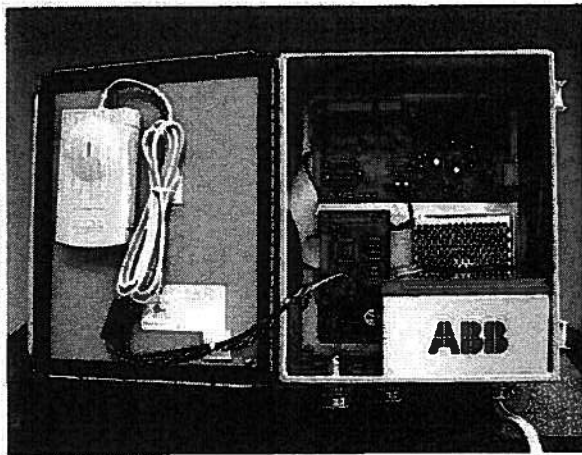
Power: 100-240VAC; 1.3 amps (max @ 110VAC), 50-60Hz

Battery: 12VDC 7AH Sealed Lead Acid Alarm Battery (Powersonic #PS-1270-F1)

Enclosure: Hoffman A-1210CHFTC NEMA 12 (before box penetration)

(A NEMA 4 or NEMA 4X box with similar dimensions is also available.) All boxes have available key lock or padlock.

Operating Temperature: -10°F to 140°F



Communication Options:

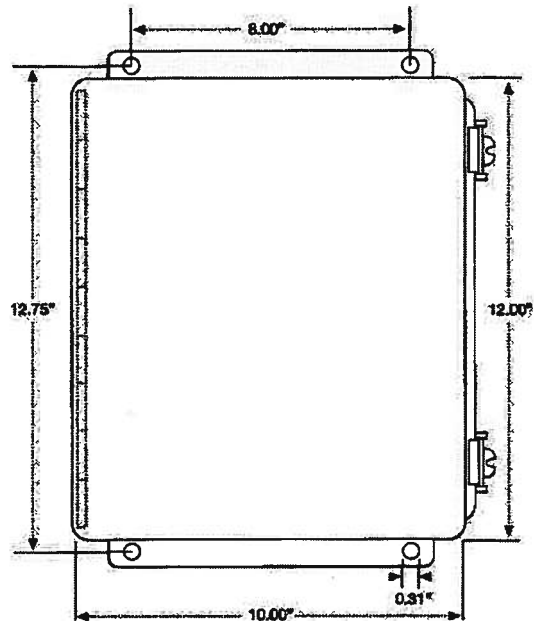
Land Line: Standard phone line using standard RJ11 connector.

(If phone line is shared with other equipment (e.g. alarm systems), a line restriction switch is provided. This will allow alarm systems to take control of the phone line from the Node Box.)

Cellular: (Optionally available for added cost if required.) AMPS analog cellular service. (The cellular provider needs the box cellular modems' ESN# to initiate service. ABB needs the service providers' local service ID # to program Node Box/Modem.)

ISP: Local ISP access: (PPP dialup line; username, password, local phone number is needed to program the Node Box.)

Connection Time (average): 40 sec.

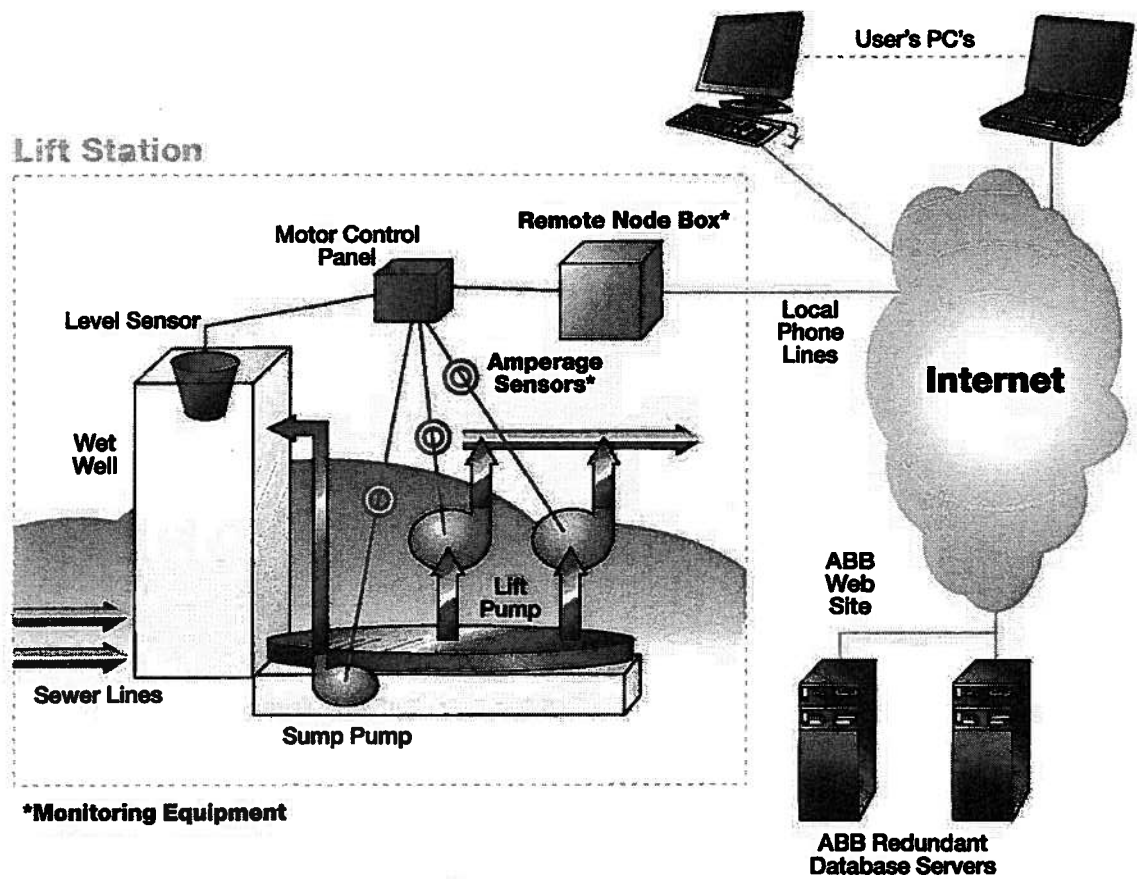


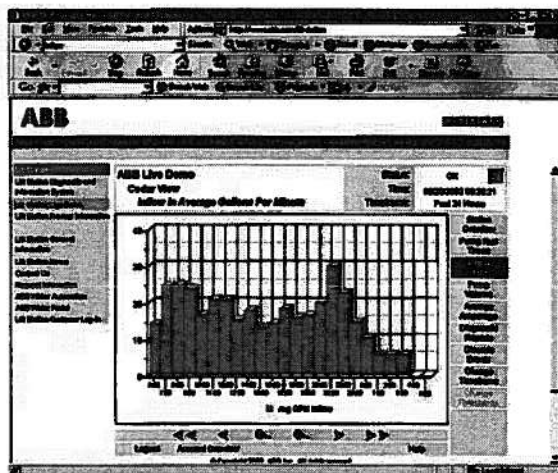
Current Transducer Specifications:

(Quantity per Node Box is dependent upon the number of lift pumps in the lift station.)

Model #: Honeywell-Microswitch CSLA (Hall Effect type), 3-100amp, Single-Phase, 0.43" Diam. Aperture," Cable Length: 15' shielded.

(Larger current transducers are optionally available if needed.)





Station Inflow Display



ABB Inc.
 Regional Center Americas
 Wickliffe, OH 44092 USA
 Tele.: 800-HELP-365, option 6
 Web address: <http://www.abb.com/lift-station>

3EUS067003R0001