

LEESBURG POLICE DEPARTMENT ANNUAL REPORT 2011



*Leadership
Pride
Dedication*



Chief Joseph R. Price



LEESBURG POLICE 2011 FACTS AT A GLANCE

CRIMINAL ACTIVITY

- Group A Incidents .09% increase
- Part I Crime 11.9% increase
- Violent Crime 5.4% decrease

POLICE ACTIVITY (CALLS FOR SERVICE AND OFFICER INITIATED CALLS)

12% Increase

AVERAGE RESPONSE TIMES (from time citizen's call received in Communications Center until officer arrives on-scene)

Emergency - 3 minutes 43 seconds

Non-Emergency - 5 minutes 39 seconds

ARRESTS

Total – 1787

Adult – 1468

Juvenile – 319



TRAFFIC ACTIVITY

CRASHES

- 27.8% increase in total crashes
- 5.9% increase in crashes with injury
- Intersection with highest number of crashes – Sycolin Rd @ Bypass
- Causation Factor – Driver inattention

TRAFFIC TICKETS - 6795

DUI Arrests – 99



Leesburg Police Department Annual Report – 2011

Dear Members of the Leesburg Community:

I am pleased to present you with the Police Department's 2011 Annual Report. The mission of the Town of Leesburg Police Department is to keep our community safe by providing the highest quality of police services. In 2011, Part I crime increased by 11.9% and violent crime decreased by 5.4% from 2011 levels.

The major cause of our Part I crime increase was larceny; with the bulk of the increase being shoplifting and larceny from autos and most involving unlocked vehicles. The simple act of locking a car door or removing valuables from a car can have a tremendous impact on crime in our community. The suspect in 57 of the 260 incidents used forcible entry. Thirty-five of the 57 forcible entry incidents involved the Oaklawn (Melaku) series in May 2011 and the string of summertime thefts of construction equipment from hotel parking lots. The majority of the 2011 larceny from vehicle and vehicle tampering incidents can be linked to ten series cases. In these cases, suspects were identified and many were charged.

In the burglary category, some of our increase can be attributed to a rash of nighttime commercial burglaries in the downtown. A suspect has been identified and charged with those crimes. In reviewing the burglaries of 2011, 35% of the cases are closed and another 25% remain under active investigation.

The cornerstone of our success is the skill, dedication, and commitment of the men and women of this Department. These accomplishments reflect every member's strong commitment to our organizational values of Leadership, Pride and Dedication. I also want to thank the members of the Leesburg Citizens Support Team and the Leesburg Police Explorer Post for their individual and collective efforts, hard work, and contribution throughout the past year.

While our community remains a safe place to live, work and prosper, we are starting to see some upticks in criminal activity. Our workload has increased and while the increases in property crime are crimes of opportunity, we have developed and implemented strategies that we believe will allow us to quickly identify and react to crime trends. I know that I speak for every member of the Leesburg Police Department in saying that our success would not be possible if it were not for the strong partnership that we have with the Town leadership, other Town departments and most of all you the community. We pledge to continue to work with our partners to achieve our shared vision for Leesburg.

Joseph R. Price
Chief of Police



Leesburg Police Department

Mission

The Leesburg Police Department is committed, in partnership with the community, to provide the highest quality of police services by using innovative, proactive approaches to improve the quality of life in Leesburg, while at the same time maintaining respect for the rights and dignity of all.

Vision

Committed to Make Leesburg the **Safest** Community by:

- ❖ Providing high quality and high value service, the **first time, every time.**
- ❖ Creating a work environment where people want to come to work and succeed.
- ❖ Treating all with respect and dignity.

Organizational Values

<i>Leadership</i>	<i>Pride</i>	<i>Dedication</i>
We are committed in leading the town government and the law enforcement profession by setting a mark of excellence in everything that we do.	We pride ourselves on our commitment to maintaining the public trust and respect through a commitment to the highest standards of integrity and professional ethics. We are committed to respecting the rights and human dignity of all and the value of all members of the community and Department.	We are dedicated to provide the highest quality of service in a consistent manner that emphasizes effectiveness, efficiency and innovation. We are dedicated to empower our employees to take risks, expand horizons, and always pursue excellence.

Excellence through *Leadership, Pride and Dedication*

Major Accomplishments in 2011

- ... Continued reductions in violent crimes
- ... Criminal case closure above national average
- ... Fully implemented New World Computer Aided Dispatch (CAD) and Records Management System (RMS)
- ... Completed the deployment of In-Car cameras
- ... Successfully partnered with Loudoun County Sheriff's Office on a False Alarm Reduction Program
- ... Major Operations/Events
 - 2011 9/11 Memorial Motorcycle Ride
 - Police response and Emergency Management
- ... Continued with intelligence-led policing crime analytical system (Command Central) that provides all staff members with access to timely and actionable data
 - A web-based system allows Leesburg Police to rapidly view crime and calls for service data in a graphic format, and share crime data with the public in near real-time.
- ... In 2011, the LPD implemented a directed patrol strategy (Hot Spot Policing) based on evidence that half of crime occurs at 5% or less of street blocks and addresses
- ... Utilized the full capabilities of the District Command Concept – Operations Division
 - Provides clear / accessible point of contact for community
 - Serves as a central point of reference for citizens to access LPD and perhaps ultimately Town resources
 - Expands geographic/community responsibility to command levels
 - Enhances community outreach
 - Develops a strong community based leadership core
 - Allows for more community based analysis
 - Commanders constantly monitor crime, traffic and qualities of life issues within assigned command area
 - Allows for more rapid problem identification and resolution
 - Will be able to marshal command, division, Department and Town resources to address problems

2011 Milestone Events /Cases

America's 9/11 Foundation Motorcycle Ride – Tenth Anniversary

On Friday, August 19, 2011 America's 9/11 Foundation Motorcycle Ride conducted their memorial 9/11 ride in honor and memory of those who perished on 9/11. As this was the tenth anniversary of the attacks, a large turnout from both motorcycle riders and spectators was expected.

Leesburg Police and Virginia State Police working with the Sheriff's Office put together an outstanding plan that was flawlessly executed. The plan established traffic control points from the Point of Rocks Bridge onto the Greenway. As a result, the ride was conducted with minimal impact on local and regional traffic and was viewed as a tremendous success.



Leesburg welcomes the 9/11 Ride – (photo –Leesburg Today)

East Coast Rapist Caught, Indicted



In March, the work of a region-wide task force came to a successful conclusion. Through exhaustive investigative work and innovative public outreach, the man believed to have eluded police in multiple jurisdictions after committing a series of rapes from Virginia to Connecticut was identified and arrested through DNA analysis. A Loudoun County Grand Jury indicted 40-year-old Aaron H. Thomas, the man believed to be the East Coast Rapist, for the 2001 rape of a woman in her Leesburg apartment.

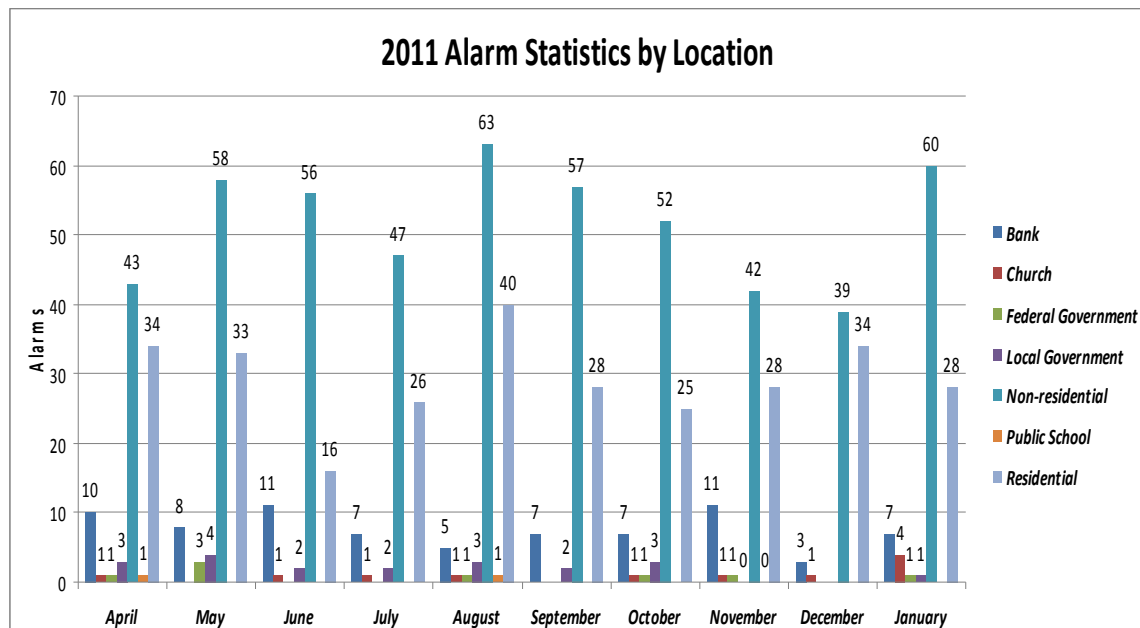
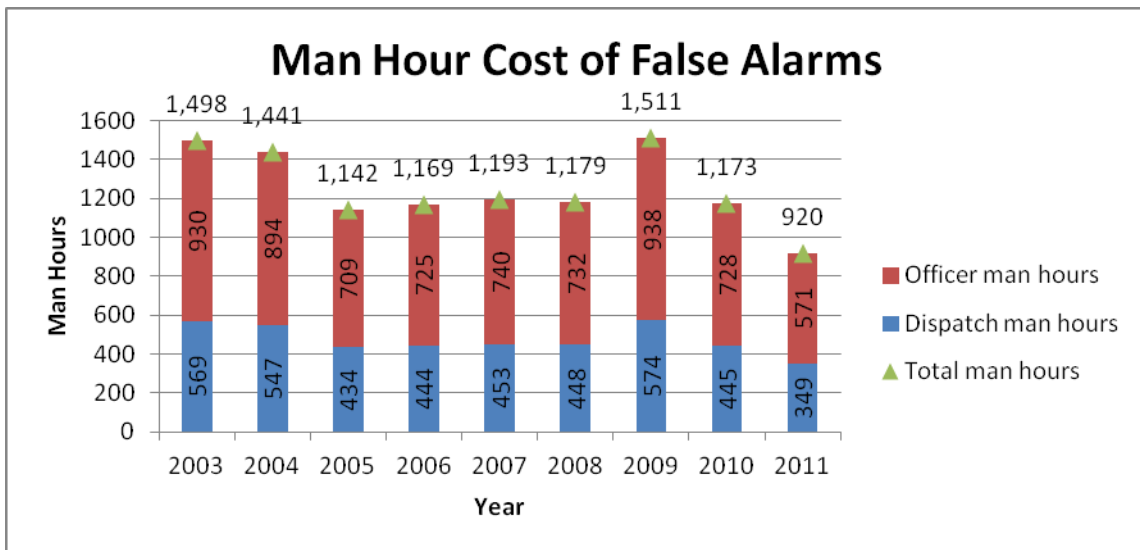
Shooting Suspect Convicted Of Thefts

In May, 22-year-old Yonathan Melaku was arrested and charged with breaking into 27 cars in the Oaklawn neighborhood. On June 17, he was involved in an incident near the Pentagon. The Leesburg Police Department coordinated our investigation and case with federal authorities. As a result, Melaku was charged with destruction of property and firearm violations in connection with the shootings at recruiting stations and the National Museum of the Marine Corps between October and November, 2010.

Leesburg Police Department Annual Report – 2011

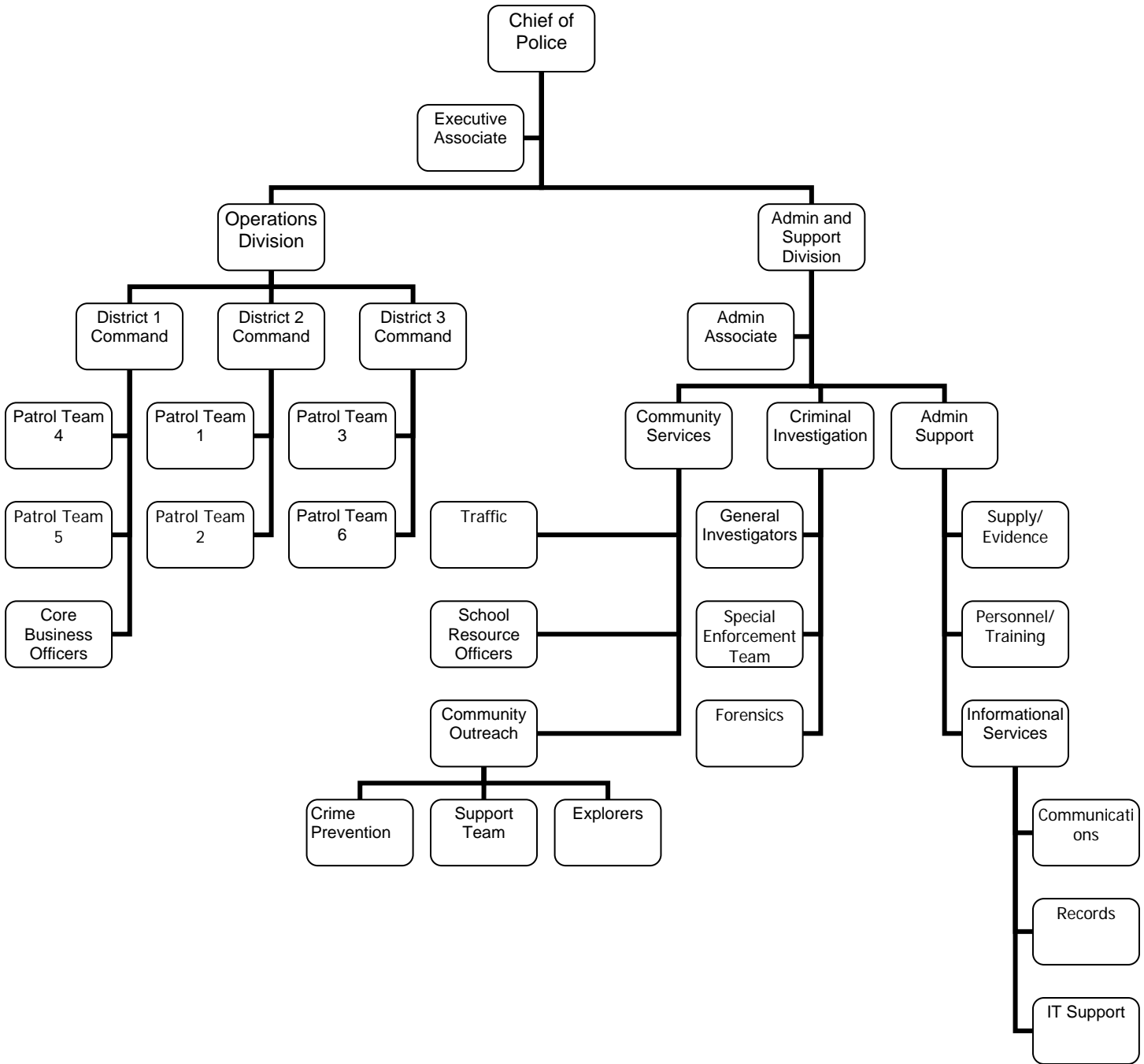
False Alarm Reduction Program

In April, the Department initiated a program to reduce false alarms in the community. With administrative support from the Loudoun County Sheriff's Office, the program seeks to identify chronic offenders and provide incentives for false alarm reduction through fines and educational programs. As a result, there is a 21% decrease from 2010 to 2011. Alarms are the lowest they have been in 9 years.



Leesburg Police Department Annual Report – 2011

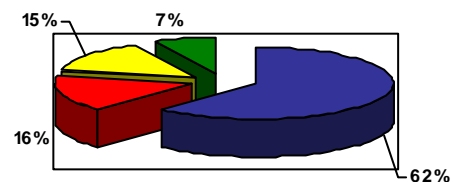
Organizational Chart - 2011



DEMOGRAPHICS

2010 Population: 42616
 Land Area: 12 square miles
 Total LPD full-time employees: 101
 Total full-time sworn officers: 85
 Officer per 1,000 ratio: 1.99

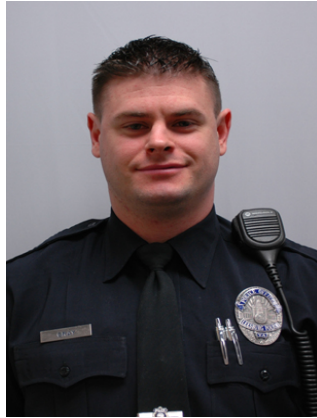
Officer Deployment



■ Patrol
 ■ CIS
 ■ Community Services/Traffic
 ■ Admin

Department Awards & Recognition

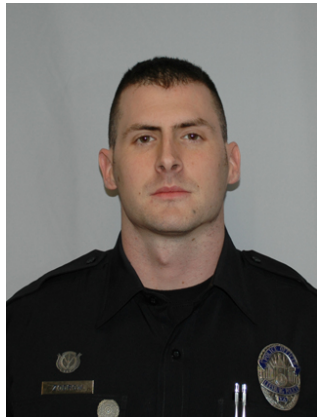
2011 MADD Award:



Wayne Gray

On May 13, 2011, the Mothers Against Drunk Driving, recognized Police Officer Wayne Gray at the 20th Annual Awards for Excellence in Community Service and Public Safety. Officer Gray was recognized for his outstanding efforts in the area of drunk/impaired driving enforcement. Officer Gray arrested 28 drunk drivers during CY 2010 and is commended for his efforts to keep our streets and highways safer.

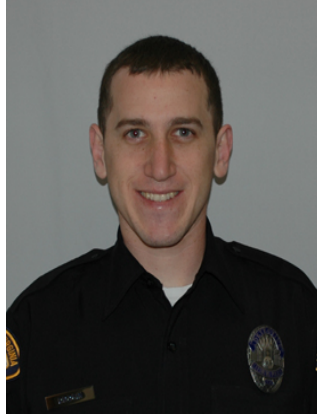
Employee of the Quarter 1st Quarter



Kevin Zodrow

Officer Zodrow was recognized as the Employee of the Quarter for the 1st Quarter of 2011. Officer Zodrow is currently assigned as a basic police academy instructor at the Northern Virginia Criminal Justice Training Academy (NVCJTA). Officer Zodrow was instrumental in developing and instructing a reality-based active shooter scenario for the police academy staff. He also obtained his personal trainer certification and developed a functional fitness gym at the police academy.

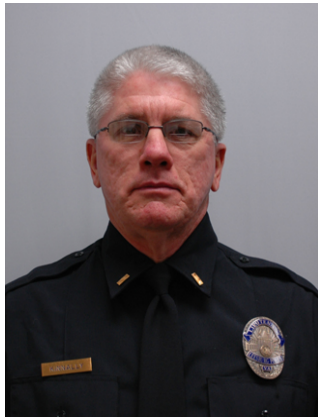
**Employee of the Quarter
3rd Quarter**



Michael Drogin

Detective Drogin was recognized as Employee of the Quarter for the 3rd Quarter of 2011. Detective Drogin is currently assigned to the Criminal Investigations Section. Detective Drogin was successful in the investigation and prosecution of several suspects who were responsible for the larceny of items from over 20 vehicles.

Fairfax County Team Excellence Award



Lt. Tom. Kinnally



Paul Holzerland

Lieutenant Kinnally and MPO Holzerland were recognized by Chief David Rohrer of the Fairfax County Police for their work as part of the East Coast Rapist Task Force. This Task Force brought to a successful conclusion an investigation that spanned over a dozen years and multiple jurisdictions all along the East Coast.

2011 Victims' Services Award



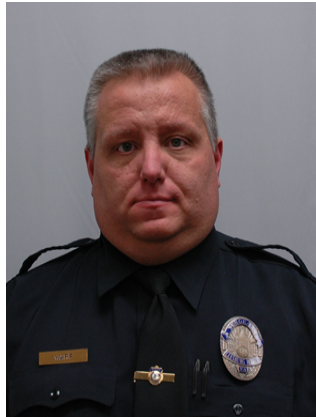
Bob Thompson

In April of 2011, the Victim Witness Section of the Commonwealth Attorney's Office and the Loudoun Child Advocacy Center recognized Detective Bob Thompson for his professionalism, dedication, excellent skills, and for 'thinking out of the box' among other qualities that he possesses in his work on child abuse cases. Bob has been one of the leaders in establishing a functioning child advocacy center in Loudoun County.

Promotions

In 2011, a number of Department members advanced either through a competitive promotion process or through the Department's Career Development program. Each member worked very hard for their respective advancement and are congratulated on their success.

Sergeant

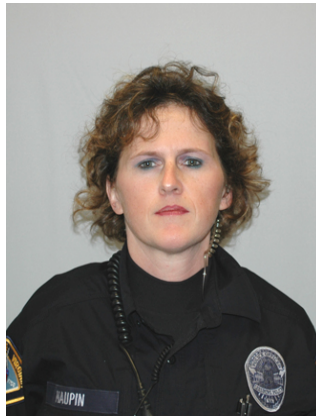


Edward Warf

Master Police Officer



Dale Depoy



Heather Maupin



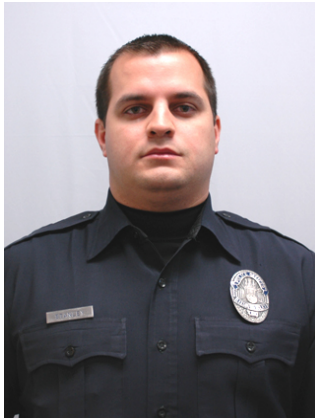
Eric Wakeham

Leesburg Police Department Annual Report – 2011

Police Officer III



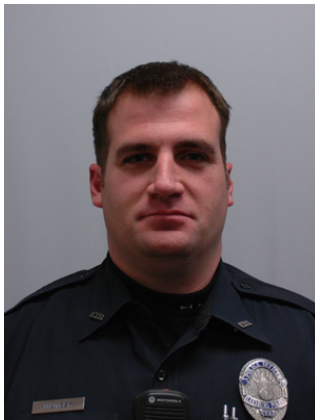
Christopher Parker



Drew Stanley

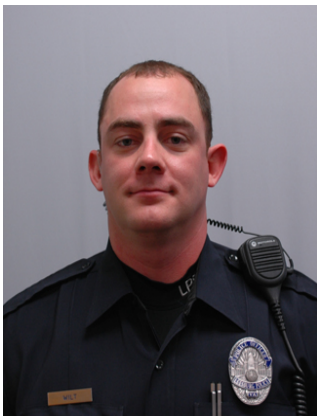


Jesse Zappia

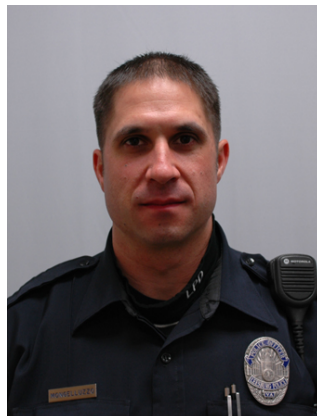


Robert Munger

Police Officer II



Justin Wilt



Christopher Mongelluzzo

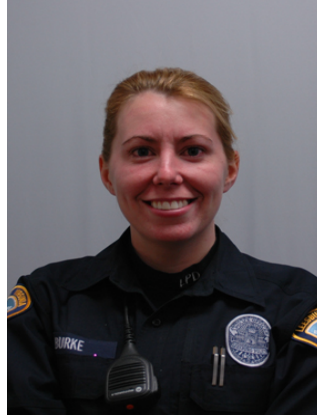


Joseph Marsten

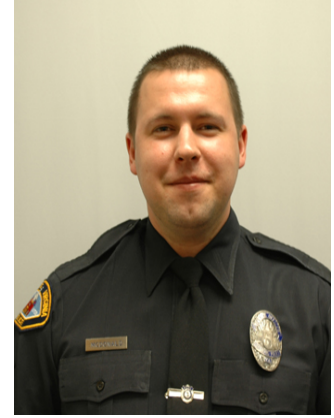
Police Officer II, continued



Frank Borelli



Jessie Burke



Michael McDonald

Communications Technician II

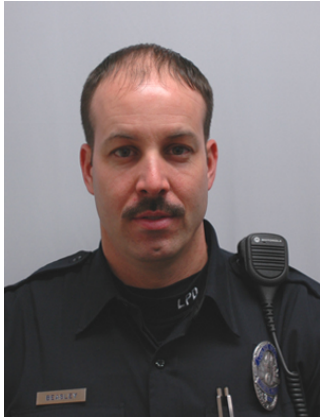


Melissa Krise

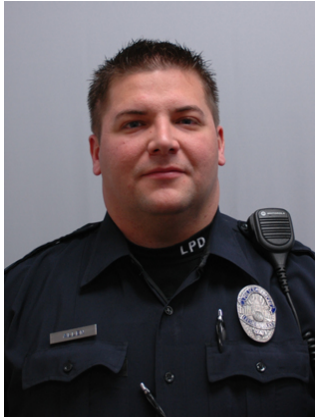


Karen Potts

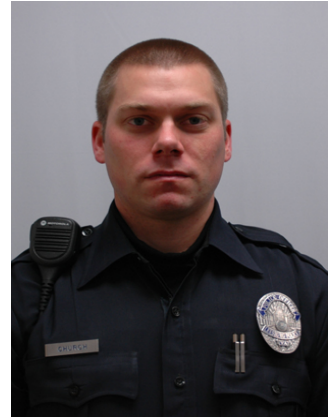
New Members Joining the Department in 2011:



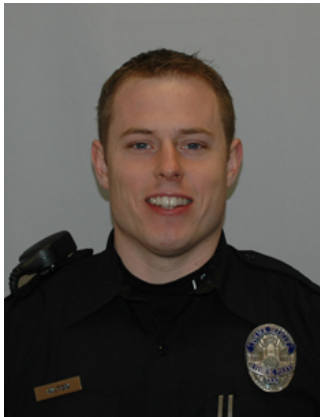
Allen Beasley



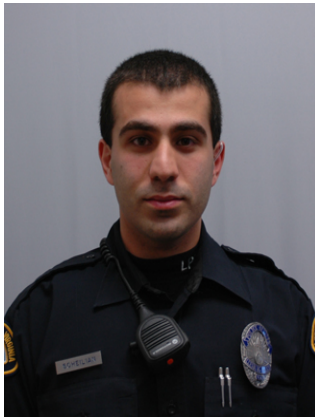
Thomas Allen



Brian Church



Alex Hilton



Seena Soheilian



CT Stephanie Sills

Making a Difference - One child at a time

Department members continue their commitment of service to the community even when they are off-duty. Staff collected donations and then fed a delicious Thanksgiving meal to over 100 people, many of whom were children.

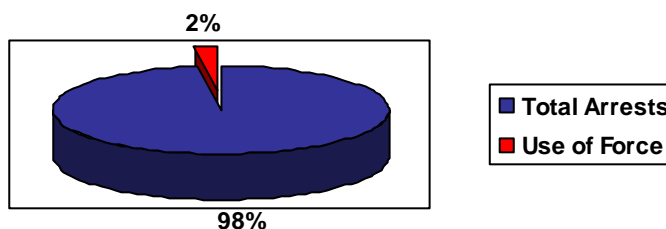
Members of the Citizens Support Team, Explorer Post and Department staff collected donations and took a number of children holiday shopping – as one youngster put it – “this is the best day of my life.”



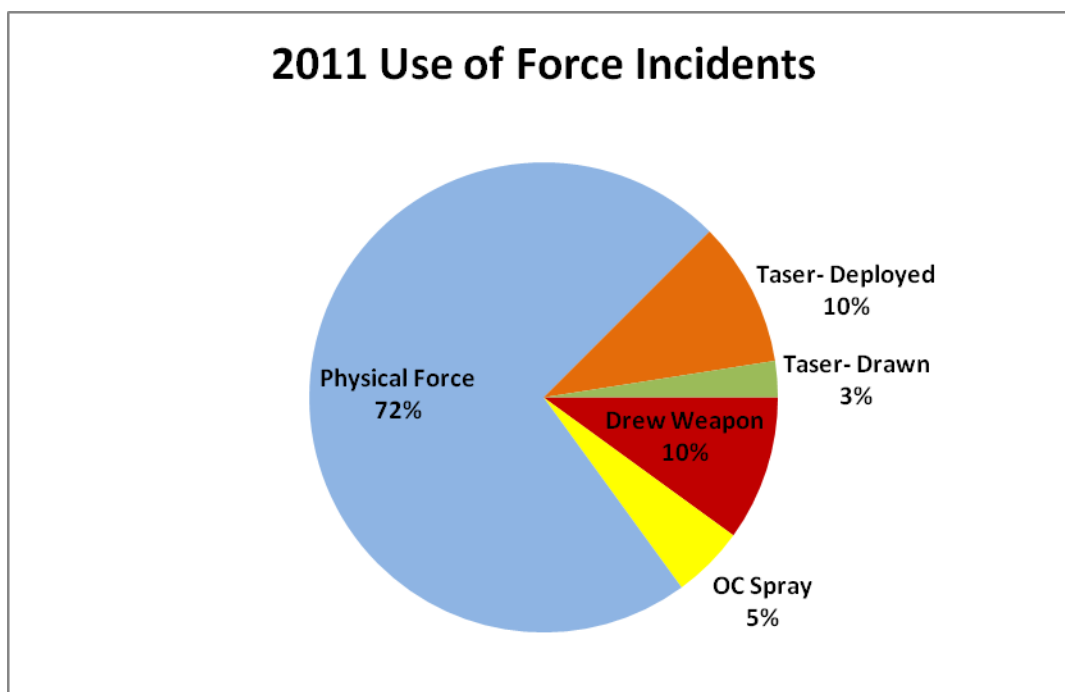
Citizen Complaints & Use of Force

During the calendar year 2011, the Police Department received seven formal complaints from citizens arising from more than 50,700 documented citizen contacts. In addition to the citizen complaints, the Department self-initiated eight complaints. An administrative investigation was initiated in each of the 15 cases. The complaints involved concerns such as improper application of law, improper application of Department policy or procedure, and allegations of misconduct. Following an internal investigation, sustained violations were found in four of the cases. In those four cases, an employee was found to have violated Department policy and appropriate corrective action was taken. In the remaining eleven cases, the employee's actions were found to be correct or the complaint was unfounded.

2010 Use of Force



2011 Use of Force Incidents

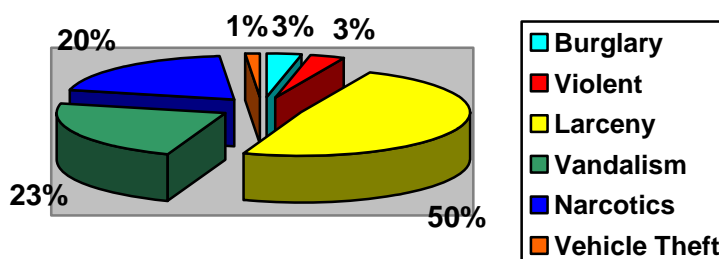


There were 40 Use of Force incident reports out of the 50,700 documented contacts that occurred in 2011 resulting in 4 suspects and 4 officers being injured".

Criminal Activity

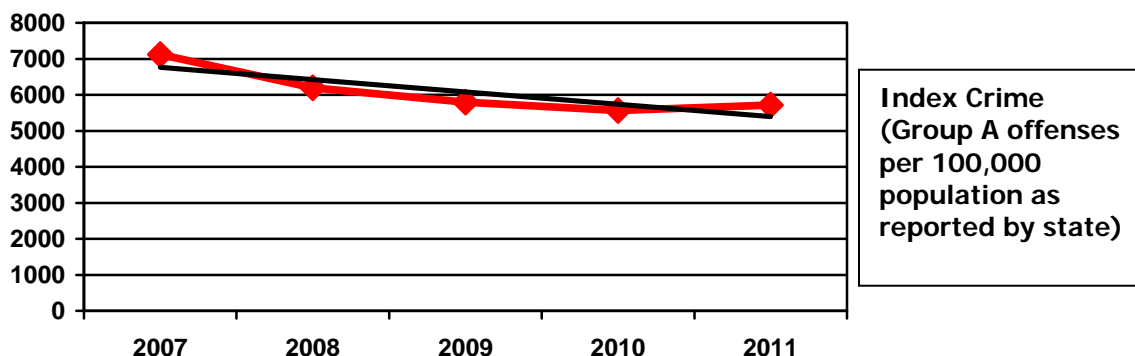
During calendar year 2011, Part I crime increased by 11.9% and violent crime decreased by 5.4%. Property related crimes, in particular larcenies and vandalism / destruction of property, continue to account for the largest categories of criminal activity in 2011. (* includes attempts.)

Crimes By Type (*Includes Attempts)	2009	2010	2011
Murder	2	0	0
Rape*	11	13	6
Robbery*	19	11	6
Aggravated Assaults	33	32	41
Burglary*	44	42	55
Larceny*	666	691	790
Motor Vehicle Thefts*	24	32	21
Vandalism / Destruction of Property*	370	398	370
Narcotics	277	270	325



All members of the Department are committed to achieving our vision of making Leesburg the **Safest Community**. Even with increasing population and workload, the Department through innovative approaches such as our problem solving activities and the Crime and Traffic Accountability Program (CTAP), has been able to achieve a continued index crime reduction trend over the past five years.

5 Year Index Crime Trend



Criminal Investigations Section

The mission of the Criminal Investigations Section (CIS) is to conduct follow up investigation on felony complaints referred by the Operations Division and cases proactively developed by CIS personnel. The goal of CIS is to reduce crime within the Town by focusing its investigative resources on habitual offenders and felons by incorporating the Department's Intelligence Led Policing strategies. Additionally, CIS personnel process crime scenes and analyze computers, cellular telephones and video media to recover evidence.

Special Enforcement Team (SET)

The mission of the SET is to provide proactive analytical and enforcement capability targeting locations of high/serious crime, and individuals who pose a serious threat to public safety. The SET provides the capability to identify, locate and apprehend serious criminals and address crime problems and patterns that impact the safety of the Town's citizens. The analytical aspect of this unit provides direct support to many investigative programs in identifying and targeting suspects in serious criminal activities.

During 2011, CIS personnel were assigned 1125 investigations. In addition, they conducted 58 forensic examinations of cell phones.

Table showing the CIS investigated *offenses* by category during each quarter of 2011

CIS Investigative Categories	CY 2011				YTD
	Qtr 1	Qtr 2	Qtr 3	Qtr 4	
Assigned & Under Investigation	150	181	179	171	681
Pending Warrant/Court	40	45	36	38	159
Investigation Closed	73	72	65	75	285
Total Offenses	263	298	280	284	1125
Successfully Closed Offenses	113	117	101	113	444
Under Investigation	150	181	179	171	681

Leesburg Police Department Annual Report – 2011

Table showing the investigative status of the investigative categories during each quarter of 2011

CIS Investigative Category	Investigative Status	CY 2011				
		Qtr 1	Qtr 2	Qtr 3	Qtr 4	YTD
Category 1	ASSIGNED	0	2	2	3	7
	COURT	3	5	5	2	15
	INV CLOSED	13	14	3	12	42
	UNDER INV	22	20	13	14	69
	WARR PEND	1	1	1	1	4
	Category 1 Total	39	42	24	32	137
Category 2	ASSIGNED	1	7	7	4	19
	COURT	13	15	8	6	42
	INV CLOSED	23	18	21	30	92
	UNDER INV	72	78	94	78	322
	WARR PEND	4	5	4	5	18
	Category 2 Total	113	123	134	123	493
Category 3	ASSIGNED	0	2	2	2	6
	COURT	0	0	0	0	0
	INV CLOSED	0	1	2	1	4
	UNDER INV	4	4	1	0	9
	Category 3 Total	4	7	5	3	19
Category 4	ASSIGNED	2	6	6	4	18
	COURT	6	5	0	4	15
	INV CLOSED	3	13	7	8	31
	UNDER INV	18	16	20	20	74
	WARR PEND	0	3	3	3	9
	Category 4 Total	29	43	36	39	147
Category 5	ASSIGNED	0	0	0	0	0
	COURT	1	3	8	11	23
	INV CLOSED	1	4	5	2	12
	UNDER INV	6	12	11	14	43
	WARR PEND	0	0	0	1	1
	Category 5 Total	8	19	24	28	79
Category U	ASSIGNED	0	2	2	2	6
	COURT	8	7	6	4	25
	INV CLOSED	33	22	27	22	104
	UNDER INV	25	32	21	30	108
	WARR PEND	4	1	1	1	7
	Unclassified Total	70	64	57	59	250
Total Offenses Assigned		263	298	280	284	1125

(Category 1: persons crimes; Category 2: property crimes; Category 3: computer crimes; Category 4: fraud; Category 5: drug, gang, and organized crime; Category U: Non-Reportable/Unfounded CPS Investigations, DV Investigations, Major traffic offenses investigated by CIS, SET Initiatives).

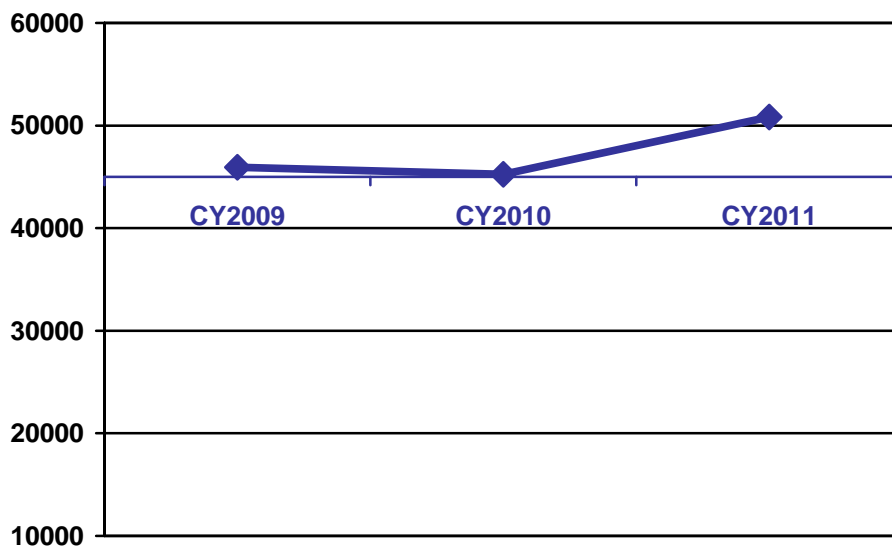
Operations Division

The primary responsibilities of the Operations Division are to respond to reported criminal activities, conduct motor vehicle crash investigations, maintain consistent enforcement of traffic and criminal laws and work proactively to partner with the community in a joint effort to improve the quality of life in Leesburg. These activities help to maintain and promote highway safety for motorists and pedestrians alike.

Calls for Police Service: 2010 - 2011

Citizen calls for police service and officer generated calls totaled 50,832 in 2011, a significant increase of over the 45,236 calls in 2010. The Department strives towards efficient community policing and encourages the community to call the police for any suspicious activity.

Patrol Calls for Service

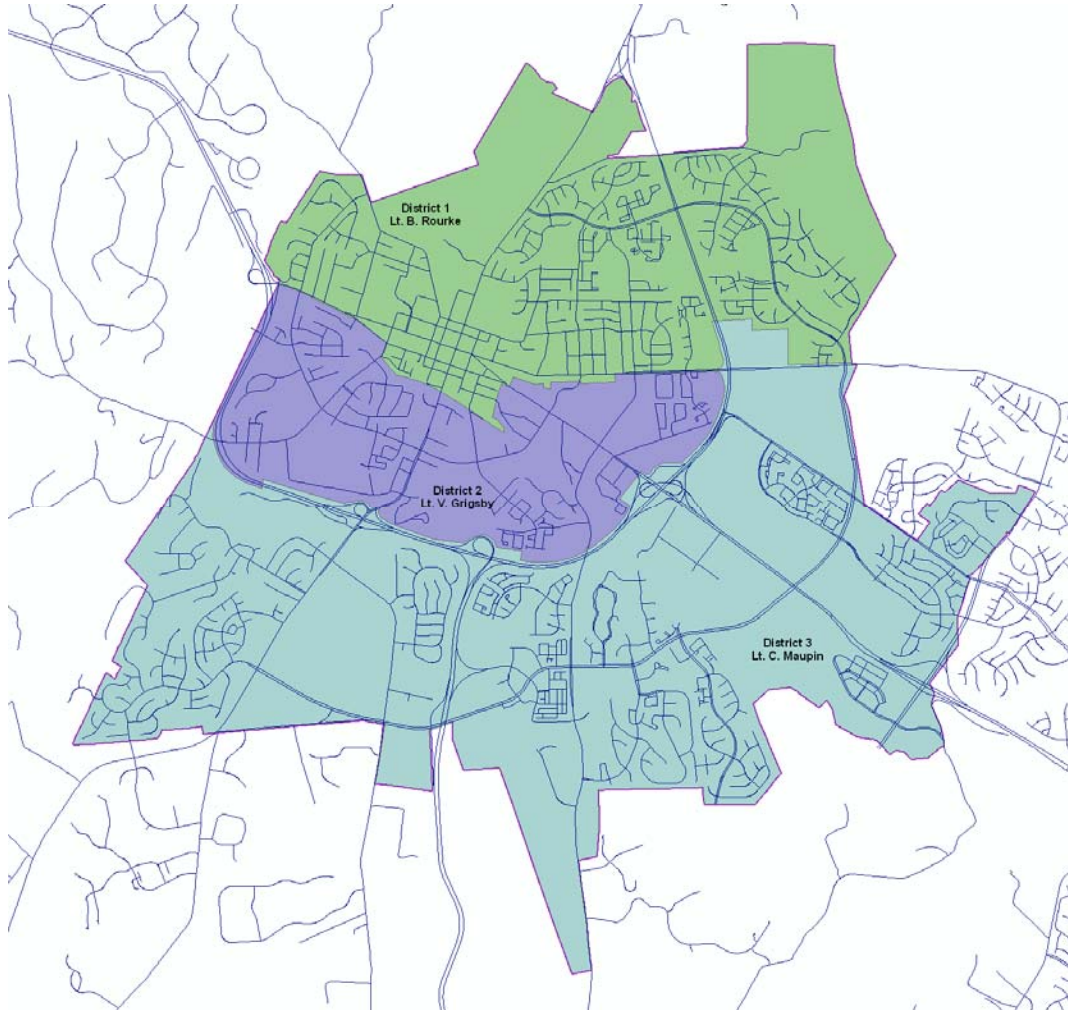


Community Policing

The Town is divided into Community Policing Sectors. Officers are assigned to a Community Policing Sector and are responsible for handling any issues within that sector. The Town is also divided into Patrol Beats which incorporate the Community Policing Sectors so that the officers will patrol the areas that include their assigned sector. The Community Policing Sectors are grouped together to form Community Policing Districts, which debuted in 2009 as the evolution in the Department's community policing/intelligence led policing philosophy continued. The Community Commander Program incorporates an assignment of a Commander to organize and delegate assignments to the officers within the Community Policing Sectors inside of those Districts.

Leesburg Police Department Annual Report – 2011

The map shows the different Community Policing Districts and indicates the Commander for the various neighborhoods. From the Town's website one can click on the link to contact a Community Commander with questions and concerns for that district.



District Commander	1	Lieutenant Brian Rourke	policedistrict1@leesburgva.gov
District Commander	2	Lieutenant Vanessa Grigsby	policedistrict2@leesburgva.gov
District Commander	3	Lieutenant Carl Maupin	policedistrict3@leesburgva.gov

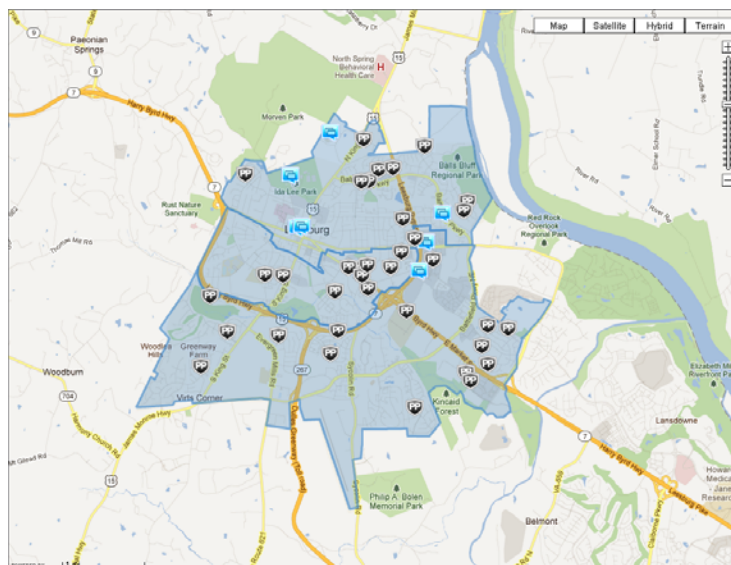
Crime and Traffic Accountability Program (CTAP)

The successful and award winning CTAP program continued to evolve in accordance with the implementation of the Community Commander Program and emerging technologies. This evolution has continued to enhance efficiency while improving information sharing and overall communication within the agency.

Officers continued their CTAP training in 2011 to better standardize their individual sector reporting efforts, which simplified the creation of District CTAP reports by the district commanders. This improved efficiency and the downsized CTAP meeting, initiated in 2009, continued functioning well in 2011. Getting the job done right with less impact on staff time, streamlined responses and efficient communication. This evolved approach to the CTAP process continued to reduce overtime, freed up staff to perform other functions and has actually shortened the meetings themselves...while reaping greater satisfaction and productivity by everyone involved. In 2012, the Operations Division will continue to look for ways to improve the CTAP reporting process for more “real-time” crime recognition and trend identification.

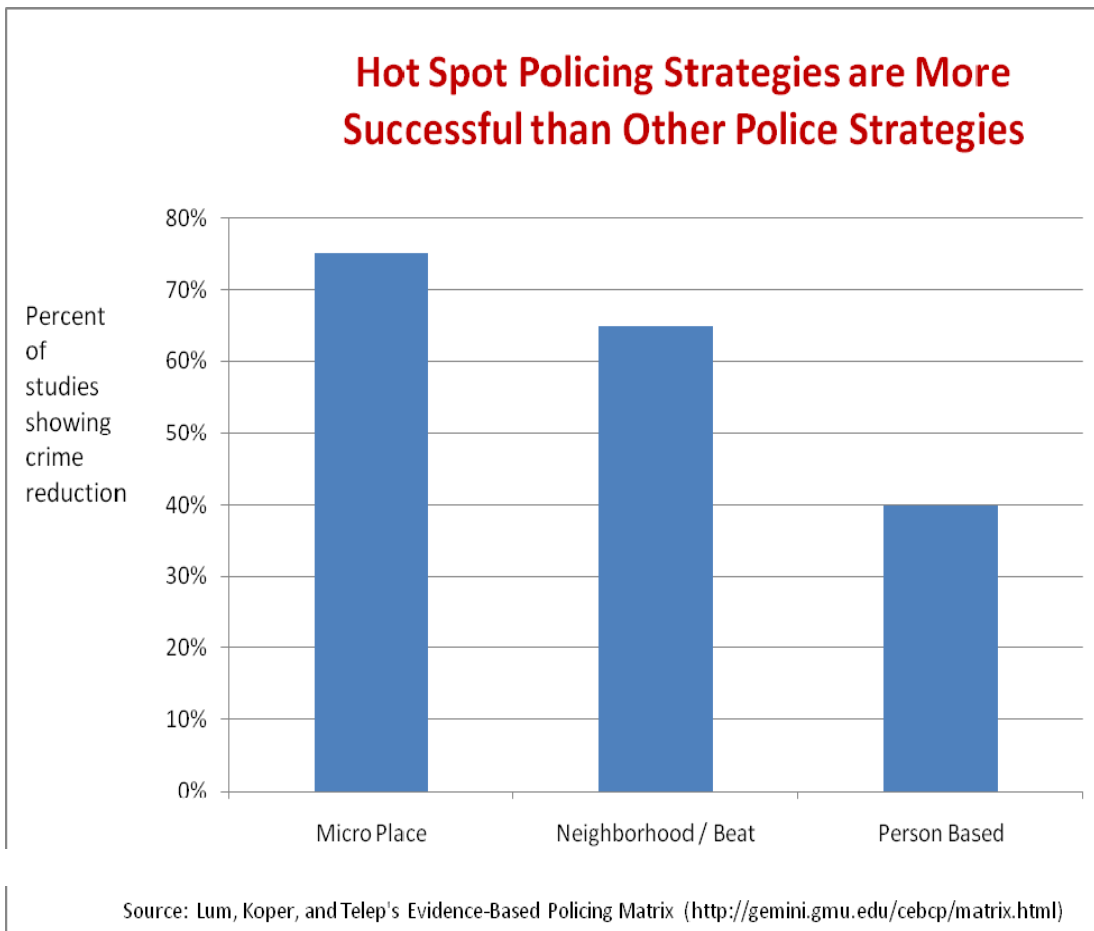
Crime Reports / Command Central

The on-going partnership with the Leesburg Police Department and Crime Reports.com has remained successful. This online technology partnership allows individual community policing officers to engage in a simple review and analysis of calls for service, busiest times, types of calls for service and other criteria in an effort to identify trends and develop successful solutions. A link to this free service is provided on the Town's police department web page and the Town's home page.



Directed Patrols: “Hot Spot” Policing (Christopher Koper - GMU)

In 2011, the LPD also implemented a directed patrol strategy (Hot Spot Policing) based on evidence that half of crime occurs at 5% or less of street blocks and addresses, as presented by Christopher Koper at the Evidence-Based Policing Workshop held by the Center for Evidence-Based Crime Policy in August 2011. Essentially, officers are encouraged to spend time at “hot spot” locations where crime is most likely to occur, thereby creating a more visible police presence. Studies have indicated that “hot spot” policing not only reduces crime, but there have been no obvious signs of crime displacement (Source: Braga review for Campbell Collaboration 2007). Hot spot places can include places with facilities and features that put them at a higher crime risk (examples: bars, convenience stores, parks, bus depots, apartment buildings, businesses, etc.). It has been shown, that by concentrating on a micro place (Hot Spot), crime reduction has been more successful than a more broad-based patrol tactic.



Quality Service

The goal of the Department is to provide quality service... *The First Time, Every Time.*



Operational Support Section

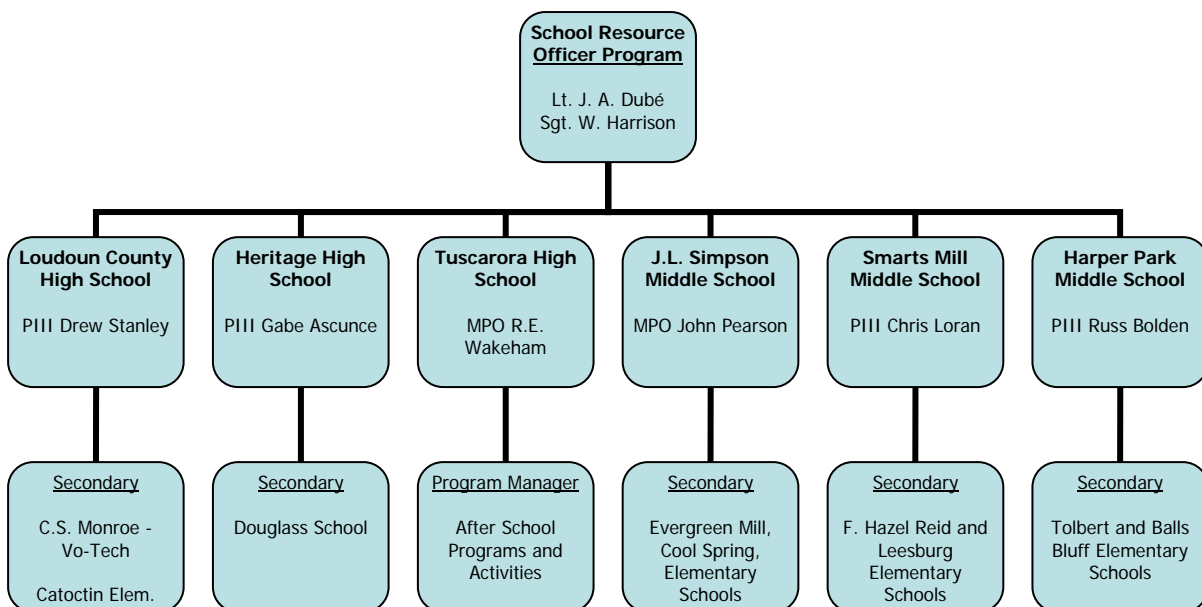
School Resource Officer Program

Since 1998, the Leesburg Police Department has had a police presence in the Middle and High Schools located within the Town of Leesburg. In 2011, officers were assigned to Smarts Mill Middle School, J.L. Simpson Middle School, Harper Park Middle School, Heritage High School, Loudoun County High School, and Tuscarora High School. In addition to their regularly assigned schools, each School Resource Officer (SRO) is assigned secondary responsibilities at elementary schools and specialty schools within the Town of Leesburg.

The presence of a School Resource Officer, armed and in uniform, ensures a timely response to any criminal behavior, or better yet, deters the criminal behavior from taking place. Students and faculty are better protected from violence and can pursue their educational activities in a secure and orderly environment. When requested, the School Resource Officer will instruct classes in such topics as crime prevention, substance abuse and driver safety. They also provide information on legal issues, and promote positive relationships and a better understanding between youth and police officers.

Many in the law enforcement community have realized the advantages of a close and positive working relationship with their local schools. Interaction among police officers, students, faculty and administrators helps to produce an understanding of the police officer's role and the criminal justice system. The Leesburg Police Department's School Resource Officer program seeks to maximize these advantages by placing officers in requested schools during all normal hours of school operation.

During the summer months when school is not in session, the SROs conduct several summer camps at the Police Department targeting elementary and middle school aged children. Topics of instruction during these camps include team building, leadership, conflict resolution, character education, physical fitness, juvenile law, and police procedures such as fingerprinting and evidence collection.



Operational Support Section

Traffic Management Unit

The Traffic Management Unit is made up of a Sergeant and (4) four officers, including (2) motorcycle officers who perform a wide variety of tasks ranging from responding to traffic related complaints from citizens and local government officials, selective enforcement, parking complaints, traffic control, traffic checking details, and crash investigation and reconstruction. A large percentage of their time is committed to conducting traffic safety programs to make our roads safer.

In addition to their regularly assigned duties, members of the Traffic Management Unit are also responsible for the following:

- ... Special Events (Parades, marches, downtown events, funeral escorts);
- ... Community Speed Watch Program;
- ... Variable Message Boards and Speed Trailer deployments;
- ... Radar and Lidar (Laser) instruction at department and police academy level;
- ... Police vehicle calibrations;
- ... Child Safety Seat installations and inspections.

Members of the unit also serve on the Town of Leesburg's Standing Residential Traffic Committee and the County of Loudoun's Transportation Committee. In the 2011 calendar year, the five members of the Traffic Management Unit investigated **386** traffic crashes, issued **3584** traffic related summonses, and performed **231** child safety seat inspections.



Leesburg Police Department Annual Report – 2011

Traffic activity at a glance.....2009 through 2011

... Reportable crashes increased in 2011. There were 450 in 2011 compared to 352 in 2010. The number of injury crashes slightly increased from 117 in 2010 to 124 in 2011; and alcohol related crashes also increased. Hit and Run crashes decreased slightly with 229 in 2011.

... There were 588 non-reportable crashes* during 2011, an increase of 128 from 2010.

**A non-reportable crash as defined by Virginia DMV is a crash with less than \$1,500 of combined property damage and no report of personal injury. Crashes that occur on private property are also classified as non-reportable.*

Type of Crash	2009	2010	2011
Fatal Crashes	1	2	0
Injury Crashes	109	117	124
Total Reportable Crashes	427	352	450
Non-Reportable	501	460	588
Total All Crashes	928	812	1038
Alcohol Related Crashes	22	15	25
Hit And Run	254	234	229

Traffic Citation Reports

Citations	2009	2010	2011	3 yr. Avg.
Traffic	5751	7328	6795	6625
Traffic Written Warnings	2138	3849	3210	3066
DUI Arrests	174	164	99	146
Parking *	1171	1433	1787	1464

* Primary Meter Enforcement is conducted by the Finance Department. These numbers represent parking tickets issued by police officers only.

Traffic Management

Activity	2009	2010	2011
Specialized Traffic Details	613	763	454
Citations during Specialized Traffic Details	1604	3545	3567
Funeral Details and Escorts	83	90	92

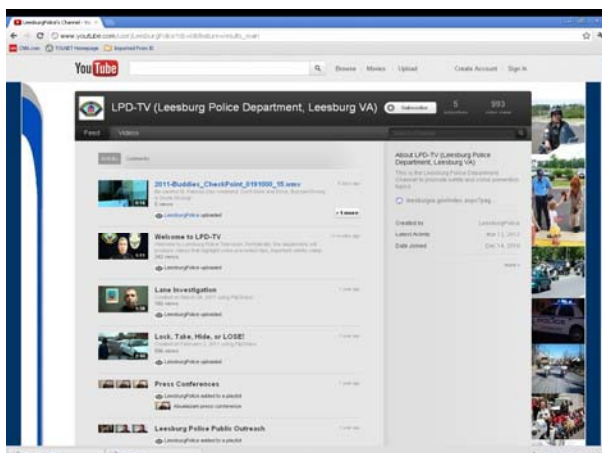
Intersection Areas with the Highest Number of Crashes

(*Locations may include crashes that occurred in the general area such as turn lanes, etc.)

2010		2011	
Number	Area	Number	Area
51	Sycolin Road @ Bypass	70	Sycolin Road @ Bypass
31	Edwards Ferry Road @ Bypass	61	E. Market St. @ Battlefield Pkwy
28	E. Market St. @ Battlefield Pkwy	54	Edwards Ferry Road @ Bypass
22	E. Market St. @ Cardinal Park Dr.	20	South King Street @ Catoctin Circle
14	E. Market St. @ Ft. Evans Road	16	E. Market St. @ Cardinal Park Dr.

Leesburg Police Department Annual Report – 2011

Social Media Connections:



YouTube

The Leesburg Police Department's newest outreach initiative is our very own YouTube page. Citizens wishing to learn about crime prevention tips, press conferences, crime updates, and other information will be able to access that in the form of short video segments. Our YouTube page is located at:

www.youtube.com/leesburgpolice

Facebook

Citizens can follow the Leesburg Police Department through our Facebook page. Free to join, users can obtain updates on activities that we are involved in such as special events, crime bulletins, and traffic alerts. Our Facebook page is located at:

www.facebook.com/LeesburgVAPolice



Twitter

If you are interested in getting short, timely messages from the Leesburg Police Department, then Twitter is the place to do it. Free to join, users can obtain updates on activities that we are involved in such as special events, crime bulletins, and traffic alerts. Our Twitter page is located at:

<http://twitter.com/LeesburgPolice>

Leesburg Police Explorer Post #1041



The Leesburg Police Department Explorer Post #1041 was started in 2007. The Post now has eleven active members and two “reservists” who are attending college out of the area. The Post continues to assist the Police Department at many public events including the July 4th Celebration, parades, and National Night Out. Explorers have assisted with several hiring events and with some administrative tasks at headquarters. The Post continues to work with the “McGruff” program supplying the manpower to get McGruff to special events and assist the Crime Prevention Unit. In 2011 they helped with the Department sponsored “Holidays with the Cops” event. The post also deploys the Department golf cart and a float at all the Town of Leesburg parades. The float is used to promote anti-crime and/or traffic safety topics. The post as a whole worked over 515.5 man hours working in the roles described above and in community service.

In 2011, Explorer Post #1041 assisted the National Capitol Area Council with the council’s NCAC 100 celebration event. The post was tasked with handling security for the event held at Camp Snyder. The event was attended by over 1000 scouts and family members. The Explorers worked foot beats, manned security headquarters assisting participants and assisted with the initial parking plan (pre plan and implementation).

Explorer posts help youth to gain insight into a variety of programs that offer hands-on career activities. Law Enforcement Exploring shows youth the ins and outs of the law enforcement profession. For young men and women who are interested in careers in the field of law enforcement, Exploring offers experiential learning with lots of fun filled, hands-on activities that promote the growth and development of adolescent youth.



Leesburg Police Citizens Support Team



In 2011, the Police Department and the Community continued to benefit from the dedication and support provided by the Leesburg Police Citizens Support Team. These dedicated citizen volunteers provide tremendous support in areas such as community patrol, special events, traffic control, searching for missing persons, and community safety events.

In 2011, the Citizens Support Team provided over 6300 staff hours of volunteer service, saving the Town over \$35,000 in staff costs. In addition to helping with the various Town of Leesburg special events, members of the Support Team routinely perform community patrol and participate in community events with the Crime Prevention Unit, assist the Traffic Management Unit with data collection, offer child identification/DNA kits to the public, pilot the Department's barrel train during parades and other child safety events, and when requested, perform traffic control at major fire or traffic accident scenes or after damaging storms.

